

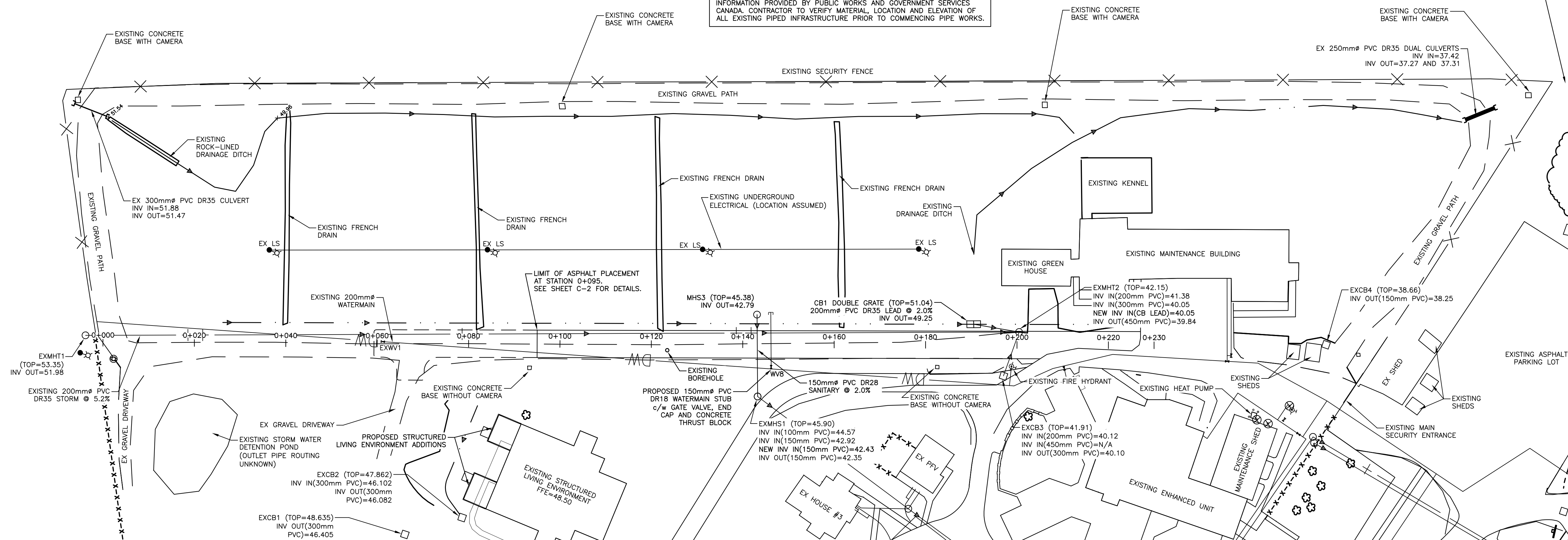
SCALE = 1:500




NOTE:
SURVEY DATA WAS FIXED TO NSCM (HPN) 9602, NORTHING = 5,021,116.495; EASTING = 476,239.649 (UTM ZONE 20 NAD 83(ORIGINAL)), HAVING A GEODECTIC ELEVATION OF 70.695. CONTRACTOR TO CONTACT GENIVAR FOR LAYOUT INFORMATION PRIOR TO CONSTRUCTION

NOTE:
EXISTING SITE INFRASTRUCTURE IS TAKEN FROM A COMBINATION OF
AS-BUILT TOPOGRAPHICAL SURVEY INFORMATION AND DESIGN AND RECORD
INFORMATION PROVIDED BY PUBLIC WORKS AND GOVERNMENT SERVICES
CANADA. CONTRACTOR TO VERIFY MATERIAL, LOCATION AND ELEVATION OF
ALL EXISTING PIPED INFRASTRUCTURE PRIOR TO COMMENCING PIPE WORKS

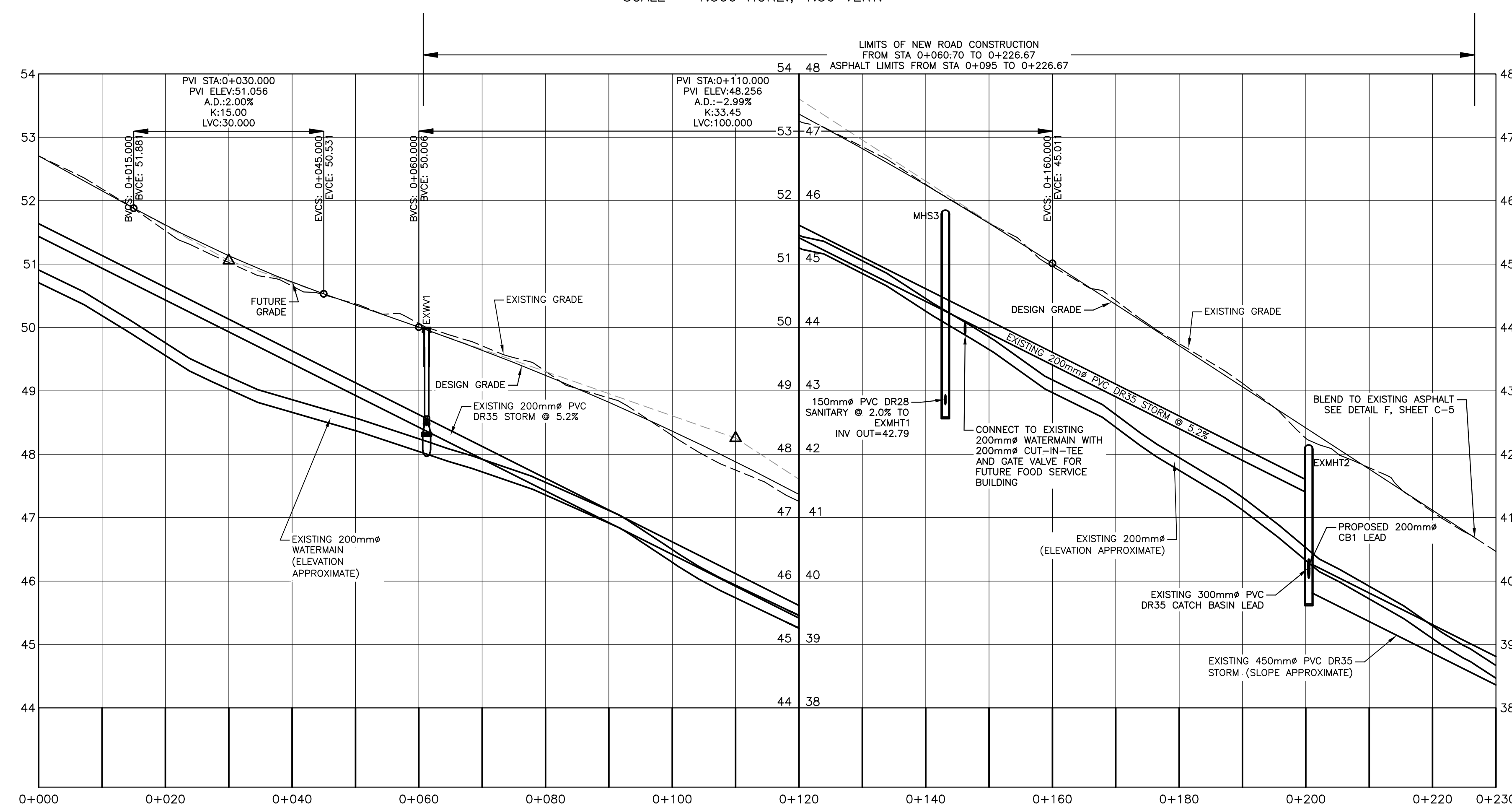
NOTE:
CONTRACTOR TO INSTALL NEW CATCH BASIN WITH PYRAMID GRATE IN THE LOWEST POINT OF THE TREED AREA BEHIND THE SIDEWALK ON JAMES STREET. CATCH BASIN TOP ELEVATION TO BE 100mm BELOW ELEVATION OF TOP OF EXISTING SIDEWALK. INSTALL 200mm² PVC DIPS, CATCH BASIN LEAD AND CONNECT TO 300mm² CONCRETE STORM MAIN WITH A 1050mm² MANHOLE. MANHOLE TO BE LOCATED IN THE JAMES STREET CURB LINE. CONTRACTOR TO VERIFY FIELD LOCATION FOR NEW CATCH BASIN WITH DEPARTMENTAL REPRESENTATIVE PRIOR TO PLACEMENT.



SCALE: 1:500



SCALE = 1:500 HORZ.; 1:50 VERT.



PWGSC B1 (2004)

3	REVISED FOR ADDENDUM	MAY 2012
2	REVISED FOR ADDENDUM	MAY 2012
1	ISSUED FOR TENDER	MAR 2012
revisions		date

project

4 BED
SLE EXPANSION

NOVA INSTITUTION FOR WOMEN

TRURO, NS

drawing	dessin
---------	--------

SERVICING PLAN & PROFILE

designed A. McCARTHY

date MAY 18, 2012

drawn A. McCARTHY dessin

date MAY 18, 2012

approved A. McCARTHY approved

date MAY 18, 2012

Tender	Soumission
--------	------------

PWGSC Project Manager Administrateur de projets TPSG

project number no. du projet
5-017000-001

R.043928.004

drawing no.	no. du dessin
-------------	---------------

C-1

E-DRM/GDD-E: 288622 Version 1