

RETURN BIDS TO:
RETOURNER LES SOUMISSIONS À:
Bid Receiving Public Works and Government
Services Canada/Réception des soumissions Travaux
publics et Services gouvernementaux Canada
#910, 410-22nd Street East
Saskatoon
Saskatchewan
S7K 5T6

SOLICITATION AMENDMENT MODIFICATION DE L'INVITATION

The referenced document is hereby revised; unless otherwise indicated, all other terms and conditions of the Solicitation remain the same.

Ce document est par la présente révisé; sauf indication contraire, les modalités de l'invitation demeurent les mêmes.

Comments - Commentaires

Vendor/Firm Name and Address
**Raison sociale et adresse du
fournisseur/de l'entrepreneur**

Issuing Office - Bureau de distribution
Public Works and Government Services
Canada/Réception des soumissions Travaux publics et
Services gouvernementaux Canada
#910, 410 - 22nd Street East
Saskatoon
Saskatche
S7K 5T6

Title - Sujet RCMP 'F' Div HQ Office Renovation	
Solicitation No. - N° de l'invitation EV385-130875/A	Amendment No. - N° modif. 001
Client Reference No. - N° de référence du client EV385-130875	Date 2012-07-17
GETS Reference No. - N° de référence de SEAG PW-\$PWW-199-4508	
File No. - N° de dossier PWW-2-35049 (199)	CCC No./N° CCC - FMS No./N° VME
Solicitation Closes - L'invitation prend fin at - à 02:00 PM on - le 2012-08-02	Time Zone Fuseau horaire Central Standard Time CST
F.O.B. - F.A.B. Plant-Usine: <input type="checkbox"/> Destination: <input checked="" type="checkbox"/> Other-Autre: <input type="checkbox"/>	
Address Enquiries to: - Adresser toutes questions à: Okemaysim, Tammy L.	Buyer Id - Id de l'acheteur pww199
Telephone No. - N° de téléphone (306) 975-6583 ()	FAX No. - N° de FAX (306) 975-5397
Destination - of Goods, Services, and Construction: Destination - des biens, services et construction: RCMP F Division Headquarters 6101 Dewdney Avenue Regina, Saskatchewan S4P 3K7	

Instructions: See Herein

Instructions: Voir aux présentes

Delivery Required - Livraison exigée	Delivery Offered - Livraison proposée
Vendor/Firm Name and Address Raison sociale et adresse du fournisseur/de l'entrepreneur	
Telephone No. - N° de téléphone Facsimile No. - N° de télécopieur	
Name and title of person authorized to sign on behalf of Vendor/Firm (type or print) Nom et titre de la personne autorisée à signer au nom du fournisseur/ de l'entrepreneur (taper ou écrire en caractères d'imprimerie)	
Signature	Date

Solicitation No. - N° de l'invitation

EV385-130875/A

Amd. No. - N° de la modif.

001

Buyer ID - Id de l'acheteur

pww199

Client Ref. No. - N° de réf. du client

EV385-130875

File No. - N° du dossier

PWW-2-35049

CCC No./N° CCC - FMS No/ N° VME

La demande de soumission EV385-130875/A est modifiée pour comprendre ce qui suit :

1. ADDENDUM N° 1

Se reporter à l'Addendum n° 1 – Rénovations des bureaux du quartier général de la division F de la GRC, Regina (Saskatchewan)

This Addendum contains 3 Pages and 6 Attachments.

The following information supplements and/or supersedes the bid documents dated: June 22, 2012

This Addendum forms part of the contract documents and is to be read, interpreted, and coordinated with all other parts. The cost of all contained in the original drawings and specifications issued for the above-named project to the extent referenced and shall become part thereof. Acknowledge receipt of this Addendum by inserting its number and date on the Tender Form. Failure to do so may subject bidder to disqualification.

ARCHITECTURAL	
	SPECIFICATIONS
1.1	<u>Reference Section 00 01 00 Table of Contents, Division 11 Specialties</u> Add: Section 11 90 01 - Paint Booth dated July 6, 2012.
1.2	<u>Reference Section 01 14 00 Work Restrictions, Division 1 General Requirements</u> Delete: Paragraph 1.2.4 Add: Paragraph 1.2.4: Contractor is permitted to use washroom facilities in basement located near south elevators.
	DRAWINGS
1.3	<u>Drawing A0.2 – Door Schedule</u> Door 120.32: Delete: S1 Hardware Add: S2 Hardware: <ul style="list-style-type: none"> ■ Door controls (closers): to CAN/CGSB-69.20, Grade 1, heavy duty, adjustable hydraulic back check, separate regulation of closing speed and latching speed, rack and pinion hydraulic action. Size in accordance with CAN/CGSB-69.20; table A1, finished to 626. ■ Acceptable products: LCN, Sargent, Norton, Rixson or approved equivalent. <p>Note: Ensure S2 Hardware is installed on Corridor side of Door 120.32</p> <u>Drawing A0.2 – Room Finish Schedule</u> 120.32 Office – Revise to read 120.30 Office <u>Drawing A0.2 Colour Schedule</u> Delete: MEL, PLAM1 and PLAM2 and all references to Room 119.03 <u>Drawing A0.2 Furniture Legend 117.02</u> Delete: Notes 2 and 3 Add: Note 2: All furniture to be moved to bonded offsite storage, held until it can be moved to new location and reinstalled by the Contractor. Add: Note 3: All computer equipment, monitors and electronic screens to be removed, stored and reinstalled by Departmental Representative. <u>Drawing A0.2 Furniture Legend 120.07</u> Delete Notes 1 and 2. Add Note 1: All furniture to be moved and stored by Departmental Representative. Add Note 2: Departmental Representative to reinstall furniture

1.4	<u>Drawing A1.1 – Room 006.01 Demolition Plans and Details</u> Detail 2 – Basement Demolition Plan: Delete Note: “Cut 500x300 opening in existing concrete foundation”. Add Note: Cut 600mm diameter opening in existing concrete foundation.
1.5	<u>Drawing A1.2 – Construction Plans and Details</u> Delete A1.2 in its entirety. Replace with Drawing A1.2R dated July 6, 2012
1.6	<u>Drawing A2.1 Room 113.02 Plans and Details</u> Detail 2 – Reflected Ceiling Plan: Contractor shall apply a spray-on fireproofing to the existing steel deck ceiling to provide the required 3 Hour fire rating of the ceiling assembly.
1.7	<u>Drawing A3.1 – Room 120.07 Plans and Details</u> Detail 7/A3.1 Elevations Delete Note: “stainless steel sliding shutter (Refer to Specification 08 71 00 for Details)”
1.8	<u>Drawing A4.1 Room 117.02 Plans</u> Detail 3 - Clarification: Opening between 117.01 and 117.02 to read “Min 1100 clear” Detail 4/A4.1-A4.1- Room 117.02 New Reflected Ceiling Plan: Contractor to move north sprinkler head one ceiling tile west to accommodate return air grille. Clarification: Wall Type P6a should read P6 and Wall Type P6b should read P6.
1.9	<u>Drawing A4.2 Room 117.02 Details and Elevations</u> Detail 5/A5.1-A4.2 should read as Detail 5/A5.2-A4.2 Detail 7 – New Elevations: Elev “A”: Clarification – Wall Type P6b to read P6a Detail 8 – New Elevation: Elev “D” 1800x600 Tack Strip: Revise to 1800x1200 Tack Strip. 1800x1200 Tack Strip to be: Fire rated tack board shall be vinyl fabric laminated under pressure to 12.7mm thick fibreboard. The complete laminated panel composed of the vinyl fabric surface, adhesive and fibreboard backing shall have a vinyl surface flame spread index of Class II (26-75) when tested in accordance with ASTM Standard E84. <ol style="list-style-type: none"> 1. Face Sheet: vinyl fabric. Note: Face Sheet to have no seams. Weight: 464 grams per linear metre Flame Spread Factor: 5 2. Fibreboard: 12.7mm thick cellulose fibre insulating board having a Class III flame spread index. 3. Colours: Colour to be selected by architect from standard range. 4. Perimeter Trim: Extruded aluminum trim (19mm)
1.10	<u>Drawing A5.2 Room 209 Plans and Details</u> Detail 2/A5.2-A5.2 Ceiling Plan – Section 9/A5.2-A5.3 should read 6/A5.2-A5.3 Delete partition notes shown on Floor Plan Delete two notes referring to walls to u/s ceiling in Room 209.01. Delete flooring transition strips at Door 209.03 and Door 209.01A
1.11	<u>Drawing A5.3 Room 209 Elevations</u> Detail 1 – Elevation “C”: Delete reference to metal lockers.
1.12	<u>Drawing A5.4 Room 209 Spray Foam Details</u> Delete Drawing A5.4 in its entirety. Replace with A5.4R dated July 6, 2012
MECHANICAL	
SPECIFICATIONS	
1.13	<u>Reference Section 10 44 20 Portable Fire Extinguishers</u> Delete Paragraph 3.1.2
DRAWINGS	
1.14	<u>Drawing M1</u> Refer to Detail 2 – Contractor shall relocate existing underground sprinkler piping which runs parallel with exterior building wall at new exterior exhaust gooseneck.

1.15	<u>Drawing M3</u> Refer to Detail 6 - Partial Second Floor Plumbing and Heating Plan – Contractor to delete rough ins for SK1 in 209.01. These are not required.
1.16	<u>Drawing M4</u> Refer to Detail 2 – Partial First Floor Fire Protection Plan – Contractor to move north sprinkler head in Room 117.02 one ceiling tile west to accommodate return air grille.
ELECTRICAL	
DRAWINGS	
1.17	<u>Drawing E1.1 Basement Paint Booth Plans</u> Refer to Basement Plan Note Legend Add the following note; ‘O’ Existing light fixtures to remain. Re-suspend and adjust location of light fixtures as required to accommodate new and revised mechanical ductwork. Existing circuitry and switching to remain.

1.1 RELATED SECTIONS

- .1 Division 1 – General Requirements.
- .2 Division 23 – Heating, Ventilating and Air-Conditioning (HVAC).
- .3 Division 26 – Electrical.

1.2 REFERENCES

- .1 Health Canada/Workplace Hazardous Materials Information System (WHMIS)
 - .1 Material Safety Data Sheets (MSDS).

1.3 SUBMITTALS

- .1 Provide submittals in accordance with Section 01 33 00 - Submittal Procedures.
- .2 Product Data:
 - .1 Submit manufacturer's printed product literature and datasheet and include product characteristics, performance criteria, physical size, finish and limitations.
- .3 Quality control submittals: submit following in accordance with Section 01 45 00 - Quality Control.
 - .1 Manufacturer's Instructions: submit manufacturer's installation instructions and special handling criteria, installation sequence, cleaning procedures.
- .4 Closeout Submittals:
 - .1 Provide operation and maintenance data for paint booth for incorporation into manual specified in Section 01 78 00 - Closeout Submittals.

1.4 QUALITY ASSURANCE

- .1 Equipment manufacturer shall design to meet all O.S.H.A. standards, as well as those of N.F.P.A. – 33, International, Uniform, Standard and national Building Codes, and the Uniform and International Fire Codes.
- .2 Paint booth walls as per N.F.P.A. Chapter 5, paragraph 5-1.4.
- .3 Lights to be class I, Division II, Group A, B, C, D as per N.F.P.A.-33, Chapter 6, figure 6.5.2. Inside access lights are provided with proximity switches to prevent spraying while servicing light. Lights are E.T.L. Listed.
- .4 Filtration System reduces the concentration of particulate matter in the exhaust to a level that is considered safe for personnel.
- .5 A manometer (or visible draft gauge) is standard on all booths.
- .6 The fan motors and belts are located outside the exhaust duct space and the fan blades are nonferrous. Motors are U.L. listed.

1.5 DELIVERY, STORAGE AND HANDLING

- .1 Packing, shipping, handling and unloading:
 - .1 Deliver, store and handle materials in accordance with manufacturer's written instructions.

Part 2 Products

2.1 EQUIPMENT

- .1 Special, floor style, non-pressurized, industrial dry filter cross flow paint spray booth.
- .2 Booth Working Dimensions: 1981 wide x 2134 high x 610 mm deep.
- .3 Approximate Overall Dimensions: 2083 wide x 2185 high x 1220 mm deep.
- .4 Construction:
 - .1 18 gauge galvanized steel sheets. Panels are pre-punched and companion flanged for easy assembly. Booth is rigidly reinforced with structural steel construction.
- .5 Air is introduced into the front of the booth through the open face of the enclosure and is exhausted through a plenum at the rear of the booth. Air is pulled horizontally from the front of the booth through the working depth at an average velocity of approximately 100-125 fpm. The exhaust filter layout is designed for even air velocity throughout the working area of the booth (consistent air velocity is an important factor in achieving a quality paint job). The booth is designed with the maximized filter quantity to assure efficient particulate filtration from the exhaust filters. Provide a flanged duct connection.

2.2 ACCESSORIES

- .1 610 mm tube axial in-line exhaust fan (4,550 CFM @ 1.5" s.p. Tube axial fan features a continuously welded housing for an airtight seal. The propellers are non-sparking cast aluminum for consistent air velocity at higher static pressures. The universal motor plates will allow adjustable belt tensioning. The bearings are of premium air handling quality, self-aligning, and have an L₁₀ life of 40,000 hours. The belt guard provides protection from the rotating pulley (OSHA requirement). Fan design has been AMCA tested per 210 Standards. Lubrication lines to be extended to exterior of fan with copper tubing, complete with grease nipple.
- .2 Motor – 3 h.p. 347 V, 3 phase, 60 HZ TEFC high efficiency motor with variable pitch drive sheave. Motor features a heavy gauge steel frame, double sealed ball bearings that are mechanically locked on the shaft end and bolt on motor base for easy removal. The service factors from the motor are 1.15 for 3-phase power and 1.0 on 1-phase power. UL recognized and CSA certified. Motor shall be non-overloading.
- .3 Fluorescent lights fixtures, inside access 1220 mm - 4 tube, 265 mA, 32 watt T8 ballast, dual voltage – 120/347 with 85% colour corrected tubes included. Lights are Class I, Division 2 rated. Lights are ETL & ETL-C listed and are also listed for locations having deposits or readily combustible paint residue. Instant start (starting temperature at 0 degrees F.) T-8 electronic ballast provides greater energy savings. The lamp holders are twist in style. The lights feature front/inside access for easy lamp replacement and are

equipped with an interlock switch to disable painting operations when light access door is opened.

- .4 Industrial style exhaust filter chamber.
- .5 13 mm 3-way solenoid valve to prevent spraying in booth when fans are off or light tube access door is opened (NFPA-33 requirement).
- .6 Air proving switch.
- .7 Manometer (Required per NFPA-33 Fire Code to monitor paint over spray build up on exhaust filters).
- .8 508 x 508 x 25 mm exhaust filters and one set of grids. Filter media shall be approved for the national Emission Standard, based on 40 CFR Part 63 Subpart HHHHHH consistent with ASHRAE 52.1
- .9 All necessary assembly hardware including anchor bolts and exploded view installation drawings for easy assembly.
- .10 Pre-wired electrical control panel featuring single point connection for quick and easy wiring with NEMA-1 rated enclosure. Includes:
 - .1 Non-fused disconnect.
 - .2 Magnetic motor starter.
 - .3 Motor fuse protection.
 - .4 Terminal strips for field wiring
 - .5 Lighting fuse protection.
 - .6 System operating lights.
 - .7 UL industrial listing
 - .8 Terminal strip for EMCS Contractor to allow:
 - .1 Enable/disable
 - .2 Monitor alarms

Part 3 Execution

3.1 MANUFACTURER'S INSTRUCTIONS

- .1 Compliance: comply with manufacturer's written recommendations, including product technical bulletins, handling, storage and installation instructions, and datasheets.

3.2 INSTALLATION

- .1 Install at location shown on drawings and in accordance with manufacturer's written instructions. Co-ordinate with mechanical and electrical work.
- .2 Prepare existing floor, walls and ceiling areas for the installation of the new paint booth including prior cleaning of all surfaces prior to booth installation.
- .3 Provide low voltage timer switch to start/stop unit through EMCS. Coordinate with EMCS Contractor.

3.3 FIELD QUALITY CONTROL

- .1 Manufacturer's Field Services:
 - .1 Provide manufacturer's field services consisting of product use recommendations and periodic site visits for inspection of product installation in accordance with manufacturer's instructions.

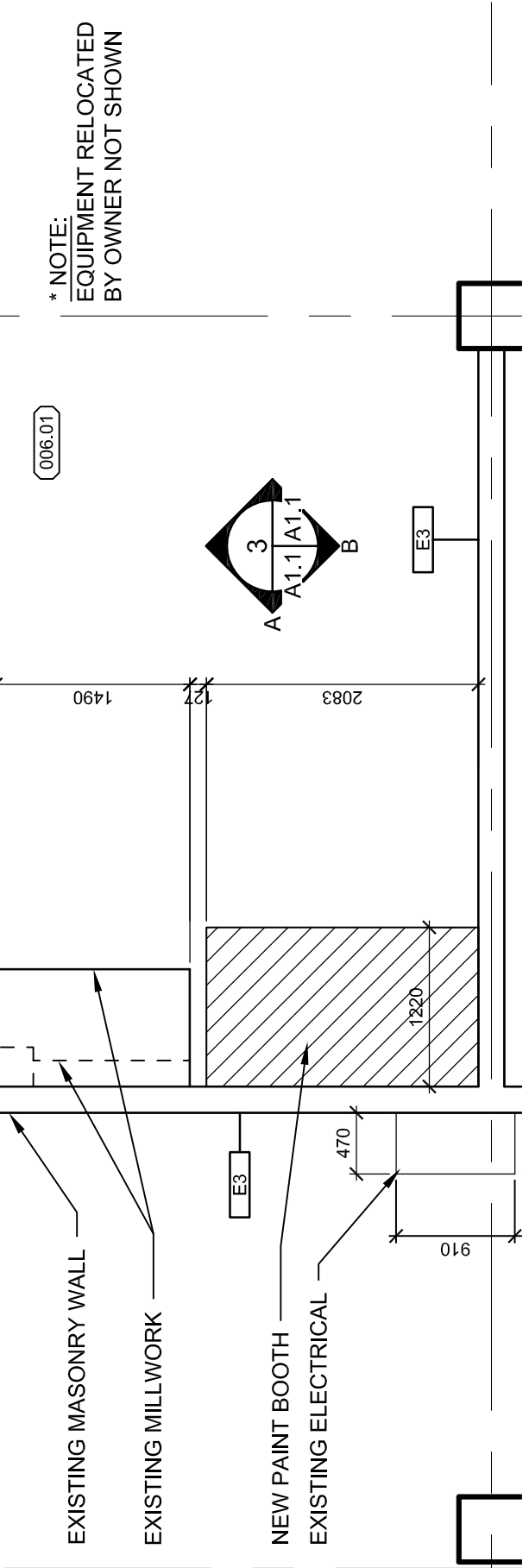
3.4 CLEANING

- .1 Clean in accordance with Section 01 74 11 - Cleaning.
- .2 Clean metal panels, light fixtures, and other surfaces after installation using manufacturer's recommended cleaning procedures.

END OF SECTION

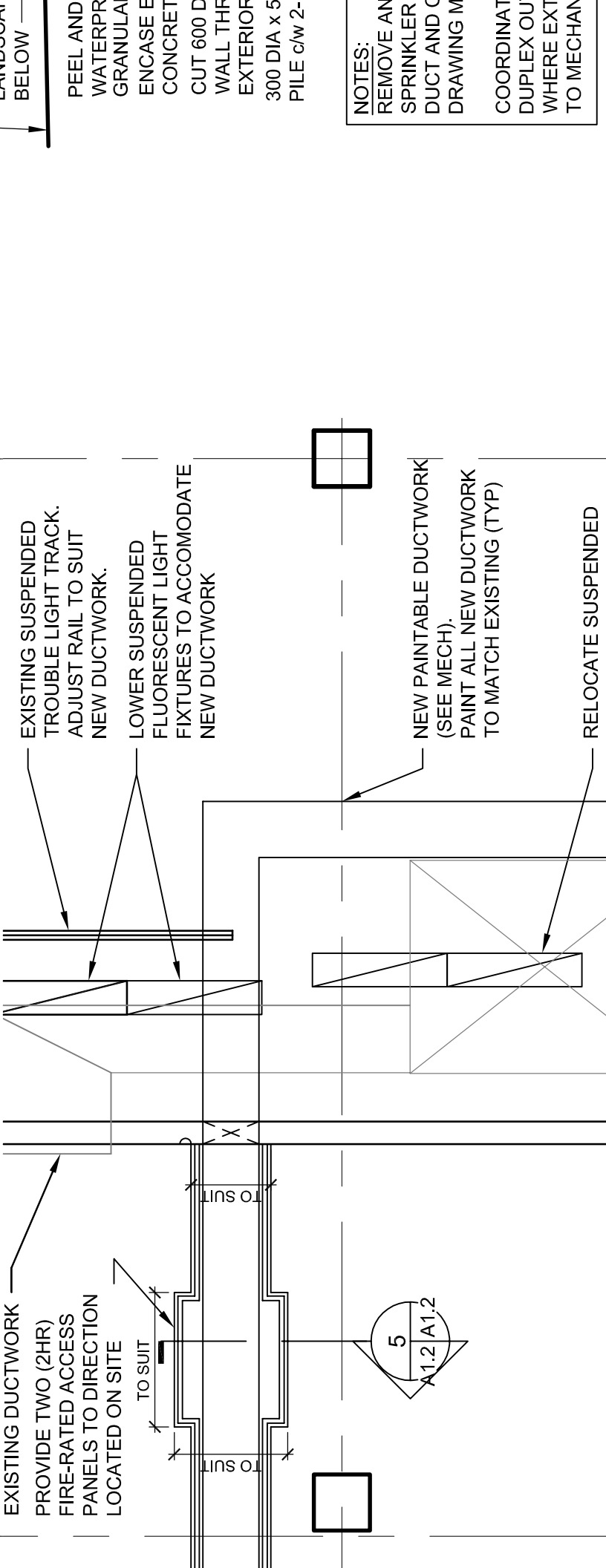
006.01

* NOTE:
EQUIPMENT RELOCATED
BY OWNER NOT SHOWN



7

8



3B
A1.2 A1.2

PAINT PVC
MATCH BU
PATCH AN
EXISTING

REMOVE A
EXISTING
PERIMETE

LANDSCAP
BELOW

PEEL AND
WATERPR
GRANULA
ENCASE E
CONCRET
CUT 600 D
WALL THR
EXTERIOR
300 DIA x 5
PILE c/w 2-

NOTES:
REMOVE AN
SPRINKLER
DUCT AND C
DRAWING M
COORDINAT
DUPLEX OU
WHERE EXT
TO MECHAN

18 000
J/S CONC FLOOR

J/S CONC FLOOR

CONCLUSION:

O.O.C.

6.1.0.88

17 200
U/S BRICK

U/S BRICK

17 000
U/S BRICK

U/S BRICK

T-WALL

16 400
U/S STL ANGLE

U/S STL ANGLE

18 00

U/S CONC FLOOR	U/S CONC FLOOR

**NEW SPRAY FOAM INSULATION
NEW 16mm GWB (TAPED ONLY)**

17 200

U/S BRICK

17 000

U/S BRICK

16 400

U/S STL ANGLE

CLEAN FIRE PROOFING ON
EDGE OF DECK CLOSURE
TRIM.FOAM IN INSULATION
TO CLOSE DECK VOIDS
ABOVE EXISTING CHANNEL

FOAM FLUTES OF METAL DECK

**PATCH CEMENTITIOUS
FIREPROOFING
WHERE REQUIRED**

NEW ACOUSTIC TILE CEILING

NEW 6 mil POLY OVER STUDDING
AND TAPE TO CLEANED H.S.S.
TAPE ALL LAPS, JOINTS, AND EDGES.
INSTALL 16mm GWB (PAINT), NEW
FOAM AROUND ALL DRYWALL
PENETRATIONS: _____

SPRAY FOAM TO FILL VOID BETWEEN BOTH HSS. TRIM TOP SURFACE OF FOAM SO LEVEL WITH BOTH H.S.S. TRIM AND REINSTALL BATT INSULATION TO SLOPED STUD CAVITY

ADHERE V.B TO WINDOW FRAME.