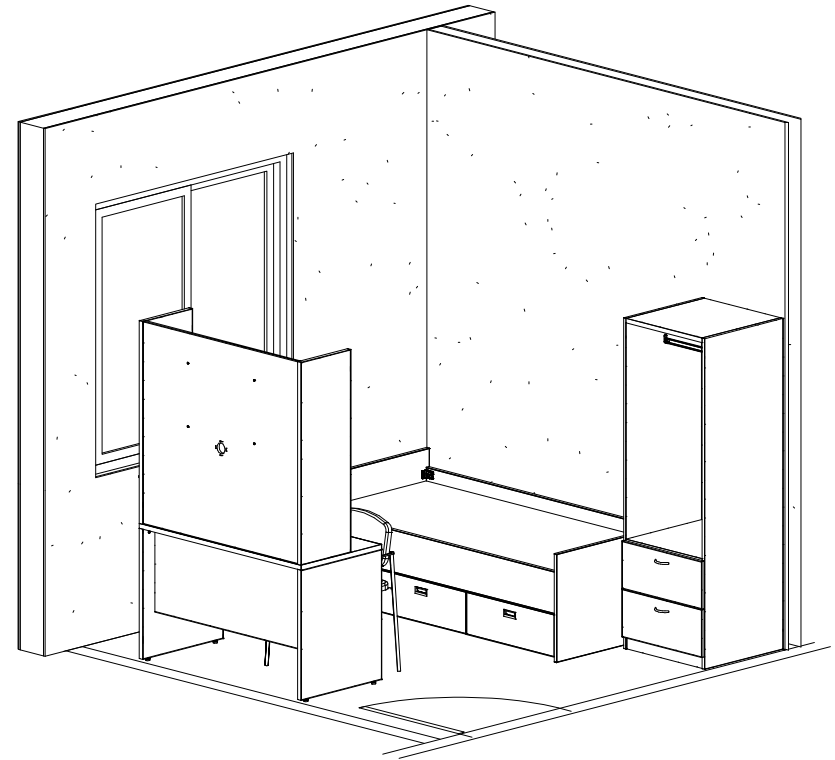
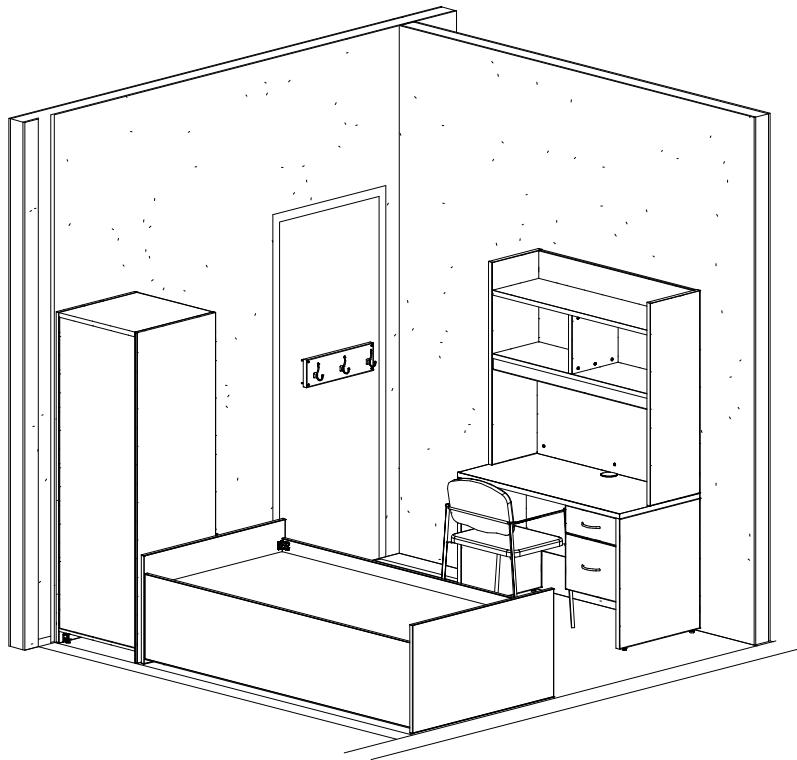


CSC Living Units

Rev#	Revision Description	Drawn By	Rev Date
DA	Production	JC	1-Aug-12



CUSTOMER DESIGN APPROVAL

Signature Approves Design Only & Does Not Constitute Agreement To Purchase.

QUANTITY

50

Finishes & Specifications:

Counter / Top Items	See Schedule	Counter / Top Edging	See Schedule
Horizontal Items	See Schedule	Horizontal Edging	See Schedule
Vertical Items	See Schedule	Vertical Edging	See Schedule

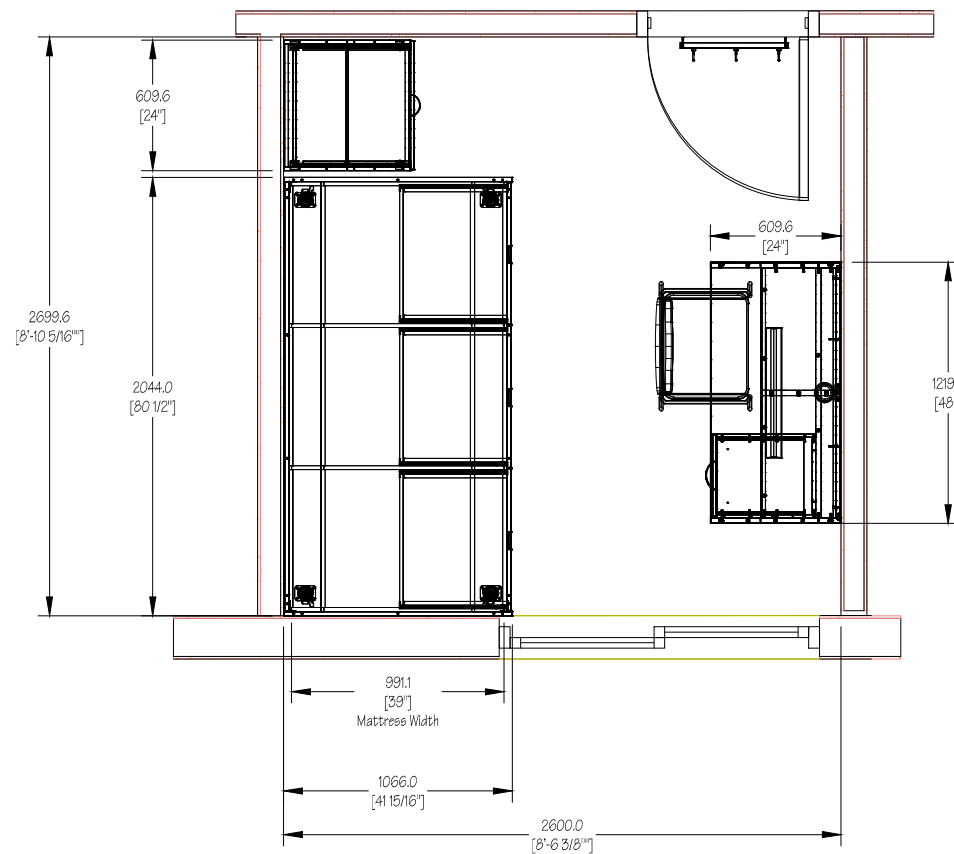
DWG #	11631-423 CSC 50 Beds Bedroom Typical.dwg				
SHEET #	1	OF	5	DATE	August 1, 2012
DRAWN BY	GXW	REVIEWED BY	MB	PROJECT #	----
				QUOTE #	11631

DRAWING
TITLE

50 Beds Units Bedroom Typical

These Drawings & Specifications Are The Property Of The Correctional Service Of Canada & Shall Not Be Reproduced, Copied, Or Used As The Basis For The Manufacture Or Sale Of Articles Without The Permission Of The Correctional Service Of Canada

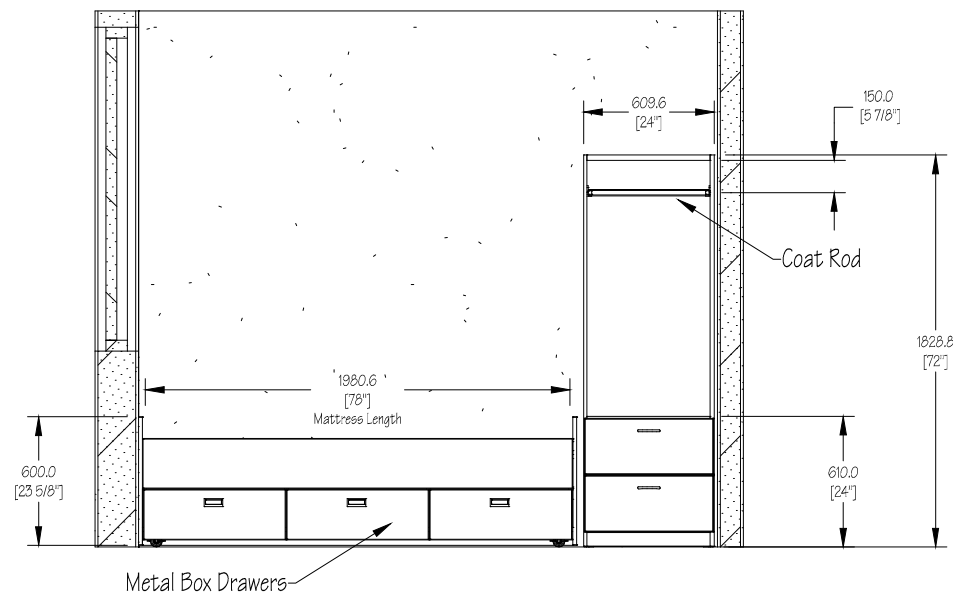
CSC Living Units



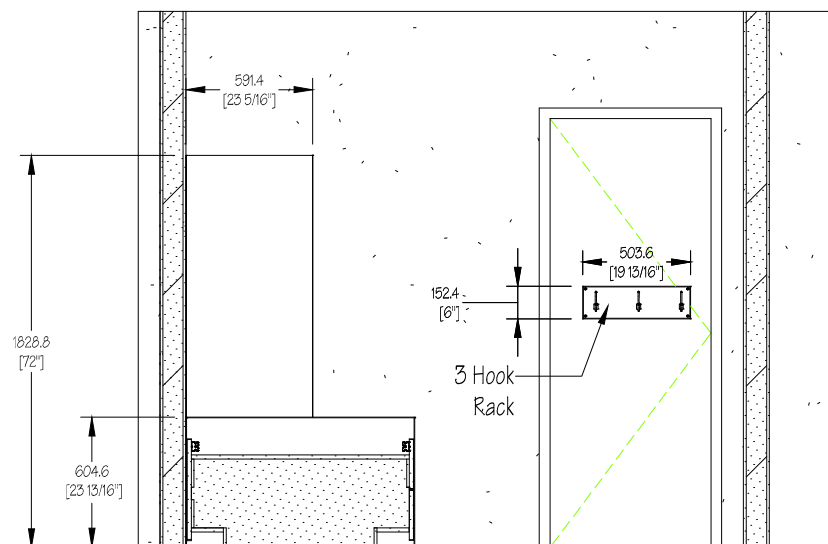
DWG #	11631-423 CSC 50 Beds Bedroom Typical.dwg							
SHEET #	2	OF	5	DATE	August 1, 2012		REVISION	DA
DRAWN BY	GXW	REVIEWED BY	MB	PROJECT #	----	QUOTE #	11631	

QUANTITY	50
----------	----

CSC Living Units



1 Elevation

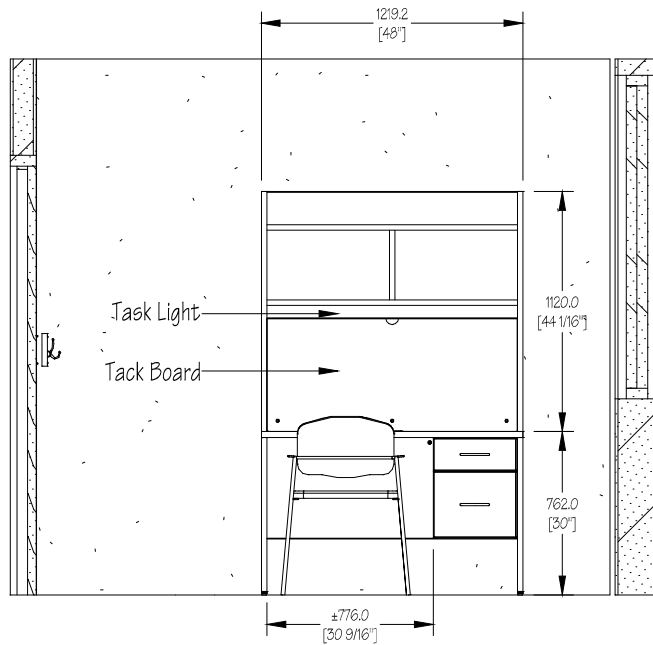


2 Elevation

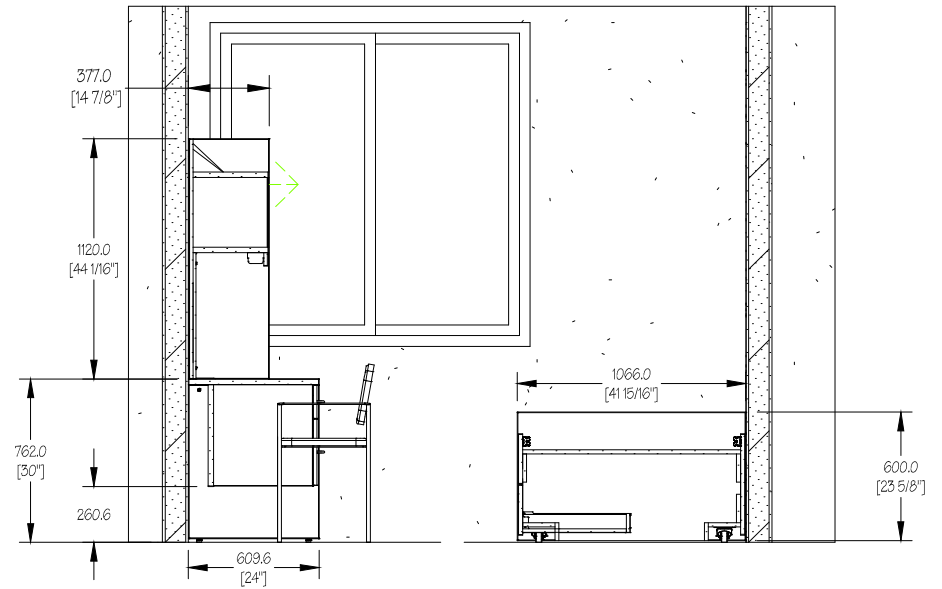
QUANTITY	50
----------	----

DWG #	11631-423 CSC 50 Beds Bedroom Typical.dwg						
SHEET #	4	OF	5	DATE	August 1, 2012	REVISION	DA
DRAWN BY	GXW	REVIEWED BY	MB	PROJECT #	----	QUOTE #	11631
DRAWING TITLE	50 Beds Units Bedroom Typical						

CSC Living Units



Elevation



Elevation

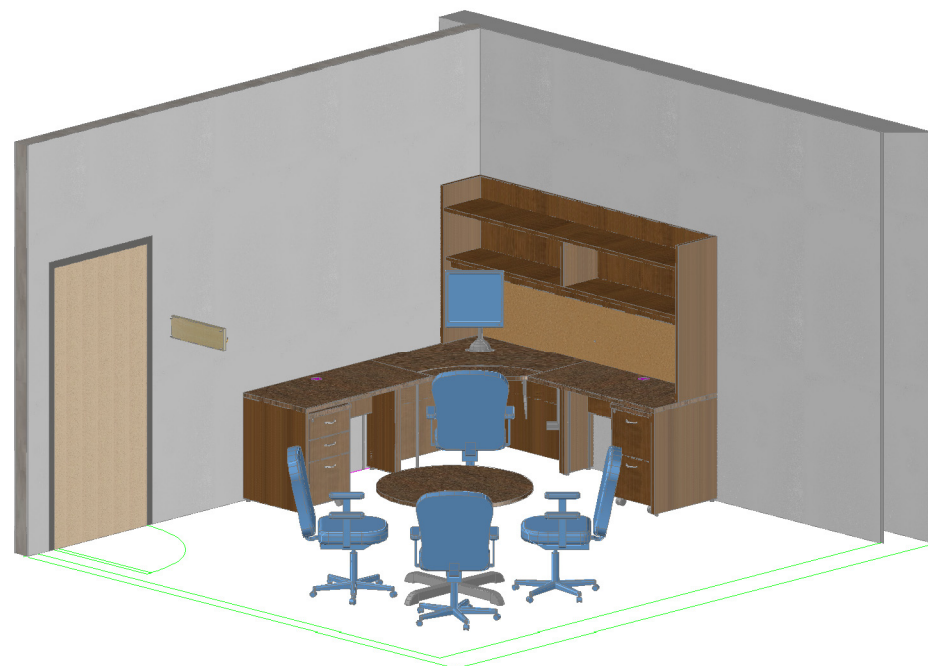
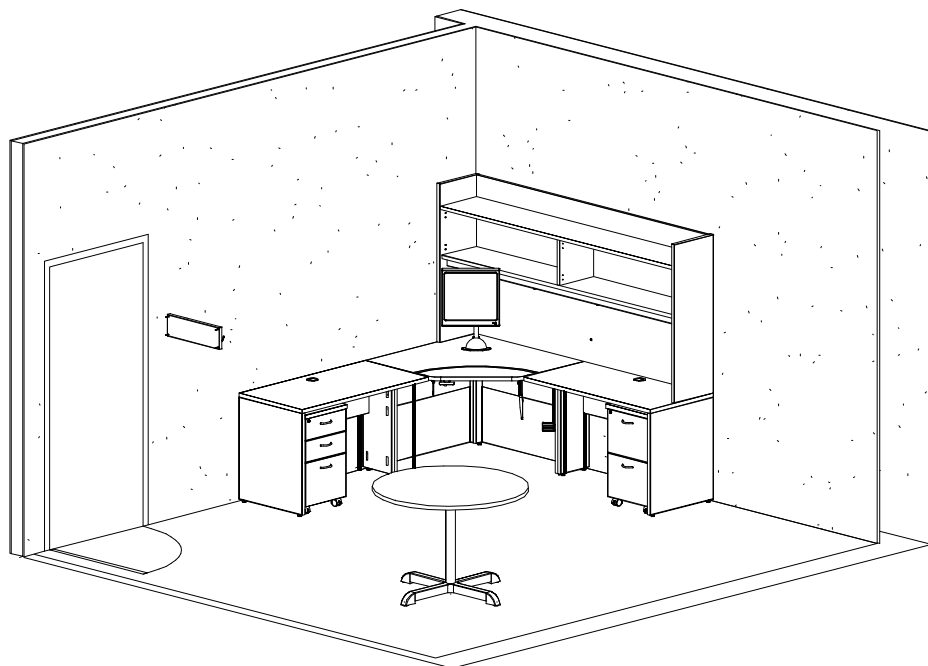
QUANTITY	50
----------	----

DWG #	11631-423 CSC 50 Beds Bedroom Typical.dwg							
SHEET #	5	OF	5	DATE	August 1, 2012		REVISION	DA
DRAWN BY	GXW	REVIEWED BY	MB	PROJECT #	----	QUOTE #	11631	

DRAWING TITLE	50 Beds Units Bedroom Typical
------------------	-------------------------------

CSC Living Units

Rev#	Revision Description	Drawn By	Rev Date
DA	Production	JC	1-Aug-12



CUSTOMER DESIGN APPROVAL

Signature Approves Design Only & Does Not Constitute Agreement To Purchase.

QUANTITY

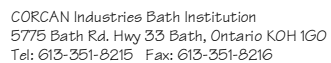
1

Finishes & Specifications:

Counter / Top Items	See Schedule	Counter / Top Edging	See Schedule
Horizontal Items	See Schedule	Horizontal Edging	See Schedule
Vertical Items	See Schedule	Vertical Edging	See Schedule

These Drawings & Specifications Are The Property Of The Correctional Service Of Canada & Shall Not Be Reproduced, Copied, Or Used As The Basis For The Manufacture Or Sale Of Articles Without The Permission Of The Correctional Service Of Canada

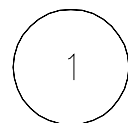
DWG #	11631-423 CSC 50 Beds Units Director's Office.dwg							
SHEET #	1	OF	5	DATE	August 1, 2012		REV #	DA
DRAWN BY	GXM	REVIEWED BY	EM	PROJECT #	----	QUOTE #	11631	
DRAWING TITLE	50-Beds Units Director's Office							



DWG #	11631-423 CSC 50 Beds Units Director's Office.dwg							
SHEET #	2	OF	5	DATE	August 1, 2012		REVISION	DA
DRAWN BY	GXW	REVIEWED BY	EM	PROJECT #	----	QUOTE #	11631	

50-Beds Units Director's Office

CSC Living Units

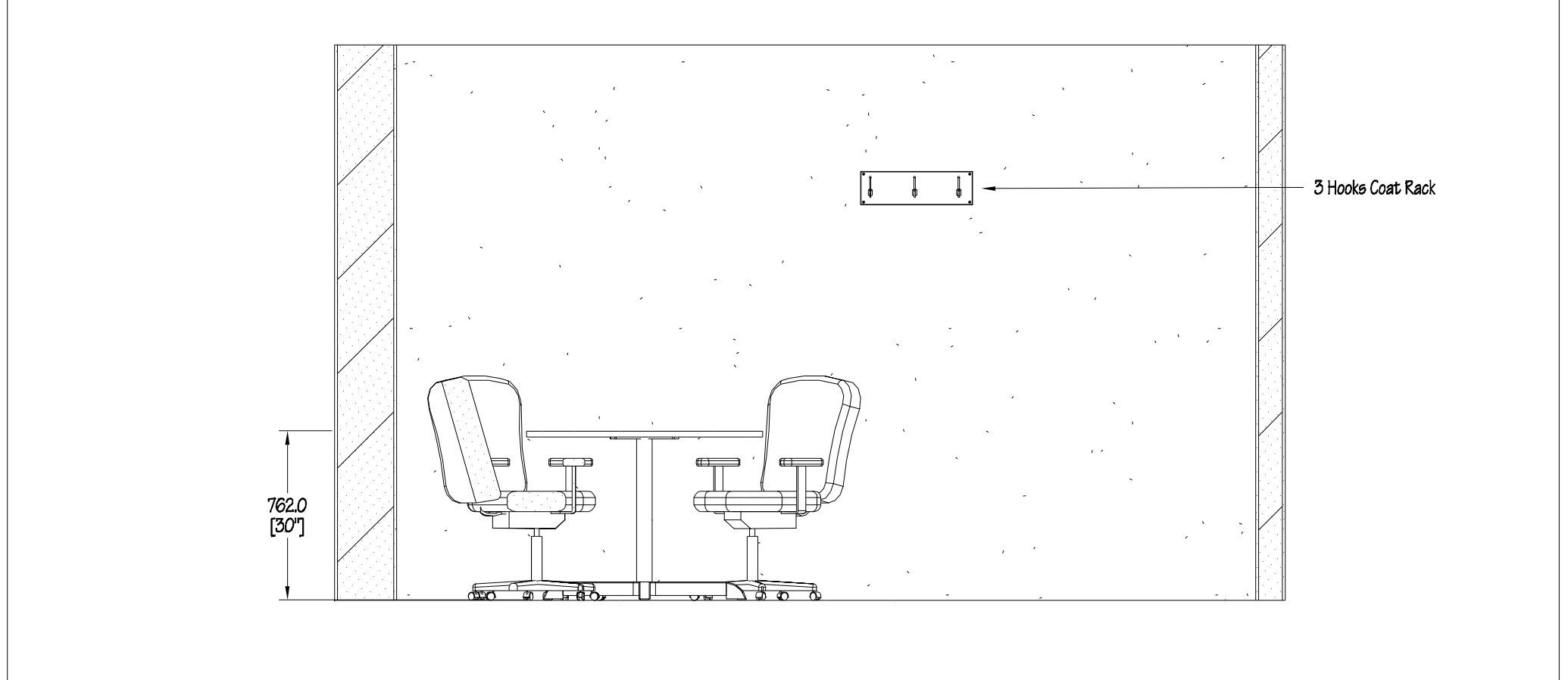


DRAWING TITLE	50-Beds Units Director's Office
------------------	---------------------------------




DWG #	11631-423 CSC 50 Beds Units Director's Office.dwg							
SHEET #	4	OF	5	DATE	August 1, 2012		REVISION	DA
DRAWN BY	GXW	REVIEWED BY	EM	PROJECT #	----	QUOTE #	11631	

CSC Living Units

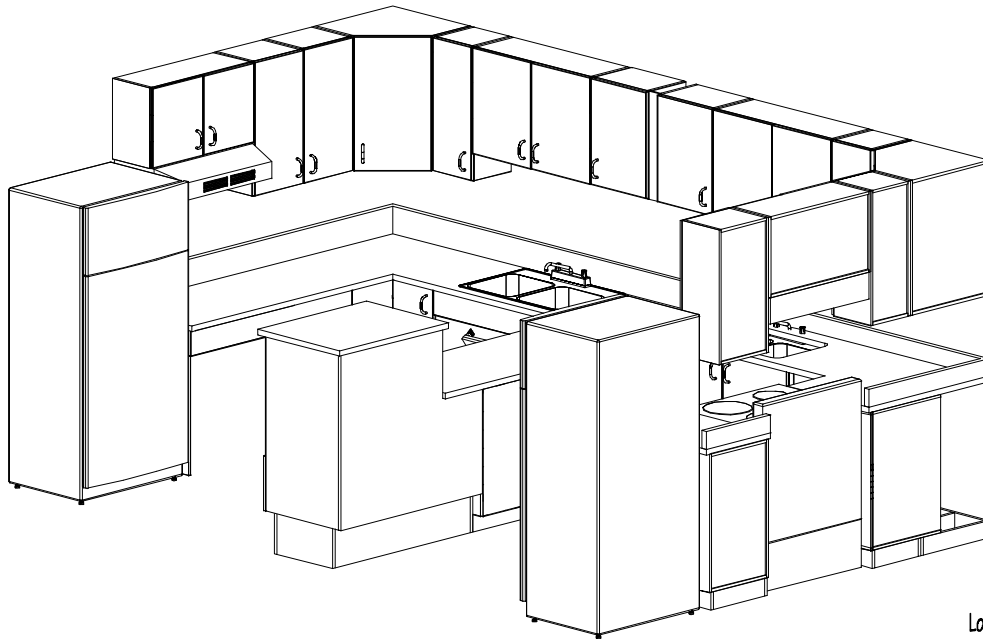


3 Elevation

 <p>CORCAN Industries Bath Institution 5775 Bath Rd. Hwy 33 Bath, Ontario KOH 1G0 Tel: 613-351-8215 Fax: 613-351-8216</p>	<p>These Drawings & Specifications Are The Property Of The Correctional Service Of Canada & Shall Not Be Reproduced, Copied, Or Used As The Basis For The Manufacture Or Sale Of Articles Without The Permission Of The Correctional Service Of Canada</p>	<table><tr><td>DRAWING TITLE</td><td>50-Beds Units Director's Office</td></tr></table>	DRAWING TITLE	50-Beds Units Director's Office
DRAWING TITLE	50-Beds Units Director's Office			

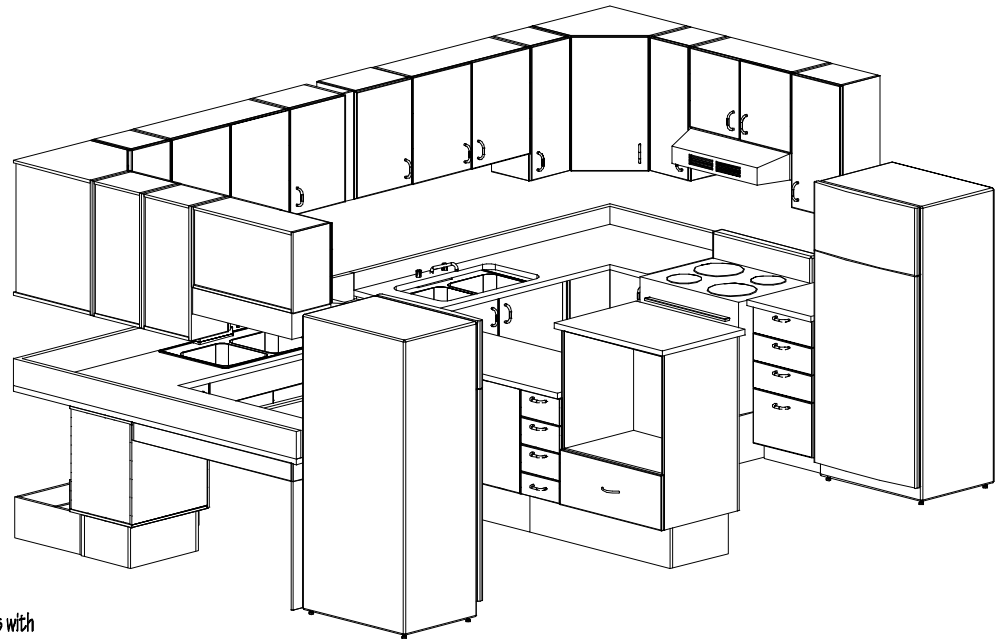
CSC PFV and Living Units

Rev#	Revision Description	Drawn By	Rev Date
DA	Production	JC	1-Aug-12



on Barrier Free Side

4 Keys Different on Upper Cabinets
2 Keys Different on Base Cabinets




on Standard Side

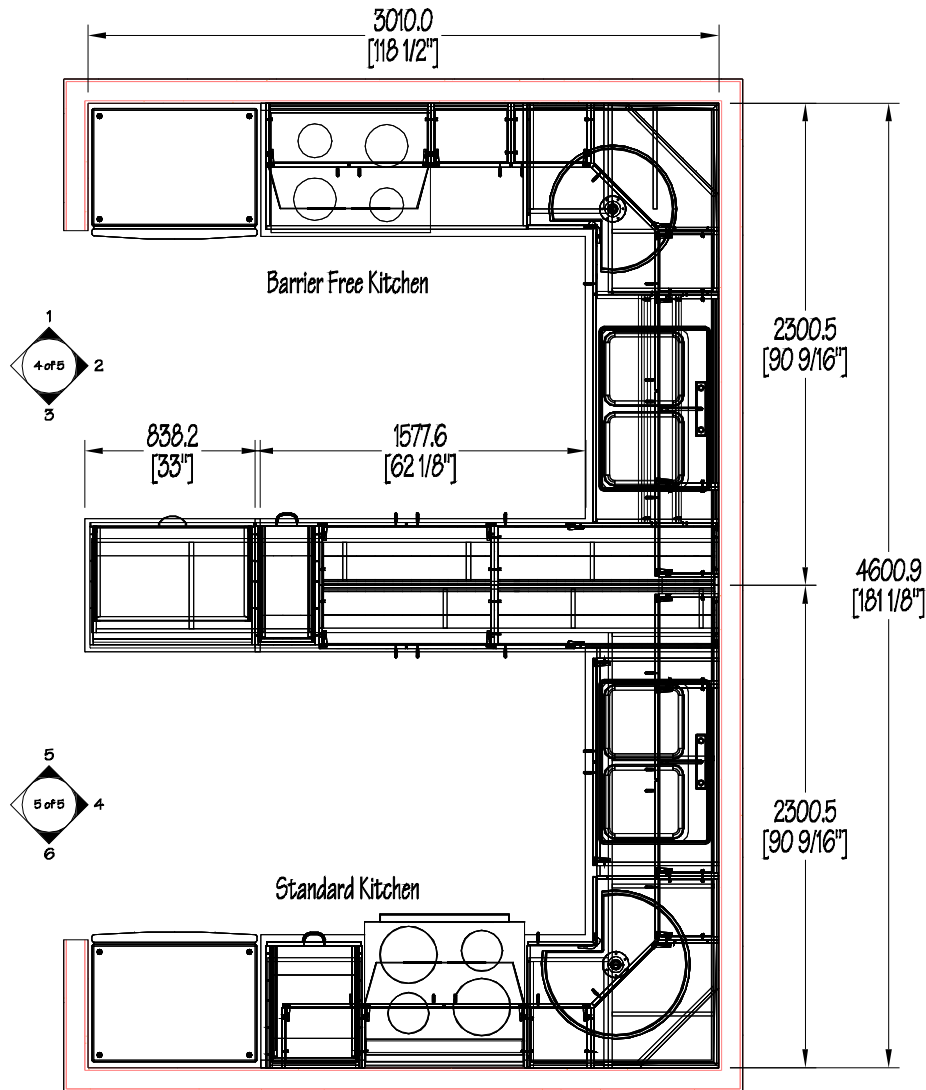
4 Keys Different on Upper Cabinets
2 Keys Different on Base Cabinets

Locks with
1 Master Key for All


No Lock above Sink or Stove
to Prevent Interference

CUSTOMER DESIGN APPROVAL <small>Signature Approves Design Only & Does Not Constitute Agreement To Purchase.</small>								QUANTITY		2													
Finishes & Specifications:						DWG #		11631-423 CSC 50 Beds Units Kitchen-BF Typical.dwg															
Counter / Top Items		See Schedule		Counter / Top Edging		See Schedule		SHEET #		1 OF 4		DATE		August 1, 2012		REV #		DA					
Horizontal Items		See Schedule		Horizontal Edging		See Schedule		DRAWN BY		JC		REVIEWED BY		EM		PROJECT #		NA		QUOTE #		11631	
Vertical Items		See Schedule		Vertical Edging		See Schedule		DRAWING TITLE		50 Beds Units BF-Kitchen Typical													
These Drawings & Specifications Are The Property Of The Correctional Service Of Canada & Shall Not Be Reproduced, Copied, Or Used As The Basis For The Manufacture Or Sale Of Articles Without The Permission Of The Correctional Service Of Canada																							
																							

CSC PFV and Living Units



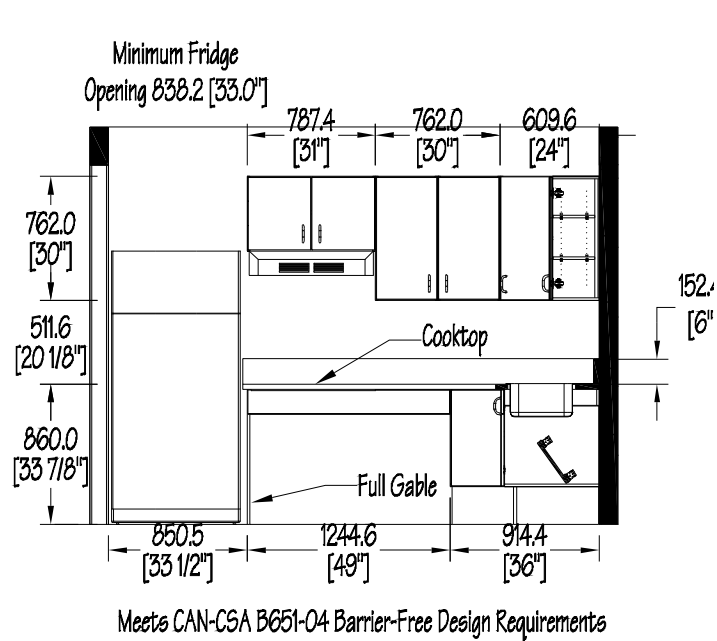
QUANTITY		2	DWG #		11631-423 CSC 50 Beds Units Kitchen-BF Typical.dwg					
			SHEET #		2 OF 4	DATE	August 1, 2012		REVISION	DA
			DRAWN BY		JC	REVIEWED BY	EM	PROJECT #	NA	QUOTE # 11631
			DRAWING TITLE		50 Beds Units BF-Kitchen Typical					



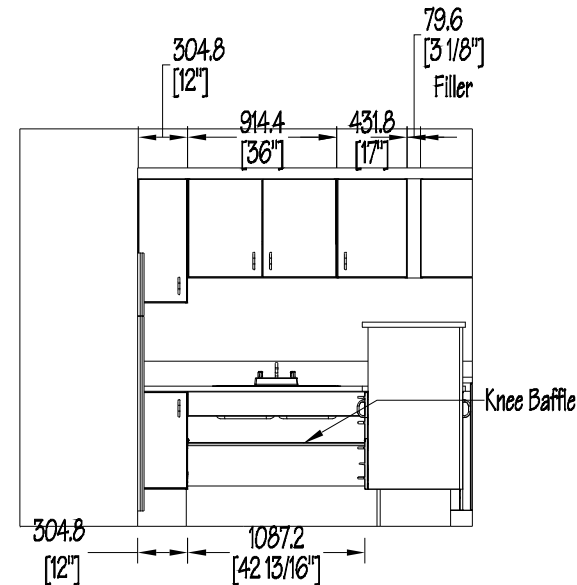
CORCAN Industries Bath Institution
5775 Bath Rd. Hwy 33 Bath, Ontario KOH 1G0
Tel: 613-351-8215 Fax: 613-351-8216

These Drawings & Specifications Are The Property Of The
Correctional Service Of Canada & Shall Not Be Reproduced, Copied,
Or Used As The Basis For The Manufacture Or Sale Of Articles
Without The Permission Of The Correctional Service Of Canada

CSC PFV and Living Units

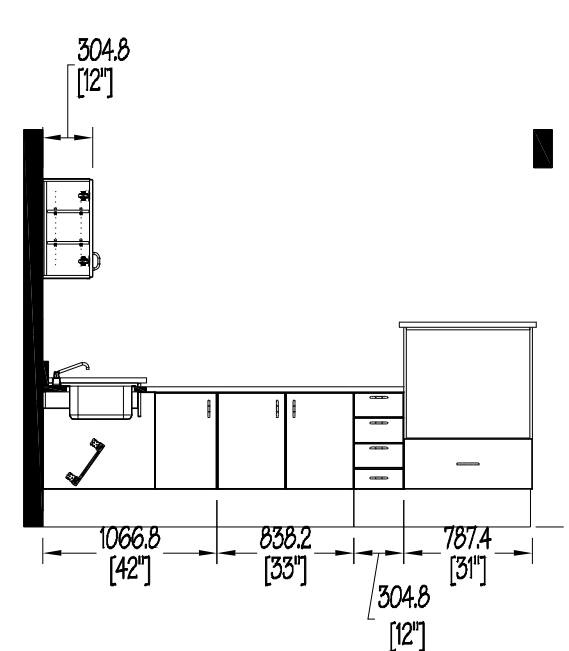


1 Elevation 1:45



Meets CAN-CSA B651-04 Barrier-Free Design Requirements

2 Elevation 1:45

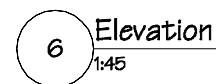
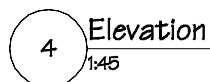


3 Peninsula Elevation
1:45

QUANTITY	2
----------	---

DWG #	11631-423 CSC 50 Beds Units Kitchen-BF Typical.dwg							
SHEET #	3	OF	4	DATE	August 1, 2012		REVISION	DA
DRAWN BY	JC	REVIEWED BY	EM	PROJECT #	NA	QUOTE #	11631	

DRAWING TITLE	50 Beds Units BF-Kitchen Typical
------------------	----------------------------------

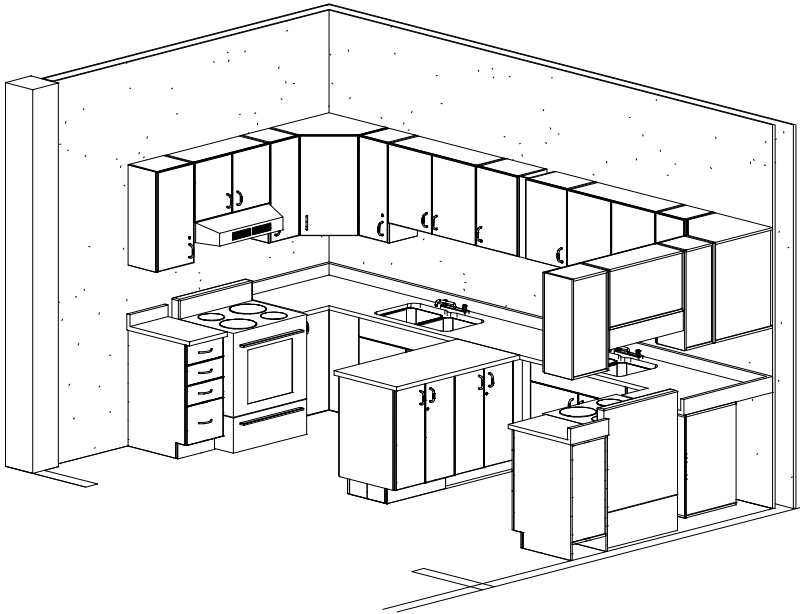
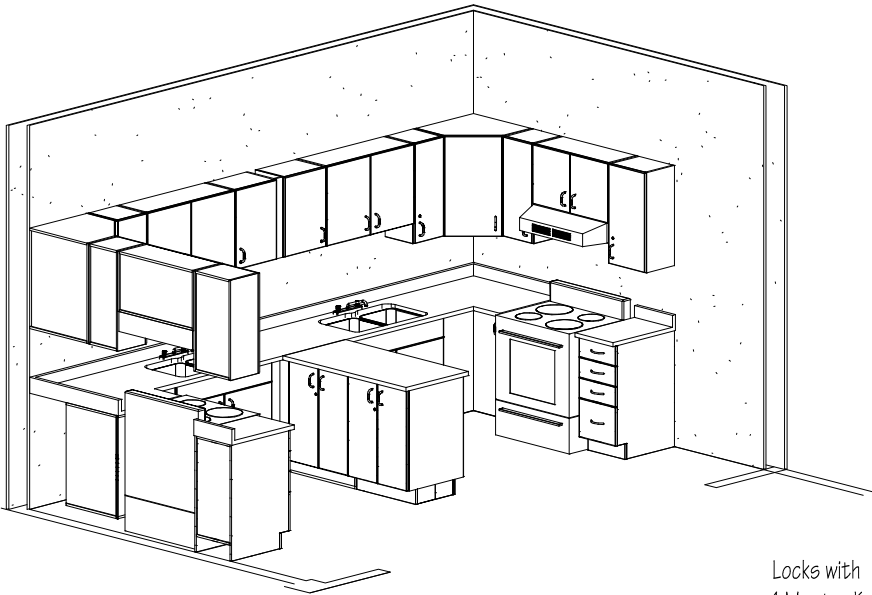


DWG #	11631-423 CSC 50 Beds Units Kitchen-BF Typical.dwg							
SHEET #	4	OF	4	DATE	August 1, 2012		REVISION	DA
DRAWN BY	JC	REVIEWED BY	EM	PROJECT #	NA	QUOTE #	11631	

50 Beds Units BF-Kitchen Typical

These Drawings & Specifications Are The Property Of The
Correctional Service Of Canada & Shall Not Be Reproduced, Copied,
Or Used As The Basis For The Manufacture Or Sale Of Articles
Without The Permission Of The Correctional Service Of Canada


Rev#	Revision Description	Drawn By	Rev Date
DA	Production	JC	1-Aug-12



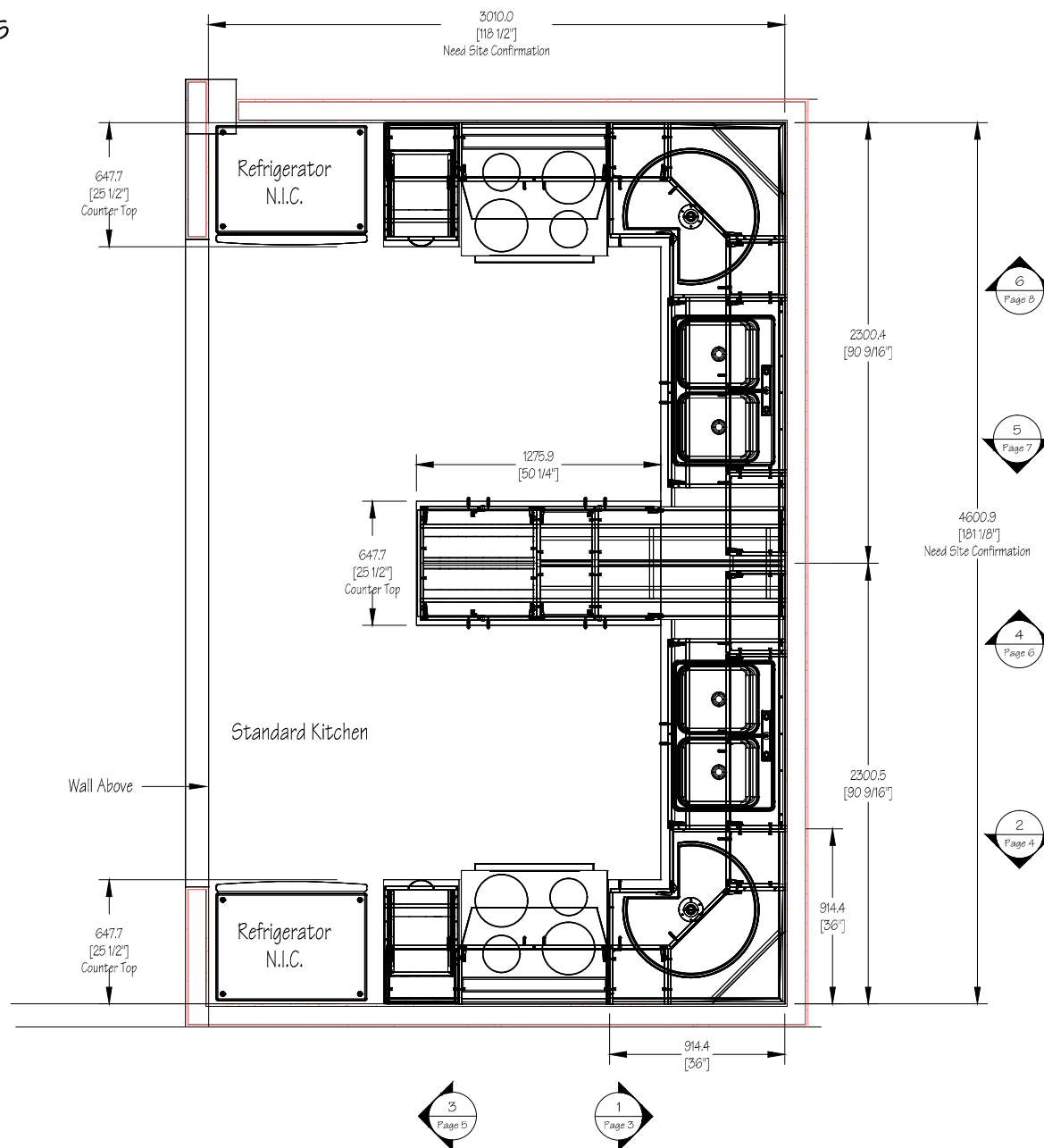
Locks with
1 Master Key for All

on Each Side
4 Keys Different on Upper Cabinets
2 Keys Different on Base Cabinets

No Lock above Sink or Stove
to Prevent Interference

CUSTOMER DESIGN APPROVAL										QUANTITY		4															
Signature Approves Design Only & Does Not Constitute Agreement To Purchase.																											
Finishes & Specifications:										DWG #		11631-423 CSC 50 Beds Units Kitchen-Standard.dwg															
Counter / Top Items			See Schedule			Counter / Top Edging			See Schedule			SHEET #		1 OF 8		DATE		August 1, 2012		REV #		DA					
Horizontal Items			See Schedule			Horizontal Edging			See Schedule			DRAWN BY		GXW		REVIEWED BY		EM		PROJECT #		----		QUOTE #		11631	
Vertical Items			See Schedule			Vertical Edging			See Schedule			DRAWING TITLE		50 Beds Units Standard-Kitchen													
These Drawings & Specifications Are The Property Of The Correctional Service Of Canada & Shall Not Be Reproduced, Copied, Or Used As The Basis For The Manufacture Or Sale Of Articles Without The Permission Of The Correctional Service Of Canada																											
																											

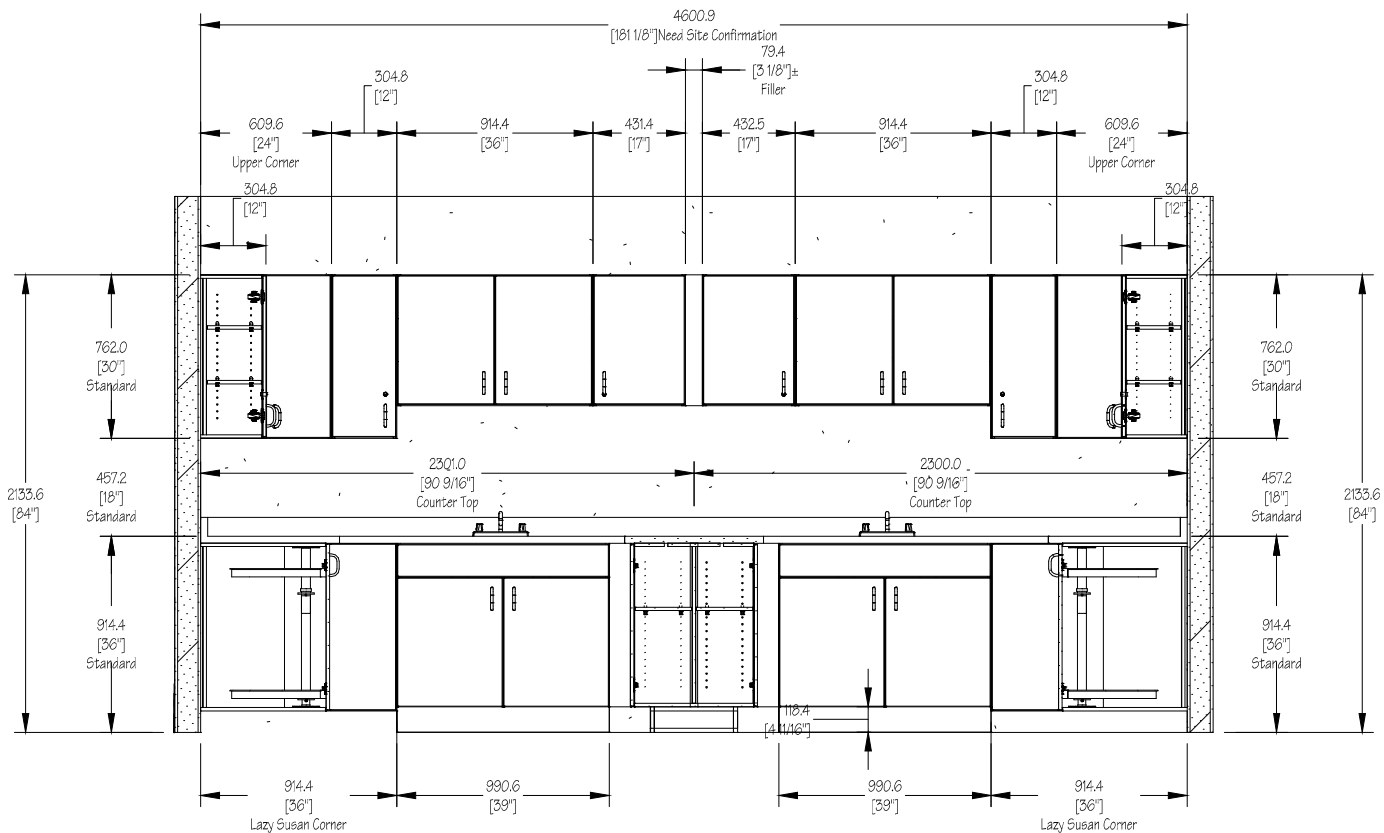
CSC PFV and Living Units



DWG #	11631-423 CSC 50 Beds Units Kitchen-Standard.dwg							
SHEET #	2	OF	8	DATE	August 1, 2012		REVISION	DA
DRAWN BY	GXW	REVIEWED BY	EM	PROJECT #	----	QUOTE #	11631	

DRAWING TITLE	50 Beds Units Standard-Kitchen
------------------	--------------------------------

CSC PFV and Living Units



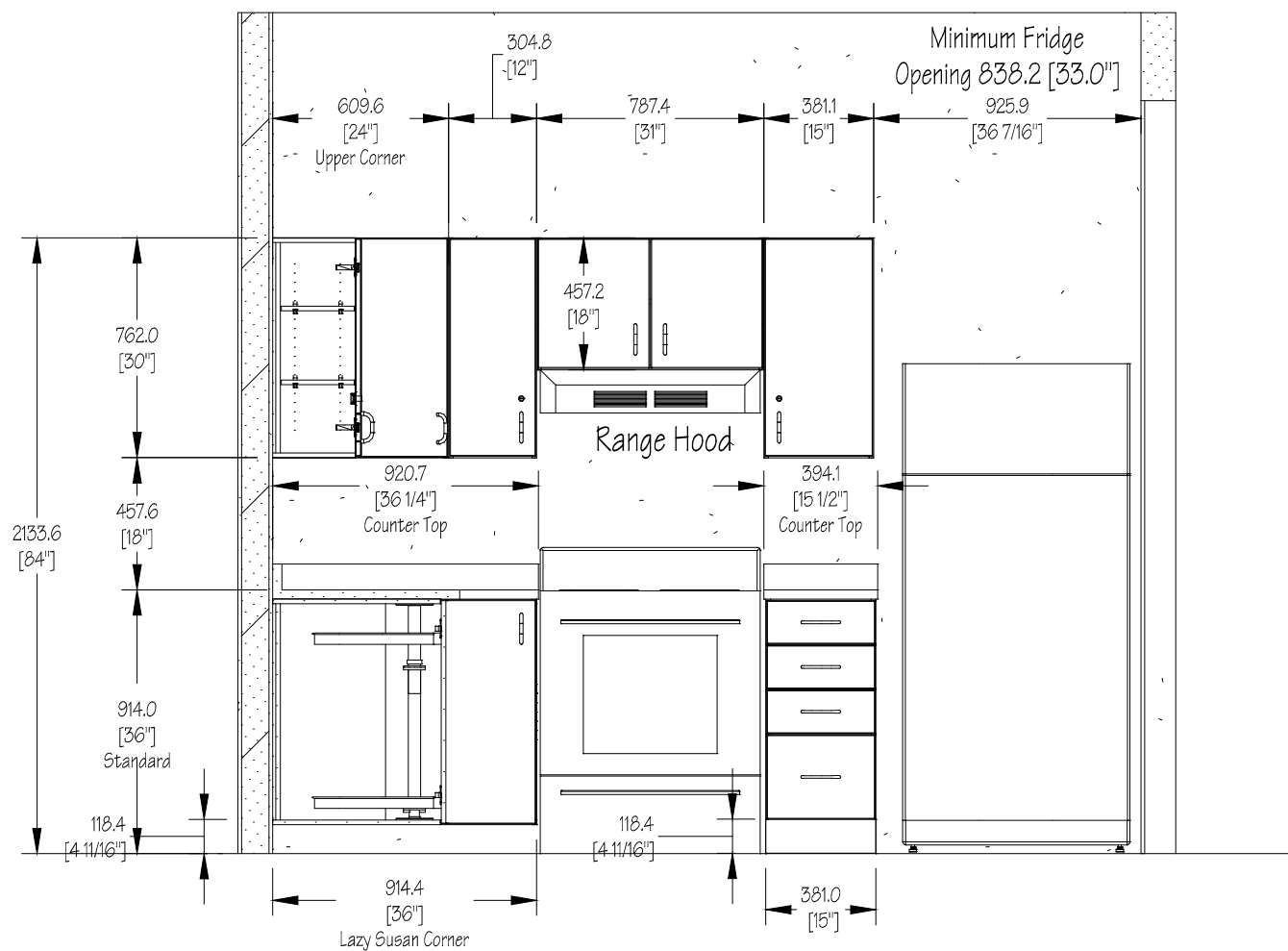
All Kicks are Made of 19mm Plywood and Covered with Floor Tiles

1 Elevation

DWG #	11631-423 CSC 50 Beds Units Kitchen-Standard.dwg							
SHEET #	3	OF	8	DATE	August 1, 2012		REVISION	DA
DRAWN BY	GXW	REVIEWED BY	EM	PROJECT #	----	QUOTE #	11631	
DRAWING TITLE	50 Beds Units Standard-Kitchen							

QUANTITY	4
----------	---

CSC PFV and Living Units



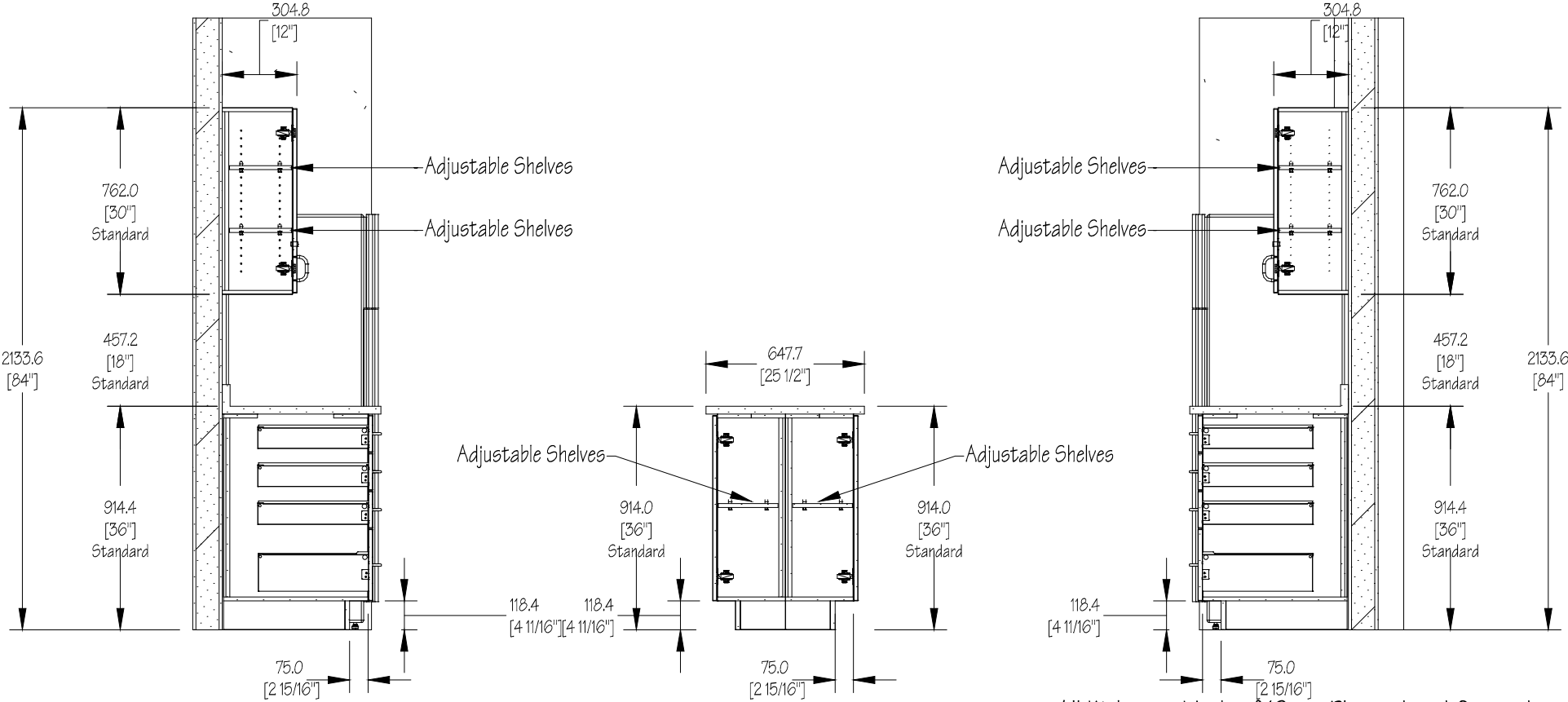
2 Elevation

QUANTITY	4
----------	---

DWG #	11631-423 CSC 50 Beds Units Kitchen-Standard.dwg							
SHEET #	4	OF	8	DATE	August 1, 2012		REVISION	DA
DRAWN BY	GXW	REVIEWED BY	EM	PROJECT #	----	QUOTE #	11631	

DRAWING TITLE	50 Beds Units Standard-Kitchen
---------------	--------------------------------

CSC PFV and Living Units



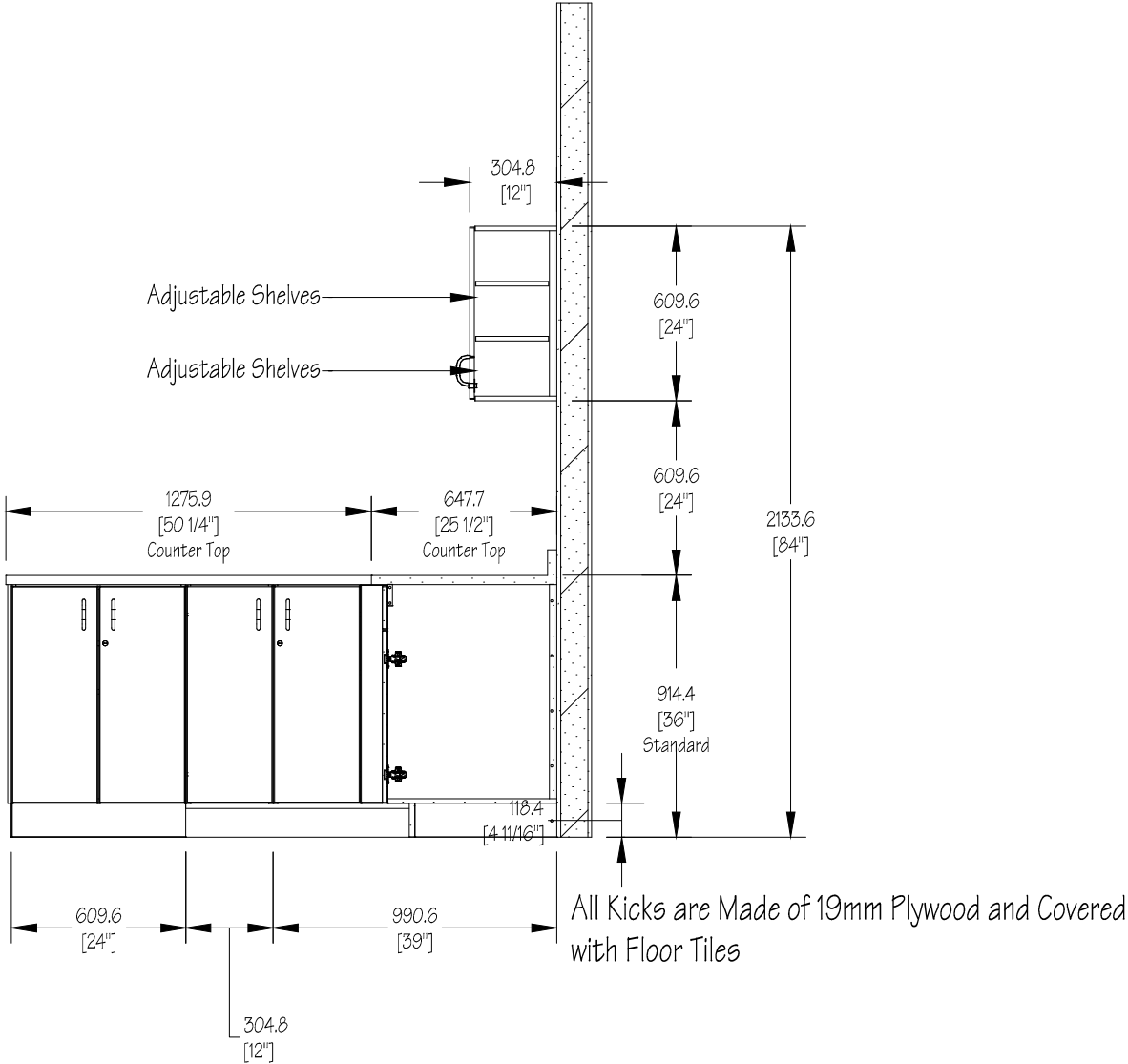
All Kicks are Made of 19mm Plywood and Covered with Floor Tiles

3 Elevation

DWG #	11631-423 CSC 50 Beds Units Kitchen-Standard.dwg						
SHEET #	5	OF	8	DATE	August 1, 2012		REVISION DA
DRAWN BY	GXW	REVIEWED BY	EM	PROJECT #	----	QUOTE #	11631
DRAWING TITLE	50 Beds Units Standard-Kitchen						

QUANTITY	4
----------	---

CSC PFV and Living Units



4 Elevation

DWG #	11631-423 CSC 50 Beds Units Kitchen-Standard.dwg						
SHEET #	6	OF	8	DATE	August 1, 2012		REVISION DA
DRAWN BY	GXW	REVIEWED BY	EM	PROJECT #	----	QUOTE #	11631
DRAWING TITLE	50 Beds Units Standard-Kitchen						

QUANTITY	4
----------	---



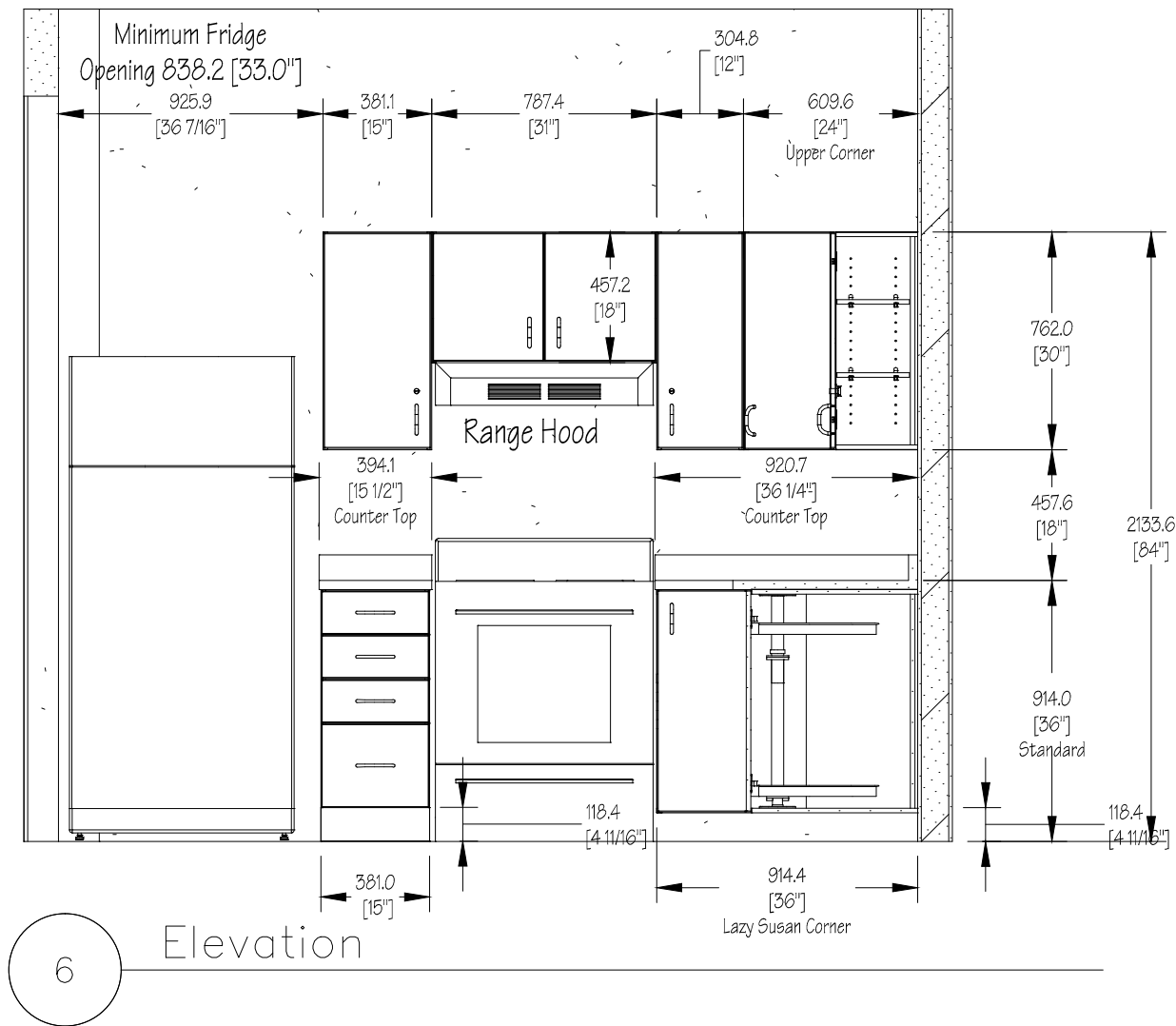
CORCAN Industries Bath Institution
5775 Bath Rd. Hwy 33 Bath, Ontario KOH 1G0
Tel: 613-351-8215 Fax: 613-351-8216

These Drawings & Specifications Are The Property Of The
Correctional Service Of Canada & Shall Not Be Reproduced, Copied,
Or Used As The Basis For The Manufacture Or Sale Of Articles
Without The Permission Of The Correctional Service Of Canada.

A diagram showing a horizontal line representing the top boundary of a fluid element. To the left of this line is the text "Wall Above". An arrow points from the text "Wall Above" to the horizontal line.



CSC PFV and Living Units



DWG #	11631-423 CSC 50 Beds Units Kitchen-Standard.dwg							
SHEET #	8	OF	8	DATE	August 1, 2012		REVISION	DA
DRAWN BY	GXW	REVIEWED BY	EM	PROJECT #	----	QUOTE #	11631	

DRAWING TITLE	50 Beds Units Standard-Kitchen							
---------------	--------------------------------	--	--	--	--	--	--	--

QUANTITY	4
----------	---

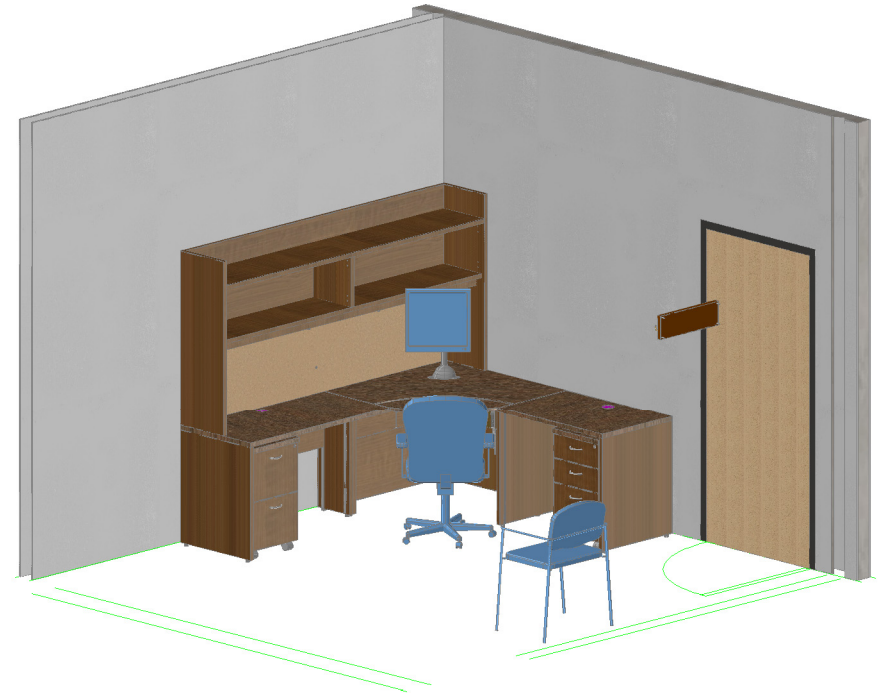
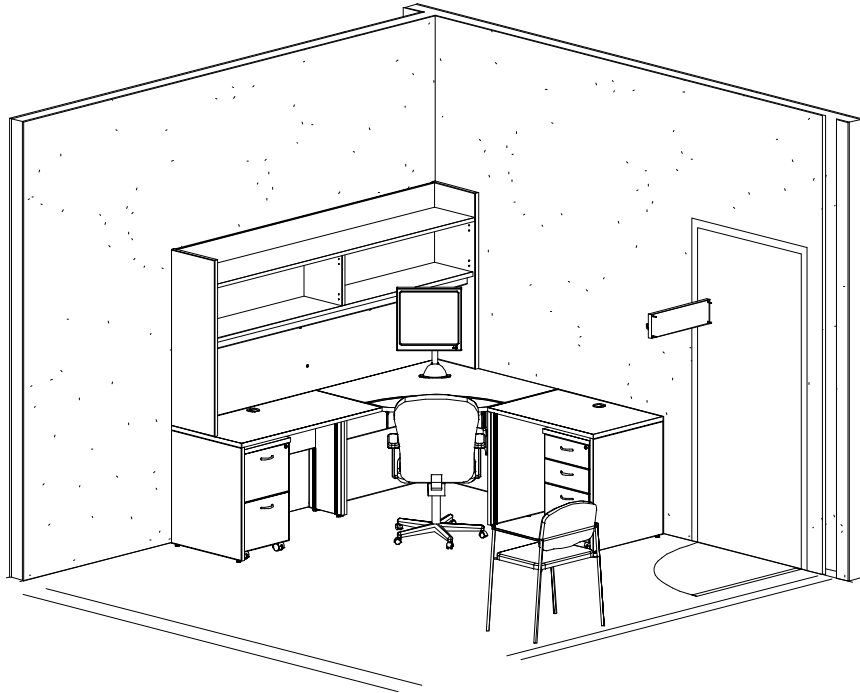


CORCAN Industries Bath Institution
5775 Bath Rd. Hwy 33 Bath, Ontario KOH 1G0
Tel: 613-351-8215 Fax: 613-351-8216

These Drawings & Specifications Are The Property Of The Correctional Service Of Canada & Shall Not Be Reproduced, Copied, Or Used As The Basis For The Manufacture Or Sale Of Articles Without The Permission Of The Correctional Service Of Canada.

CSC Living Units

Rev#	Revision Description	Drawn By	Rev Date
DA	Production	JC	1-Aug-12



CUSTOMER DESIGN APPROVAL

Signature Approves Design Only & Does Not Constitute Agreement To Purchase.

QUANTITY

9

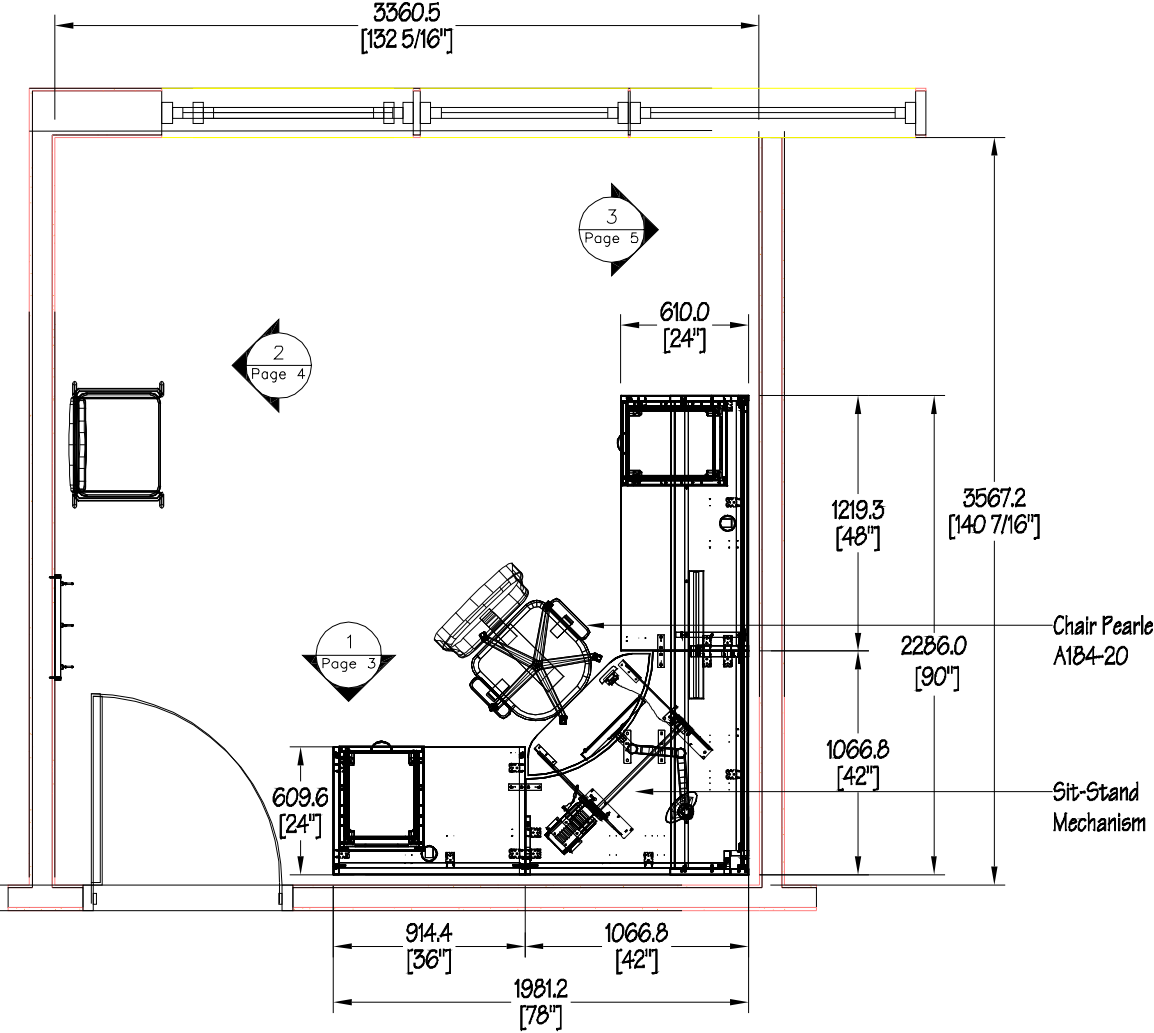
Finishes & Specifications:


Counter / Top Items	See Schedule	Counter / Top Edging	See Schedule
Horizontal Items	See Schedule	Horizontal Edging	See Schedule
Vertical Items	See Schedule	Vertical Edging	See Schedule

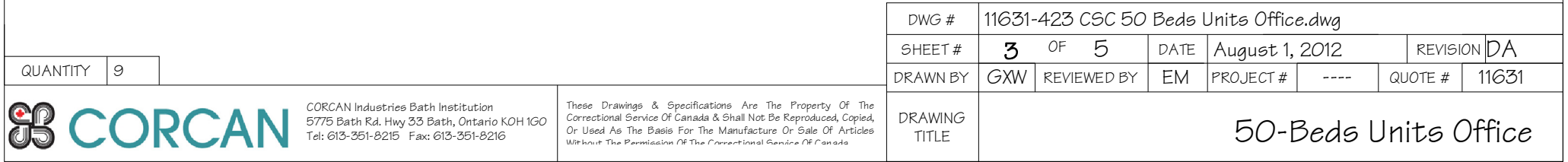
These Drawings & Specifications Are The Property Of The Correctional Service Of Canada & Shall Not Be Reproduced, Copied, Or Used As The Basis For The Manufacture Or Sale Of Articles Without The Permission Of The Correctional Service Of Canada

DWG #	11631-423 CSC 50 Beds Units Office.dwg					
SHEET #	1 OF 5	DATE	August 1, 2012	REV #	DA	
DRAWN BY	GXW	REVIEWED BY	EM	PROJECT #	----	QUOTE # 11631
DRAWING TITLE	50-Beds Units Office					

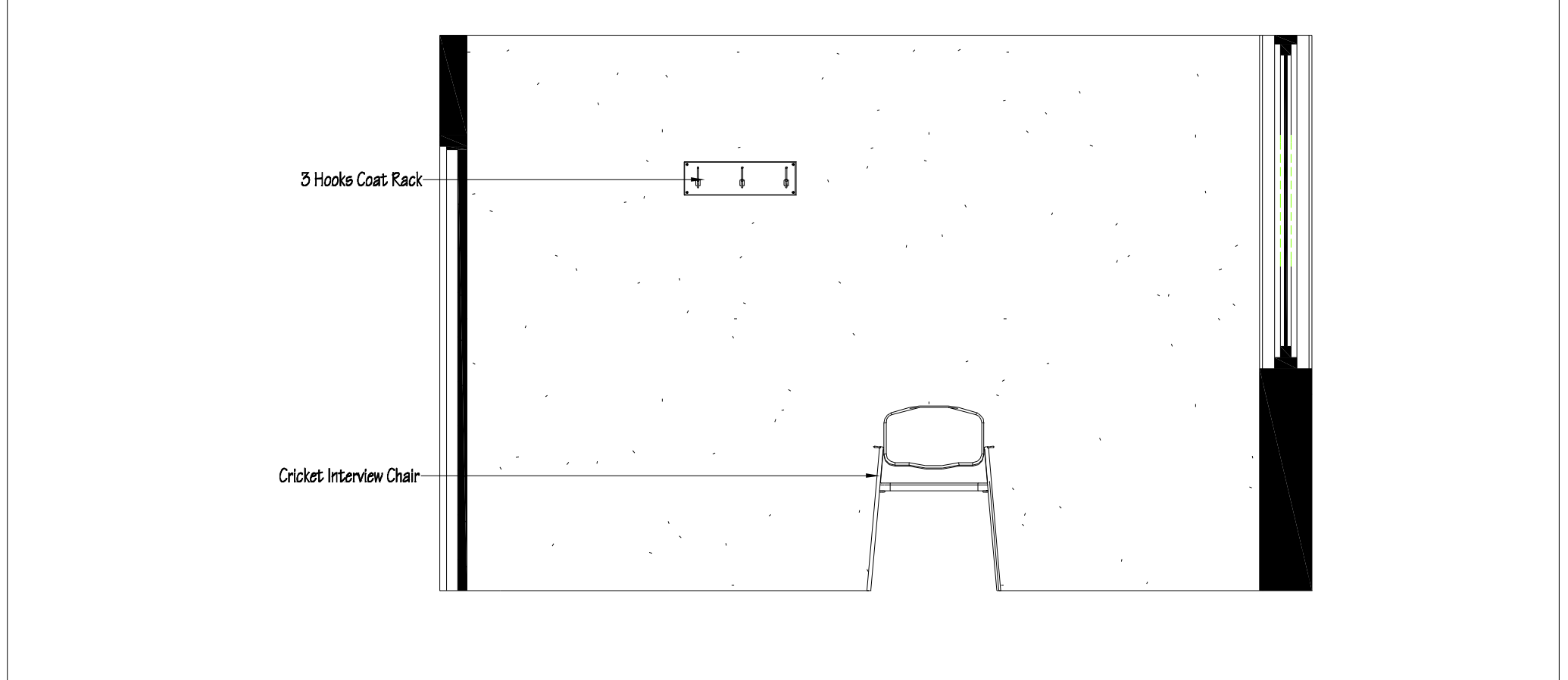
CSC Living Units




QUANTITY		9	<div><div>CORCAN Industries Bath Institution 5775 Bath Rd. Hwy 33 Bath, Ontario K0H 1G0 Tel: 613-351-8215 Fax: 613-351-8216</div></div> <div>These Drawings & Specifications Are The Property Of The Correctional Service Of Canada & Shall Not Be Reproduced, Copied, Or Used As The Basis For The Manufacture Or Sale Of Articles Without The Permission Of The Correctional Service Of Canada</div>	DWG #	11631-423 CSC 50 Beds Units Office.dwg												
DRAWN BY		GXW		REVIEWED BY	EM	PROJECT #	----	QUOTE #	11631	SHEET #	2	OF	5	DATE	August 1, 2012	REVISION	DA
DRAWING TITLE		50-Beds Units Office															



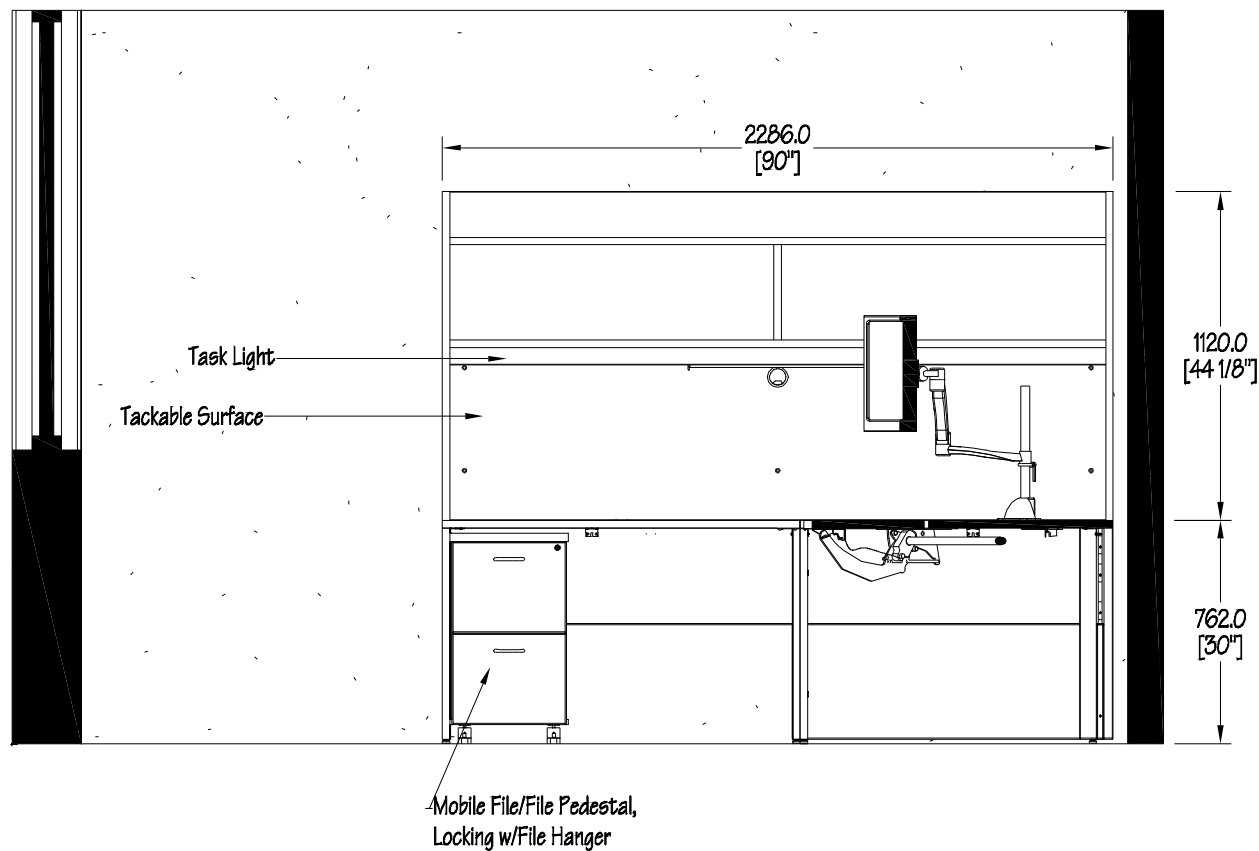
CSC Living Units



Elevation

 CORCAN	CORCAN Industries Bath Institution 5775 Bath Rd. Hwy 33 Bath, Ontario KOH 1G0 Tel: 613-351-8215 Fax: 613-351-8216	These Drawings & Specifications Are The Property Of The Correctional Service Of Canada & Shall Not Be Reproduced, Copied, Or Used As The Basis For The Manufacture Or Sale Of Articles Without The Permission Of The Correctional Service Of Canada	DRAWING TITLE	50-Beds Units Office
--	---	--	------------------	----------------------

CSC Living Units



Elevation

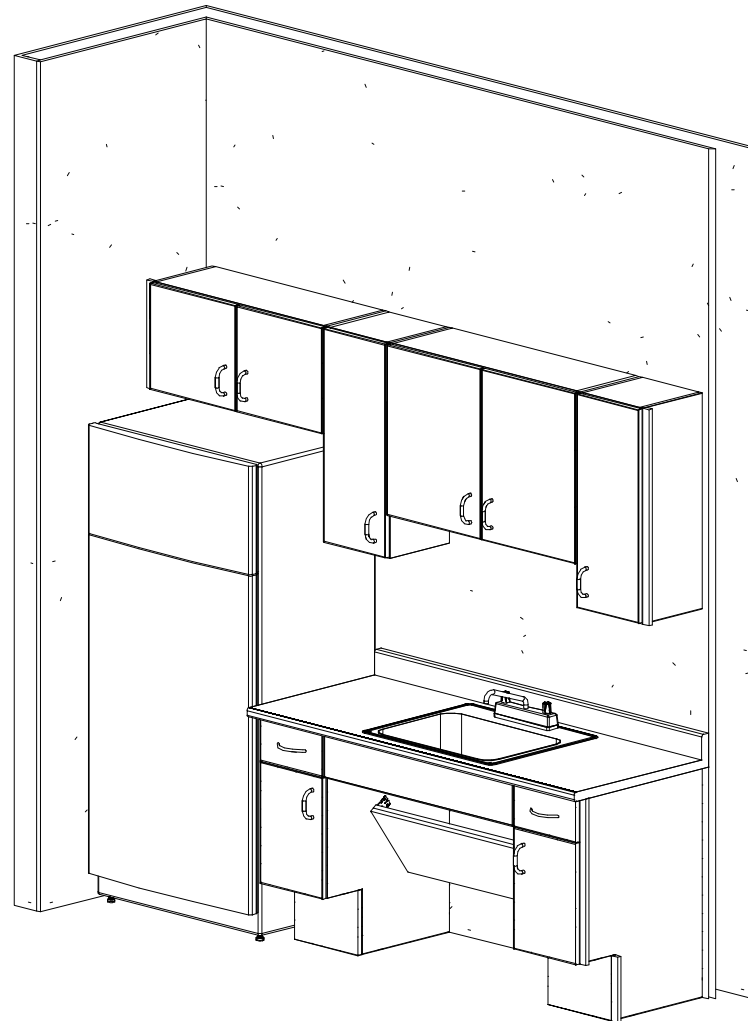
QUANTITY	9
----------	---


DWG #	11631-423 CSC 50 Beds Units Office.dwg							
SHEET #	5	OF	5	DATE	August 1, 2012		REVISION	DA
DRAWN BY	GXW	REVIEWED BY	EM	PROJECT #	----	QUOTE #	11631	

DRAWING TITLE	50-Beds Units Office
------------------	----------------------

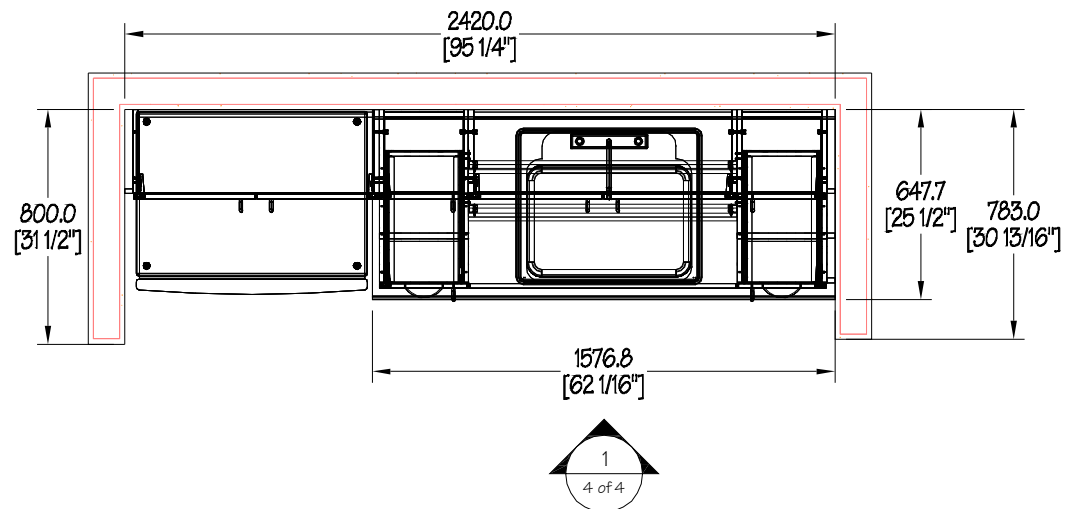
CSC PFV & Living Units

Rev#	Revision Description	Drawn By	Rev Date
DA	Production	JC	1-Aug-12



CUSTOMER DESIGN APPROVAL <small>Signature Approves Design Only & Does Not Constitute Agreement To Purchase.</small>								QUANTITY		1									
Finishes & Specifications:						DWG #		11631-423 CSC 50 Beds Units Rm 206 Kitchen.dwg											
Counter / Top Items		See Schedule		Counter / Top Edging		See Schedule		SHEET #		1 of 4		DATE		June 14, 2012		REV #		DA	
Horizontal Items		See Schedule		Horizontal Edging		See Schedule		DRAWN BY		JC		REVIEWED BY		EM		PROJECT #		NA	
Vertical Items		See Schedule		Vertical Edging		See Schedule										QUOTE #		11631	
These Drawings & Specifications Are The Property Of The Correctional Service Of Canada & Shall Not Be Reproduced, Copied, Or Used As The Basis For The Manufacture Or Sale Of Articles Without The Permission Of The Correctional Service Of Canada						DRAWING TITLE		50 Man Kitchen 206											
																			

CSC PFV & Living Units



QUANTITY	1
----------	---

DWG #	11631-423 CSC 50 Beds Units Rm 206 Kitchen.dwg							
SHEET #	2	OF	4	DATE	June 14, 2012		REVISION	DA
DRAWN BY	JC	REVIEWED BY	EM	PROJECT #	NA	QUOTE #	11631	

DRAWING TITLE	50 Man Kitchen 206
------------------	--------------------

CSC PFV & Living Units



QUANTITY	1
----------	---

DWG #	11631-423 CSC 50 Beds Units Rm 206 Kitchen.dwg							
SHEET #	3	OF	4	DATE	June 14, 2012		REVISION	DA
DRAWN BY	JC	REVIEWED BY	EM	PROJECT #	NA	QUOTE #	11631	

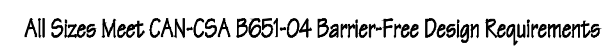


CORCAN Industries Bath Institution
5775 Bath Rd. Hwy 33 Bath, Ontario KOH 1G0
Tel: 613-351-8215 Fax: 613-351-8216

These Drawings & Specifications Are The Property Of The
Correctional Service Of Canada & Shall Not Be Reproduced, Copied,
Or Used As The Basis For The Manufacture Or Sale Of Articles
Without The Permission Of The Correctional Service Of Canada.

DRAWING
TITLE

50 Man Kitchen 206



1 Elevation 1:30

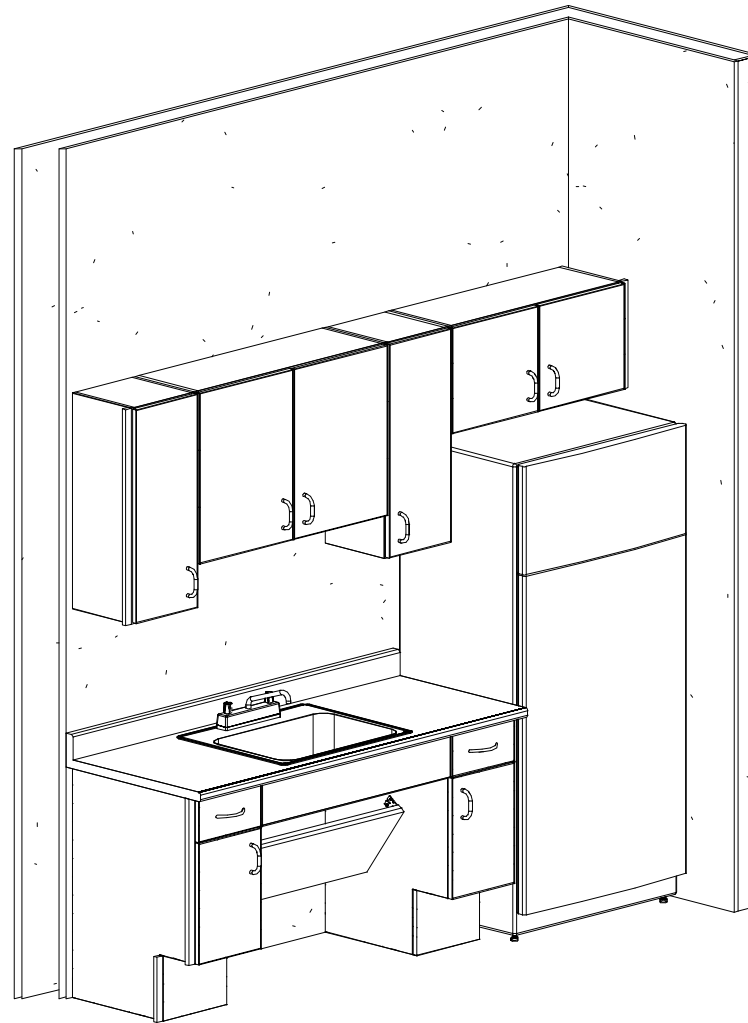
 **CORCAN** CORCAN Industries Bath Institution
5775 Bath Rd. Hwy 33 Bath, Ontario KOH 1G0
Tel: 613-351-8215 Fax: 613-351-8216


These Drawings & Specifications Are The Property Of The Correctional Service Of Canada & Shall Not Be Reproduced, Copied, Or Used As The Basis For The Manufacture Or Sale Of Articles Without The Permission Of The Correctional Service Of Canada.

DWG #	11631-423 CSC 50 Beds Units Rm 206 Kitchen.dwg							
SHEET #	4 OF 4		DATE	June 14, 2012			REVISION	DA
DRAWN BY	JC	REVIEWED BY	EM	PROJECT #	NA	QUOTE #	11631	
DRAWING TITLE	50 Man Kitchen 206							

CSC PFV & Living Units

Rev#	Revision Description	Drawn By	Rev Date
D2	Correct Fillers	JC	14-Jun-12



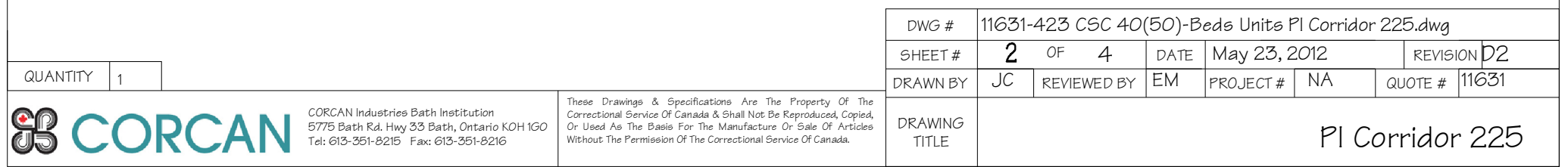
CUSTOMER DESIGN APPROVAL								QUANTITY		1													
Signature Approves Design Only & Does Not Constitute Agreement To Purchase.																							
Finishes & Specifications:						DWG #		11631-423 CSC 40(50)-Beds Units PI Corridor 225.dwg															
Counter / Top Items		Please Provide Material / Colour Choice		Counter / Top Edging		To Match		SHEET #		1 of 4		DATE		May 23, 2012		REV #		D2					
Horizontal Items		Please Provide Material / Colour Choice		Horizontal Edging		To Match		DRAWN BY		JC		REVIEWED BY		EM		PROJECT #		NA		QUOTE #		11631	
Vertical Items		Please Provide Material / Colour Choice		Vertical Edging		To Match		DRAWING TITLE		PI Corridor 225													
These Drawings & Specifications Are The Property Of The Correctional Service Of Canada & Shall Not Be Reproduced, Copied, Or Used As The Basis For The Manufacture Or Sale Of Articles Without The Permission Of The Correctional Service Of Canada																							
																							

CSC PFV & Living Units

Technical drawing of a CSC PFV & Living Unit. The drawing shows a side elevation of the unit with the following dimensions:

- Overall width: 2420.0 [95 1/4"]
- Overall height: 800.0 [31 1/2"]
- Height of the upper section: 783.0 [30 13/16"]
- Height of the lower section: 647.7 [25 1/2"]
- Width of the lower section: 1576.8 [62 1/16"]

A section symbol is located below the drawing, indicating a section cut through the unit. The symbol consists of a circle with the number 1 inside, and the text 4 of 4 below it.



DRAWING TITLE	PI Corridor 225
------------------	-----------------

PI Corridor 225

CSC PFV & Living Units



QUANTITY	1
----------	---

DWG #	11631-423 CSC 40(50)-Beds Units Pl Corridor 225.dwg							
SHEET #	3 OF 4		DATE	May 23, 2012			REVISION	D2
DRAWN BY	JC	REVIEWED BY	EM	PROJECT #	NA	QUOTE #	11631	

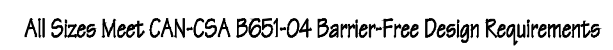


CORCAN Industries Bath Institution
5775 Bath Rd. Hwy 33 Bath, Ontario KOH 1G0
Tel: 613-351-8215 Fax: 613-351-8216

These Drawings & Specifications Are The Property Of The
Correctional Service Of Canada & Shall Not Be Reproduced, Copied,
Or Used As The Basis For The Manufacture Or Sale Of Articles
Without The Permission Of The Correctional Service Of Canada.

DRAWING
TITLE

PI Corridor 225



1 Elevation 1:30

DWG #	11631-423 CSC 40(50)-Beds Units PI Corridor 225.dwg							
SHEET #	4	OF	4	DATE	May 23, 2012		REVISION	D2
DRAWN BY	JC	REVIEWED BY	EM	PROJECT #	NA	QUOTE #	11631	

QUANTITY	1
----------	---