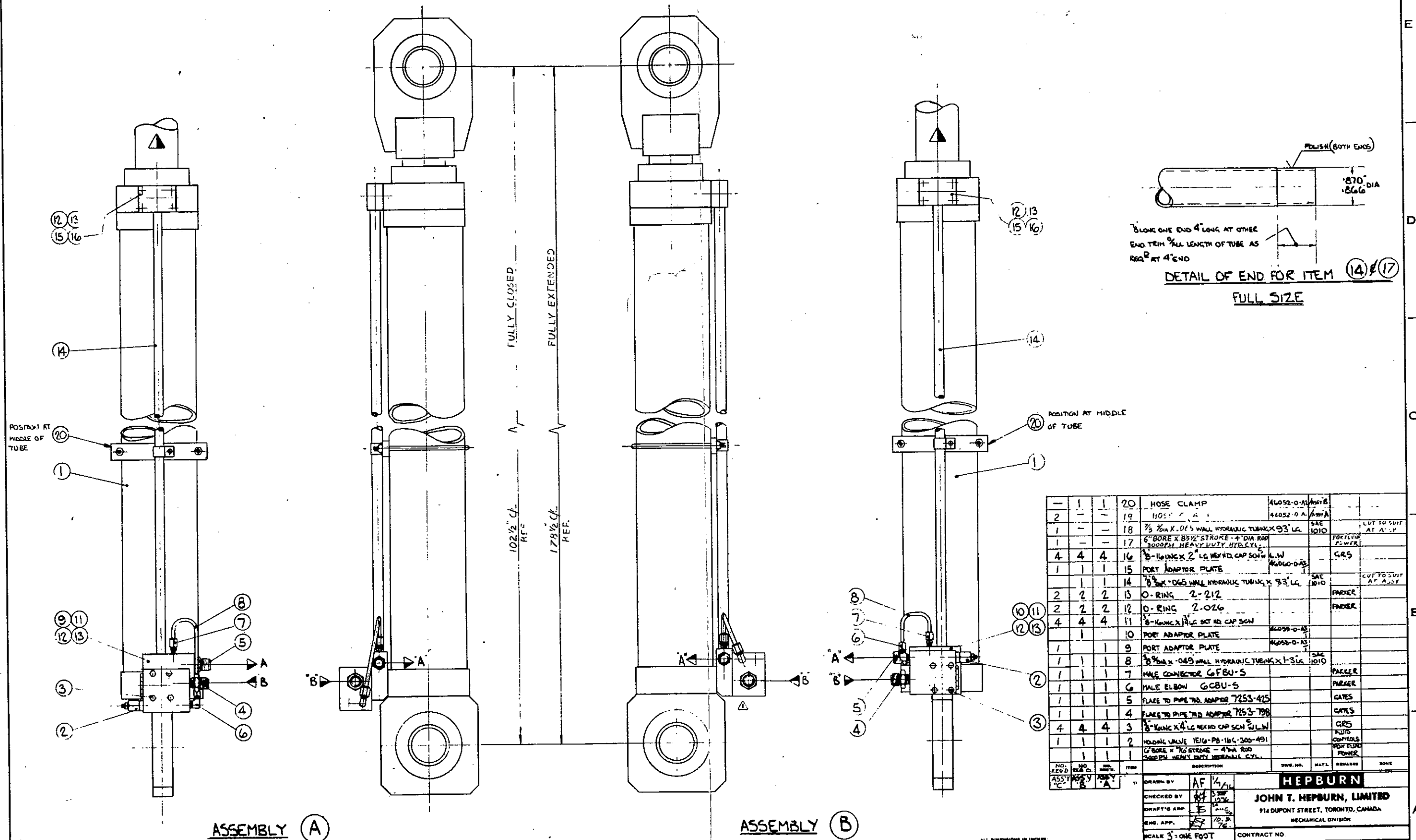


This drawing, in design and detail is the property of
JOHN T. HEPBURN, LIMITED
and must not be used or copied except in connection with our work, and only after instructions are given from this company. All rights of design or invention are reserved.



NO. REQ'D	NO. REQ'D	NO. REQ'D	ITEM	DESCRIPTION	QTY. NO.	MAT'L	REMARKS	NOTE
1	1	1	20	HOSE CLAMP	14052-0-A	ASTB		
2	1	1	19	HOSE CLAMP	14052-0-A	ASTB		
1	1	1	18	3/8" DIA X .045" WALL HYDRAULIC TUBING X 93" LG	14052-0-A	ASTB		
1	1	1	17	6" BORE X .045" STROKE - 4" DIA ROD 3000 PSI HEAVY DUTY HYDRAULIC CYL.	14052-0-A	ASTB		
4	4	4	16	8" DIA X 1/4" LG HEX HD CAP SCW	14052-0-A	ASTB		
1	1	1	15	PORT ADAPTOR PLATE	14052-0-A	ASTB		
1	1	1	14	3/8" DIA X .045" WALL HYDRAULIC TUBING X 93" LG	14052-0-A	ASTB		
2	2	2	13	O-RING 2-212	14052-0-A	ASTB		
2	2	2	12	O-RING 2-024	14052-0-A	ASTB		
4	4	4	11	8" DIA X 1/4" LG HEX HD CAP SCW	14052-0-A	ASTB		
1	1	1	10	PORT ADAPTOR PLATE	14052-0-A	ASTB		
1	1	1	9	PORT ADAPTOR PLATE	14052-0-A	ASTB		
1	1	1	8	3/8" DIA X .045" WALL HYDRAULIC TUBING X 1-16	14052-0-A	ASTB		
1	1	1	7	MALE CONNECTOR GCBU-5	14052-0-A	ASTB		
1	1	1	6	MALE ELBOW GCBU-5	14052-0-A	ASTB		
1	1	1	5	FLANGE TO PIPE TEO ADAPTOR 7253-475	14052-0-A	ASTB		
1	1	1	4	FLANGE TO PIPE TEO ADAPTOR 7253-798	14052-0-A	ASTB		
4	4	4	3	8" DIA X 1/4" LG HEX HD CAP SCW	14052-0-A	ASTB		
1	1	1	2	MOODING VALVE 1E1G-PB-106-300-491	14052-0-A	ASTB		
1	1	1	1	6" BORE X 1/2" STROKE - 4" DIA ROD 3000 PSI HEAVY DUTY HYDRAULIC CYL.	14052-0-A	ASTB		

DRAWN BY	AF 1/4 JL	<div style="border: 1px solid black; padding: 5px; text-align: center;"> HEPBURN </div> <div style="text-align: center;"> JOHN T. HEPBURN, LIMITED 914 DUPONT STREET, TORONTO, CANADA MECHANICAL DIVISION </div>
CHECKED BY	AF 1/4 JL	
DRAFT'S APP.	AF 1/4 JL	
ENG. APP.	AF 1/4 JL	

SCALE 3" = ONE FOOT	CONTRACT NO.
REP. DWG.	CUSTOMER

TITLE		ARRANGEMENT OF LUFFING CYLINDERS AND ARTICULATING CYLINDER	
SHEET NO	1 OF 2	DWG. NO.	46057 - 0 - A1
EST. WGT.	1585 L.B.		
BY: [Signature]			

FTG 1-14