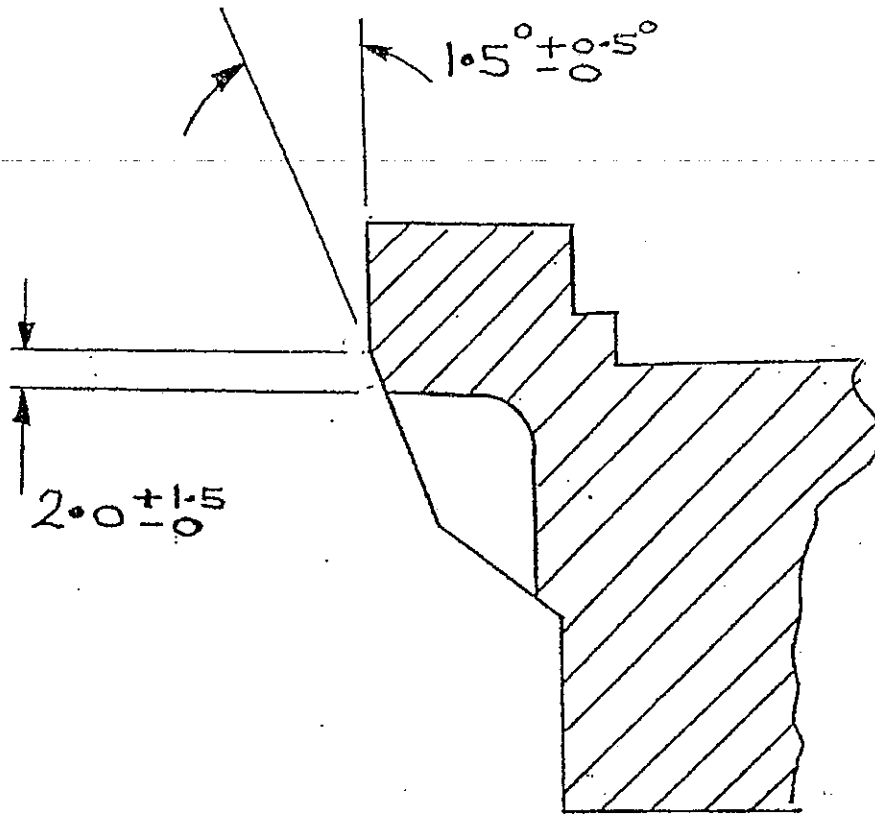


SECON MANUFACTURIER.

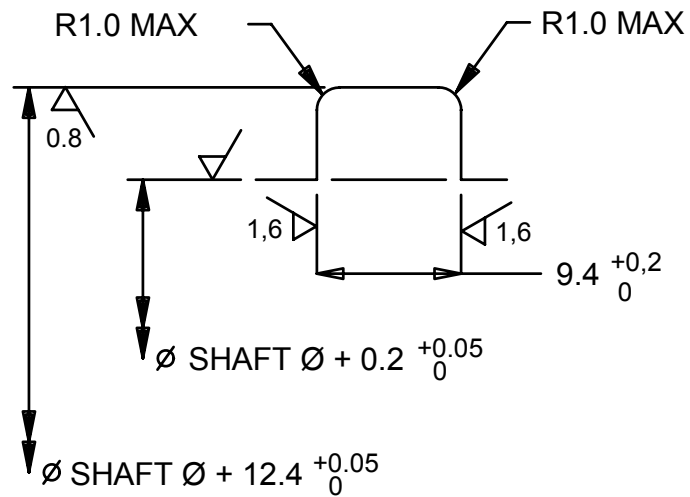
- MACHINER FACE SANS ANGLE AU DEBUT
- AVEC UN CRAYON PLOMB, MARQUER LA FACE (VERS INTERIEUR) ENTRE LES SCALLOPS.
- MACHINER ANGLE 12: POUR ENLEVER LES MARQUES DU CRAYON PLOMB



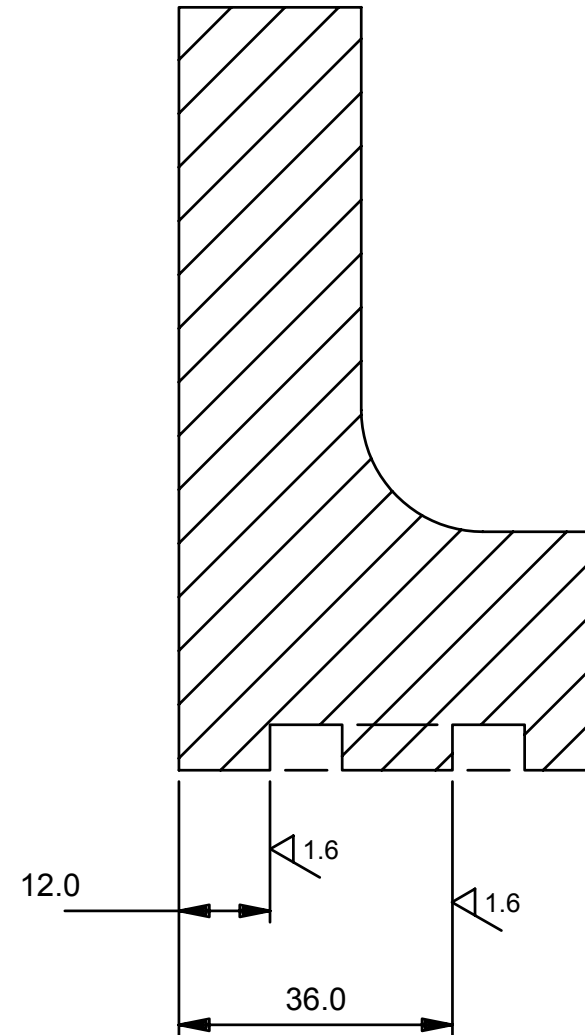
Attached please find m/c data for face inserts. When conducting this m/c face must not have any ovality present. After m/c ENSURE running face is parallel to Sealing Strip shoulder.

Surface finish to be achieved by fine m/c + Light burnish with 600 grit paper on block. M/c flat initially. Mark with pencil at scollops then m/c angle using marks as guide.

(all dimension in mm)



### "O" CORD GROOVE DETAIL



## SECTION Z-Z