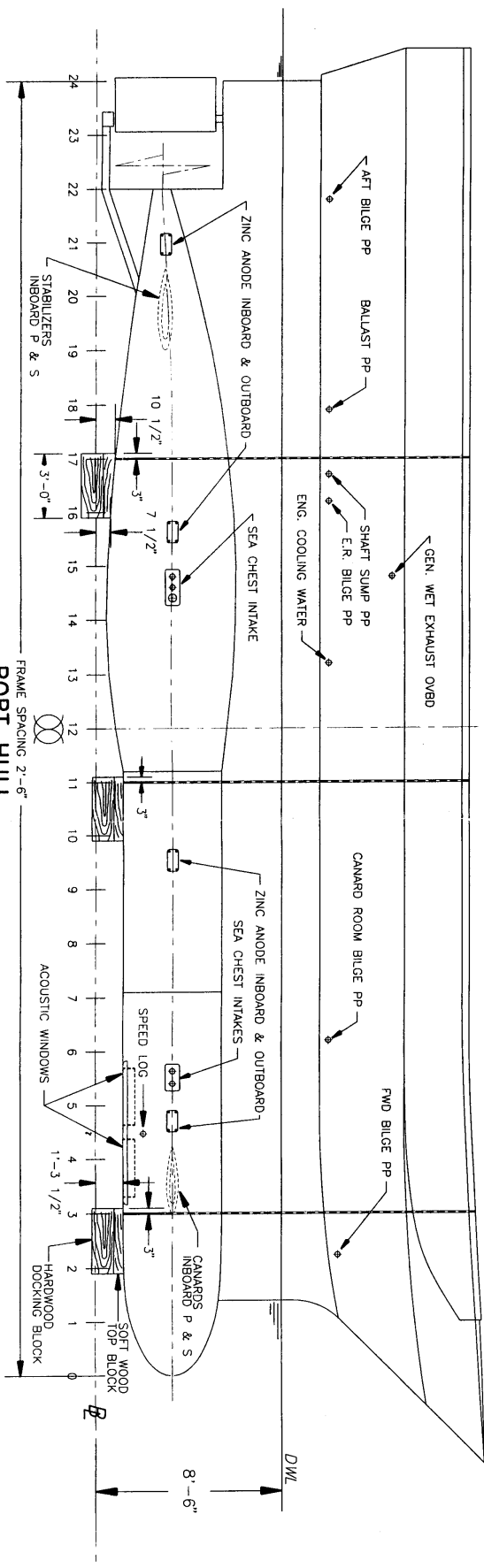


IMPORTANT NOTICE

TO PREVENT HULL DAMAGE, ALWAYS
USE SOFT WOOD TOP BLOCK OR
ANOTHER RESILIENT MATERIAL.

PRINCIPAL PARTICULARS

LENGTH OVERALL: 65'-7 1/2"
BREADTH: 35'-0"
DEPTH: 15'-7"
DESIGN DRAFT: 8'-6"
LIGHTSHIP WEIGHT: 60.8 L.Tons



C. TREMBLAY & ASSOCIATES INC.
CONSULTANTS MARITIMES
3157 DOUAI, STE-FOY, QUE., CANADA, G1W 2X3

TITRE:

FREDERICK G. CREED
DOCKING PLAN

FRAME SPACING 2'-6"
PORT HULL

DESIGN PAR:

L.T.
VERIFIE PAR:
C.T.

DATE:

96-02-18

PROJET NO:

176
PLAN NO:
176-DCK

ECHELLE:

3/16"=1'-0"
REVISION:
0

FILE:

2 / 2