

REFERENCES

NO.	DWG #	DESCRIPTION
1	F3756-117M649	TRAVAUX SUPPLÉMENTAIRES
2	F7100-TC	FLOOR DRAIN WITH SURFACE MEMBRANE CLAMP
3	F3756-117M604	SYSTÈME D'ÉNERGIE POUR CONGÉLATEUR

GENERAL NOTE:

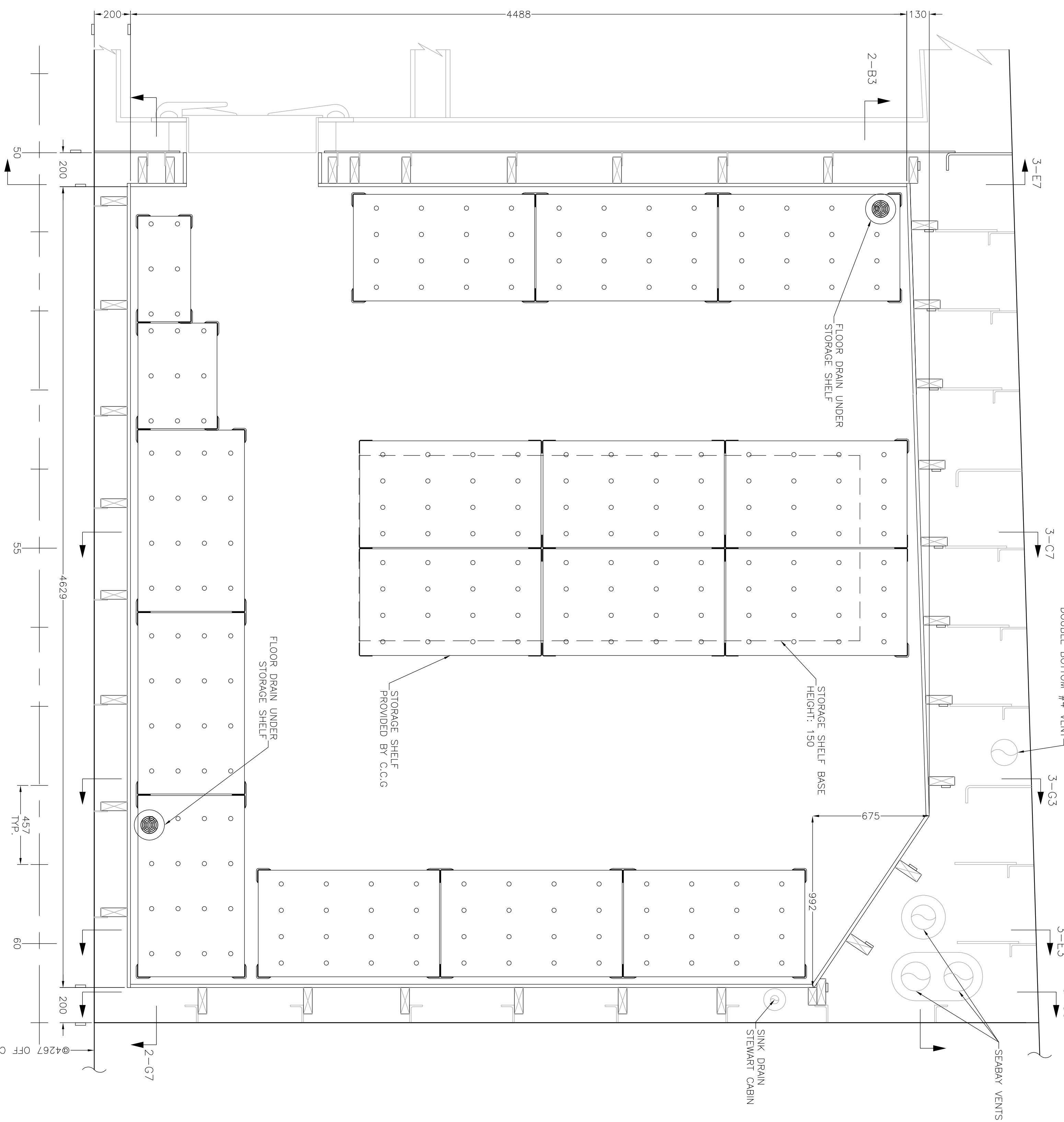
THIS DOCUMENT IS THE ENGLISH VERSION OF THE MAIN DRAWING C12-37-600-01-R1 – ISOLATION CONGÉLATEUR DOMESTIQUE.dwg. IF INFORMATION BETWEEN THE TWO DOCUMENTS DOES NOT FIT IN, THE DOCUMENT C12-37-600-01-R1 – ISOLATION CONGÉLATEUR DOMESTIQUE.dwg SHALL PREVAIL.

NOTES:

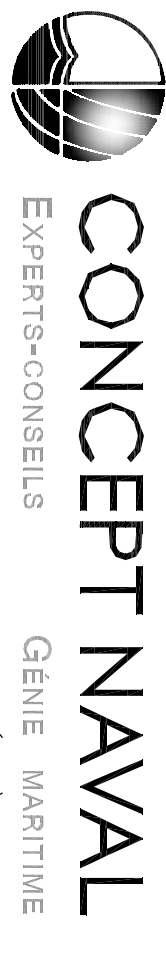
1. A POLYURETHANE SPRAY FOAM (AIRMETIC SOYA) MUST BE APPLIED BETWEEN THE SHIP STEEL STRUCTURE AND THE PLYWOOD. THE INSULATION MUST BE FREE OF ANY AIR POCKET BETWEEN THE SHIP STEEL STRUCTURE AND THE PLYWOOD.
2. THE SPRAY FOAM INSULATION MUST BE APPLIED BY A CONTRACTOR WHO HOLDS A VALID LICENSE PROGRAM QUALITY ASSURANCE OF CULFCA (Canadian Urethane Foam Contractors Inc.).
3. THE WALLS AND THE CEILING MUST BE COVERED BY A STAINLESS STEEL SHEETING GAUGE 20. FASTENED WITH BLIND RIVETS. ALL SHEET JOINTS MUST BE RIVETED AND GLUED WITH AN ADHESIVE SUITABLE FOR STAINLESS STEEL.
4. THE COLD ROOM FLOOR AND CENTRAL STORAGE SHELVES 'FORBO' BRAND WITH A WALL OVERLAP OF A MINIMUM OF 500mm WITHOUT ANY HORIZONTAL JOINT.
5. ALL VINYL FLOOR COVERING JOINTS MUST BE HEAT-WELDED AS PER MANUFACTURER RECOMMENDATIONS.
6. THE INSTALLATION OF THE VINYL FLOOR COVERING MUST BE DONE BY A CONTRACTOR CERTIFIED BY THE MANUFACTURER (FORBO).
7. IN THESE AREAS, SPECIAL ATTENTION SHOULD BE GIVEN TO THE FASTENING OF THE VINYL FLOOR COVERING TO PROTECT THE INTEGRITY OF THE BULKHEAD PENETRATIONS AND FACILITATE THE CONNECTION WITH REFRIGERATION EQUIPMENTS.
8. STORAGE SHELVES, REFRIGERATION AND LIGHTING EQUIPMENTS MUST BE SECURED PROPERLY TO AVOID MOVEMENT DURING THE SHIP'S OPERATIONS.
9. THE ORIGINAL LIGHTING SYSTEM IS TO BE INSTALLED IN THE COLD ROOM.
10. THE FLOOR STRUCTURE MUST BE GLUED AND SCREWED. THE FINAL INTERIOR DIMENSIONS OF THE ROOM DEPEND ON THE SELECTION OF THE MATERIAL AND THE ASSEMBLY PRECISION.
12. THE SECURING OF THE STORAGE SHELVES MUST BE DONE USING THE SCREWED BRACKETS PROVIDED BY THE C.C.G. SUBMITTED BY THE MANUFACTURER. THE BRACKETS ARE SUPPORTED BY HOLLOW LEGS IN PLACE OF THE BRACKETS SEE DETAIL 2-05 AND 3-06. THE HOLDERS ARE Laid ON THE FLOOR ONLY AND NOT SCREWED.
13. A LEVELING CONCRETE MUST BE APPLIED ON THE FLOOR BEFORE THE INSTALLATION OF THE VINYL FLOOR COVERING. THE LEVELING CONCRETE IS USED TO PROVIDE A SMOOTH AND EVEN SURFACE FOR THE INSTALLATION OF FLOOR COVERING AS SPECIFIED BY THE MANUFACTURER (FORBO).
14. ALL THE BOLTING ATTACHMENTS BETWEEN THE WOOD AND STEEL MUST CONSIST OF : BOLT, WASHER, LOCKWASHER AND A NUT.
15. ALL JUNCTION OF PLYWOOD MUST LINE UP WITH A WOOD SILL OR BEAM.
16. RUSSIAN PLYWOOD MUST BE SCREWED AT EVERY 300mm, WITH NO.8x2 SCREW FOR THE FLOOR AND WITH NO.8x1½" SCREW FOR THE WALLS AND CEILING.
17. THE OPERATING TEMPERATURE OF THE COLD ROOM IS -21°C.

LIST OF MATERIALS

MATERIAL	DESCRIPTION	AREA
VINYL FLOOR COVERING	FORBO, ETERNAL STRIP, 2mm THICKNESS, COLOR: TO BE DETERMINED BY THE C.C.G.	FLOOR AND WALL OVERLAP
VINYL FLOOR COVERING ADHESIVE	FORBO, ADHESIVE V885 FOR WOOD SURFACES, STEEL AND CONCRETE	FLOOR AND WALL OVERLAP
SUPPORTING STRIP	SUPPORTING STRIP, 'FORBO' STRIP	WALL OVERLAP
LEVELING CONCRETE	LEVELING CONCRETE, TYPE BONDEX NON SELF-LEVELING	FLOOR
PLYWOOD	18.0mm RUSSIAN PLYWOOD, THICKNESS: 18.0mm	WALLS AND CEILING
PLYWOOD	25.0mm RUSSIAN PLYWOOD, THICKNESS: 25.0mm	FLOOR
WOOD 51x176 (2"x3")	TREATED WOOD AGAINST MOLD, 51x176 (2"x3")	FLOOR, WALLS AND CEILING
WOOD 51x102 (2"x4")	TREATED WOOD AGAINST MOLD, 51x102 (2"x4")	WALLS AND CEILING
WOOD 51x152 (2"x6")	TREATED WOOD AGAINST MOLD, 51x152 (2"x6")	FLOOR, WALLS AND CEILING
STAINLESS STEEL SHEET GAUGE 20	316 STAINLESS STEEL SHEET GAUGE 20	CEILING, WALLS AND DOOR FRAME
STAINLESS STEEL SHEET GAUGE 16	316 STAINLESS STEEL SHEET GAUGE 16	DOOR SILL
BLIND RIVET	BLIND RIVET, Ø¾", STAINLESS STEEL	STAINLESS STEEL
STAINLESS STEEL ANGLE BAR 100x100x6.35 (4"x4"x¼")	316 STAINLESS STEEL ANGLE BAR 100x100x6.35 (4"x4"x¼")	STORAGE SHELF BASE
STAINLESS STEEL ANGLE BAR 64x64x6.35 (2½"x2½"x¼")	316 STAINLESS STEEL ANGLE BAR 64x64x6.35 (2½"x2½"x¼")	STORAGE SHELF LEGS
BOLT	HEXAGONAL BOLT #9.5x51, FULLY FILETED	WOOD/STEEL STRUCTURE
NUT	HEXAGONAL NUT FOR BOLT #9.5, STEEL GRADE 8, ZINC PLATED	WOOD/STEEL STRUCTURE
WASHER	WASHER FOR BOLT #9.5, STEEL GRADE 8, ZINC PLATED	WOOD/STEEL STRUCTURE
LOCK WASHER	LOCK WASHER FOR BOLT #9.5, STEEL GRADE 8, ZINC PLATED	WOOD/STEEL STRUCTURE
SCREW 2"	SCREW FOR TREATED WOOD, FLAT HEAD, NO.8, LENGTH: 2"	WOOD/STEEL STRUCTURE
SCREW 1½"	SCREW FOR TREATED WOOD, FLAT HEAD, NO.8, LENGTH: 1½"	WOOD STRUCTURE, WALLS AND CEILING
GLUE	CONSTRUCTION GLUE, TYPE SIKKA BOND	WOOD STRUCTURE AND STAINLESS STEEL SHEETS
STEEL PLATE 9.5mm	STEEL PLATE LLOYD'S GRADE 7½, 9.5mm THICKNESS	FLOOR DRAIN
FLOOR DRAIN	MF&B, MODEL: F1100-TC, Ø75mm, AT BODY.	FLOOR DRAIN
SPRAY FOAM INSULATION	POLYURETHANE SPRAY FOAM, AIRMETIC SOYA (DEMILEO)	WALLS, CEILING AND FLOOR INSULATION



COLD ROOM ARRANGEMENT
MAIN DECK
WOOD STRUCTURE AND OUTFITTING



GÉNIE MARITIME
25, rue du Marché Champlain, suite 101, Québec, (Qué.) G1K 4H2
Tél.: 418.692.1524 Courriel: email: info@conceptnaval.com

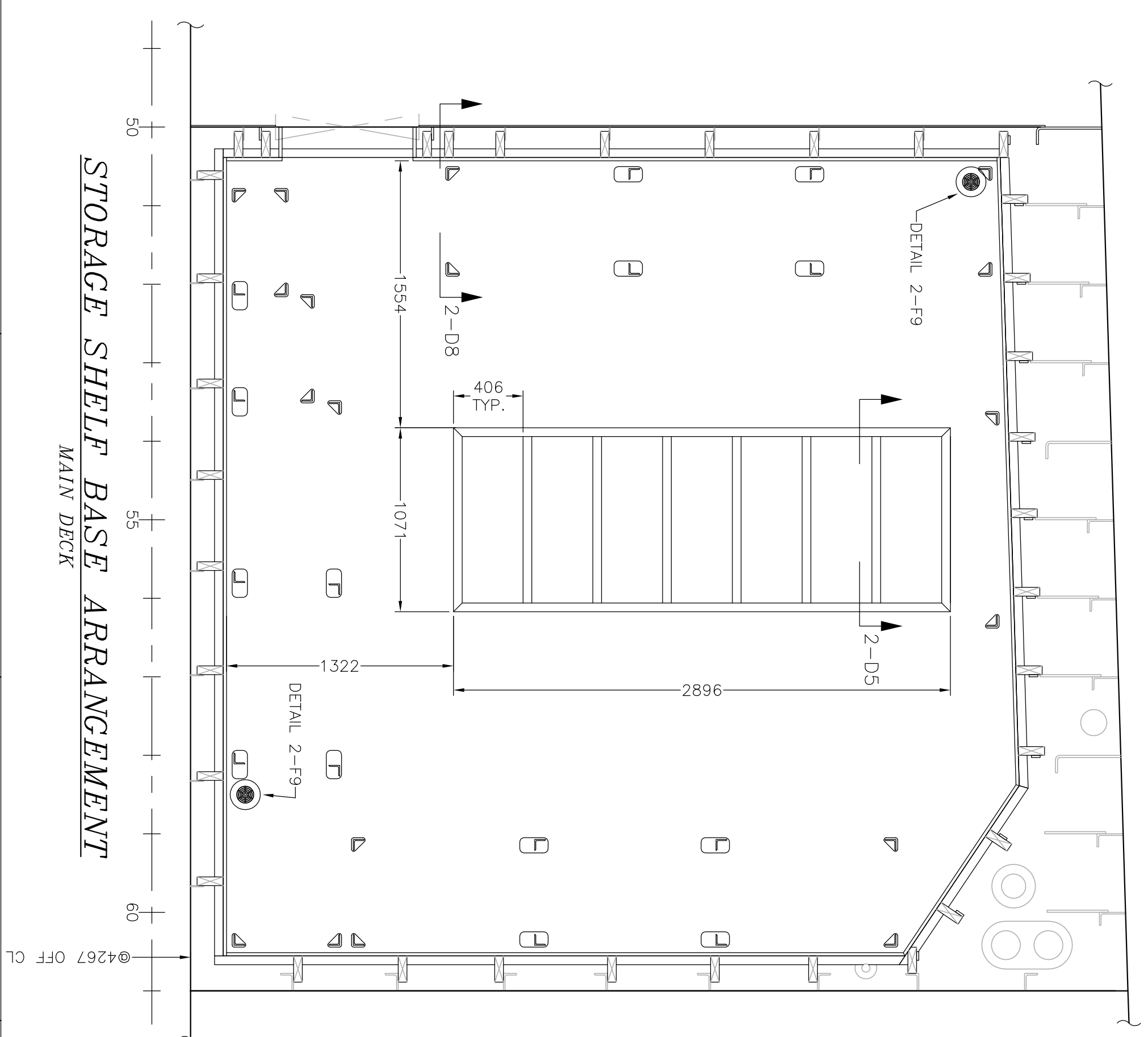
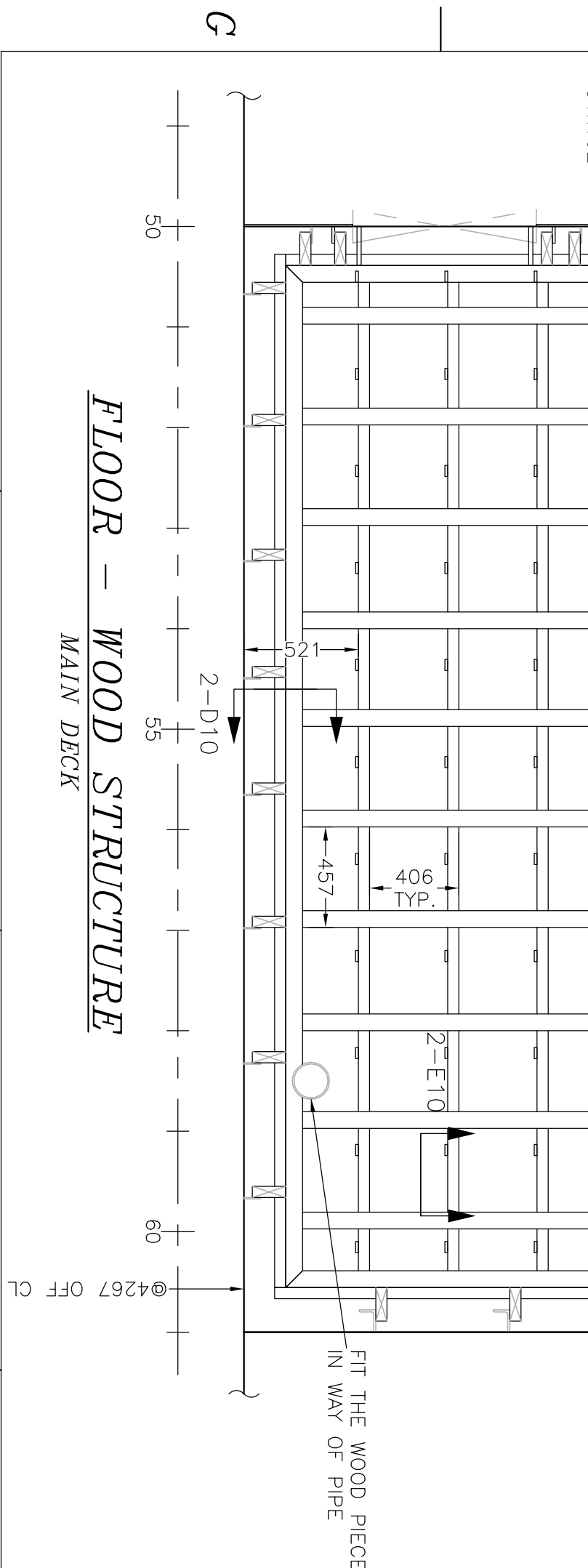
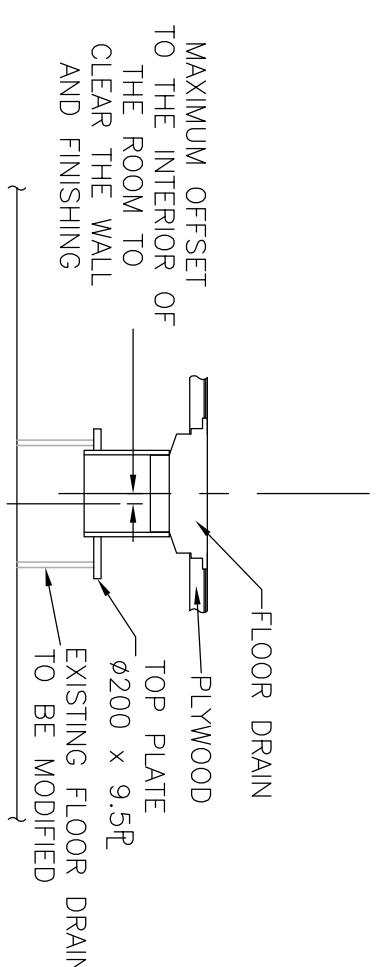
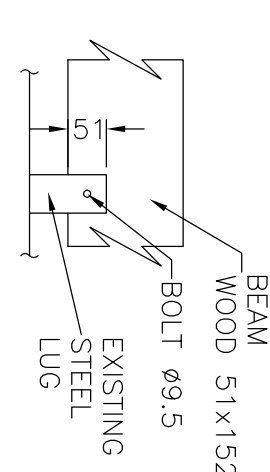
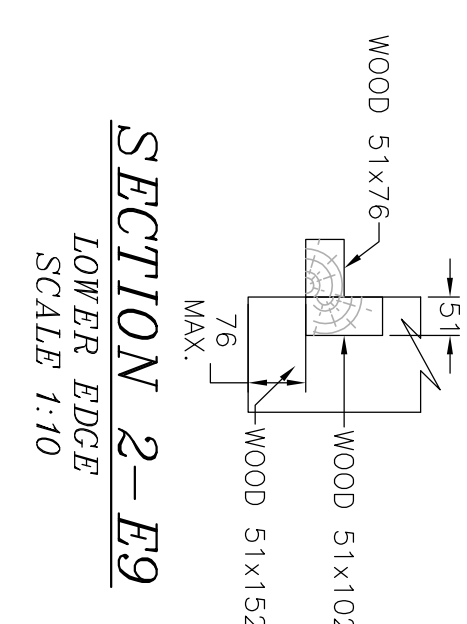
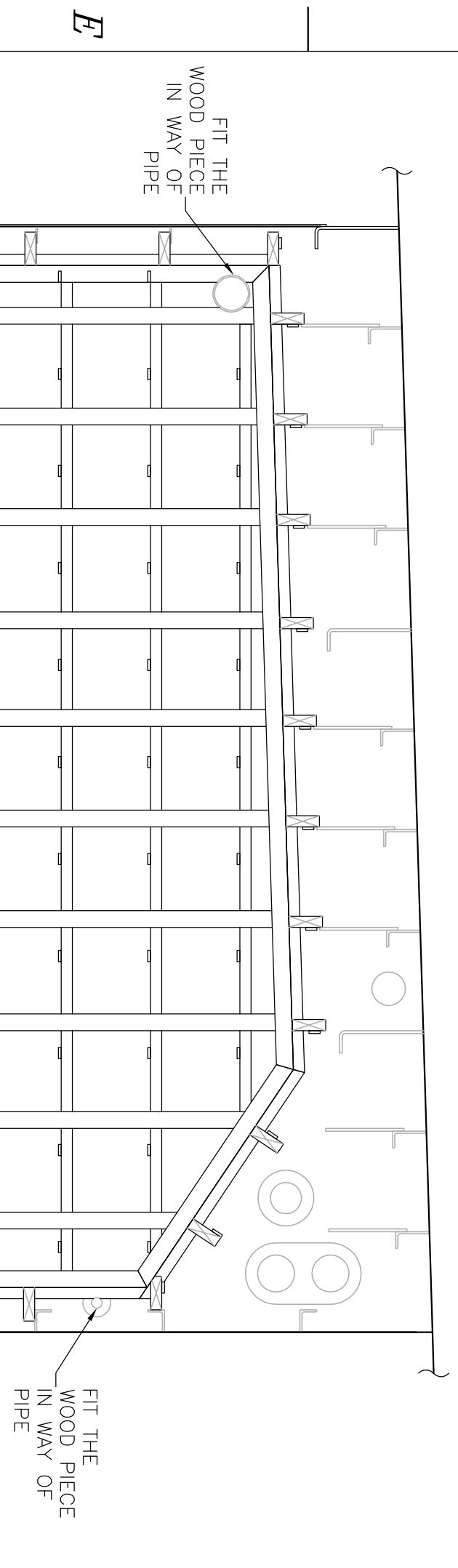
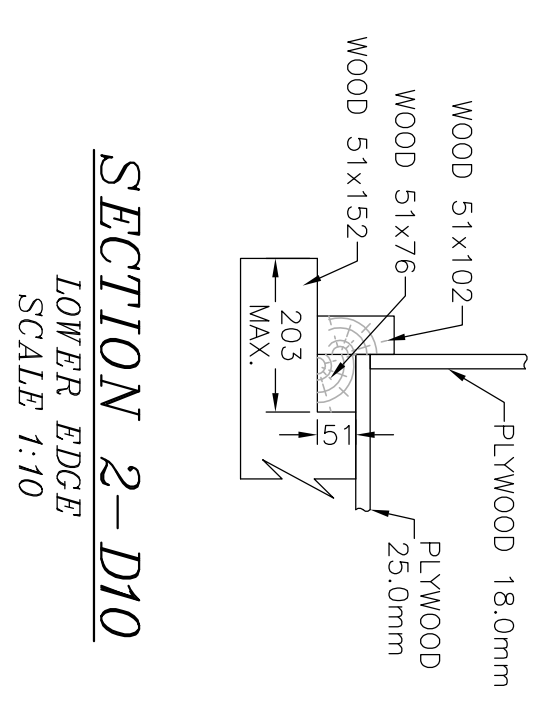
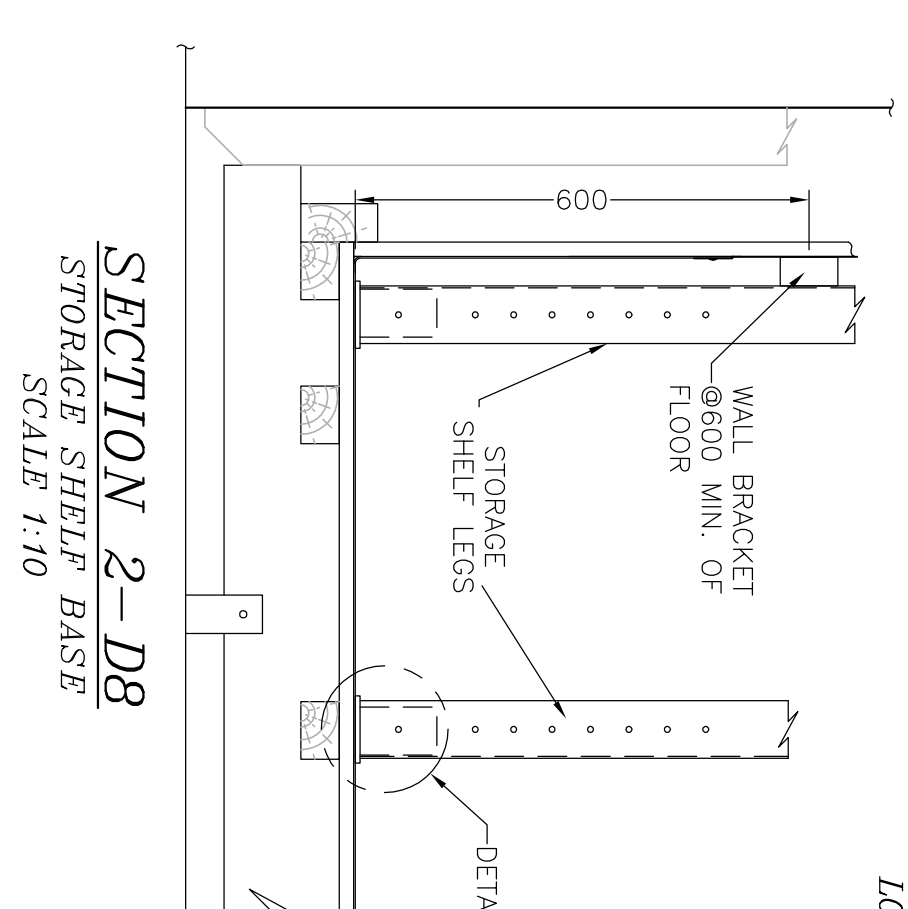
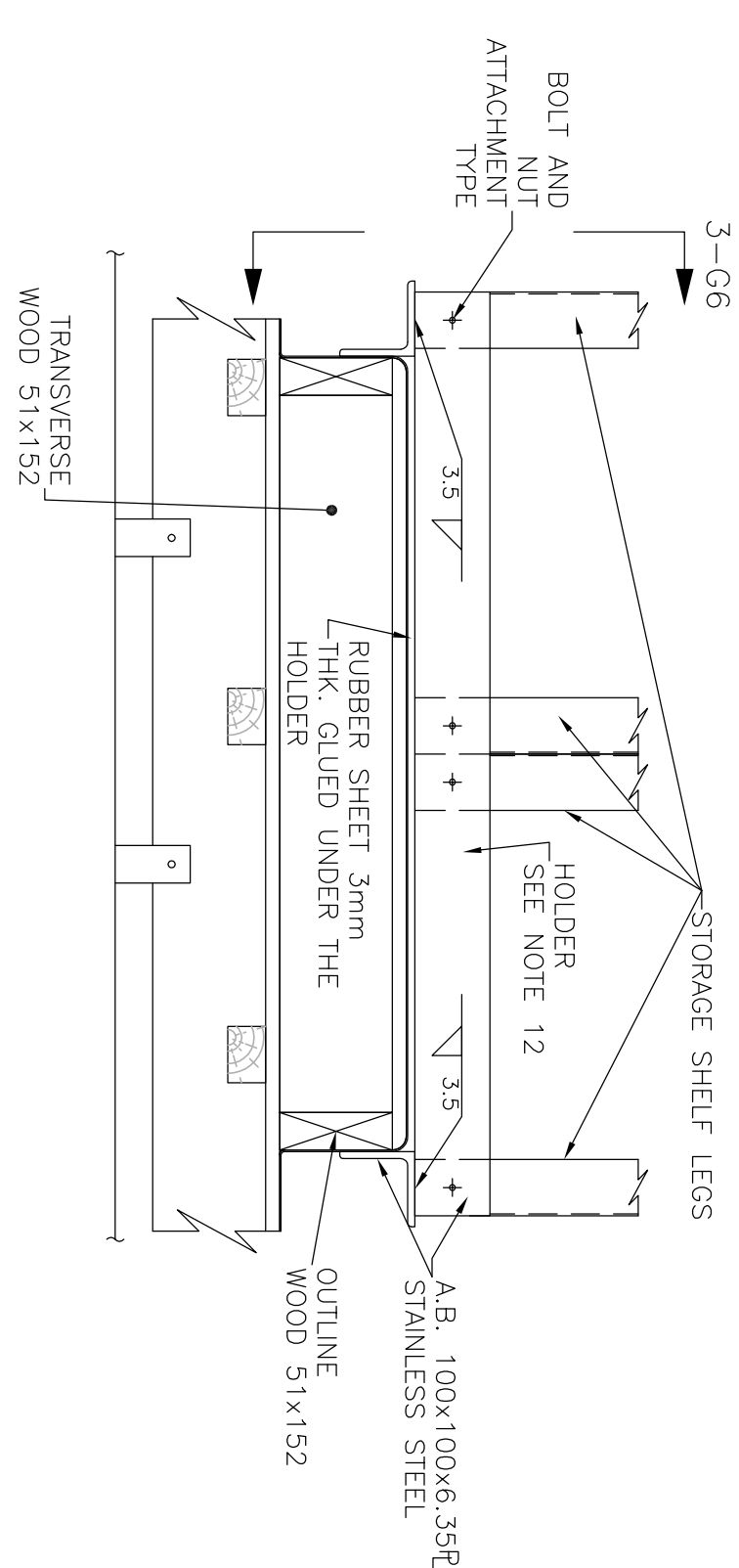
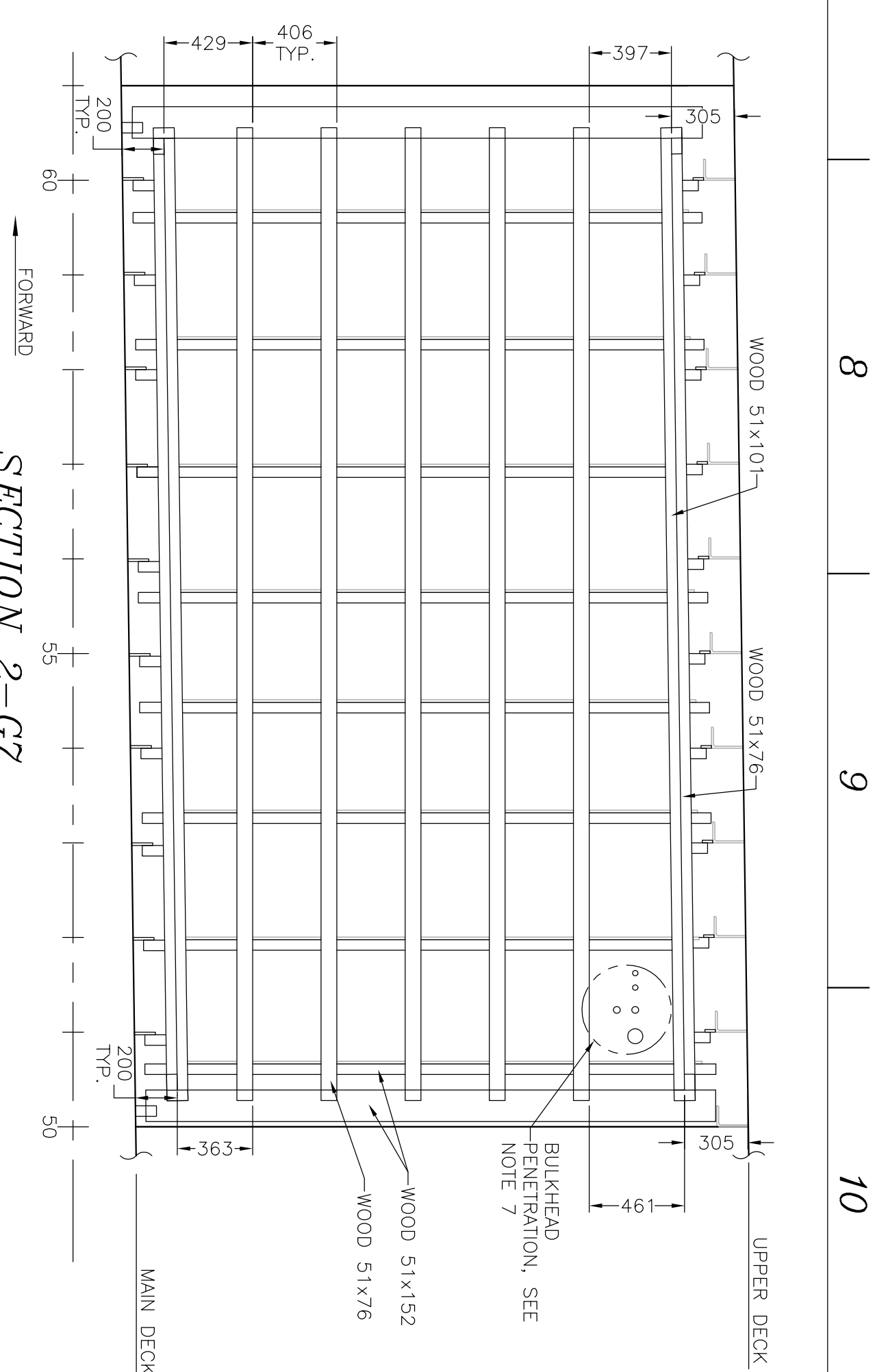
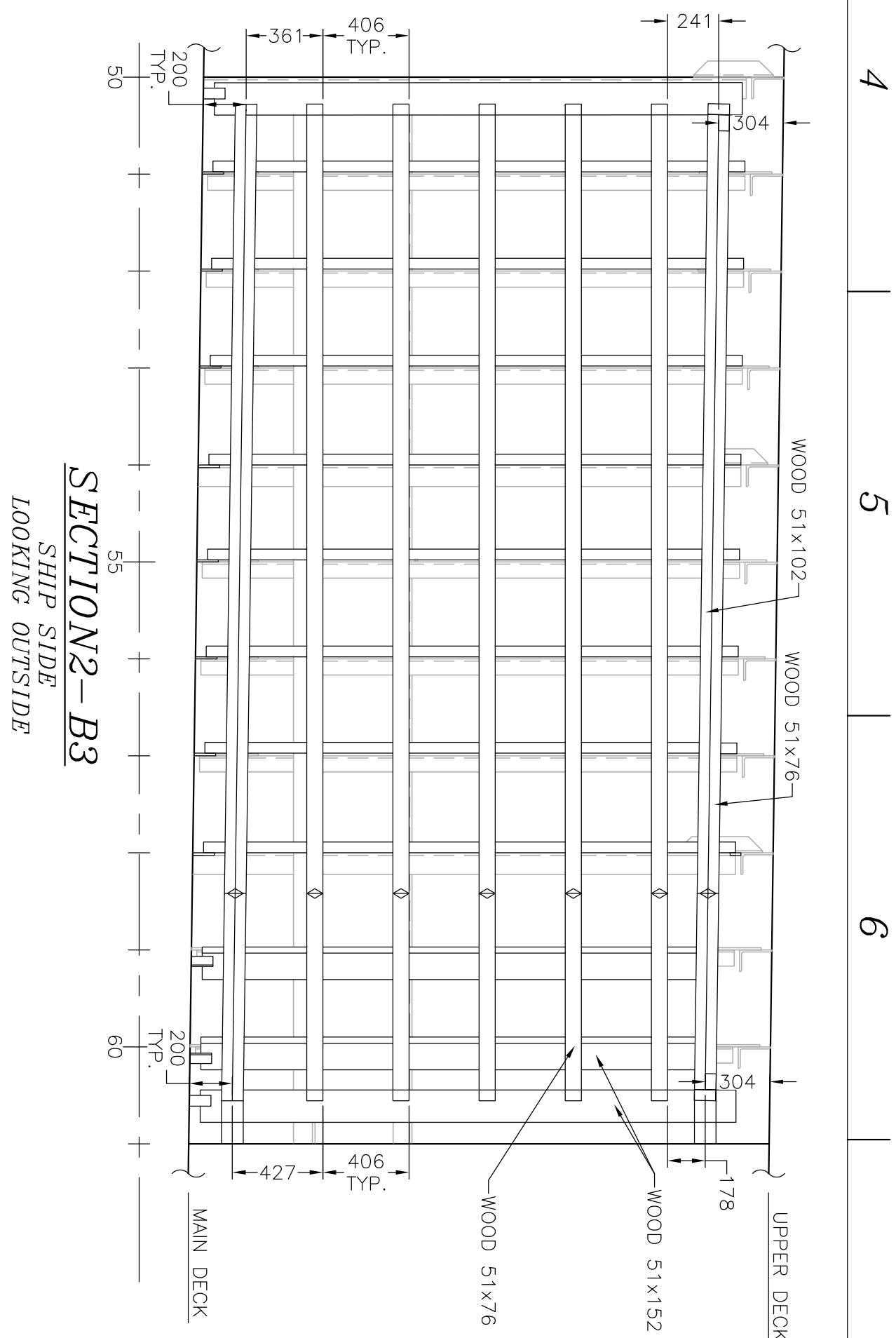
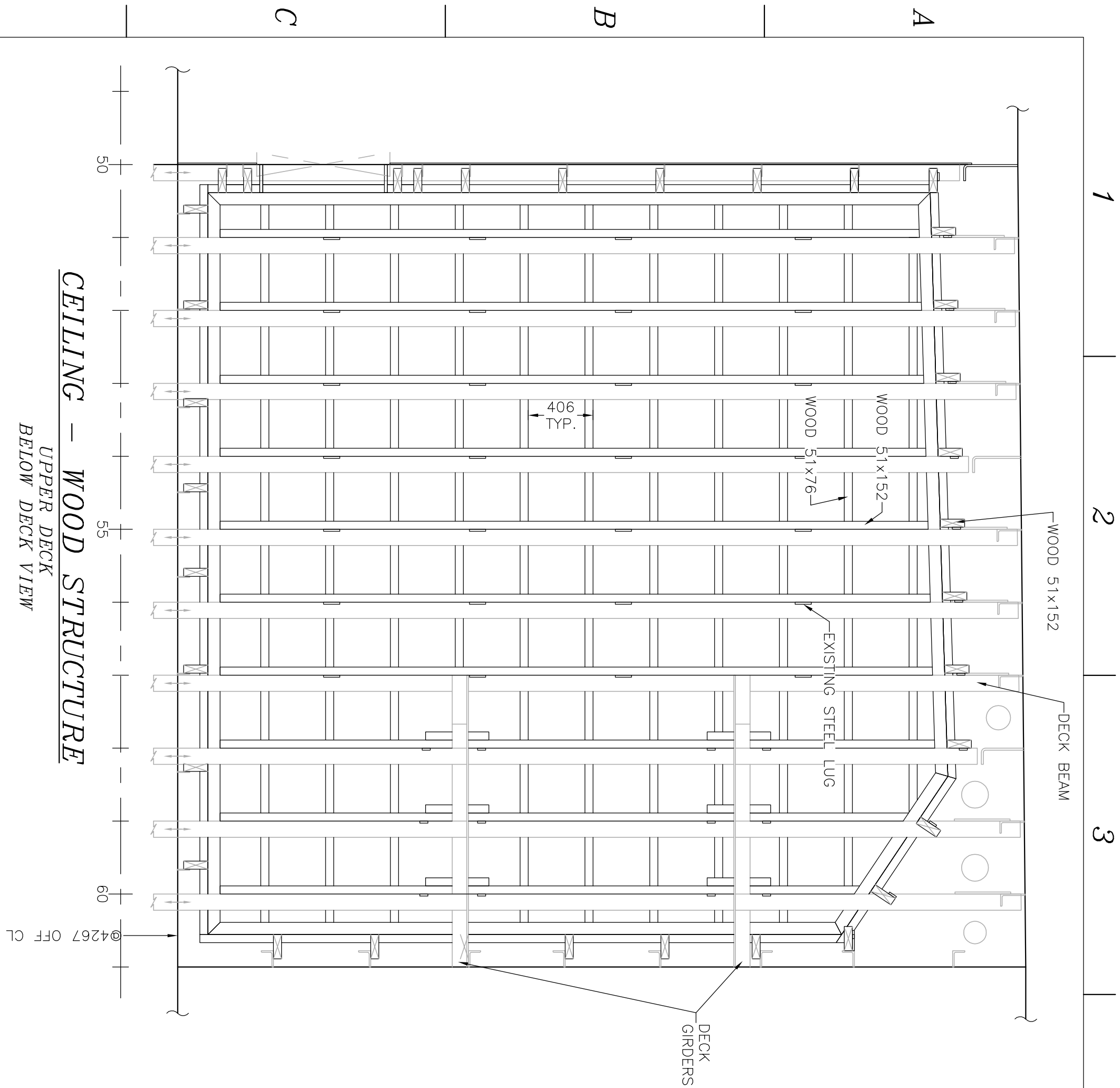
CLIENT: CANADIAN COAST GUARD

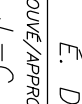
PROJET/PROJECT: CCGS AMUNDSEN

TITRE/TITLE: COLD ROOM INSULATION
INSTALLATION PLAN

DESIGN/DRAWN: J. BRINSON	DATE: JULY 24 2012	REVISION NO./DWG. NO. C12-37-600-02
CHECKED/REVISED: E. DUPLAN	DATE: JULY 24 2012	ÉCHELLE/SCALE: 1:15
APPROVED/APProuvé: J.-C. LAURIN	DATE: JULY 25 2012	FOLIOLE NO./SHEET NO. 1 OF 3

CE DOCUMENT EST LA PRÉSENTÉ UNIQUE DE CONCEPT NAVAL. Toute utilisation de ce dessin doit être autorisée par écrit par Concept Naval. Toute réimpression ou utilisation non autorisée sans la permission écrite de Concept Naval, est considérée comme illégale. Toute violation de ces droits sera poursuivie devant les tribunaux et les dommages-intérêts seront réclamés.





CONCEPT NAVAL

EXPERTS-CONSEILS

GÉNIE MARITIME

25, rue du Marché Champlain, suite 101, Québec, (Qué.) G1K 4H2
Tél: 418.692.1524
Courriel: info@conceptnaval.com

CLIENT:

PROJET/PROJET:

TITRE/TITLE:

COLD ROOM INSTALLATION

CANADIAN COAST GUARD

CCGS AMUNDSEN

DESIGN/DRAWN:

J. BRISON

VERIF/CHECKED:

E. DUPLIN

APPROV/APPROVED:

J.-C. LAURIN

DATE:	DESIGN NO./ONG. N°:
JULY 24 2012	C13-87-600-02
DATE:	ÉCHÉLÉ/SCALE:
JULY 24 2012	1:25
DATE:	REVISION:
JULY 25 2012	0
FEUILLE NO./SHEET N°:	
2 OF 3	

CONCEPT EST LA PROPRIÉTÉ INTELLECTUELLE DE CONCEPT NAVAL. TOUTE UTILISATION DE CONCEPT NAVAL, SANS LE CONSENTEMENT PRÉALABLE DE CONCEPT NAVAL, EST INTERDITE.

CONCEPT NAVAL EST LA PROPRIÉTÉ INTELLECTUELLE DE CONCEPT NAVAL. TOUTE UTILISATION DE CONCEPT NAVAL, SANS LE CONSENTEMENT PRÉALABLE DE CONCEPT NAVAL, EST INTERDITE.

