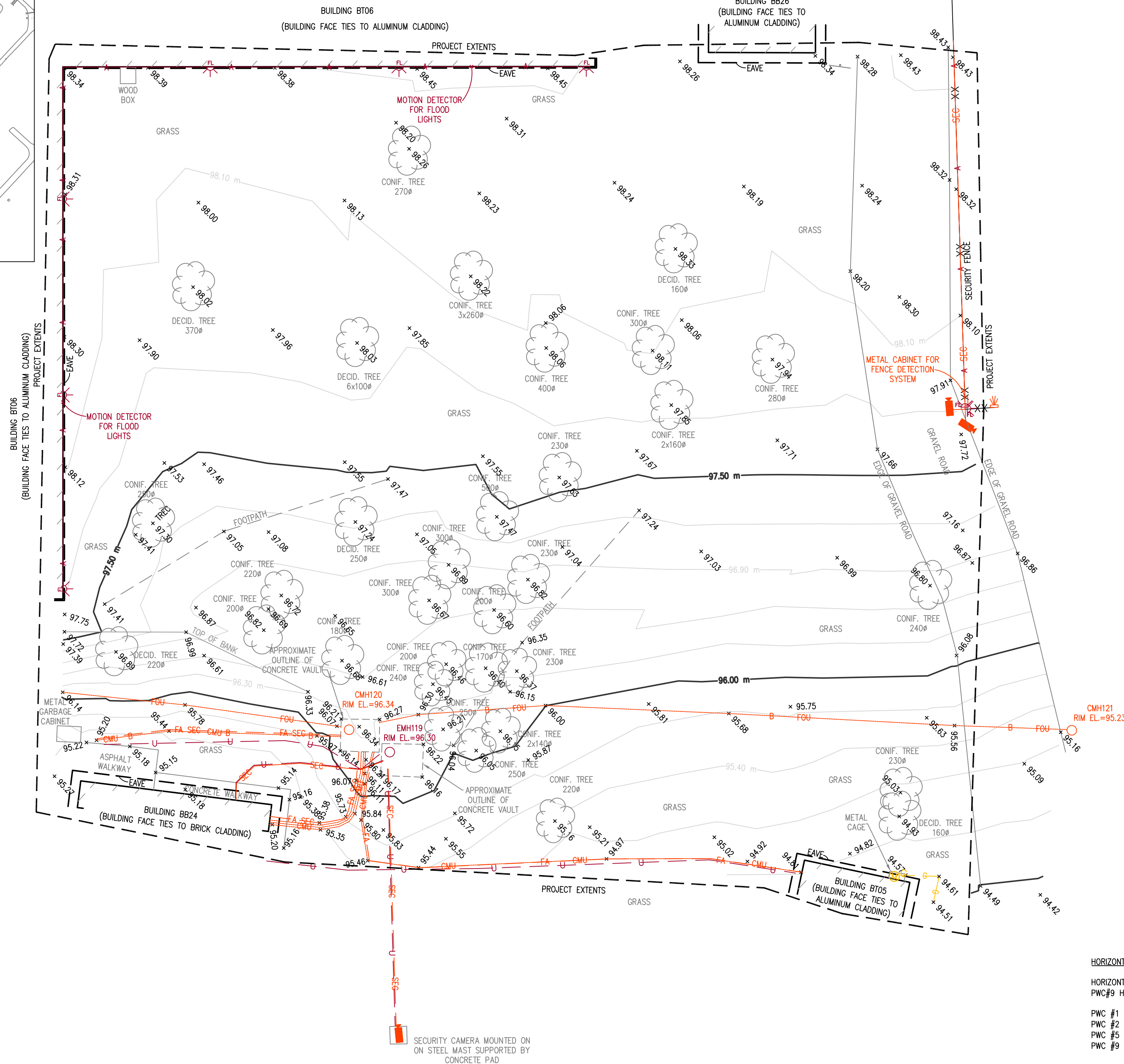
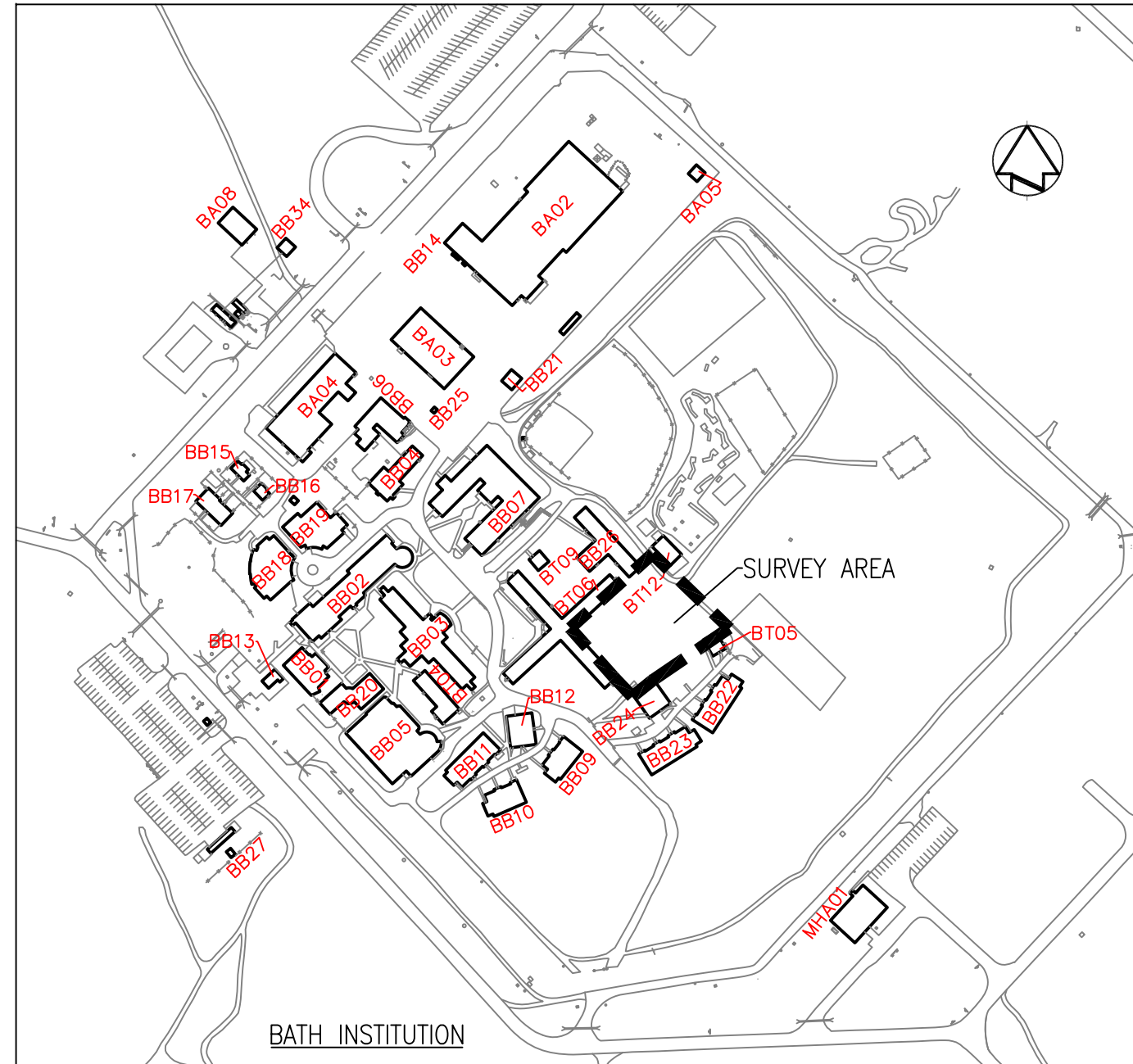


MAP KEY - NOT TO SCALE



HORIZONTAL CONTROL

HORIZONTAL POSITIONING IS BASED ON TIES TO PWSC CONTROL MONUMENTS PWC#1, PWC#2, PWC#5 AND PWC#9 HAVING COORDINATES AS LISTED BELOW:

PWC #1 N=4894478.534 E=360159.060
PWC #2 N=4894396.849 E=359869.006
PWC #5 N=4894680.874 E=359593.008
PWC #9 N=4895101.828 E=359931.425

DATUM: NAD83
U.T.M. Z18

VERTICAL CONTROL

ALL ELEVATIONS SHOWN ON PLAN ARE GEODETIC AND ARE REFERENCED TO PWC #1 HAVING AN ELEVATION OF 91.041m. ELEVATIONS ARE BASED ON CGD28 (CANADIAN GEODETIC DATUM OF 1928).

NOTES

- THIS SURVEY WAS CARRIED OUT ON MAY 15 AND MAY 29, 2012.
- FOR MORE DETAILS REFER TO COMPREHENSIVE SURVEY REPORT.
- THE UNDERLYING DATASET IS CURRENT TO MAY 11, 2012.
- CONTOUR INTERVAL = 0.3 m.
- UNDERGROUND UTILITY LOCATES CARRIED OUT BY LOVELAND UTILITY LOCATES AND CONSULTANTS

Revisions Date

SURVEYOR'S CERTIFICATE

I CERTIFY THAT THIS DRAWING ACCURATELY REPRESENTS THE FIELD SURVEY COMPLETED MAY 29, 2012 AND IS CORRECT.

MAY 29, 2012
DATE
KEVIN R.D. SMITH, BSc. Eng., C.L.S.

LEGEND

x 91.86	SPOT ELEVATION
-91.70m-	INDEX CONTOUR
[Building Footprint]	FACE OF BUILDING
[Building Eave Outline]	BUILDING EAVE OUTLINE
XX	SECURITY FENCE
[CCTV Camera]	CCTV CAMERA
[Fence Detector]	FENCE DETECTOR
FA-SEG	FIRE ALARM & SECURITY U/G
SEC	SECURITY ABOVE GROUND
B	BELL U/G/ CABLE
CMU	COMMUNICATION U/G
CMH	VOICE/DATA CABLE
FOU	COMMUNICATIONS MANHOLE
FOU	FIBRE OPTICS U/G
U	DUCT C/W CABLE
U	ELECTRICAL U/G
U	ELECTRICAL ABOVE GROUND
EMH	ELECTRICAL MANHOLE
[Flood Light]	FLOOD LIGHT
G	GAS METER
G	GAS LINE

A	Detail No.
B	No. du detail
C	drawing no. - where detail required
	dessin no. - ou detail exigé
	drawing no. - where detailed
	dessin no. - ou détaillé

project title
titre du projet

BATH ONTARIO

Correctional Services Canada
Millhaven/Bath Institutions
Hwy. #33, Bath

SITE SURVEY

drawing title
titre du dessin

TOPOGRAPHIC SITE SURVEY WITH UNDERGROUND SERVICE LOCATES AND DATA VALIDATION FOR PROPOSED G1 BUILDING AT BATH INSTITUTION

designed by Ronald H. Smith Ltd.
conc par Surveying, Mapping and Land Use Planning

drawn by Kevin R.D. Smith, BSc. Eng., C.L.S.
dessine par

reviewed by Kevin R.D. Smith, BSc. Eng., C.L.S.
examine par

approved by GARY W. PHILLIPS, O.L.S.
approuve par

project date 2012-05-15
date du projet

project no. R.056399.001
no. du projet

drawing no. 423
dessine no. (RHS# 12-029-1)