



INDEX

No.: 8

DD.:

Fual O.I booster Pump.

Client no. .534236K1/534636K1.....
Pump no .--.....
SPN no .00345013.....
Costumer .SWD./SPC.....

PUMP

Pumptype	TFL 6/80.....	r.p.m.	880.....
Capacity	6M ³ /h.....	Man. head.	3,25.bar...m.
Impeller diam.	--.....	Specific grf.	--.....
NPSH	..--.....	Visc.	10 ⁰ CS.....

DRIVER

Make:	Leroy. Somer.....	Type	LS132S F265.....
HP/KW	2,2.....	r.p.m.880.....

DOCUMENTATION

Curve	.00345013.....		
Dimension print	.00345013.....	IEC.132S
Sectional drw.	1-00.06.1.0708.		
Parts list	.00345013.....		
Maintenance	.Steimel /09.01.....		

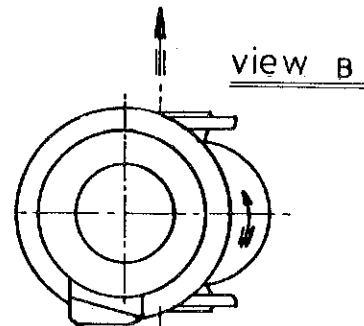
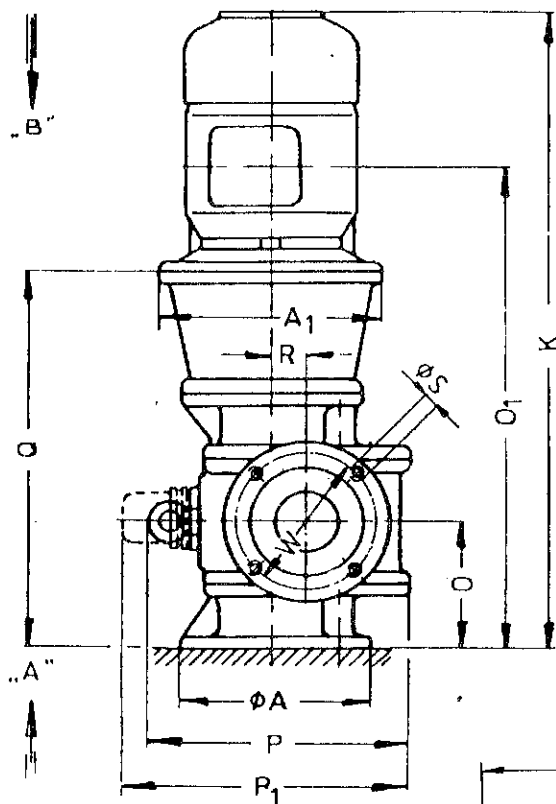


DD/00.345.013/021
dd.: 7-10-1982

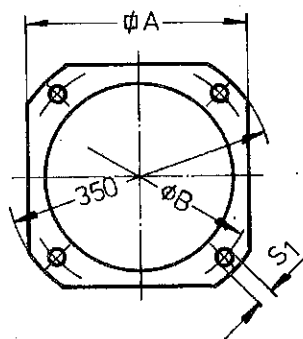
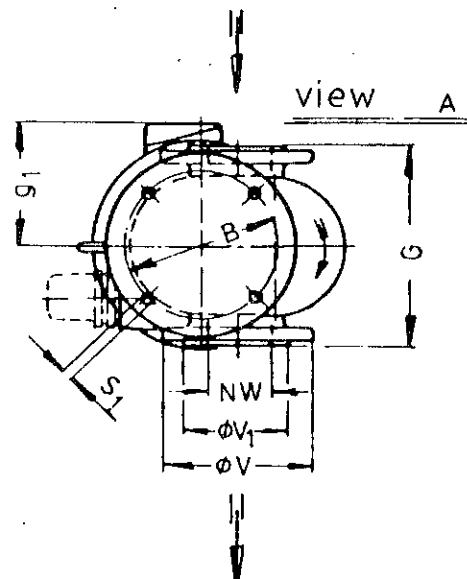
Order no.: SPN 00.345.013 / 021
Indents : 534236K1/534636K1

Design = TFL 6-80 DG LMS

Fuel oil booster pumps



Flange drilled to ANSI R 2"



P_Type	M_Type	M_Power	A	A1	B	G	K	O	O1	Q	P	P1	R	φ S
6_80	132 S	2,2 kW	300	300	300	200	797	130	595	436	262	300	32,5	4xM16

S1	φ V	φ V1	W	NW	g1
18	165	92,1	120,6	50	174

MOTOR : 2,2 kW
n : 880 min⁻¹
U : 440 VΔ
LS 132 SF 265



Pumptype: TFL6/80GDLMS

Steimel/ 07.345013

345021

pos.	Description	Drawing	Material	Number
0-1	Housing	1-00.06.2196-1	Cast iron	1
0-2	Drive cover	2-00.06.2539	Cast iron	1
0-3	Counter cover	1-00.06.2514	Cast iron	1
0-5	Cover cap	4-00.06.2210	Cast iron	1
0-7	Bushing screw	4-00.06.2209	Cast iron	1
0-8	Reception cover	4-00.06.2533	Steel alloy	1
1-1	Drive shaft	3-00.05.1766-1	Steel alloy	1
1-2	Couter shaft	4-00.05.1769-1	Steel alloy	1
1-3	Gear wheels	3-00.05.1912	Steel alloy	1 pair
1-4	Conical valve	4-00.06.2208	Steel alloy	1
2-2	Bearing bush	MB 2525 DU	----	3
2-3	Bearing bush	MB 3520 DU	----	1
3-1	Mech. seal	M2/35+V+R o.L	----	1
3-2	O-ring	ø 57x 2	Perbunan	2
3-3	Gasket34-40-2	DIN 7603	Copper/Asb.	2
3-4	Gasket14-18-2	DIN 7603	Copper/Asb.	4
3-5	Gasket	4-00.06.2184	It 200	1
4-1	Key	8x7x50 DIN6885	Steel	2
4-2	Key	10x8x65 DIN 6885	Steel	1
4-3	Stud	M10x25 DIN 939	Steel 8.8	20
4-4	Nuts	M10 DIN 934	Steel 8	20
4-5	Serrated washer	DIN 6798 ø 10,5	Spr. steel	20
4-6	Clamping sleeve	Din 1481 ø 6x35	Spr. steel	4
4-7	Plug	DIN 908 R1"	Steel 5.6	2
4-8	Expander	MB 800-070 ø7	Steel	2
4-9	Alanbolts	M6x15 DIN912	Steel	4
4-11	Spring	D-357 1-4 bar	Spring steel	1
4-12	Nut	4-00.06.2504	Steel	1
4-13	Adjusting ring	DIN705 A35	Steel	1
4-14	Grug screw	M6x10 DIN 553	Steel	1
4-15	Plug	DIN 908 R1"	Steel	4

