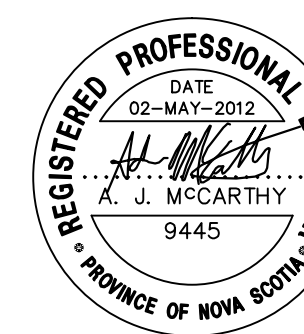


LEGEND

- POLE OR BOLLARD
- ⊙ LIGHT STANDARD
- ⊕ FIRE HYDRANT
- ⊠ CATCH BASIN
- MANHOLE
- ⊔ CULVERT
- △ SURVEY CONTROL



2	REVISED FOR ADDENDUM	MAY 2012
1	ISSUED FOR TENDER	MAR 2012
revisions		date

project **4 BED
SLE EXPANSION**
NOVA INSTITUTION FOR WOMEN
TRURO, NS

drawing **SERVICING PLAN
& PROFILE** design

designed A. McCARTHY conçu
date MAY 2, 2012
drawn A. McCARTHY dessiné
date MAY 2, 2012
approved A. McCARTHY approuvé
date MAY 2, 2012
Tender Soumission

PWSC Project Manager Administrateur de projets TPSCC
project number no. du projet
R.043928.004
drawing no. no. du dessin

C-1

SERVICING PLAN

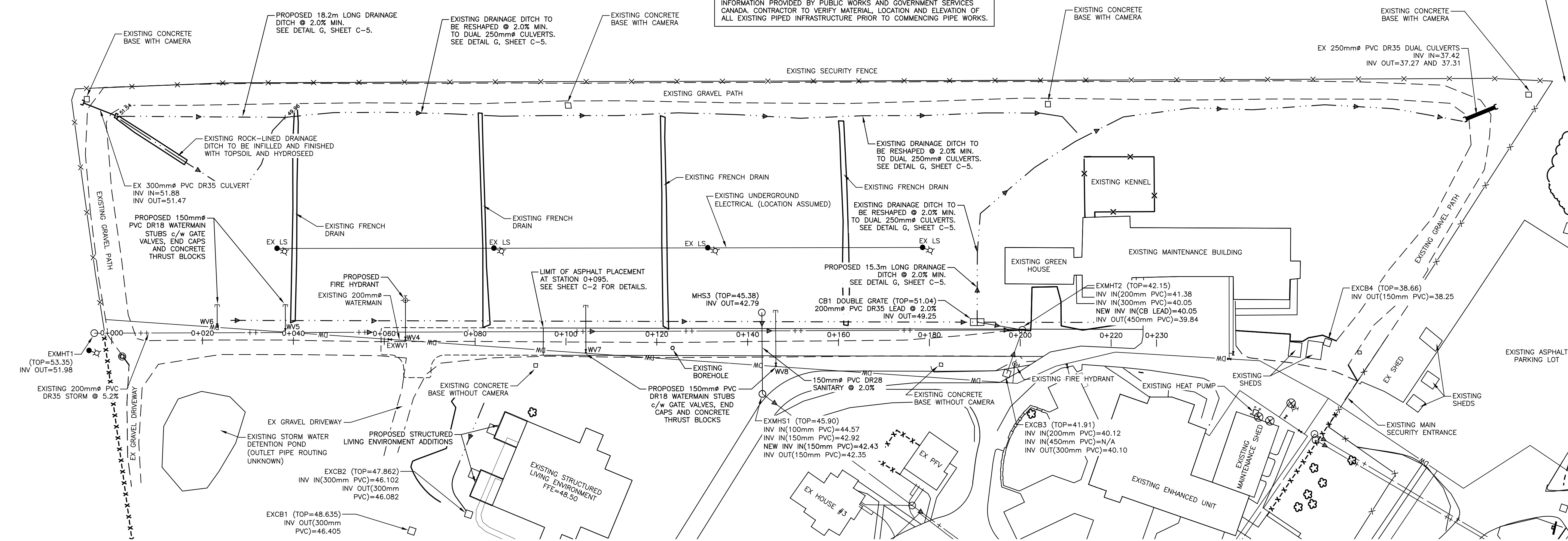
SCALE = 1:500



NOTE:
SURVEY DATA WAS FIXED TO NSCM (HPN) 9602, NORTHING =
5,021,116.495; EASTING = 476,239.649 (UTM ZONE 20 NAD
83(ORIGINAL)), HAVING A GEODETIC ELEVATION OF 70.695. CONTRACTOR
TO CONTACT GENVAR FOR LAYOUT INFORMATION PRIOR TO CONSTRUCTION.

NOTE:
EXISTING SITE INFRASTRUCTURE IS TAKEN FROM A COMBINATION OF
AS-BUILT TOPOGRAPHICAL SURVEY INFORMATION AND DESIGN AND RECORD
INFORMATION PROVIDED BY PUBLIC WORKS AND GOVERNMENT SERVICES
CANADA. CONTRACTOR TO VERIFY MATERIAL, LOCATION AND ELEVATION OF
ALL EXISTING PIPED INFRASTRUCTURE PRIOR TO COMMENCING PIPE WORKS.

NOTE:
CONTRACTOR TO INSTALL NEW CATCH BASIN WITH PYRAMID GRATE IN THE LOWEST POINT OF THE TREATED AREA
BEHIND THE SIDEWALK ON JAMES STREET. CATCH BASIN TOP ELEVATION TO BE 100mm BELOW ELEVATION OF TOP
OF EXISTING SIDEWALK. INSTALL 200mm PVC DR35 CATCH BASIN LEAD AND CONNECT TO 300mm CONCRETE
STORM MAIN WITH A 1050mm MANHOLE. MANHOLE TO BE LOCATED IN THE JAMES STREET CURB LINE. CONTRACTOR
TO VERIFY FIELD LOCATION FOR NEW CATCH BASIN WITH DEPARTMENTAL REPRESENTATIVE PRIOR TO PLACEMENT.



SCALE: 1:500
0m 10m 20m 30m 40m 50m

DRIVEWAY PROFILE

SCALE = 1:500 HORZ.; 1:50 VERT.

