

**RETURN BIDS TO:**  
**RETOURNER LES SOUMISSIONS À:**  
Travaux publics et Services gouvernementaux  
Canada  
Place Bonaventure, portail Sud-Est  
800, rue de La Gauchetière Ouest  
7<sup>ème</sup> étage  
Montréal  
Québec  
H5A 1L6  
FAX pour soumissions: (514) 496-3822

**Revision to a Request for a Standing Offer**

**Révision à une demande d'offre à commandes**

Regional Individual Standing Offer (RISO)

Offre à commandes individuelle régionale (OCIR)

The referenced document is hereby revised; unless otherwise indicated, all other terms and conditions of the Offer remain the same.

Ce document est par la présente révisé; sauf indication contraire, les modalités de l'offre demeurent les mêmes.

**Comments - Commentaires**

**Vendor/Firm Name and Address**

Raison sociale et adresse du  
fournisseur/de l'entrepreneur

**Issuing Office - Bureau de distribution**

Travaux publics et Services gouvernementaux Canada  
Place Bonaventure, portail Sud-Est  
800, rue de La Gauchetière Ouest  
7<sup>ème</sup> étage  
Montréal  
Québec  
H5A 1L6

<b>Title - Sujet</b> Cartes Magnétiques HID		
<b>Solicitation No. - N° de l'invitation</b> W3380-11J049/A		<b>Date</b> 2012-04-16
<b>Client Reference No. - N° de référence du client</b> W3380-11-J049		<b>Amendment No. - N° modif.</b> 001
<b>File No. - N° de dossier</b> MTA-1-34394 (375)	<b>CCC No./N° CCC - FMS No./N° VME</b>	
<b>GETS Reference No. - N° de référence de SEAG</b> PW-\$MTA-375-11994		
<b>Date of Original Request for Standing Offer</b> Date de la demande de l'offre à commandes originale		2012-03-15
<b>Solicitation Closes - L'invitation prend fin</b> <b>at - à 02:00 PM</b> <b>on - le 2012-04-25</b>		<b>Time Zone</b> <b>Fuseau horaire</b> Heure Avancée de l'Est HAE
<b>Address Enquiries to: - Adresser toutes questions à:</b> Joseph, Marc		<b>Buyer Id - Id de l'acheteur</b> mta375
<b>Telephone No. - N° de téléphone</b> (514) 496-3666 ( )		<b>FAX No. - N° de FAX</b> (514) 496-3822
<b>Delivery Required - Livraison exigée</b>		
<b>Destination - of Goods, Services, and Construction:</b> <b>Destination - des biens, services et construction:</b>		
<b>Security - Sécurité</b> This revision does not change the security requirements of the Offer. Cette révision ne change pas les besoins en matière de sécurité de la présente offre.		

**Instructions: See Herein**

**Instructions: Voir aux présentes**

<b>Acknowledgement copy required</b> <b>Accusé de réception requis</b>	<b>Yes - Oui</b> <input type="checkbox"/>	<b>No - Non</b> <input type="checkbox"/>
<b>The Offeror hereby acknowledges this revision to its Offer.</b> <b>Le proposant constate, par la présente, cette révision à son offre.</b>		
<b>Signature</b>	<b>Date</b>	
Name and title of person authorized to sign on behalf of offeror. (type or print) Nom et titre de la personne autorisée à signer au nom du proposant. (taper ou écrire en caractères d'imprimerie)		
<b>For the Minister - Pour le Ministre</b>		

**AMENDMENT 001**

The purpose of this amendment is to answer questions raised by potential bidders. The bidders should take into account this changes in the preparation of their bids.

**Question 1)**

- a. Will you provide the numbering system you wish to use, or shall the vendors supply one of their choosing?
- b. Will this numbering system be printed on the outside of each card, electronically programmed on the card, or a combination of both? If electronic, is there a specific format?
- c. We would like to also ask about minimum quantities of each call up?  
In order to effectively calculate shipping costs, we need to know the frequency and sizes of each call up or if it will be one call up each year of 8000 of each unit?

**Answer 1)**

- a. The sequential number code and the owner will be provided to selected bidder before placing orders.
- b. The numbering system must be placed on the back of each card in the magnetic as indicated in the image below: point ICLASS NUMBERING - M - Sequential Matching Internal/External (Inkjetted).



In addition, our readers should be able to read the card number to match the data between the card and the database. So, the card number must also be programmed into the card.

- c) The quantities of the cards ordered annually are about 8000 cards. Call-ups are approximately 100 to 200 cards.

Solicitation No. - N° de l'invitation

W3380-11J049/A

Amd. No. - N° de la modif.

001

Buyer ID - Id de l'acheteur

mta375

Client Ref. No. - N° de réf. du client

W3380-11-J049

File No. - N° du dossier

MTA-1-34394

CCC No./N° CCC - FMS No/ N° VME

---

Question 2)

Can you please provide the reference number needed to complete the HID?

Answer 2)

In Attachment, you will find the completed guide with the necessary information required on HID cards.

## 202/212 - Combination Card (iCLASS / Prox) Ordering Guide

The iCLASS Prox contactless smart card offers read/write and HID proximity capability in a single card. Add new applications while leveraging your investment in existing access control systems. Personalize the card with a photo ID, magnetic stripe, barcode, or anti-counterfeiting element.

Ensure each required option has been checked with the appropriate choice to fulfill a completed order form.

**Base Model** ☒ **202 Standard PVC** ☐ **212 Composite 40% Polyester / PVC \***

### iCLASS Memory Size and Allocation (Check One)

- ☒ 0 - 2k Bits (256 Bytes) with 2 Application Areas  
☐ 1 - 16k Bits (2k Bytes) with 2 Application Areas  
☐ 2 - 16k Bits (2k Bytes) with 16 Application Areas  
☐ 3 - 32k Bits (4K Bytes) Application areas 16k/2+16k/1  
☐ 4 - 32k Bits (4K Bytes) Application areas 16k/16+16k/1

### iCLASS Programming (Check One)

- ☐ C - Configured, Non-Programmed iCLASS & initialized 125 kHz Proximity. Programming Information Not Required.  
☐ A - Configured, Non-Programmed iCLASS, Programmed 125 kHz Proximity. Specify Programming Information.  
☐ P - Programmed iCLASS only and Prox initialized. Specify Programming Information.  
☒ B - Programmed 125 kHz Proximity and iCLASS. Specify Programming Information -

### Front Packaging (Check One)

- ☒ G - Plain White with Gloss Finish  
☐ C - Custom Artwork with Gloss Finish - Specify Custom Artwork Number<sup>1</sup>

### Back Packaging (Check One)

- ☐ G - Plain White with Gloss Finish<sup>2</sup>  
☐ C - Custom Artwork with Gloss Finish - Specify Custom Artwork Number<sup>1</sup>  
☒ 1 - Plain White with Gloss Finish with Magnetic Stripe<sup>2</sup>  
☐ 3 - Custom Artwork with Gloss Finish with Magnetic Stripe - Specify Custom Artwork Number<sup>1</sup>

### iCLASS Card Numbering<sup>3</sup> (Check One)

- ☒ M - Sequential Matching Internal/External (Inkjetted)  
☐ N - No External Card Numbering  
☐ S - Sequential Internal/Sequential Non-Matching External (Inkjetted)  
☐ R - Random Internal/Non-Matching Sequential External (Inkjetted)

### Slot Punch<sup>5</sup> (Check One)

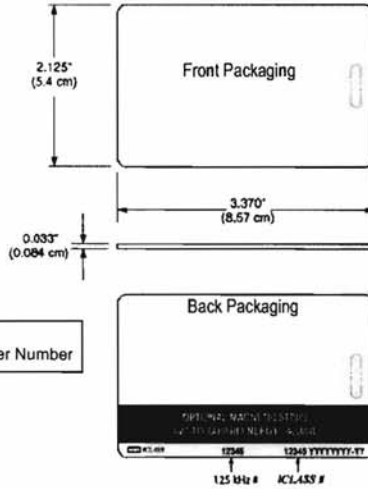
- ☒ N - No Slot Punch (Printed location of vertical slot punch will remain)  
☐ V - Vertical Slot Punch

### 125 kHz Card Numbering<sup>3</sup> (Check One)

- ☒ M - Sequential Matching Internal/External (Inkjetted)  
☐ N - No External Card Numbering  
☐ S - Sequential Internal/Sequential Non-Matching External (Inkjetted)  
☐ R - Random Internal/Non-Matching Sequential External (Inkjetted)

### Option - Custom Artwork<sup>1</sup>

- ☐ \_\_\_\_\_ (Specify Artwork Number - Refer to the Custom Artwork Forms for new artwork)



- ☐ A - Sequential Matching Internal/External (Laser Engraved)<sup>4</sup>  
☐ B - Sequential Internal/Sequential Non-Matching External (Laser Engraved)<sup>4</sup>  
☐ C - Random Internal/Non-Matching Sequential External (Laser Engraved)<sup>4</sup>

- ☐ A - Sequential Matching Internal/External (Laser Engraved)<sup>4</sup>  
☐ B - Sequential Internal/Sequential Non-Matching External (Laser Engraved)<sup>4</sup>  
☐ C - Random Internal/Non-Matching Sequential External (Laser Engraved)<sup>4</sup>

Enter your final card options from the above selections. Example: 2022LGGNNM

Final Part Number \_\_\_\_\_ (Options #)

### iCLASS Programming Information

Bit Numbers 35 bits (example: 26 bit)  
 Format Number H50666 (example: H10301)  
 Facility Code à fournir lors de la commande  
 iCLASS Elite ICE Number (if applicable) - 2  
 (Custom Formats) Site Code \_\_\_\_\_ City Code \_\_\_\_\_  
 OEM Code \_\_\_\_\_  
 Internal Card No. Start \_\_\_\_\_ Stop \_\_\_\_\_  
 External Card No. Start \_\_\_\_\_ Stop \_\_\_\_\_  
 PIN: ☐ Sequential: Start # \_\_\_\_\_ ☐ Random: Length \_\_\_\_\_

### 125 kHz Programming Information

Bit Numbers \_\_\_\_\_ (example: 26 bit)  
 Format Number \_\_\_\_\_ (example: H10301)  
 Facility Code \_\_\_\_\_  
 (Custom Formats) Site Code \_\_\_\_\_ City Code \_\_\_\_\_  
 OEM Code \_\_\_\_\_  
 Internal Card No. Start \_\_\_\_\_ Stop \_\_\_\_\_  
 External Card No. Start \_\_\_\_\_ Stop \_\_\_\_\_  
 Special Instructions: \_\_\_\_\_

<sup>1</sup> For new artwork files, contact Customer Service for custom artwork number, lead-times, and cost. <sup>2</sup> Cards ordered with plain white front and back packaging, or custom artwork, will still have a small "HID logo" and reference number printed in the lower left-hand corner and a slot punch target printed on the back of the card. <sup>3</sup> The external card number is placed in the bottom right-hand corner for iCLASS 13.56 MHz and in the bottom center for 125 kHz Proximity on the back of the card. <sup>4</sup> For Laser Engraved external numbers, consult factory for lead times and cost. <sup>5</sup> Cards are provided with an optional slot punch at no additional charge. Some video imaging printers cannot accommodate pre-slot punched cards. \* The composite construction is recommended for all cards with over-laminate applied. Consult with the printer manufacturer prior to ordering.