

GEN. ARRGT. SHT. 2.....DRG. No 72-301.

Diagram illustrating the placement of a window on a sloped roof (Wheelhouse) and a horizontal deck (L Windows).

Wheelhouse Windows: The diagram shows a window on a sloped roof. The window is positioned between the **WHEELHOUSE FLOOR PLYG.** and the **WHEELHOUSE TOP PLYG.**. The distance from the top of the window frame to the top of the floor plying is labeled **1830 TO CLEAR GLASS**.

L Windows (Except Wheelse): The diagram shows a window on a horizontal deck. The window is positioned between the **DECK PLYG.** and the **DECK TOP PLYG.**. The distance from the top of the window frame to the top of the deck plying is labeled **1836 TO CLEAR GLASS**. The distance from the bottom of the window frame to the outside of the frame is labeled **32 TO OUTSIDE OF FRAME**.

POSITION OF WINDOWS BETWEEN DECKS

ABBREVIATIONS

F	=	FIXED WINDOW
V.S.		VERTICAL SLIDING WINDOW
H.S.		HORIZONTAL SLIDING WINDOW
C.V.S.		CLEAR VIEW SCREEN
H	*	HINGED (AT TOP ONLY)

no.	REVISION	by	date
Print issued to:			

prints issued

[illegible]

C.C.G.S. ANN HARVEY
APRIL 1987
AS FITTED



Canadian
Coast Guard

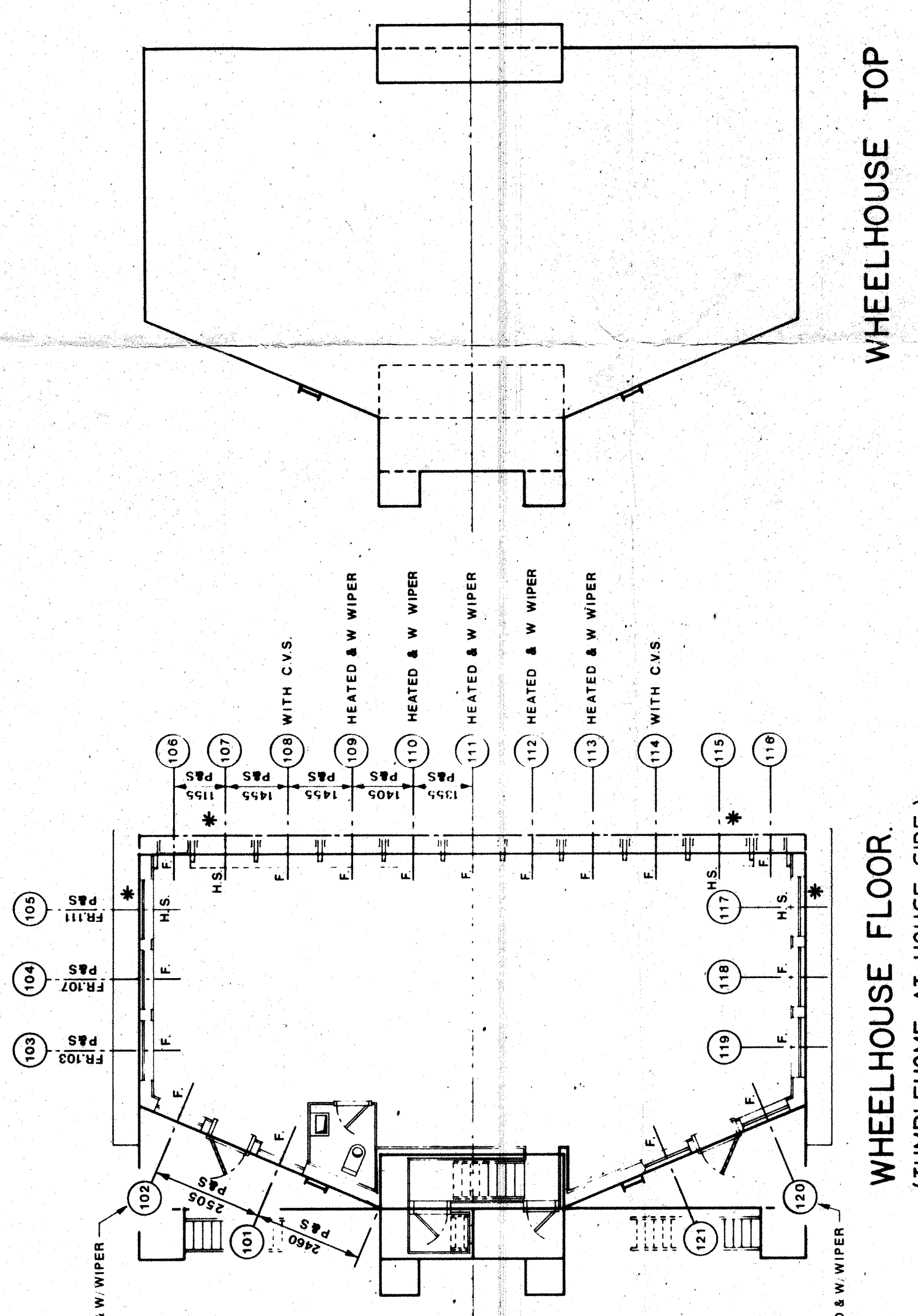
PROJECT	HULL N° 72
TYPE 1100 NAVALS TENDER/LIGHT ICEBREAKER	

WINDOW LIST

DRAWN BY:	A MCL
CHECKED BY:	J. J. [Signature]
DATE:	04-05-84
REVISION N°	△

APPR.	SENT	APPR.	SENT	Account no.
OWNER	28 05 84	4-07-84		
LLORES	28 05 84	14-06-84		
S.S.B.	28 05 84	14-06-84		
Scale:	1:100			

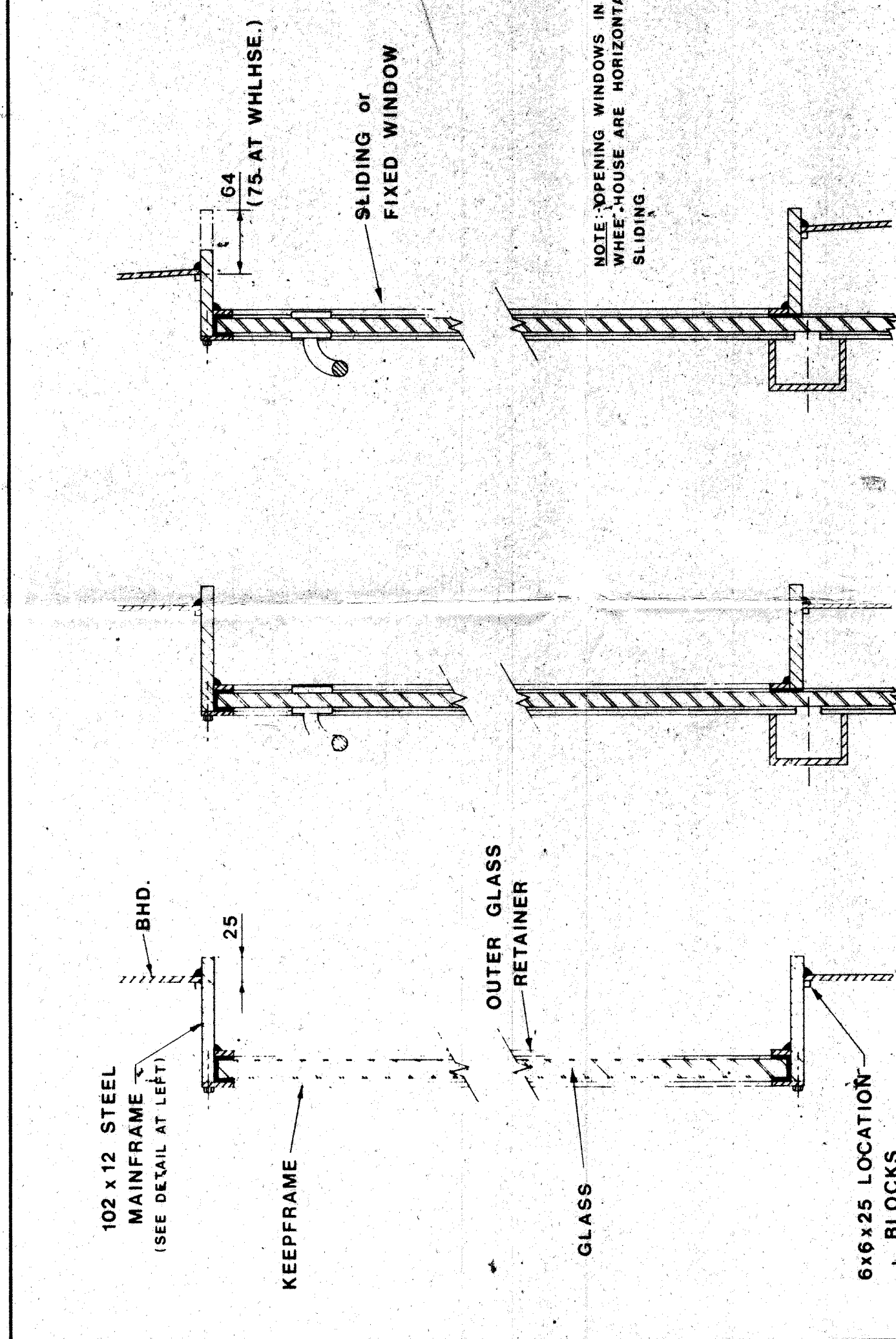
DRG. N°: 72 -310



WHEELHOUSE TOP

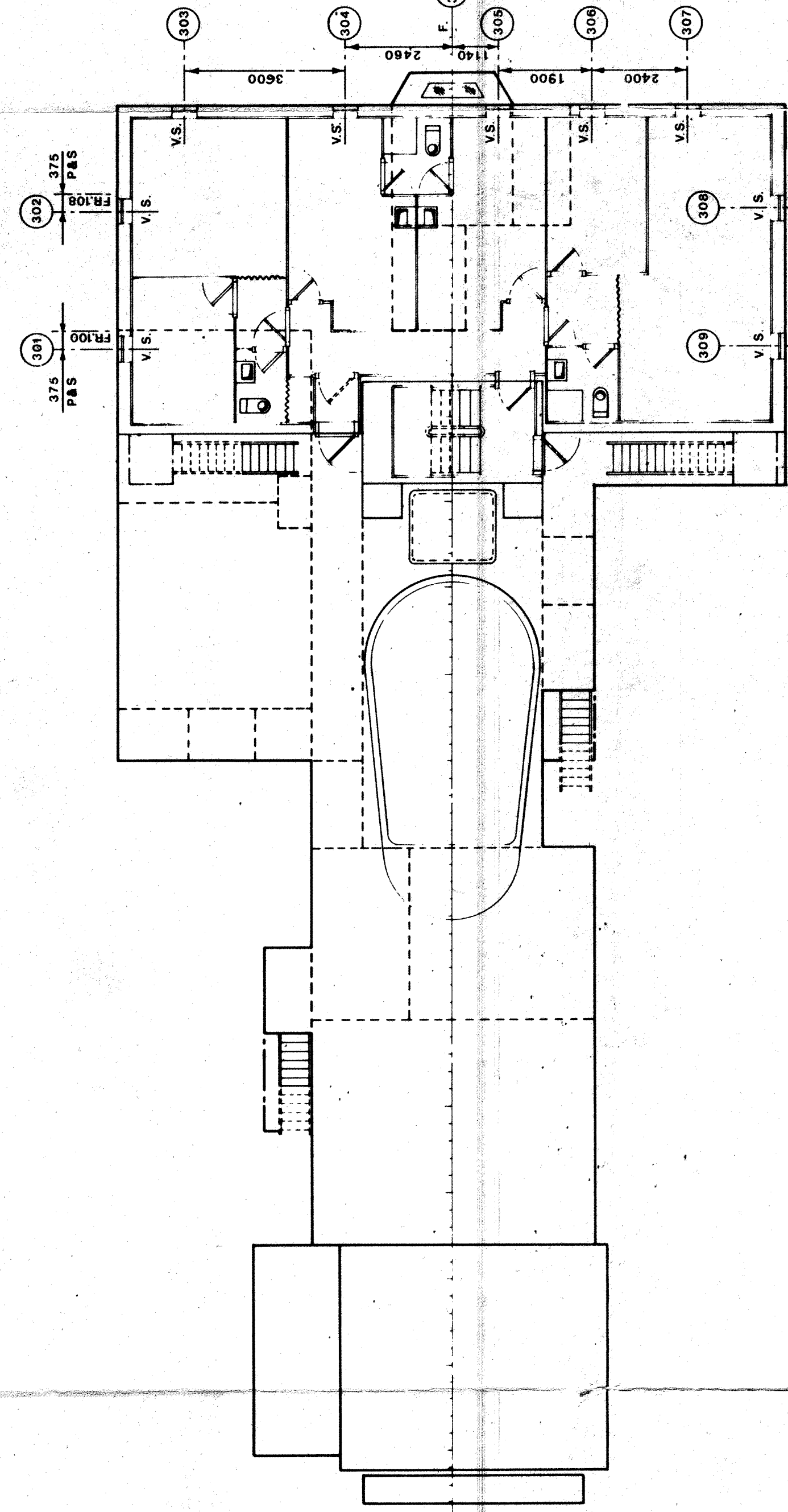
WHEELHOUSE FLOOR.

* - DENOTES SLIDING SECTION OF WINDOW

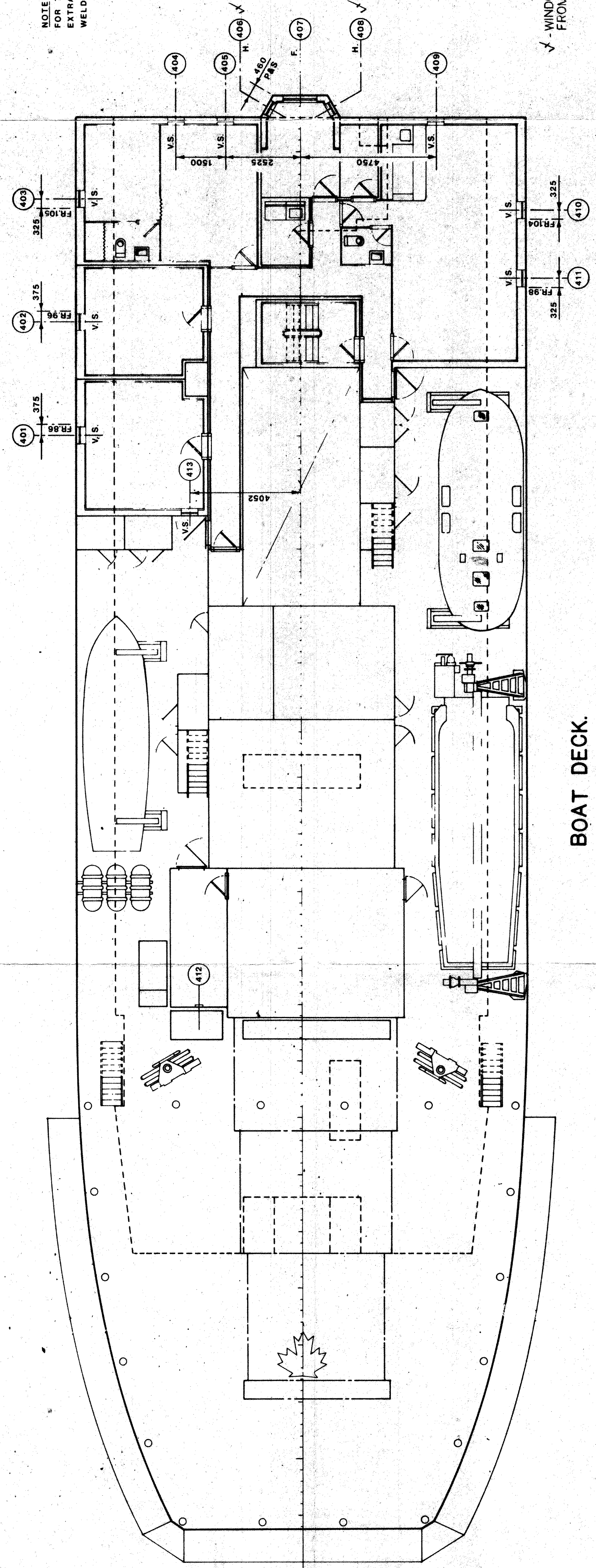


TYPICAL SECTION THRO'
SLIDING WINDOW

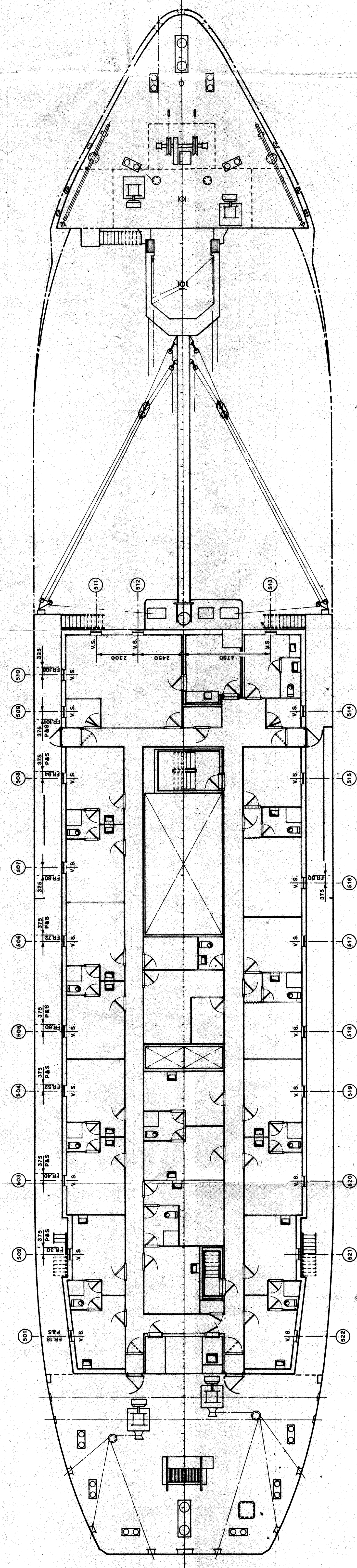
WINDOW DETAILS (1:5)



OFFICER'S DECK



BOAT DECK.
TUMBLEHOME AT HOUSE SIDE.)



UPPER DECK.
NO TUMBLEHOME AT HOUSE SIDE

FORECASTLE DECK.