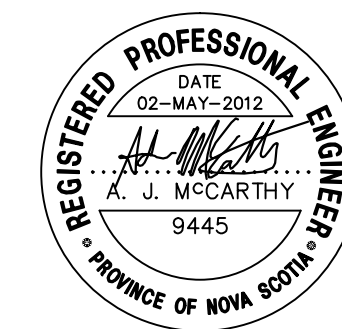


LEGEND

- POLE OR BOLLARD
- LIGHT STANDARD
- FIRE HYDRANT
- CATCH BASIN
- MANHOLE
- CULVERT
- SURVEY CONTROL



2	REVISED FOR ADDENDUM	MAY 2012
1	ISSUED FOR TENDER	MAR 2012
revisions		date

project
**4 BED
SLE EXPANSION**
NOVA INSTITUTION FOR WOMEN
TRURO, NS

drawing
FINISHED SURFACE

designed A. McCARTHY conçu
date MAY 2, 2012
drawn A. McCARTHY dessiné
date MAY 2, 2012
approved A. McCARTHY approuvé
date MAY 2, 2012
Tender Soumission

PWSSC Project Manager Administrateur de projets TPSSC
project number no. du projet
R.043928.004
drawing no. no. du dessin

C-4



NOTE:
EXISTING 1.0m CONTOUR INTERVAL TAKEN FROM
TOPOGRAPHICAL SURVEY PROVIDED BY PUBLIC
WORKS AND GOVERNMENT SERVICES CANADA.

NOTE:
SITE INFRASTRUCTURE IS TAKEN FROM A COMBINATION OF
AS-BUILT TOPOGRAPHICAL SURVEY INFORMATION AND DESIGN AND
RECORD INFORMATION PROVIDED BY PUBLIC WORKS AND
GOVERNMENT SERVICES CANADA, AS WELL AS DESIGN INFORMATION
FROM THIS PROJECT, AS SHOWN ON SHEETS C-1 AND C-2.

