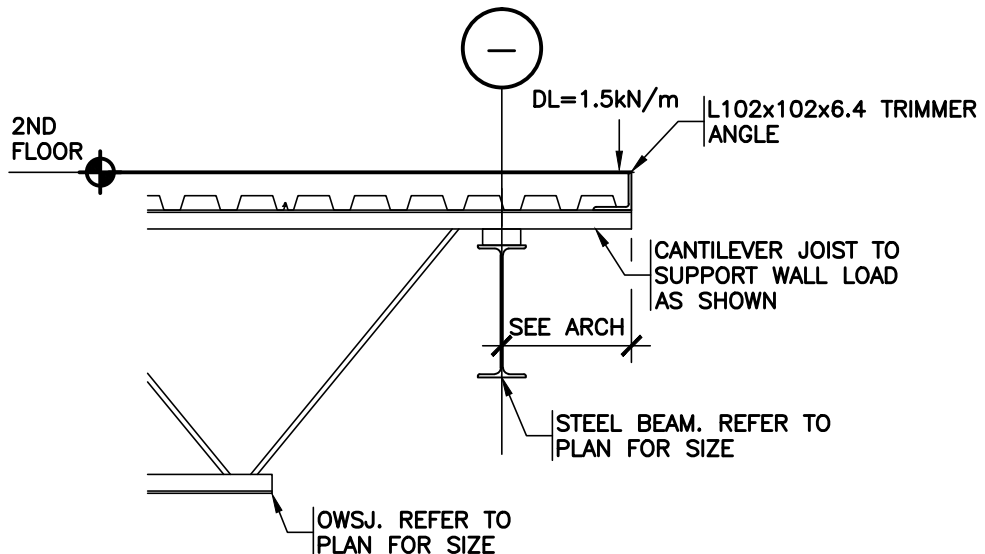


1
SSK1.0

SECTION

SUPPORT AT TRIMMER ANGLE
PARALLEL TO JOISTS

1:20



2
SSK1.0

SECTION

SUPPORT AT TRIMMER ANGLE
PERPENDICULAR TO JOISTS

1:20

Client:



Government of
Canada

Gouvernement du
Canada

Project No.

1322-003

Addendum No.

ADD-07

Reference Drawing

S2.0



Building Structures Division

Ph. (519)743-6500 www.mte85.com

PROJECT

NIAGARA OFFICE
ADMINISTRATION FACILITY

NIAGARA-ON-THE-LAKE

ON

DRAWING

SUPPORT AT 2ND FLOOR
TRIMMER ANGLES

MTE Project No.
35220-100

Drawn By
MRR

Date
JUNE 25, 2012

Scale
1:20

Drawing No.
SSK1.0