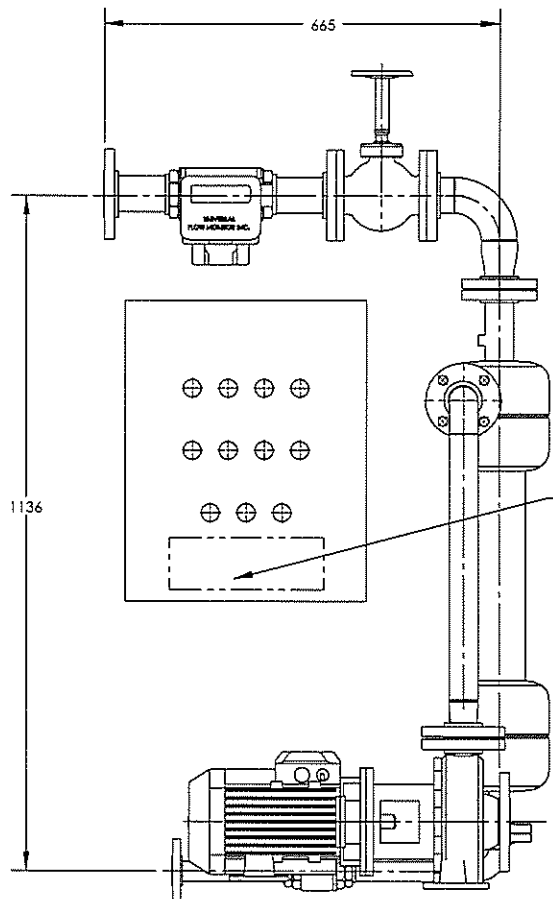
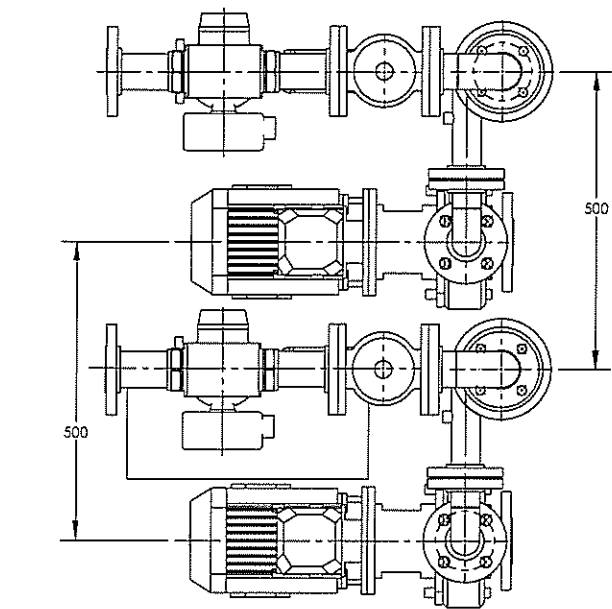
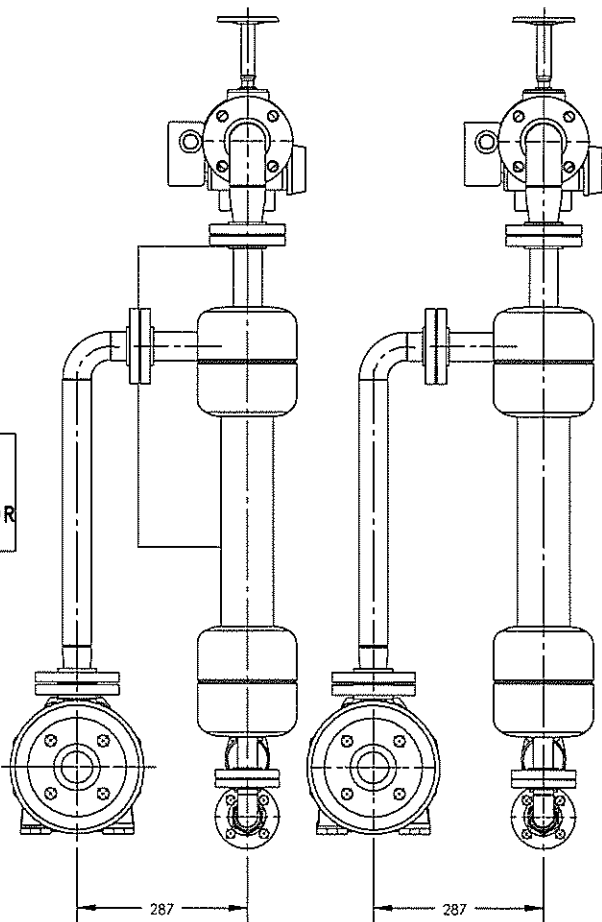


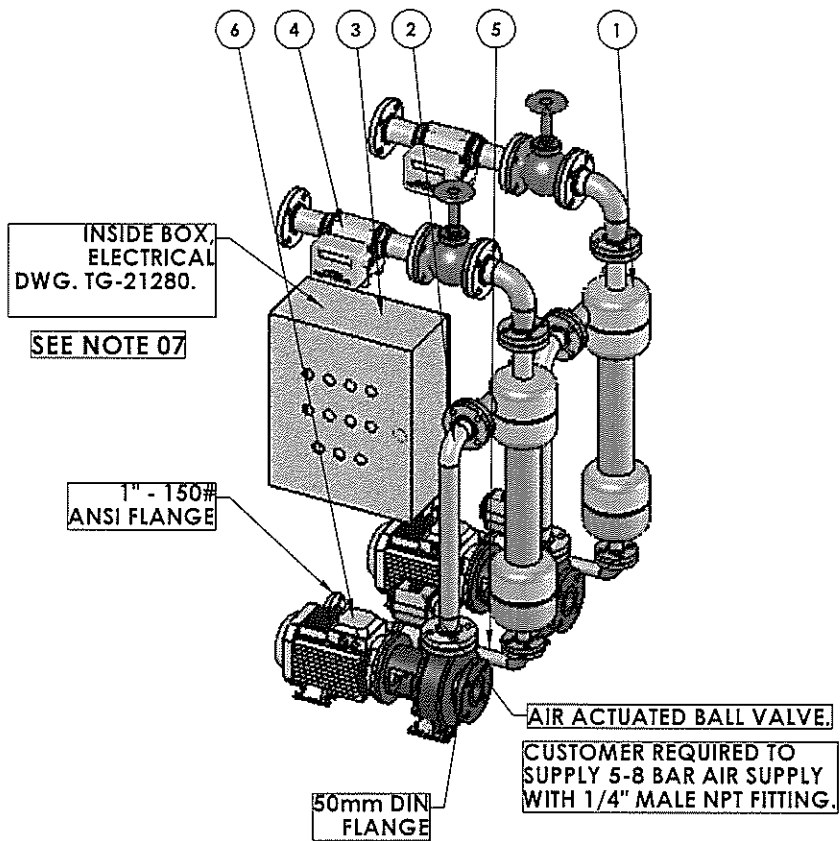
ALL DIMENSIONAL INFORMATION IS BASED ON A MACHINING TEMPERATURE OF 21 °C, UNLESS STATED OTHERWISE. MACHINE GROOVES ONLY WHERE SHOWN



GENERAL ASSEMBLY  
NUMBER AND REVISION  
(IF APPLICABLE) SCRIBED  
ON INSIDE FACE OF DOOR  
PANEL.



ITEM NO.	QTY.	Description	Material	REMARKS	DRAWING NUMBER
1	2	(40-75) GPM - SEPARATOR (WQP)	CuNI 90-10		TG-19242
2	2	(40-75) GPM STANDARD PUMP OUTLET	CuNI 90/10		TG-20403
3	1	CONTROL PANEL - DOUBLE-DOUBLE			TG-20400
4	2	(40-75) GPM OUTLET SPOOL WITH FLOWMETER/SWITCH UNITS	CuNI 90/10		TG-21217
5	2	STANDARD PURGE SPOOL (WQP)	CuNI 90-10		TG-20579
6	2	PUMP/MOTOR ASSEMBLY	BRONZE/CAST STEEL	PURCHASE	



GENERAL NOTES:

01. MATERIAL: SEE PARTS LIST
02. DIMENSIONS ARE EXPRESSED IN MM UNLESS NOTED OTHERWISE.
03. DO NOT SCALE THIS DRAWING. WORK TO DIMENSIONS SPECIFIED.
04. TOLERANCES FOR ALL DIMENSIONS SHALL BE NONCUMULATIVE.
05. BREAK ALL CORNERS AND DEBURR ALL SHARP EDGES.
06. ALL FILLET AND RADIUS DIMENSIONS ARE NOMINAL UNLESS NOTED OTHERWISE.
07. WIRING SCHEMATIC NUMBER APPLIES TO STANDARD VOLTAGE UNIT ONLY. DIFFERENT ELECTRICAL SCHEMATIC NUMBER MAY APPLY FOR NON STANDARD VOLTAGE UNITS.

PROPOSAL  
DATE: 01-02-2012

DO NOT SCALE THIS DRAWING. WORK TO DIMENSIONS SPECIFIED

UNLESS SHOWN OTHERWISE, MACHINING TOLERANCES ARE:

GENERAL TOLERANCE:  $\pm 3$  mm

REP.	DESCRIPTION	DATE	DWN	CKD	APP.
THORDON BEARINGS INC. BURLINGTON, ONTARIO, CANADA					
C. PEDOCI	C. RICHARD	C. RICHARD			
		01/02/2012			C
(40-75) GPM - DOUBLE DOUBLE WQP. WITH FLOWMETER & NO BASE FRAME		TG-23222			
		1			