

L O STORAGE
 CAPACITY: 1274
 FEB 11 1972 P 50

F.O. TANK
CAPACITY - 10540 L
FE. 8-10 P43

[illegible][illegible]

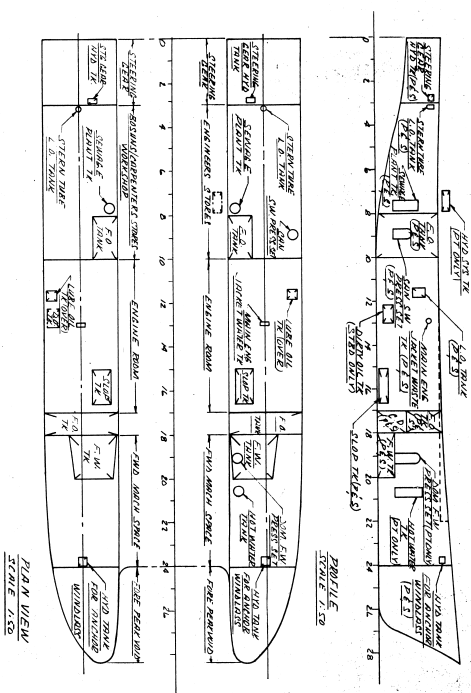
F.O. TANK
CAPACITY - 8660 L
FR. 17-10 P/S

	CAPACITY IN FEET	
800	816	500m
	637	
	418	
	209	

SLOP TANK
CAPACITY - 1045
PM - 19-1678 PLS

Age Group	No change	Increase	Decrease
18-24	45%	35%	20%
25-34	50%	30%	20%
35-44	55%	25%	20%
45-54	60%	20%	20%
55-64	65%	15%	20%
65+	70%	10%	20%

D.O. TANK
CAPACITY - 600 L
FG. 12-13 8780, 9045



PROFILE
SCALE 1:50

PLAN VIEW
SCALE 1:50

FOR MATERIAL REQUIREMENTS AND SPECIFICATIONS
SEE SEPARATE "BILL OF MATERIAL" FOR THIS DRAWING

● BILL OF MATERIAL — COMPLETED ☐

● BILL OF MATERIAL — PASSED TO PURCHASING ☐

NOTES

PRINCIPAL PARTICULATES

LENGTH (ft.)	32.6
BEAM (ft.) (over a hull)	14.0
BEAM (ft.) (over hull)	35.6
DEPTH (ft.)	8.40
DRIVEN DEEP	1.1
DISPLACEMENT (t.)	370.0
STATION BEACON	326 N
FRANK SPARKING	1.20 M

CLASSIFICATION

SALIENT TRADE DRESS (NON-PRODUCES)
 1. **ONE WINNING CLASS** +
 2. **ONE LOSING CLASS** +
 3. **ONE PERFECTION CLASS** +
 4. **ONE LOSS CLASS** +
 5. **ONE WINNING CLASS** +
 6. **ONE LOSING CLASS** +
 7. **ONE PERFECTION CLASS** +
 8. **ONE LOSS CLASS** +
 9. **ONE WINNING CLASS** +
 10. **ONE LOSING CLASS** +
 11. **ONE PERFECTION CLASS** +
 12. **ONE LOSS CLASS** +
 13. **ONE WINNING CLASS** +
 14. **ONE LOSING CLASS** +
 15. **ONE PERFECTION CLASS** +
 16. **ONE LOSS CLASS** +
 17. **ONE WINNING CLASS** +
 18. **ONE LOSING CLASS** +
 19. **ONE PERFECTION CLASS** +
 20. **ONE LOSS CLASS** +
 21. **ONE WINNING CLASS** +
 22. **ONE LOSING CLASS** +
 23. **ONE PERFECTION CLASS** +
 24. **ONE LOSS CLASS** +
 25. **ONE WINNING CLASS** +
 26. **ONE LOSING CLASS** +
 27. **ONE PERFECTION CLASS** +
 28. **ONE LOSS CLASS** +
 29. **ONE WINNING CLASS** +
 30. **ONE LOSING CLASS** +
 31. **ONE PERFECTION CLASS** +
 32. **ONE LOSS CLASS** +
 33. **ONE WINNING CLASS** +
 34. **ONE LOSING CLASS** +
 35. **ONE PERFECTION CLASS** +
 36. **ONE LOSS CLASS** +
 37. **ONE WINNING CLASS** +
 38. **ONE LOSING CLASS** +
 39. **ONE PERFECTION CLASS** +
 40. **ONE LOSS CLASS** +
 41. **ONE WINNING CLASS** +
 42. **ONE LOSING CLASS** +
 43. **ONE PERFECTION CLASS** +
 44. **ONE LOSS CLASS** +
 45. **ONE WINNING CLASS** +
 46. **ONE LOSING CLASS** +
 47. **ONE PERFECTION CLASS** +
 48. **ONE LOSS CLASS** +
 49. **ONE WINNING CLASS** +
 50. **ONE LOSING CLASS** +
 51. **ONE PERFECTION CLASS** +
 52. **ONE LOSS CLASS** +
 53. **ONE WINNING CLASS** +
 54. **ONE LOSING CLASS** +
 55. **ONE PERFECTION CLASS** +
 56. **ONE LOSS CLASS** +
 57. **ONE WINNING CLASS** +
 58. **ONE LOSING CLASS** +
 59. **ONE PERFECTION CLASS** +
 60. **ONE LOSS CLASS** +
 61. **ONE WINNING CLASS** +
 62. **ONE LOSING CLASS** +
 63. **ONE PERFECTION CLASS** +
 64. **ONE LOSS CLASS** +
 65. **ONE WINNING CLASS** +
 66. **ONE LOSING CLASS** +
 67. **ONE PERFECTION CLASS** +
 68. **ONE LOSS CLASS** +
 69. **ONE WINNING CLASS** +
 70. **ONE LOSING CLASS** +
 71. **ONE PERFECTION CLASS** +
 72. **ONE LOSS CLASS** +
 73. **ONE WINNING CLASS** +
 74. **ONE LOSING CLASS** +
 75. **ONE PERFECTION CLASS** +
 76. **ONE LOSS CLASS** +
 77. **ONE WINNING CLASS** +
 78. **ONE LOSING CLASS** +
 79. **ONE PERFECTION CLASS** +
 80. **ONE LOSS CLASS** +
 81. **ONE WINNING CLASS** +
 82. **ONE LOSING CLASS** +
 83. **ONE PERFECTION CLASS** +
 84. **ONE LOSS CLASS** +
 85. **ONE WINNING CLASS** +
 86. **ONE LOSING CLASS** +
 87. **ONE PERFECTION CLASS** +
 88. **ONE LOSS CLASS** +
 89. **ONE WINNING CLASS** +
 90. **ONE LOSING CLASS** +
 91. **ONE PERFECTION CLASS** +
 92. **ONE LOSS CLASS** +
 93. **ONE WINNING CLASS** +
 94. **ONE LOSING CLASS** +
 95. **ONE PERFECTION CLASS** +
 96. **ONE LOSS CLASS** +
 97. **ONE WINNING CLASS** +
 98. **ONE LOSING CLASS** +
 99. **ONE PERFECTION CLASS** +
 100. **ONE LOSS CLASS** +
 101. **ONE WINNING CLASS** +
 102. **ONE LOSING CLASS** +
 103. **ONE PERFECTION CLASS** +
 104. **ONE LOSS CLASS** +
 105. **ONE WINNING CLASS** +
 106. **ONE LOSING CLASS** +
 107. **ONE PERFECTION CLASS** +
 108. **ONE LOSS CLASS** +
 109. **ONE WINNING CLASS** +
 110. **ONE LOSING CLASS** +
 111. **ONE PERFECTION CLASS** +
 112. **ONE LOSS CLASS** +
 113. **ONE WINNING CLASS** +
 114. **ONE LOSING CLASS** +
 115. **ONE PERFECTION CLASS** +
 116. **ONE LOSS CLASS** +
 117. **ONE WINNING CLASS** +
 118. **ONE LOSING CLASS** +
 119. **ONE PERFECTION CLASS** +
 120. **ONE LOSS CLASS** +
 121. **ONE WINNING CLASS** +
 122. **ONE LOSING CLASS** +
 123. **ONE PERFECTION CLASS** +
 124. **ONE LOSS CLASS** +
 125. **ONE WINNING CLASS** +
 126. **ONE LOSING CLASS** +
 127. **ONE PERFECTION CLASS** +
 128. **ONE LOSS CLASS** +
 129. **ONE WINNING CLASS** +
 130. **ONE LOSING CLASS** +
 131. **ONE PERFECTION CLASS** +
 132. **ONE LOSS CLASS** +
 133. **ONE WINNING CLASS** +
 134. **ONE LOSING CLASS** +
 135. **ONE PERFECTION CLASS** +
 136. **ONE LOSS CLASS** +
 137. **ONE WINNING CLASS** +
 138. **ONE LOSING CLASS** +
 139. **ONE PERFECTION CLASS** +
 140. **ONE LOSS CLASS** +
 141. **ONE WINNING CLASS** +
 142. **ONE LOSING CLASS** +
 143. **ONE PERFECTION CLASS** +
 144. **ONE LOSS CLASS** +
 145. **ONE WINNING CLASS** +
 146. **ONE LOSING CLASS** +
 147. **ONE PERFECTION CLASS** +
 148. **ONE LOSS CLASS** +
 149. **ONE WINNING CLASS** +
 150. **ONE LOSING CLASS** +
 151. **ONE PERFECTION CLASS** +
 152. **ONE LOSS CLASS** +
 153. **ONE WINNING CLASS** +
 154. **ONE LOSING CLASS** +
 155. **ONE PERFECTION CLASS** +
 156. **ONE LOSS CLASS** +
 157. **ONE WINNING CLASS** +
 158. **ONE LOSING CLASS** +
 159. **ONE PERFECTION CLASS** +
 160. **ONE LOSS CLASS** +
 161. **ONE WINNING CLASS** +
 162. **ONE LOSING CLASS** +
 163. **ONE PERFECTION CLASS** +
 164. **ONE LOSS CLASS** +
 165. **ONE WINNING CLASS** +
 166. **ONE LOSING CLASS** +
 167. **ONE PERFECTION CLASS** +
 168. **ONE LOSS CLASS** +
 169. **ONE WINNING CLASS** +
 170. **ONE LOSING CLASS** +
 171. **ONE PERFECTION CLASS** +
 172. **ONE LOSS CLASS** +
 173. **ONE WINNING CLASS** +
 174. **ONE LOSING CLASS** +
 175. **ONE PERFECTION CLASS** +
 176. **ONE LOSS CLASS** +
 177. **ONE WINNING CLASS** +
 178. **ONE LOSING CLASS** +
 179. **ONE PERFECTION CLASS** +
 180. **ONE LOSS CLASS** +
 181. **ONE WINNING CLASS** +
 182. **ONE LOSING CLASS** +
 183. **ONE PERFECTION CLASS** +
 184. **ONE LOSS CLASS** +
 185. **ONE WINNING CLASS** +
 186. **ONE LOSING CLASS** +
 187. **ONE PERFECTION CLASS** +
 188. **ONE LOSS CLASS** +
 189. **ONE WINNING CLASS** +
 190. **ONE LOSING CLASS** +
 191. **ONE PERFECTION CLASS** +
 192. **ONE LOSS CLASS** +
 193. **ONE WINNING CLASS** +
 194. **ONE LOSING CLASS** +
 195. **ONE PERFECTION CLASS** +
 196. **ONE LOSS CLASS** +
 197. **ONE WINNING CLASS** +
 198. **ONE LOSING CLASS** +
 199. **ONE PERFECTION CLASS** +
 2

DESCRIPTIVE NOTATION

REFERENCE DRAWINGS	
ITEM	TITLE
1	
2	
3	
4	
5	
6	
7	
8	
9	
10	
11	
12	
13	
14	
15	
16	
17	
18	
19	
20	
21	
22	
23	
24	
25	
26	
27	
28	
29	
30	
31	
32	
33	
34	
35	
36	
37	
38	
39	
40	
41	
42	
43	
44	
45	
46	
47	
48	
49	
50	
51	
52	
53	
54	
55	
56	
57	
58	
59	
60	
61	
62	
63	
64	
65	
66	
67	
68	
69	
70	
71	
72	
73	
74	
75	
76	
77	
78	
79	
80	
81	
82	
83	
84	
85	
86	
87	
88	
89	
90	
91	
92	
93	
94	
95	
96	
97	
98	
99	
100	

NOTE	✓	DRAWN BY: J. LEAND	DATE: 10-20-68	SHIP
THIS DRAWING IS -		CHECKED BY:	DATE:	ACCOMPLISHED BY:
PRELIMINARY		SCALE: AS NOTED	100' = 3" AS	BY: J. LEAND
APPROVED FOR		DWG NO. 45008	1 OF 1	REVISIONS
PRODUCTION				

GEORGETOWN SHIPYARD
GEORGETOWN P.E.I.
CANADA

APPROVAL: