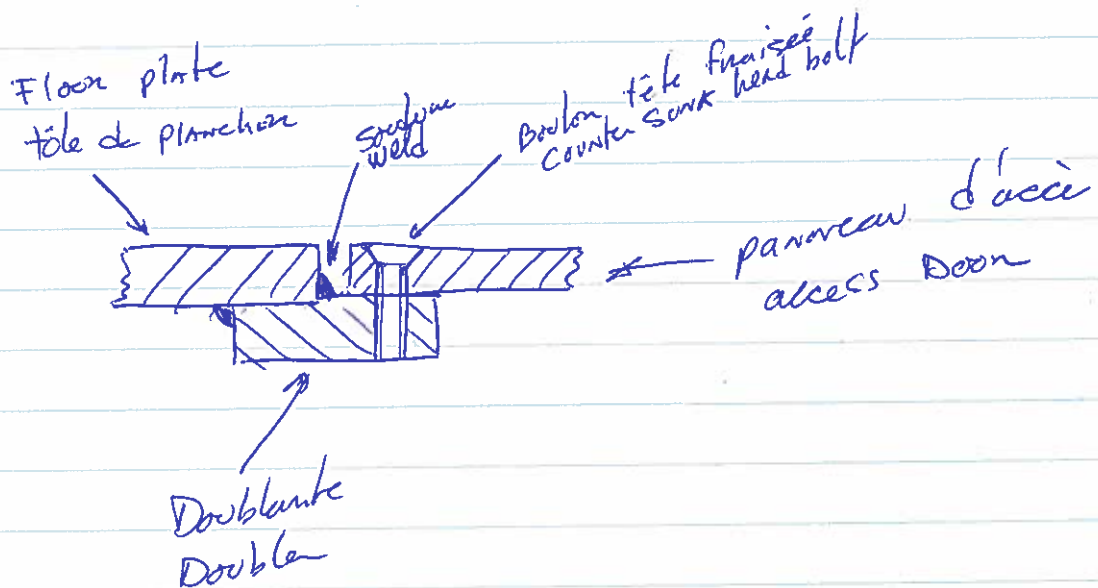


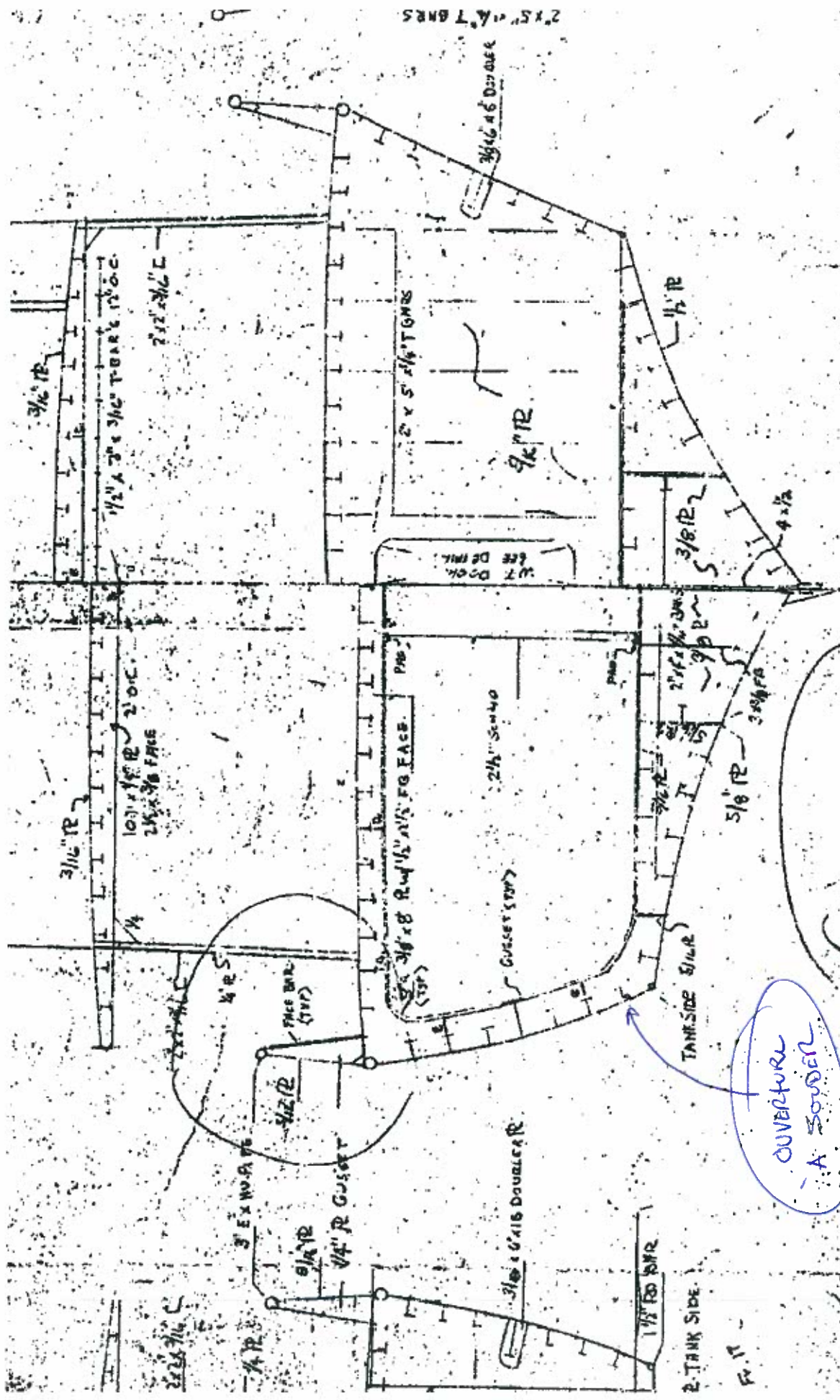
NGCC / CCGS Louisbourg

PANNEAU D'ACCÈS : SALLES DE BAINS ARRIÈRES
ACCESS DOOR, AFT BATHROOMS



1 - Dimensions à être décidées sur place (ne sera pas plus grand que 10" X 12")
Dimension to be decided on site (will not be larger than 10" X 12")

2 - Le panneau sera monté égal au plancher
Panel to be flush mount with the floor



HALF SECT FRIO

HALF SECT FR 15

TYPICAL SECTION S

ALL DIMENSIONS ARE IN INCHES
SCALE 3/8"=1'-0"

OUVERTURE
- A SOLDER

2-TANK SIDE

FR 1

2'x5" 1/4" T BARS

3/16" 46 DOUBLE

2'x5" 1/4" T BARS

9/16" R

1/2" R

3/8" R

4 1/2"

5/8" R

3/8" R

2 1/2" 1/4" T BARS

3/16" R

2 1/2" 1/4" T BARS

3/16" 46 DOUBLE

OUVERTURE

2 1/2" 1/4" T BARS

3/16" R

FACE BAR (TYP)

1/2" R

1/4" R GUSSET

9/16" R

3' EXH. NO. 16

2'x5" 1/4" T BARS

103" x 1/4" R

2'x5" 1/4" T BARS

2 1/2" 1/4" T BARS

3/16" R

1/4"

3/16" R

2'x5" 1/4" T BARS

3/16" R

1/4"

3/16" R

2'x5" 1/4" T BARS

3/16" R

1/4"

3/16" R

2'x5" 1/4" T BARS

3/16" R

1/4"