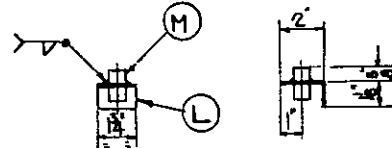
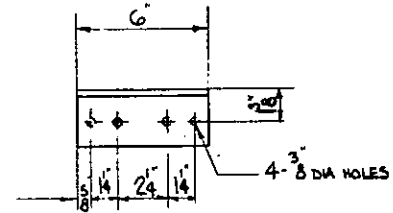


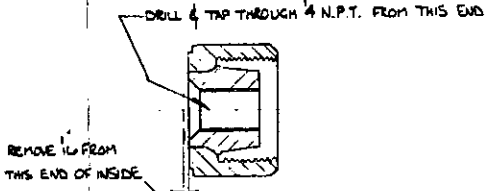
This drawing, in design and detail is the property of JOHN T. HEPBURN, LIMITED and must not be used or copied except in connection with our work, and only after instructions are given from this company. All rights of design or invention are reserved.



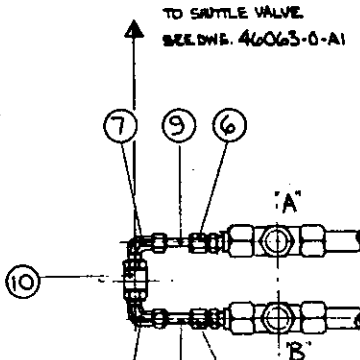
DETAIL OF ITEM 22



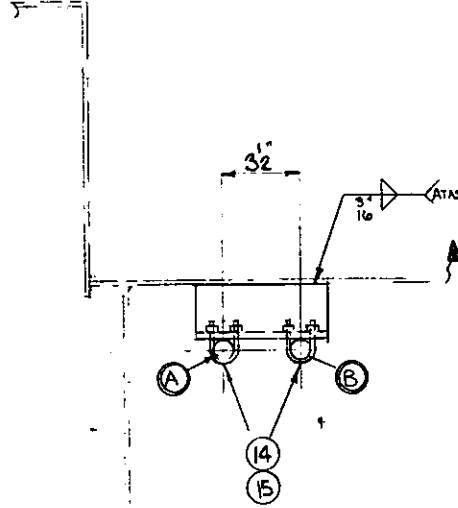
DETAIL OF ITEM 13



DETAIL OF ITEM 3



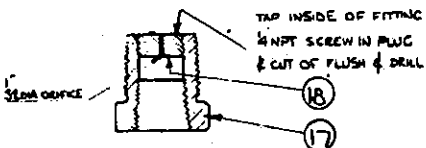
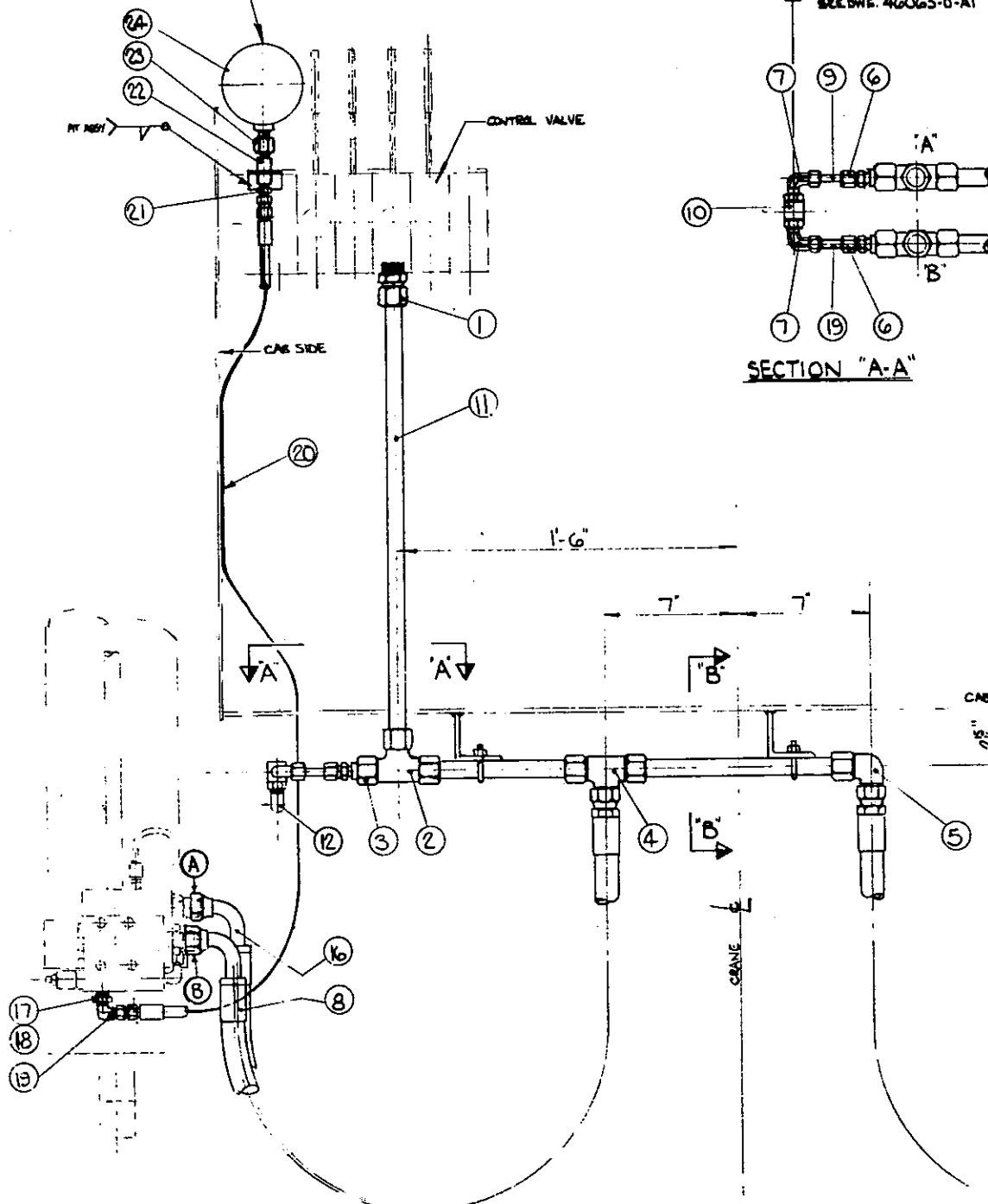
SECTION "A-A"



SECTION "B-B"

NOTE:- ALL TUBING TO BE SAE 1010 STL FULLY ANNEALED PHOSPHATE PICKLED, NEUTRALIZED & BLOWN DRY

PRESSURE GAUGE TO BE MARKED IN RED AT FULL LOAD TESTS TO INDICATE MAX. SAFE WORKING RADINS OF 24'-0" WITH 8 TON LOAD



DETAIL OF ITEMS 17 & 18

| NO. | ITEM | DESCRIPTION   | DWG. NO. | MAT'L | REMARKS                   | ZONE    |
|-----|------|---|----------|-------|---------------------------|---------|
| 1   | 24   | 4" GLYCERINE PRESSURE GAUGE TYPE "A"                                      |          |       | CAN-FLO                   |         |
|     |      | MODEL "CF 2P-3505 0-5000 PSI 1/2" NPT                                     |          |       |                           |         |
| 1   | 23   | REDUCING ADAPTOR 0201-B-6   |          |       | PARKER                    |         |
| 1   | M    | 3000 1/4" NPT PIPE COUPLING   |          |       |                           |         |
| 1   | L    | R 8 x 1 3/4 x 3 LG  |          |       | BEND                      |         |
| 1   | 22   | BRACKET 5/8"  |          |       |                           |         |
| 1   | 21   | JIC/NPT STRAIGHT ADAPTOR 7253-8L712                                       |          |       | GATES                     |         |
| 1   | 20   | HOSE ASSY 1/2" OFF 7303-0926/4C2 DATA HOSE 4'-0 LG / 1 FERRULES 7246-0004 |          |       | GATES                     |         |
| 1   | 19   | JIC/NPT ELBOW 7253-8L782  |          |       | GATES                     |         |
| 1   | 18   | ORIFICE PL MAKE FROM PLUG 1/4" NPT  |          |       | BRASS PARKER              |         |
| 1   | 17   | PIPE THD REDUCER PTR 2 x 4 S  |          |       | STEEL PARKER              | SEE DET |
| 2   | 16   | HOSE ASSY 7303-5926/12C54 HOSE 4' 3-6 LG 7303-5894/FERRULES 7246-0014     |          |       |                           |         |
| 8   | 15   | 5/16-18 UNC NYLON INSERT STOP NUT 5/16 RW                                 |          |       | PAPCO                     |         |
| 4   | 14   | STANDARD U BOLT No 9-M 1/2 PIPE   |          |       | CRANE                     |         |
| 2   | 13   | L 2 1/2 x 2 1/2 x 1/4 x 6 LG  |          |       | 44W                       |         |
| 1   | 12   | JIC 3/4" PIPE THD ADAPTOR ELBOW 7253-445                                  |          |       | GATES                     |         |
| 1   | 11   | 3/8" MAX .065 WALL THICK X 8'-0 LG  |          |       | SAE 1010 EX 1010 AT ASS'Y |         |
| 1   | 10   | SHUTTLE VALVE DSV1-B-B-2  |          |       | HOODMAN CONTROLS          |         |
| 1   | 9    | 3/8" MAX .035 WALL THICK X 1'-0"  |          |       | SAE 1010 AT ASS'Y         |         |
| 2   | 8    | HOSE ASSY 7303-5926/12C54 HOSE 3'-0 LG 7303-5894/FERRULES 7246-0014       |          |       | GATES                     |         |
| 2   | 7    | MALE ELBOW 60CBU-S  |          |       | PARKER                    |         |
| 2   | 6    | MALE CONNECTOR 60CBU-S  |          |       |                           |         |
| 2   | 5    | UNION ELBOW 14ESTX-S  |          |       |                           |         |
| 2   | 4    | UNION TEE 14JBTX-S  |          |       |                           |         |
| 2   | 3    | CAP 14FNU-S   |          |       |                           | SEE DET |
| 2   | 2    | UNION TEE 14JBU-S   |          |       |                           |         |
| 2   | 1    | STRAIGHT THD CONNECTOR 14F5BU-S   |          |       | PARKER                    |         |

FOR DETAILS OF CYLINDERS SEE DWG 46057-0-A1

| DATE | REVISIONS | BY | CHK | DATE | REVISIONS | BY | CHK | DATE | REVISIONS | BY | CHK |
|------|-----------|----|-----|------|-----------|----|-----|------|-----------|----|-----|
|      |           |    |     |      |           |    |     |      |           |    |     |
|      |           |    |     |      |           |    |     |      |           |    |     |
|      |           |    |     |      |           |    |     |      |           |    |     |
|      |           |    |     |      |           |    |     |      |           |    |     |

|                               |               |              |            |
|-------------------------------|---------------|--------------|------------|
| DESIGNED BY                   | AE            | DATE         | 1/7/77     |
| CHECKED BY                    | AF            | DATE         | 1/7/77     |
| DRAFTING APP.                 | EA            | DATE         | 1/7/77     |
| ENG. APP.                     | AE            | DATE         | 1/7/77     |
| SCALE                         | 3" = ONE FOOT | CONTRACT NO. |            |
| REF. DWG.                     |               | CUSTOMER     |            |
| TITLE LUFFING CYLINDER PIPING |               |              |            |
| SHEET NO                      | 1 OF 1        | DWG. NO.     | 46065-0-A1 |
| EST. WGT.                     | 30 LB.        | REV.         | 2          |

DO NOT SCALE-IF IN DOUBT ASK