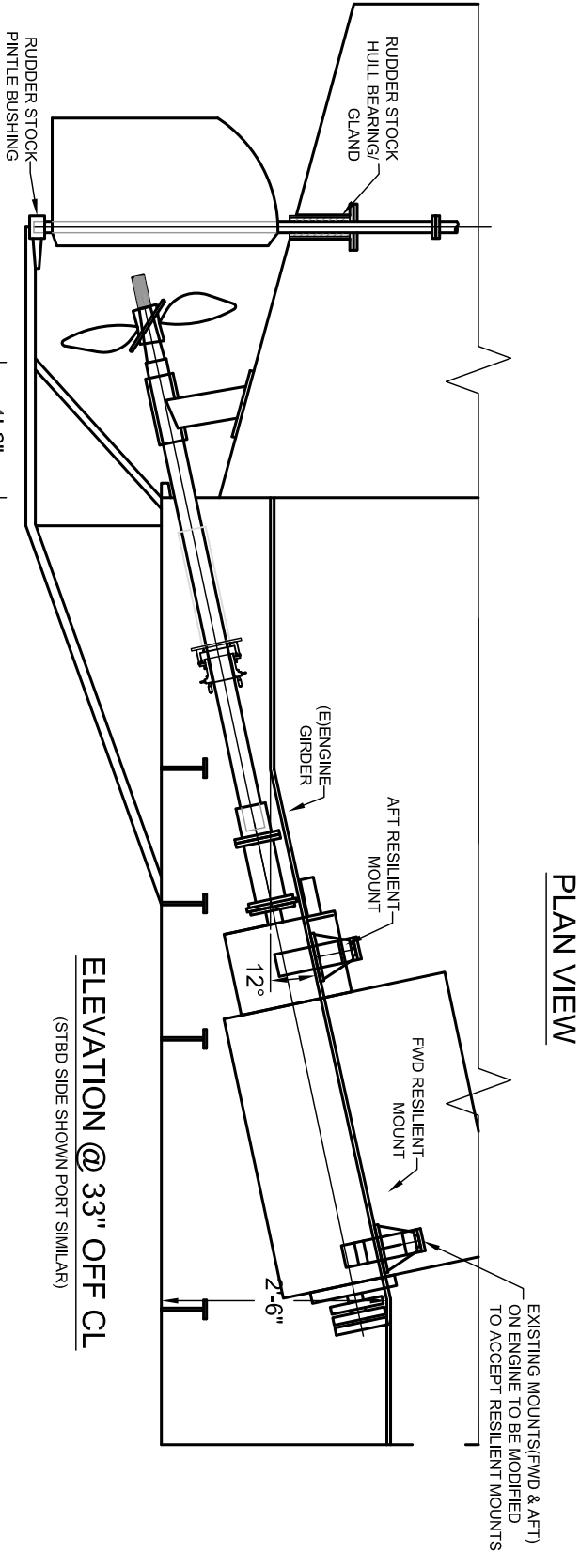
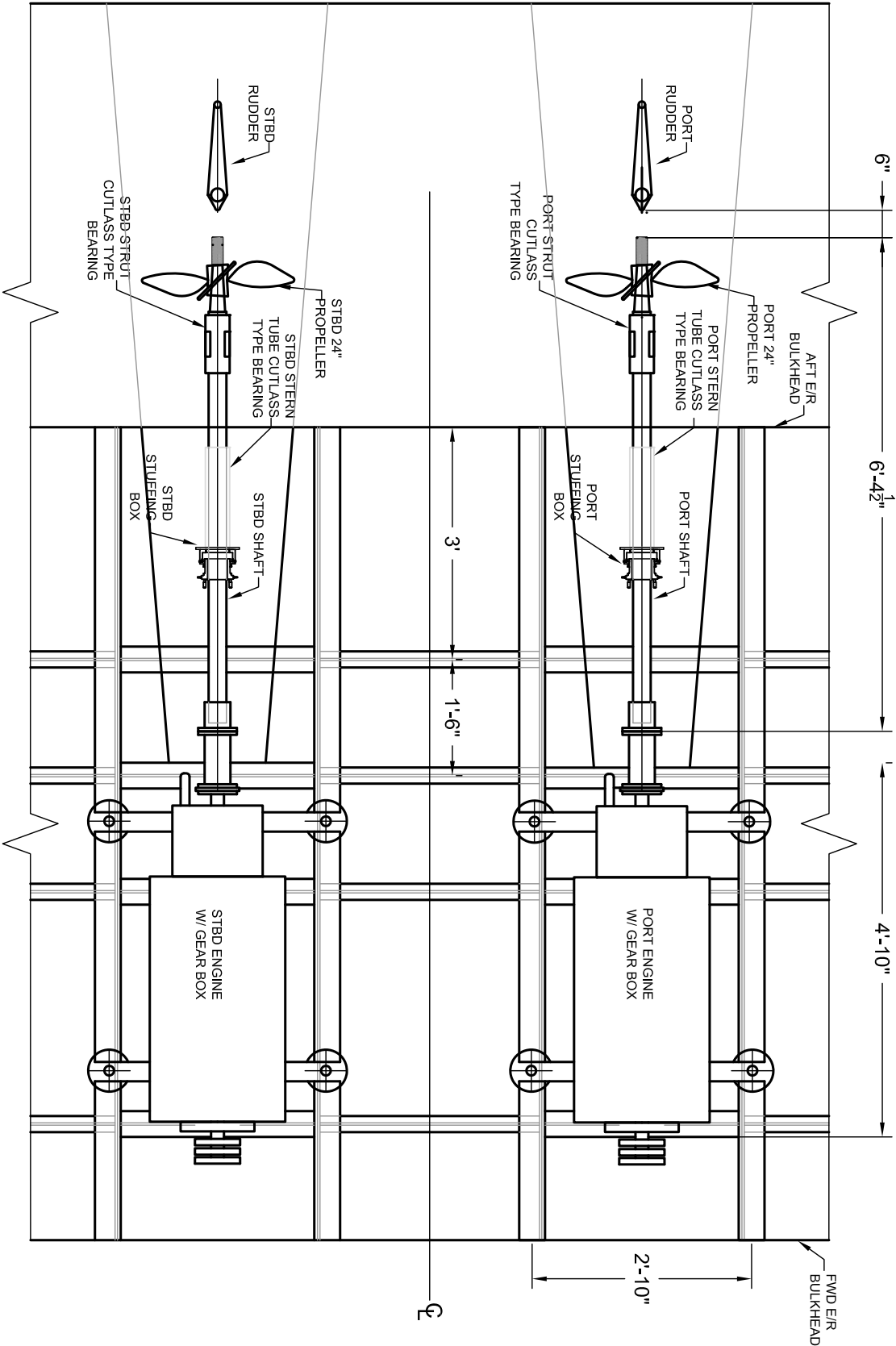
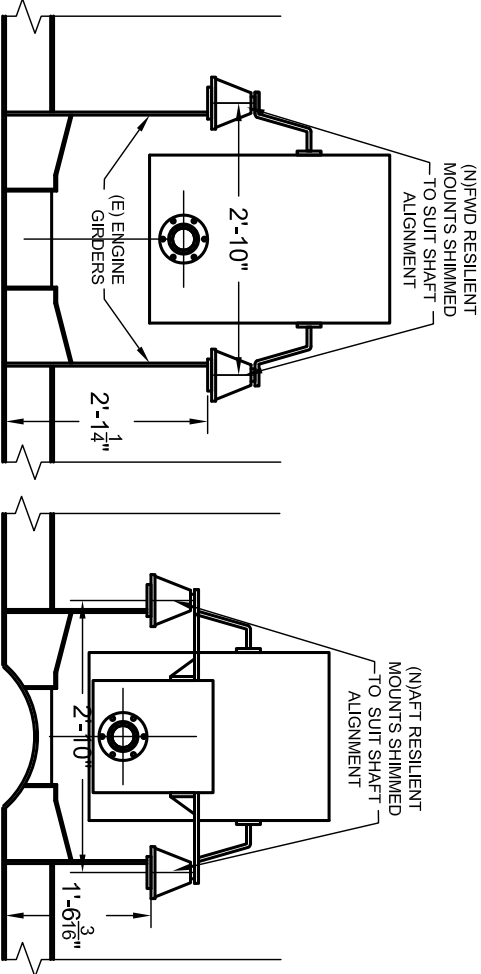


OWNER SUPPLIED ITEMS

- 2 X PERKINS SERIES 6.354 225 HP DIESEL ENGINES W/ TWIN DISK 2.5:1 TRANSMISSION(S)
- 2 X 2.75 " S.S SHAFTS AND COUPLINGS
- 2 X 24" PROPELLERS
- 2 X WIRE HARNESS AND GAUGE PACKAGES
- 2X STUFFING BOXES

GENERAL NOTES:

- ALL DIMENSIONS IN IMPERIAL UNITS
- ALL DIMENSIONS TO BE CONFIRMED IN FIELD PRIOR TO INSTALL
- ALL CONTRACTOR SUPPLIED ITEMS AS PER SPECIFICATION



<div><div><div>MSI</div><div>International (2008) Ltd.</div></div><div>197A Major's Path P.O.BOX 29132 St. John's, NL Canada A1A 5B5 Telephone 709 782 2700 Facsimile 709 782 2707 www.msintl.com</div></div>	Marine Services	TITLE:	LOUIS.S. ST. LAURENT 50' LANDING BARGE ENGINE AND SHAFT REPLACEMENT		
		CLIENT:	D.F.O- VESSEL SERVICES		
		DRAWN BY:	PAL	DATE DRAWN:	MARCH 2012
		CHECKED BY:	M.S.I	DATE CHECKED:	MARCH 2012
			PROJECT NO.:	SCALE:	
			2344	1"= 1'	
			DRAWING NO.:	REVISION NO.:	SHEET NO.:
			2344-01-00	0	1 OF 1