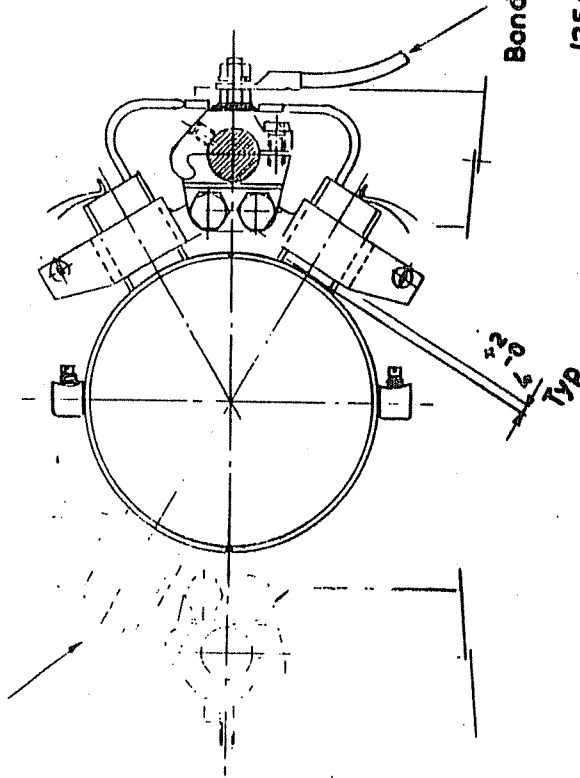


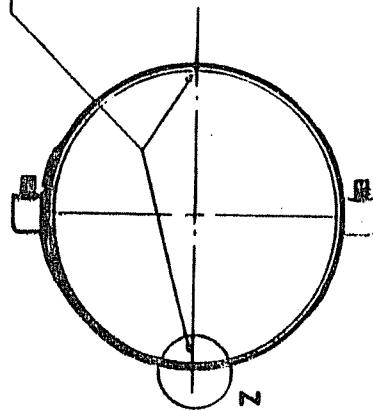
See drg. AM 1043
for Monitor Brush Assy.



Bonding cable supplied
by shipyard.
(35 mm² welding cable)

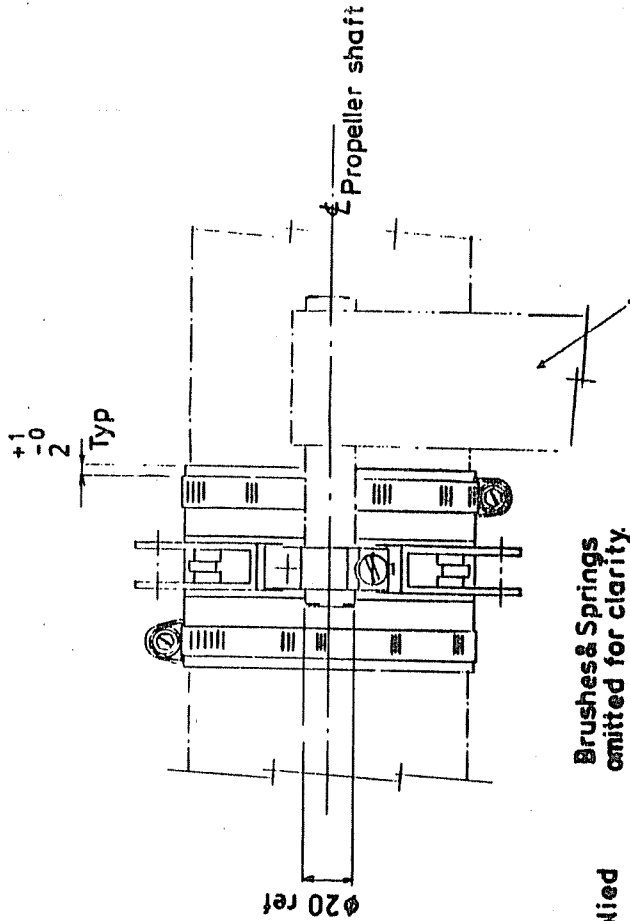
Soft solder infill - file and
polish at final assembly (See detail Z)
NOTE

Mating faces MUST BE FLUSH



Details of Band Clamp

Assembly:
(stainless steel)



Brushes & Springs
omitted for clarity.

Mounting post supplied
by shipyard.

**MATERIAL — COPPER/SILVER INLAY
DIMENSIONS — 2.75" x 0.08" OVERALL
SILVER CENTRE STRIP — 0.875" x 0.020"**

A CLAMP & DETAIL Z AMENDED	
No.	Description



Wilson Walton International (UK) Ltd.

100 Main Street, Bowditch Lane,
Stockton-on-Tees, Cleveland TS16
Tel: (0642) 814106 Telex: 367

The information shown on this drawing is confidential and must not be copied or
conveyed to third parties without the express permission of Wilson Walton International.
Certain items shown on this drawing are subject to worldwide patent applications.

**PROPELLER SHAFT EARTHING ASSEMBLY
FOR COPPER/SILVER INLAY SLIPRING**

Drawn	AAC	Date	18-2-86	Checked	Date
Scale	NTS	DWG. No.	AM 1041	Issue No.	A