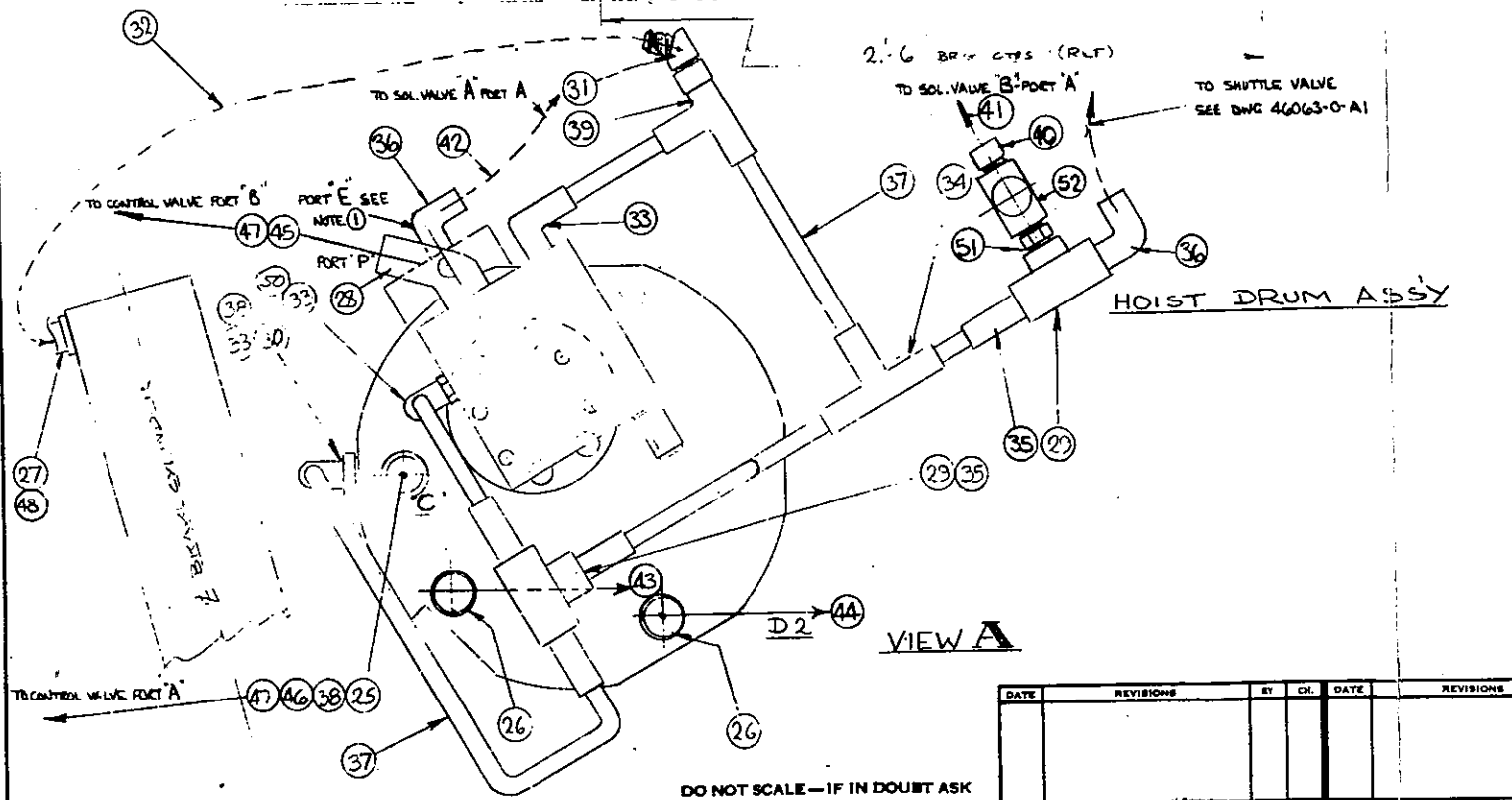
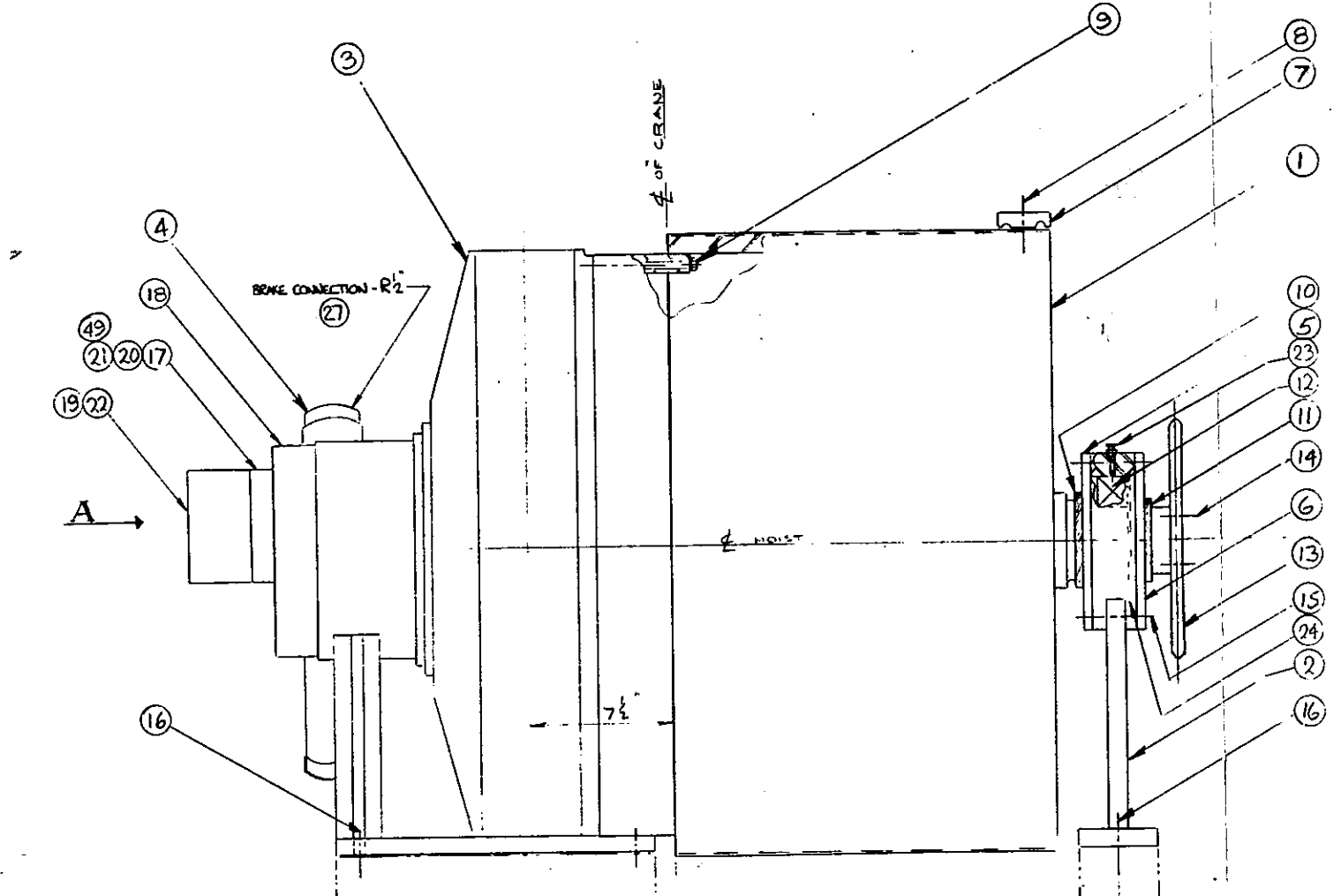


This drawing, in design and detail is the property of JOHN T. HEPBURN, LIMITED and must not be used or copied except in connection with our work, and only after instructions are given from this company. All rights of design or invention are reserved.

DWG. NO. 45555-0-A1



NOTES
1) PORT BLOCK TO BE DRILLED THROUGH TOP 1/4 DIA TO MEET EXISTING PORT E. TAP 1/4 NPT, PLUG EXISTING PORT E USING PLUG FROM BRAKE CYL.
2) ALL TUBING TO BE SAE 1010 STL FULLY ANNEALED, PHOSPHATE PICKLED, NEUTRALIZED & BLOWN DRY

QTY	DESCRIPTION	UNIT	REMARKS
1	50 WIRE VALVE 1/2 NPT "N-400-3-10"	PARKER	
1	51 PIPE NIPPLE 1/2 FF-5	PARKER	
1	50 REDUCING BUSHING 1/2 M. 1/2 F. 1/2 NPT		
1	49 O RING PARKER 2-032 1/2 X 1/2		
1	48 ONE PIECE REDUCER 10-8 TRSTX-5	PARKER	
2	47 STRAIGHT TWO CONNECTOR 16-14 F58X-5	PARKER	
1	46 HOSE ASSY 7505-0504/10000 HOSE 1/2" LG	GATES	
1	45 HOSE ASSY 7505-0504/10000 HOSE 1/2" LG	GATES	
1	44 HOSE ASSY 7505-0504/10000 HOSE 1/2" LG	GATES	
1	43 HOSE ASSY 7505-0504/10000 HOSE 1/2" LG	GATES	
1	42 HOSE ASSY 7505-0504/10000 HOSE 1/2" LG	GATES	
1	41 HOSE ASSY 7505-0504/10000 HOSE 1/2" LG	GATES	
1	40 3/4" TIG ADAPTOR 7153-421		
1	39 FEMALE RUN TEE G-MBU		
2	38 O RING 1 1/2" ID 1/2" DIA		
1	37 COLD DRAIN BURNING VALVE		
2	36 ELBOW 7253-445		
4	35 MALE CONNECTOR GFBU		
1	34 UNION TEE G3BU		
3	33 MALE ELBOW 6 CBU		
1	32 HOSE ASSY 7505-0504/10000 HOSE 1/2" LG	GATES	
1	31 HOSE ASSY 7505-0504/10000 HOSE 1/2" LG	FLOOR	
1	30 ADAPTOR 1/4" TO 1/2" NPT (1/4")		
2	29 SHUTTLE VALVE		
1	28 JOE STUFFING TO PORE AND ADAPTOR		
1	27 ADAPTOR R2 - 8-14 JIC		
2	26 ADAPTOR R2 - 11/2-12 JIC		
1	25 ADAPTOR 1/4" TO 3/4" 1/2" 1/2"		
1	24 CIRCULAR TRUNNION 510X 350		
1	23 ALEMITTE "A 1184 (E. 1184)		
4	22 3/8-16 NC 3/4 LG HEX HD CAP	GR5	
4	21 3/8-16 NC 1" LG HEX HD CAP	GR5	
1	20 O RING 1 1/2 ID 1/2 X 1/2		
1	19 HELI-PO-16G-305-431 HOLDING VALVE		
1	18 2-SPEED VALVE VTS-48-B		
1	17 ADAPTOR PLATE		
7	16 1-8 NC 2 1/2 LG HEX HD CAP	GR5	
6	15 1/2-12 NC 3 1/2 LG HEX HD CAP	GR5	
4	14 7/8-14 NC 1 1/2 LG HEX HD CAP	GR5	
1	13 PLATE SPROCKET		
1	12 SKF 22218		
1	11 V-90A OIL SEAL V-RING		
1	10 V-100A OIL SEAL V-RING		
12	9 3/8-11 NC 6 LG HEX HD CAP	GR5	
3	8 3/8-10 NC 2 1/2 LG HEX HD CAP	GR5	
3	7 ROPE CLAMPS		
1	6 RETAINER PLATE		
1	5 RETAINER PLATE		
1	4 SIDE ACTING BRAKE		
1	3 HAGGLUND MOTOR A 4160		
1	2 DRUM PEDESTAL		
1	1 DRUM		

DRAWN BY	10 30 76	HEPBURN JOHN T. HEPBURN, LIMITED 914 DUPONT STREET, TORONTO, CANADA MECHANICAL DIVISION
CHECKED BY	11 11 76	
DRAFT'S APP.	11 11 76	
ENG. APP.	11 11 76	
SCALE	3" = 1'-0"	CONTRACT NO.
REP. DWG.		CUSTOMER
TITLE HOIST DRUM ASSY		
SHEET NO	1 OF 1	DWG. NO. 45555-0-A1
EST. WGT.	2740 LB.	REV. 8

FIG 1-10