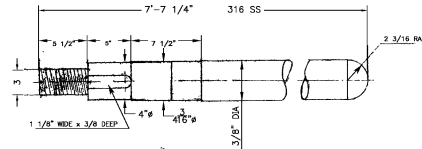
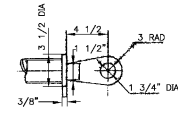


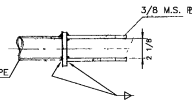
B-B



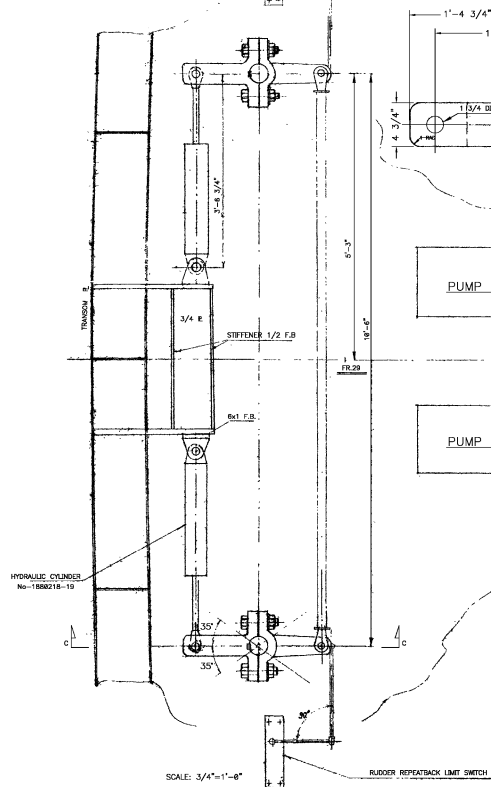
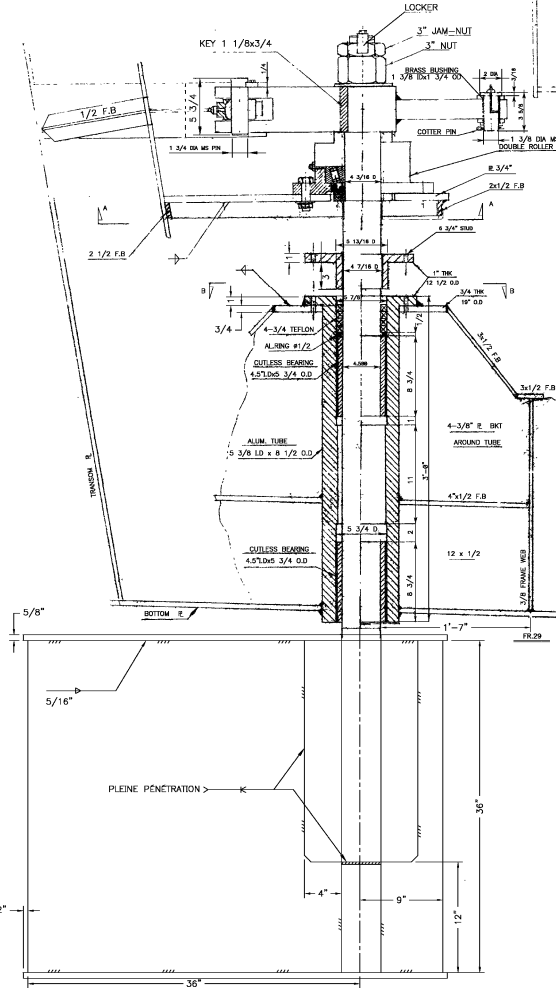
A-A



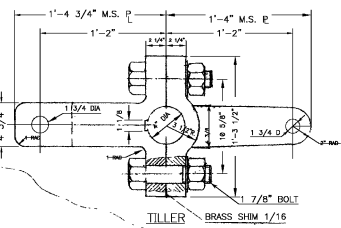
TIE BAR ENDS



D-D



SCALE: 3/4\"=1'-0\"



TILLER

PUMP UNIT

PUMP UNIT

REVISIONS		
NO.	DATE	REMARKS
A	10/01/88	REVISION 10/01/88
B	07/02/88	REVISION 07/02/88

APPROVAL		
DATE	DATE	REMARKS
05/16/87		

N.G.C.C. LOUISBOURG	
BRETON INDUSTRIAL AND MARINE LTD PORT HAWKESBURY NOVA SCOTIA	
122" ALUMINIUM PATROL BOAT HULL No.6	
RUDDER AND STEERING GEAR	
SCALE: 1 1/2" = 1'-0"	APP: _____
DWN : J. WOLF	APP: _____
DWG : No. H-19	DATE: March 01, 1977