

04	ISSUED FOR ADDENDUM 1	13-01-04
03	ISSUED FOR BID	12-11-27
02	ISSUED FOR 99% REVIEW	12-11-16
01	ISSUED FOR 20% REVIEW	12-10-12
	revision	date

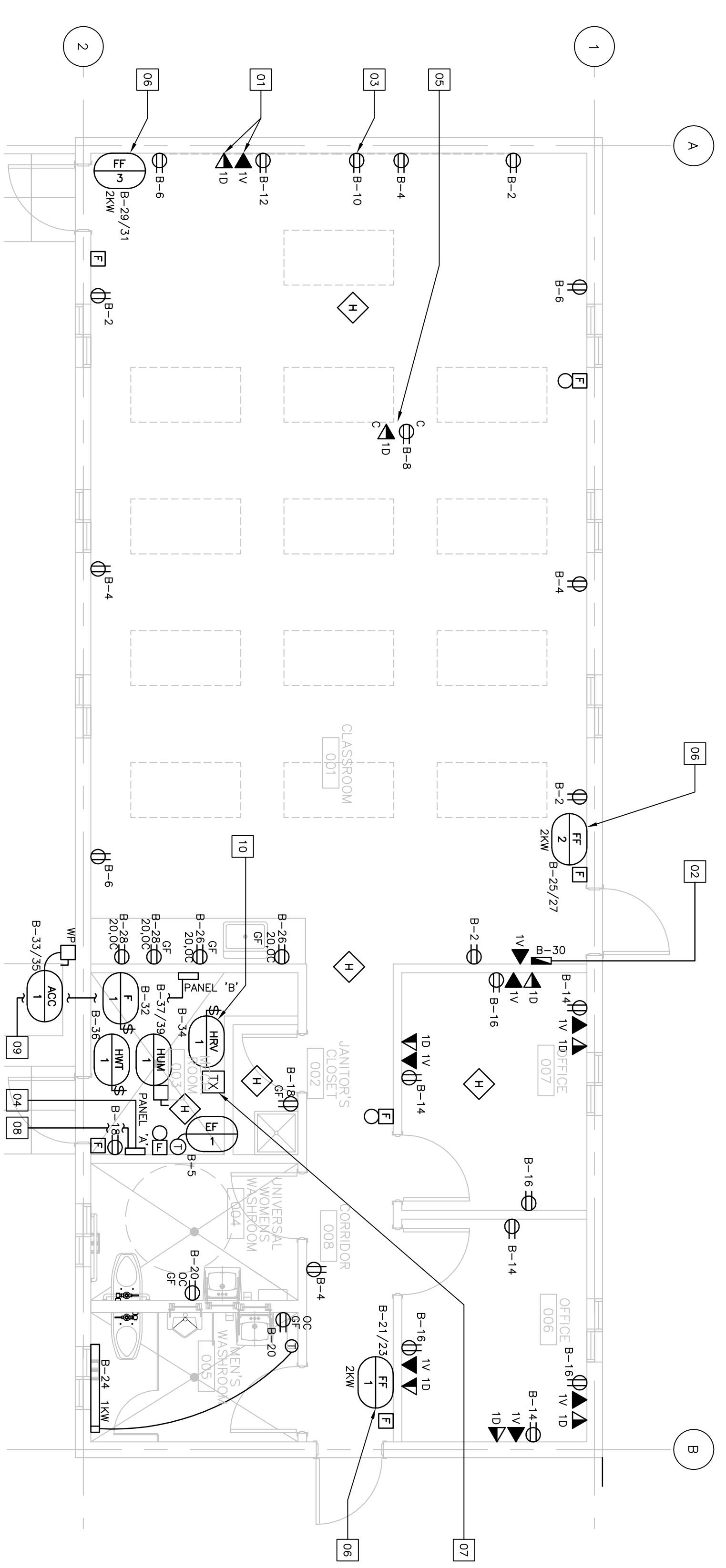
Verify all dimensions and conditions on site and immediately notify the Departmental Representative of all discrepancies.

	A	B	C
Detail No.			
No. du détail			
— where detail required			
dessin no. — ou détail exigé			
— where detailed			
dessin no. — ou détaillé			

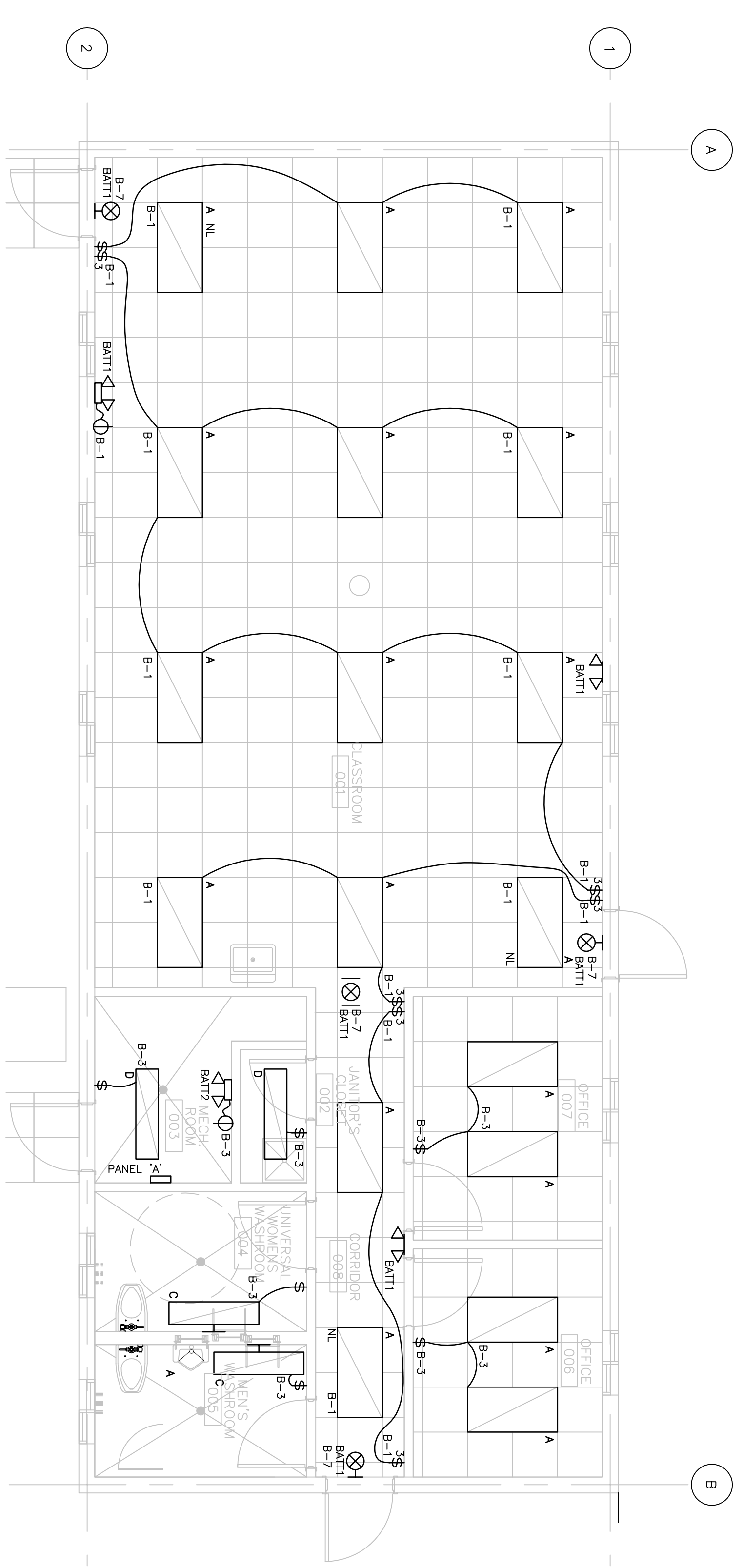
Gravenhurst Ontario
Correctional Service of Canada
Fenbrook Institution
12000 Beaver Creek Drive,
FENBROOK INSTITUTION
FIRING RANGE & TRAINING BUILDING

drawing title
titre du dessin

**TRAINING BUILDING
ELECTRICAL LIGHTING,
POWER & SYSTEMS LAYOUTS**

[illegible]

2 POWER & SYSTEMS LAYOUT
- E220 1:50



1 LIGHTING LAYOUT

SYMBOL	ELECTRICAL LEGEND
	LIGHTING
	WALL LIGHT
	CEILING OR PENDANT MOUNTED FLUORESCENT LIGHT
	N = UNSWITCHED NIGHT LIGHT
	WALL MOUNTED FLUORESCENT LIGHT FUTURE 3 = 3-WAY
	LIGHT SWITCH S = 3-WAY
	EXIT SIGN - CEILING MOUNTED, DOUBLE FACE
	EMERGENCY LIGHTING BATTERY PACK WITH PLUG CORD AND RECEPTACLE AND 2 LAMP LAMP HEADS
	POWER AND CONTROL
	SURFACE MOUNTED PANELBOARD
	DUPLEX RECEPTACLE
	DIRECT CONNECTION
	ELECTRIC BASEBOARD HEATER
	WATTAGE AS INDICATED
	LINE VOLTAGE THERMOSTAT
	CONNECTION TO MECHANICAL EQUIPMENT
	HWT = HOT WATER TANK
	ACC = ACCUMULATOR
	HRV = HEAT RECOVERY VENTILATOR
	FF = FORCE FLOW HEATER
	I# = IDENTIFICATION NUMBER
	FIRE ALARM
	FIRE ALARM PULL STATION
	FIRE ALARM HEAT DETECTOR
	FIRE ALARM BELL
	MAIN FIRE ALARM CONTROL PANEL
	SECURITY
	ELECTROMAGNETIC LOCK
	EMERGENCY MANUAL PULL STATION
	TELECOMMUNICATIONS
	TELEPHONE OUTLET
	DATA OUTLET

- 01 TYPICAL ONE (1) 27mm CONCEALED CONDUIT FROM OUTLET BOX TO CEILING SPACE FOR EACH TELEPHONE AND DATA ROUTE TO PLUMBING CONCEALED WITH PLASTIC GROUND Slicing
- 02 CONDUIT WITH OUTLET TUBE CABLE TO BUILDING ROX FOR FIBRE PLASM SYSTEM TUBE. REFER TO DRAWING E-1-2 FOR PLACING CABLE.
- 03 PENDING ONE (1) DUPLEX RECEPTACLE AT 255mm A.F. FOR ELECTRIC CLOCK.
- 04 PROVIDE MAIN SERVICE FEEDERS FROM ROX AND MOUNTED EXACT ROUTING OF FEEDERS.
- 05 PROVIDE RECEPTACLE AND DATA OUTLET FOR OVERHEAD PLUMBING CONCEALED WITH PLASTIC GROUND Slicing EXACT LOCATION WITH ADB/SMILE EQUIPMENT INSTALLER.
- 06 PROVIDE XAN 200V/50VA PHASE FORCE FLOW HEATER C/W BUILT-IN THERMOSTAT.
- 07 PROVIDE 5A/50 100-120/180V 3-PHASE DELTA-TO-WYE TRANSFORMER CONNECTED PRIMARY TO CIRCUIT IN PANEL AT AS PER DRAWING E-1-2. SECONDARY TO 200V/50VA PLASMA SYSTEM WITH 420V/0.04-ohmic. INSTALL TRANSFORMER BELOW HMI-1.
- 08 PROVIDE X1/2(1/4W) TCCO TO FIBRE RANGE FOR LAMING. TERMINATE ONE CABLE AT SWITCH AND ONE CABLE AT E-202 FOR LOCATION OF SWITCHES. REFER TO DRAWING E-1-1 FOR ROUTING AND TRENCHING DETAILS.
- 09 PROVIDE X1/2(1/4W) TCCO TO FIBRE RANGE FOR CABLE AT SWITCH AND ONE CABLE AT SWITCH 4 AND ONE CABLE AT E-202 FOR LOCATION OF SWITCHES. REFER TO DRAWING E-1-2 FOR ROUTING AND TRENCHING DETAILS. REFER TO DRAWING E-1-2 FOR LOCATION OF DATA ROUTES.
- 10 TYPICAL REFER TO M232 FOR MECHANICAL EQUIPMENT INSTALLED.

FIRE ALARM ZONE LIST	
ZONE ID	DESCRIPTION
TB-201	MECHANICAL ROOM
TB-202	WASHROOMS, OFFICES, CLASSROOM CORRIDOR AND JANITOR'S CLOSET

CCT	No.	•	LOAD DESCRIPTION	VOLT-AMPS			BREAKER			VOLT-AMPS			LOAD DESCRIPTION	CCT	No.	•
				A	B	C	A	B	C	A	B	C				
1	3	•	29 KW	10	15	1	4050	—	—	—	—	—	RANGE LIGHTS (SWITCH a)	2		
1	5	•	29 KW	10	15	1	3700	—	—	—	—	—	RANGE LIGHTS (SWITCH b)	4		
1	7	•	29 KW	12	15	1	500	—	—	—	—	—	BULLET TRAP LIGHTS (SWITCH a)	8		
1	9	•	29 KW	12	15	1	—	X	—	—	—	—	SPARE	5		
1	12	•	29 KW	12	15	1	—	—	—	—	X	—	SPARE	12		

[illegible]

COG #	COG *	LOAD DESCRIPTION	A	B	C	LOAD DESCRIPTION	COG #							
1	1	INTERIOR LIGHTING	910	1	15	12	15	1	500	—	—	—	GENERAL RECEPTACLES	2
3	3	INTERIOR LIGHTING	470	—	1	15	12	15	1	400	—	—	GENERAL RECEPTACLES	4
5	FF-1	FF-1	—	175	1	15	12	15	1	400	—	—	GENERAL RECEPTACLES	6
7	7	EXIT SIGNS	35	—	1	15	12	15	1	500	—	—	O/H PROTECTOR	8
9	9	EXTERIOR LIGHTING	300	—	1	20	6	12	15	1	250	—	CLOCK	8
11	11	EXTERIOR LIGHTING	500	—	1	20	6	12	15	1	250	—	WHITE BOARD	12
13	13	EXTERIOR LIGHTING	500	—	1	20	6	12	15	1	750	—	OFFICE RECEPTACLES	14
15	15	SPRINK CIRCUIT - FINING RANGE	X	—	1	15	12	15	1	750	—	OFFICE RECEPTACLES	16	
17	17	SPRINK CIRCUIT - FINING RANGE	—	X	1	15	12	15	1	500	—	SERVICE & JANITOR RM RECEPTS	20	
19	19	SPRINK CIRCUIT - FINING RANGE	—	—	1	15	12	15	1	250	—	WASHROOM RECEPTACLES	18	
21	21	FF-1	2 KW	—	2	15	12	15	1	X	—	SPACE	22	
23	23	FF-2	2 KW	—	2	15	12	15	1	1500	—	WASHROOM BASEBOARD HEATER	24	
25	25	FF-3	2 KW	—	2	15	12	15	1	1500	—	KITCHENETTE COC RECEPTACLES	26	
27	27	FF-3	2 KW	—	2	15	12	15	1	1500	—	KITCHENETTE COC RECEPTACLES	28	
29	29	FF-3	2 KW	—	2	15	12	15	1	500	—	PURE ALUM. PANEL	30	
31	31	FF-3	2 KW	—	2	15	12	15	1	1200	—	FLUORESC. FF-1	32	
33	33	FF-3	2 KW	—	2	15	12	15	1	500	—	HOT-1	34	
35	35	FF-3	2 KW	—	2	15	12	15	1	500	—	HOT-1	36	
37	37	FF-3	2 KW	—	2	15	12	15	1	100	—	BUNK SLEEPING QUART. DRY W/ LOCK	38	
39	39	FF-3	2 KW	—	2	15	12	15	1	750	—	BUNK SLEEPING QUART. DRY W/ LOCK	40	
41	41	FF-3	2 KW	—	2	15	12	15	1	750	—	BUNK SLEEPING QUART. DRY W/ LOCK	42	
43	43	FF-3	2 KW	—	2	15	12	15	1	750	—	BUNK SLEEPING QUART. DRY W/ LOCK	44	
45	45	FF-3	2 KW	—	2	15	12	15	1	750	—	BUNK SLEEPING QUART. DRY W/ LOCK	46	
47	47	FF-3	2 KW	—	2	15	12	15	1	750	—	BUNK SLEEPING QUART. DRY W/ LOCK	48	
49	49	FF-3	2 KW	—	2	15	12	15	1	750	—	BUNK SLEEPING QUART. DRY W/ LOCK	50	
51	51	FF-3	2 KW	—	2	15	12	15	1	750	—	BUNK SLEEPING QUART. DRY W/ LOCK	52	
53	53	FF-3	2 KW	—	2	15	12	15	1	750	—	BUNK SLEEPING QUART. DRY W/ LOCK	54	
55	55	FF-3	2 KW	—	2	15	12	15	1	750	—	BUNK SLEEPING QUART. DRY W/ LOCK	56	
57	57	FF-3	2 KW	—	2	15	12	15	1	750	—	BUNK SLEEPING QUART. DRY W/ LOCK	58	
59	59	FF-3	2 KW	—	2	15	12	15	1	750	—	BUNK SLEEPING QUART. DRY W/ LOCK	60	