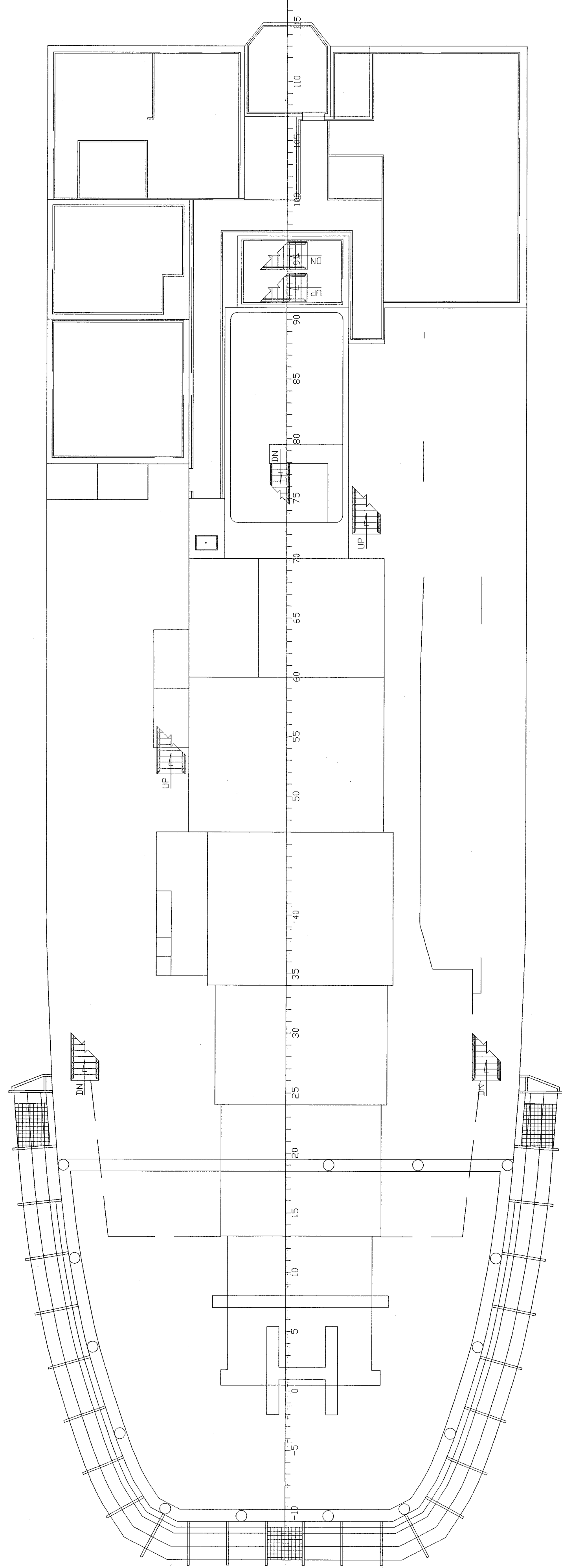
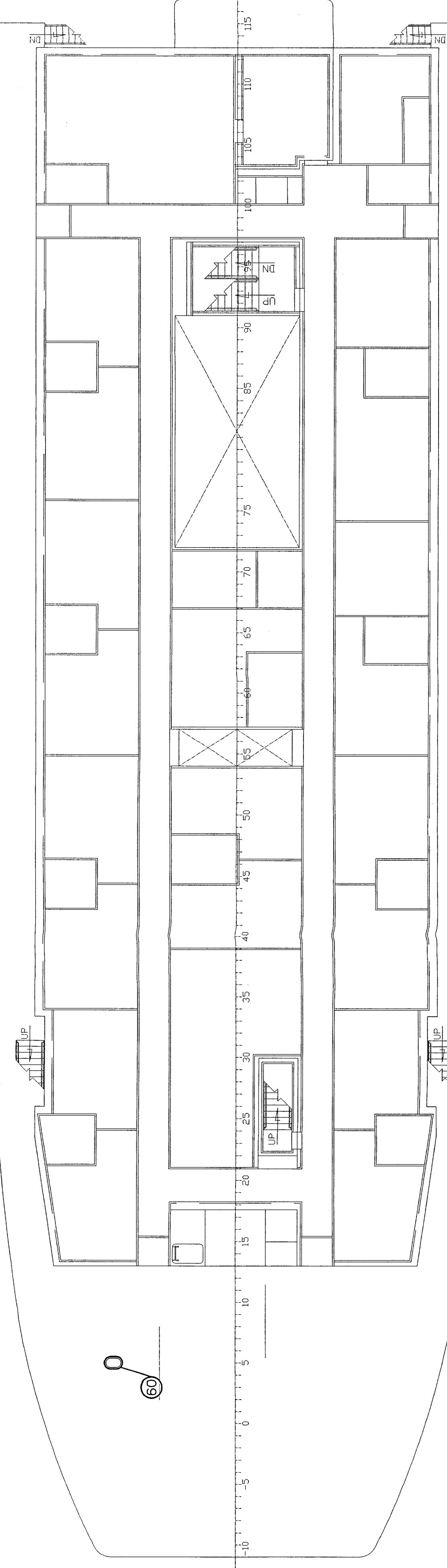


WHEELHOUSE FLOOR AFT FR 95

OFFICERS DECK



BOAT DECK



UPPER DECK

LIST OF MANHOLES						
NO.	TYPE OR REF NO.	COMPARTMENT	UNIT	FWD OR AFT	LOCATION OF MANHOLE CENTER	
					PORT OR STBD	COVER THKS
1	DRG S-C-1	WASTE OIL TANK	700 FRM 37		1562 OFF & STBD	12mm
2	DRG S-C-1	ONLY BULGE TANK	700 FRM 37		1562 OFF & STBD	12mm
3	DRG S-C-2A	NO. 2 D.B. WATER BALLAST PORT	100 525 PWD FRM 54		TANK TOP	10mm
4	DRG S-C-2A	NO. 2 D.B. WATER BALLAST PORT	100 525 PWD FRM 54		TANK TOP	10mm
5	DRG S-C-2A	NO. 2 D.B. WATER BALLAST PORT	100 525 PWD FRM 54		TANK TOP	10mm
6	DRG S-C-2A	NO. 2 D.B. WATER BALLAST PORT	100 525 PWD FRM 54		TANK TOP	10mm
7	DRG S-C-2A	NO. 9 FUEL OIL PORT	101 450 PWD FRM 72		TANK TOP	10mm
8	DRG S-C-2A	NO. 10 FUEL OIL STBD	101 450 PWD FRM 72		TANK TOP	10mm
9	DRG S-C-2A	NO. 11 FUEL OIL STBD	101 450 PWD FRM 72		TANK TOP	10mm
10	DRG S-C-2A	NO. 12 FUEL OIL STBD	101 450 PWD FRM 72		TANK TOP	10mm
11	DRG S-C-2A	NO. 13 FUEL OIL STBD	101 450 PWD FRM 72		TANK TOP	10mm
12	DRG S-C-2A	NO. 14 FUEL OIL STBD	101 450 PWD FRM 72		TANK TOP	10mm
13	DRG S-C-2A	NO. 15 FUEL OIL STBD	101 450 PWD FRM 72		TANK TOP	10mm
14	DRG S-C-2A	NO. 16 FUEL OIL STBD	101 450 PWD FRM 72		TANK TOP	10mm
15	DRG S-C-2A	NO. 17 FUEL OIL STBD	101 450 PWD FRM 72		TANK TOP	10mm
16	DRG S-C-2A	NO. 18 FUEL OIL STBD	101 450 PWD FRM 72		TANK TOP	10mm
17	DRG S-C-2A	NO. 19 FUEL OIL STBD	101 450 PWD FRM 72		TANK TOP	10mm
18	DRG S-C-2A	NO. 20 FUEL OIL STBD	101 450 PWD FRM 72		TANK TOP	10mm
19	DRG S-C-2A	NO. 21 FUEL OIL STBD	101 450 PWD FRM 72		TANK TOP	10mm
20	DRG S-C-2A	NO. 22 FUEL OIL STBD	101 450 PWD FRM 72		TANK TOP	10mm
21	DRG S-C-2A	NO. 23 FUEL OIL STBD	101 450 PWD FRM 72		TANK TOP	10mm
22	DRG S-C-2A	NO. 24 FUEL OIL STBD	101 450 PWD FRM 72		TANK TOP	10mm
23	DRG S-C-2A	NO. 25 FUEL OIL STBD	101 450 PWD FRM 72		TANK TOP	10mm
24	DRG S-C-2A	NO. 26 FUEL OIL STBD	101 450 PWD FRM 72		TANK TOP	10mm
25	DRG S-C-2A	NO. 27 FUEL OIL STBD	101 450 PWD FRM 72		TANK TOP	10mm
26	DRG S-C-2A	NO. 28 FUEL OIL STBD	101 450 PWD FRM 72		TANK TOP	10mm
27	DRG S-C-2A	NO. 29 FUEL OIL STBD	101 450 PWD FRM 72		TANK TOP	10mm
28	DRG S-C-2A	NO. 30 FUEL OIL STBD	101 450 PWD FRM 72		TANK TOP	10mm
29	DRG S-C-2A	NO. 31 FUEL OIL STBD	101 450 PWD FRM 72		TANK TOP	10mm
30	DRG S-C-2A	NO. 32 FUEL OIL STBD	101 450 PWD FRM 72		TANK TOP	10mm
31	DRG S-C-2A	NO. 33 FUEL OIL STBD	101 450 PWD FRM 72		TANK TOP	10mm
32	DRG S-C-2A	NO. 34 FUEL OIL STBD	101 450 PWD FRM 72		TANK TOP	10mm
33	DRG S-C-2A	NO. 35 FUEL OIL STBD	101 450 PWD FRM 72		TANK TOP	10mm
34	DRG S-C-2A	NO. 36 FUEL OIL STBD	101 450 PWD FRM 72		TANK TOP	10mm
35	DRG S-C-2A	NO. 37 FUEL OIL STBD	101 450 PWD FRM 72		TANK TOP	10mm
36	DRG S-C-2A	NO. 38 FUEL OIL STBD	101 450 PWD FRM 72		TANK TOP	10mm
37	DRG S-C-2A	NO. 39 FUEL OIL STBD	101 450 PWD FRM 72		TANK TOP	10mm
38	DRG S-C-2A	NO. 40 FUEL OIL STBD	101 450 PWD FRM 72		TANK TOP	10mm
39	DRG S-C-2A	NO. 41 FUEL OIL STBD	101 450 PWD FRM 72		TANK TOP	10mm
40	DRG S-C-2A	NO. 42 FUEL OIL STBD	101 450 PWD FRM 72		TANK TOP	10mm
41	DRG S-C-2A	NO. 43 FUEL OIL STBD	101 450 PWD FRM 72		TANK TOP	10mm
42	DRG S-C-2A	NO. 44 FUEL OIL STBD	101 450 PWD FRM 72		TANK TOP	10mm
43	DRG S-C-2A	NO. 45 FUEL OIL STBD	101 450 PWD FRM 72		TANK TOP	10mm
44	DRG S-C-2A	NO. 46 FUEL OIL STBD	101 450 PWD FRM 72		TANK TOP	10mm
45	DRG S-C-2A	NO. 47 FUEL OIL STBD	101 450 PWD FRM 72		TANK TOP	10mm
46	DRG S-C-2A	NO. 48 FUEL OIL STBD	101 450 PWD FRM 72		TANK TOP	10mm
47	DRG S-C-2A	NO. 49 FUEL OIL STBD	101 450 PWD FRM 72		TANK TOP	10mm
48	DRG S-C-2A	NO. 50 FUEL OIL STBD	101 450 PWD FRM 72		TANK TOP	10mm
49	DRG S-C-2A	NO. 51 FUEL OIL STBD	101 450 PWD FRM 72		TANK TOP	10mm
50	DRG S-C-2A	NO. 52 FUEL OIL STBD	101 450 PWD FRM 72		TANK TOP	10mm
51	DRG S-C-2A	NO. 53 FUEL OIL STBD	101 450 PWD FRM 72		TANK TOP	10mm
52	DRG S-C-2A	NO. 54 FUEL OIL STBD	101 450 PWD FRM 72		TANK TOP	10mm
53	DRG S-C-2A	NO. 55 FUEL OIL STBD	101 450 PWD FRM 72		TANK TOP	10mm
54	DRG S-C-2A	NO. 56 FUEL OIL STBD	101 450 PWD FRM 72		TANK TOP	10mm
55	DRG S-C-2A	NO. 57 FUEL OIL STBD	101 450 PWD FRM 72		TANK TOP	10mm
56	DRG S-C-2A	NO. 58 FUEL OIL STBD	101 450 PWD FRM 72		TANK TOP	10mm
57	DRG S-C-2A	NO. 59 FUEL OIL STBD	101 450 PWD FRM 72		TANK TOP	10mm
58	DRG S-C-2A	NO. 60 FUEL OIL STBD	101 450 PWD FRM 72		TANK TOP	10mm
59	DRG S-C-2A	NO. 61 FUEL OIL STBD	101 450 PWD FRM 72		TANK TOP	10mm
60	DRG S-C-2A	NO. 62 FUEL OIL STBD	101 450 PWD FRM 72		TANK TOP	10mm
61	DRG S-C-2A	NO. 63 FUEL OIL STBD	101 450 PWD FRM 72		TANK TOP	10mm
62	DRG S-C-2A	NO. 64 FUEL OIL STBD	101 450 PWD FRM 72		TANK TOP	10mm
63	DRG S-C-2A	NO. 65 FUEL OIL STBD	101 450 PWD FRM 72		TANK TOP	10mm
64	DRG S-C-2A	NO. 66 FUEL OIL STBD	101 450 PWD FRM 72		TANK TOP	10mm
65	DRG S-C-2A	NO. 67 FUEL OIL STBD	101 450 PWD FRM 72		TANK TOP	10mm
66	DRG S-C-2A	NO. 68 FUEL OIL STBD	101 450 PWD FRM 72		TANK TOP	10mm
67	DRG S-C-2A	NO. 69 FUEL OIL STBD	101 450 PWD FRM 72		TANK TOP	10mm
68	DRG S-C-2A	NO. 70 FUEL OIL STBD	101 450 PWD FRM 72		TANK TOP	10mm
69	DRG S-C-2A	NO. 71 FUEL OIL STBD	101 450 PWD FRM 72		TANK TOP	10mm
70	DRG S-C-2A	NO. 72 FUEL OIL STBD	101 450 PWD FRM 72		TANK TOP	10mm
71	DRG S-C-2A	NO. 73 FUEL OIL STBD	101 450 PWD FRM 72		TANK TOP	10mm
72	DRG S-C-2A	NO. 74 FUEL OIL STBD	101 450 PWD FRM 72		TANK TOP	10mm
73	DRG S-C-2A	NO. 75 FUEL OIL STBD	101 450 PWD FRM 72		TANK TOP	10mm
74	DRG S-C-2A	NO. 76 FUEL OIL STBD	101 450 PWD FRM 72		TANK TOP	10mm
75	DRG S-C-2A	NO. 77 FUEL OIL STBD	101 450 PWD FRM 72		TANK TOP	10mm

NOTE: MANHOLE NOT TO BE USED

DRAWING REDRAWN TO CAD		JUL/4/02	
NOTE ADDED TO MANHOLE NO. 44 AS PER USS-051		07-01-87	
MANHOLE NO. 75 TO NO. 4		19-12-86	
VOID PORT ADDED FOR ACCESS		04-12-86	
CHANGED AND ADDITIONAL TANK INFO ADDED		10-12-86	
ADDED MANHOLE NO. 74 AT BHD FRAME 152		06-08-85	
REVISED HEIGHT OF MANHOLES 68 TO 71		28-07-85	
REMOVED MANHOLE NO. 74		22-07-84	
ADDED MANHOLES NO. 73 AND 74		13-06-86	
REVISED TO LLOYDS APPROVAL COMMENTS		06-06-85	
ADDED MANHOLES NO. 64,65,66,67,68,69,70,71 & 72			

#138

7	REDRAWN TO CAD	07/04/02	R.R.B.
7	REDRAWN TO CAD	07/04/02	R.R.B.

Drawn - date	Checked - verified	Designed - approved	Permitted - approved
JUL/4/02	R.R. BURTON		
Scale - estimate	project no. -	sheet no. -	total sheets -
1:100	A0	72-60A-2	2/2