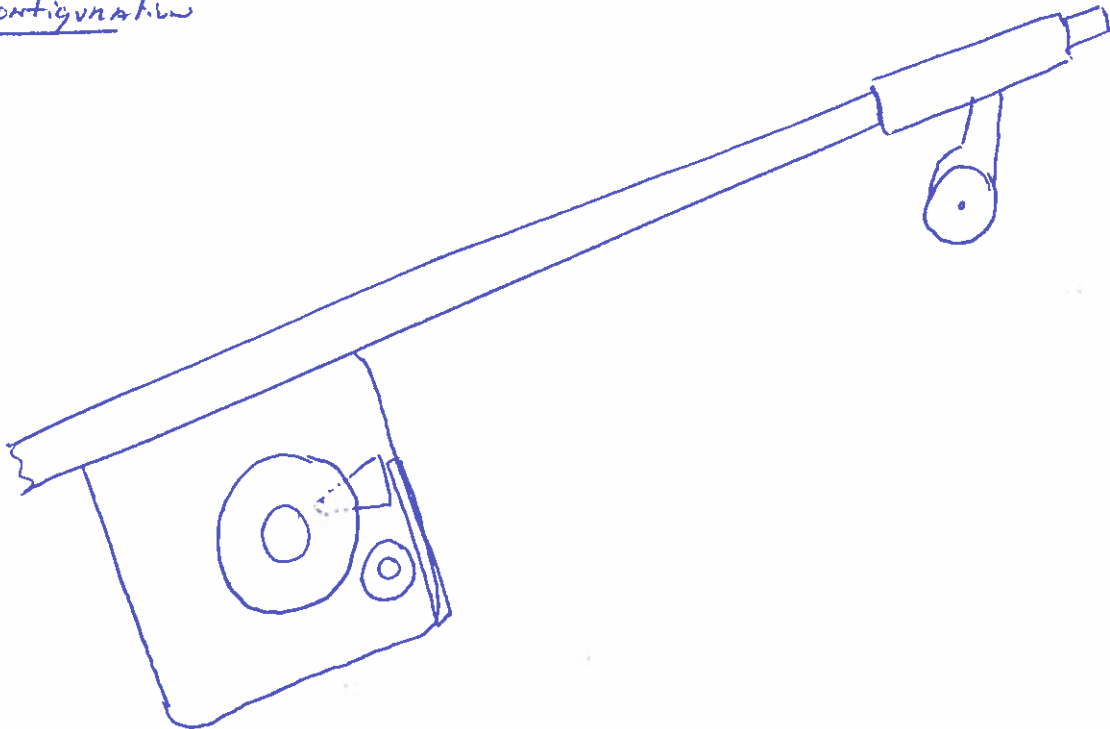
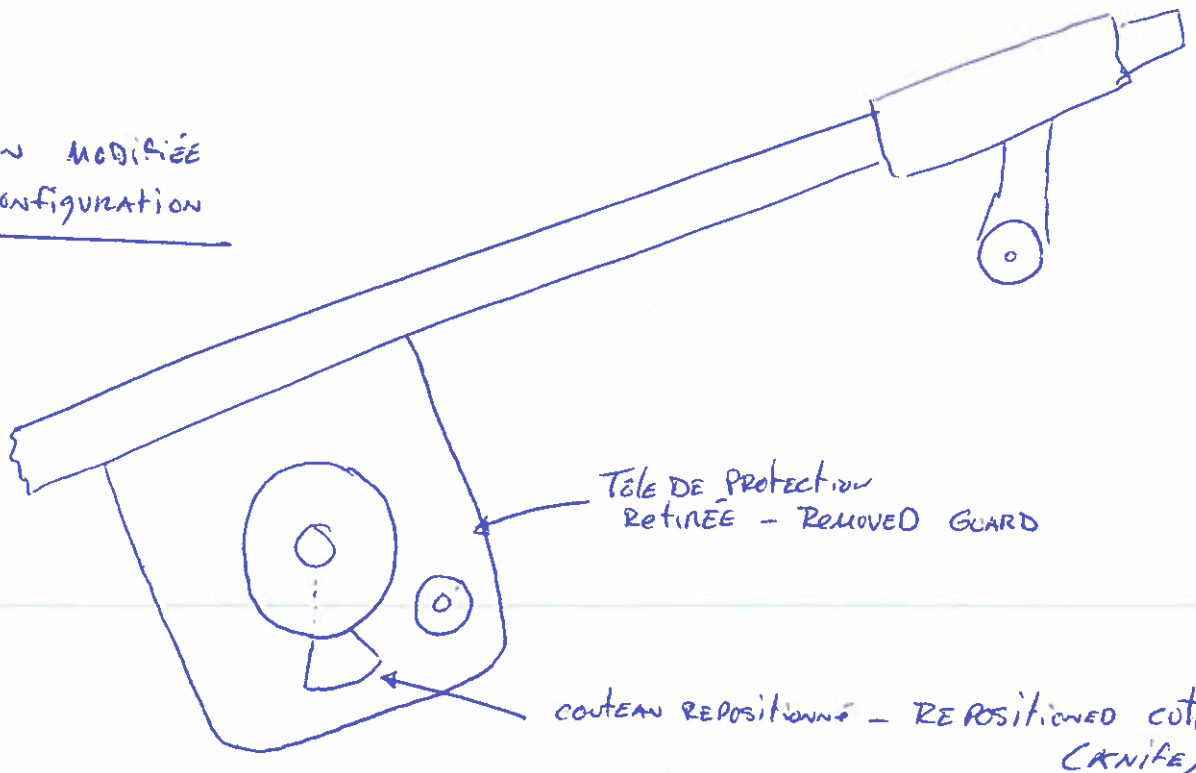


CROQUIS "A1"
"A1" SKETCH

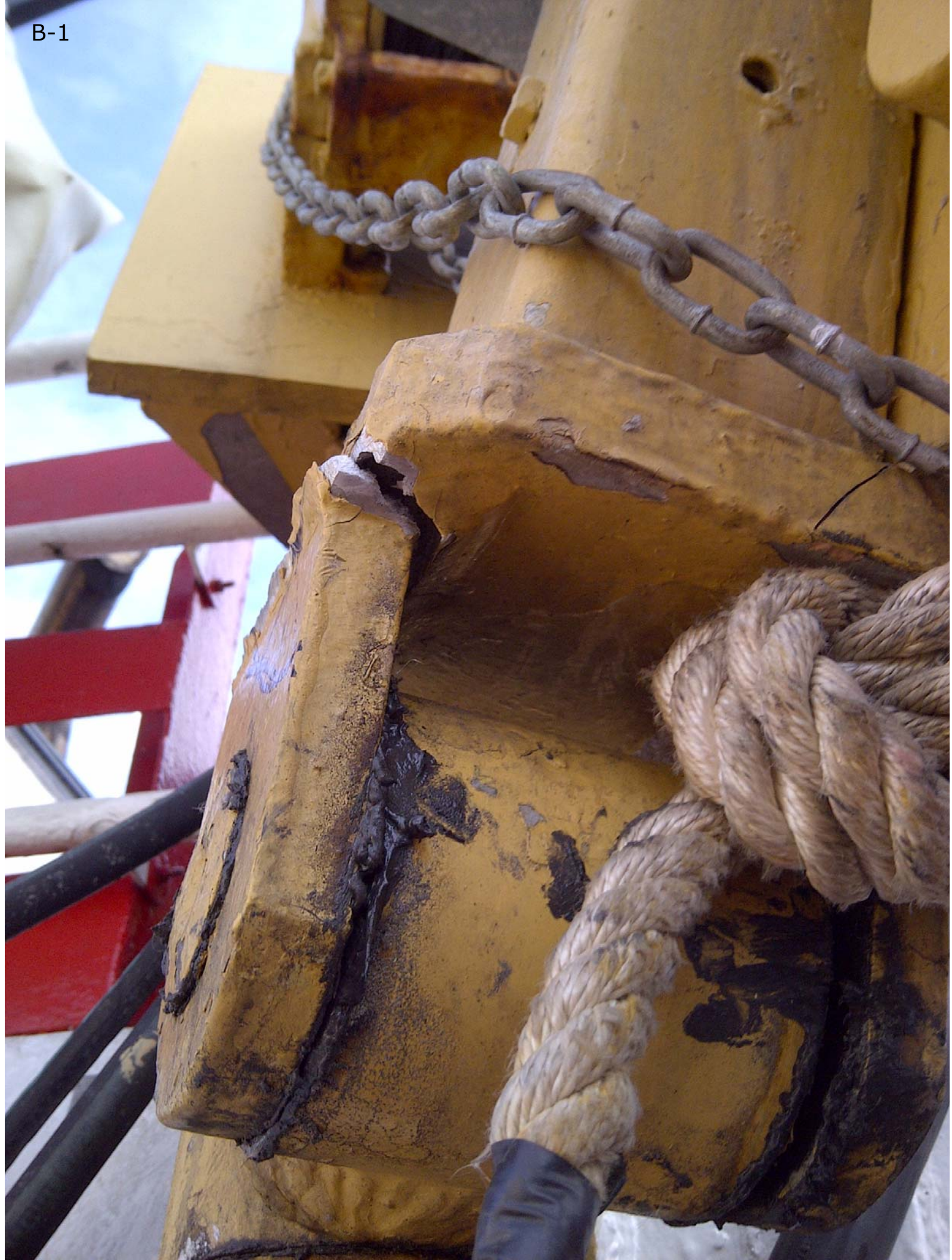
CONFIGURATION ACTUELLE
ACTUAL CONFIGURATION



CONFIGURATION MODIFIÉE
MODIFIED CONFIGURATION



B-1



B-2



haleur #1





haleur filet



**PRODUCT
DESCRIPTION**

A one component, high build alkyd primer containing anticorrosive pigment.

INTENDED USES

For use as a general purpose maintenance primer primarily for the bridge market, for application to correctly prepared steel.

**PRACTICAL
INFORMATION FOR
INTERPRIME 234**

Colour	Red, Off White, Grey
Gloss Level	Matt
Volume Solids	58% ± 2%
Typical Thickness	38-89 microns (1.5-3.6 mils) dry equivalent to 66-153 microns (2.6-6.1 mils) wet
Theoretical Coverage	11.60 m ² /litre at 50 microns d.f.t and stated volume solids 465 sq.ft/US gallon at 2 mils d.f.t and stated volume solids
Practical Coverage	Allow appropriate loss factors
Method of Application	Airless Spray, Roller, Brush, Conventional Spray

Drying Time

Temperature	Touch Dry	Hard Dry	Overcoating Interval with recommended topcoats	
			Minimum	Maximum
5°C (41°F)	2 hours	16 hours	20 hours	Extended ¹
10°C (50°F)	2 hours	12 hours	12 hours	Extended ¹
25°C (77°F)	90 minutes	6 hours	6 hours	Extended ¹
35°C (95°F)	30 minutes	5 hours	5 hours	Extended ¹

¹ See International Protective Coatings Definitions and Abbreviations

REGULATORY DATA

Flash Point	37°C (99°F)	
Product Weight	1.51 kg/l (12.6 lb/gal)	
VOC	2.83 lb/gal (340 g/lit)	EPA Method 24

See Product Characteristics section for further details

Protective Coatings

**SURFACE
PREPARATION**

All surfaces to be coated should be clean, dry and free from contamination. Prior to paint application all surfaces should be assessed and treated in accordance with ISO 8504:2000.

Steel Substrates

All bare steel surfaces should be cleaned by hand or power tool methods to SSPC SP2 or SSPC SP3. Care should be taken to avoid polishing the steel when using power tool methods.

Previously Painted Surfaces

Thoroughly clean and degrease. Remove all loose or flaking coatings, loose rust or other surface contamination using hand or power tool methods, to achieve SSPC SP2 or SSPC SP3 on bare areas.

APPLICATION

Mixing	This material is a one component coating and should always be mixed thoroughly with a power agitator before application.		
Airless Spray	Recommended	Tip Range 0.475-0.533 mm (19-21 thou) Total output fluid pressure at spray tip not less than 141 kg/cm ² (2005 p.s.i.)	
Air Spray (Conventional)	Recommended	Gun	DeVilbiss MBC-510
		Air Cap	704
		Fluid Tip	E
Brush	Suitable		
Roller	Suitable	Use a short nap roller.	
Thinner	International GTA004	Not normally required. Do not thin more than allowed by local environmental legislation	
Cleaner	International GTA004		
Work Stoppages	Do not allow material to remain in hoses, gun or spray equipment. Thoroughly flush all equipment with International GTA004. Once units of paint have been mixed they should not be resealed and it is advised that after prolonged stoppages work recommences with freshly mixed units.		
Clean Up	Clean all equipment immediately after use with GTA004. It is good working practice to periodically flush out spray equipment during the course of the working day. Frequency of cleaning will depend upon amount sprayed, temperature and elapsed time, including any delays.		
	All surplus materials and empty containers should be disposed of in accordance with appropriate regional regulations/legislation.		

**PRODUCT
CHARACTERISTICS**

Apply in good climatic conditions. The temperature of the surface to be coated must be at least 3°C (5°F) above the dew point. Curing will be retarded if air and surface temperatures are below 5°C (41°F).

Unmixed material (in closed containers) should be maintained in protected storage in accordance with information given in the Storage section of this datasheet.

When used as part of an approved scheme, this material has the following certification:

- Fire Resistance - Surface Spread of Flame (WFR) - (IMO Resolution A653 (16))
- Fire Resistance - MSC61 (67) Smoke Toxicity (WFR)

Note: VOC values are typical and are provided for guidance purpose only. These may be subject to variation depending on factors such as differences in colour and normal manufacturing tolerances.

**SYSTEMS
COMPATIBILITY**

Interprime 234 may be overcoated with itself or the following topcoats;

Interlac 665
Interlac 800
Interprime 234

**ADDITIONAL
INFORMATION**

Further information regarding industry standards, terms and abbreviations used in this data sheet can be found in the following documents available at www.international-pc.com:

- Definitions Abbreviations
- Surface Preparation
- Paint Application
- Theoretical Practical Coverage

Individual copies of these information sections are available upon request.

**SAFETY
PRECAUTIONS**

This product is intended for use only by professional applicators in industrial situations in accordance with the advice given on this sheet, the Material Safety Data Sheet and the container(s), and should not be used without reference to the Material Safety Data Sheet (MSDS) which International Protective Coatings has provided to its customers.

All work involving the application and use of this product should be performed in compliance with all relevant national, Health, Safety & Environmental standards and regulations.

In the event welding or flame cutting is performed on metal coated with this product, dust and fumes will be emitted which will require the use of appropriate personal protective equipment and adequate local exhaust ventilation.

If in doubt regarding the suitability of use of this product, consult International Protective Coatings for further advice.

PACK SIZE	Unit Size	Vol	Pack
	1 US gal	1 US gal	1 US gal
	5 US gal	5 US gal	5 US gal
For availability of other pack sizes, contact International Protective Coatings.			
SHIPPING WEIGHT	Unit Size		
	1 US gal	14 lb	
	5 US gal	64.6 lb	
STORAGE	Shelf Life	24 months minimum at 4-38°C (40-100°F). Subject to re-inspection thereafter. Store in dry, shaded conditions away from sources of heat and ignition.	

Important Note

The information in this data sheet is not intended to be exhaustive; any person using the product for any purpose other than that specifically recommended in this data sheet without first obtaining written confirmation from us as to the suitability of the product for the intended purpose does so at their own risk. All advice given or statements made about the product (whether in this data sheet or otherwise) is correct to the best of our knowledge but we have no control over the quality or the condition of the substrate or the many factors affecting the use and application of the product. Therefore, unless we specifically agree in writing to do so, we do not accept any liability at all for the performance of the product or for (subject to the maximum extent permitted by law) any loss or damage arising out of the use of the product. We hereby disclaim any warranties or representations, express or implied, by operation of law or otherwise, including, without limitation, any implied warranty of merchantability or fitness for a particular purpose. All products supplied and technical advice given are subject to our Conditions of Sale. You should request a copy of this document and review it carefully. The information contained in this data sheet is liable to modification from time to time in the light of experience and our policy of continuous development. It is the user's responsibility to check with their local International Paint representative that this data sheet is current prior to using the product.

Copyright © AkzoNobel, 09/03/2010.

International, International and all product names mentioned in this publication are trademarks of, or licensed to, AkzoNobel.
www.international-pc.com

PRODUCT DESCRIPTION A one pack alkyd gloss finish.

INTENDED USES For use as an easily maintained cosmetic finish coat on areas above the waterline.
For use at Newbuilding, Maintenance & Repair or On Board Maintenance.

PRODUCT INFORMATION

Colour	CLB000-White, CLD260-Intl. Orange, CLK724-Storm Grey, CLL274-Red, CLL549-Signal Green, CLY999-Black; and a wide range of colours.
Finish/Sheen	High Gloss
Part B (Curing Agent)	Not applicable
Volume Solids	48% \pm 3% (ISO 3233:1998)
Typical Film Thickness	40 microns dry (83 microns wet)
Theoretical Coverage	12.00 m ² /litre at 40 microns dft, allow appropriate loss factors
Method of Application	Airless Spray, Brush, Conventional Spray, Roller
Flash Point	Single Pack 40°C (Product produced and supplied in North America has a flashpoint of 41°C due to locally sourced solvents. There is no detrimental effect on product performance.)

Drying Information		5°C		10°C		25°C		35°C	
Touch Dry [ISO 1517:73]		18 hrs		14 hrs		6 hrs		5 hrs	
Hard Dry [ISO 9117:90]		62 hrs		48 hrs		24 hrs		12 hrs	
Overcoating Data - see limitations									
		Substrate Temperature							
		5°C		10°C		25°C		35°C	
Overcoated By		Min	Max	Min	Max	Min	Max	Min	Max
Interlac 665		36 hrs	ext	24 hrs	ext	24 hrs	ext	16 hrs	ext

REGULATORY DATA

VOC	420 g/l as supplied (EPA Method 24) 364 g/kg of liquid paint as supplied. EU Solvent Emissions Directive (Council Directive 1999/13/EC)
------------	--

Note: VOC values are typical and are provided for guidance purposes only. These may be subject to variation depending on factors such as differences in colour and normal manufacturing tolerances.

CERTIFICATION

When used as part of an approved scheme, this material has the following certification:

- Fire Resistance - Surface Spread of Flame (WFR) - (IMO Resolution A653 (16))
- Fire Resistance - Surface Spread of Flame (Korean Register of Shipping)
- Fire Resistance - MSC61(67) Smoke & Toxicity (WFR)
- Fire Resistance - Marine Equipment Directive compliant
- Food Contact - Carriage of Grain (NOHA)
- Meets Petrobras Standard N-2492 - Alkyd Finish Gloss

Consult your International Paint representative for details.

**SYSTEMS AND
COMPATIBILITY**

Interlac 665 should only be applied over recommended anticorrosive primers. The primer to be used will depend upon vessel area, existing coatings, coating condition and application location. Typical primers include:

Interprime 198
Intertuf 203
Interprime 128 (in Europe)
Interprime 222 (in South America)
Interprime 234 (in North America)
Interprime 538 (in Europe)
Interlac 497 (applied as a sympathetically coloured undercoat over Interprime 198)

In the Americas, Interlac 665 may also be applied over epoxy primers or epoxy tie coats. Consult International Paint.

Consult your International Paint representative for the system best suited for the surfaces to be protected.

SURFACE PREPARATIONS

Use in accordance with the standard Worldwide Marine Specifications.

All surfaces to be coated should be clean, dry and free from contamination.

High pressure fresh water wash or fresh water wash, as appropriate, and remove all oil or grease, soluble contaminants and other foreign matter in accordance with SSPC-SP1 solvent cleaning.

NEWBUILDING/MAJOR REFURBISHMENT

Interlac 665 should always be applied over a recommended primer coating scheme. The primer surface should be dry and free from all contamination, and Interlac 665 must be applied within the overcoating intervals specified (consult the relevant product data sheet). Areas of breakdown, damage etc., should be prepared to the specified standard (e.g. Sa2½ (ISO 8501-1:2007) and primed prior to the application of Interlac 665

REPAIR

Repair corroded areas with an appropriate International Paint primer (consult the primer data sheet).

OBM

Interlac 665 should always be applied over a recommended primer coating scheme. The primer surface should be dry and free from all contamination, and Interlac 665 must be applied within the overcoating intervals specified (consult the relevant product data sheet). Areas of breakdown, damage etc., should be prepared to the specified standard (e.g. Sa2½ (ISO 8501-1:2007) and primed prior to the application of Interlac 665

Interlac 665 may be applied directly over aged Interlac 665 following thorough fresh water washing and degreasing provided the coating to be overcoated is in an intact and tightly adherent condition. Loose or flaking coatings should be removed back to a firm edge and Interlac 665 or an appropriate primer should be used to repair the area before application of the full coat.

Consult your International Paint representative for specific recommendations.

NOTE

For use in Marine situations in North America, the following surface preparation standards can be used:
SSPC-SP10 in place of Sa2½ (ISO 8501-1:2007)

APPLICATION

Mixing	This material is a one pack coating and should always be mixed thoroughly with a power agitator before application.
Thinner	Not recommended. Use International GTA004 only in exceptional circumstances. DO NOT thin more than allowed by local environmental legislation.
Airless Spray	Recommended Tip Range 0.33-0.48 mm (13-19 thou) Total output fluid pressure at spray tip not less than 141 kg/cm ² (2010 p.s.i.)
Conventional Spray	Use suitable proprietary equipment. Thinning may be required.
Brush	Suitable.
Roller	Suitable.
Cleaner	International GTA004
Work Stoppages and Cleanup	Thoroughly flush all equipment with International GTA004. All unused material should be stored in tightly closed containers. Partially filled containers may show surface skinning and/or a viscosity increase of the material after storage. Material should be filtered prior to use.
Welding	In the event welding or flame cutting is performed on metal coated with this product, dust and fumes will be emitted which will require the use of appropriate personal protective equipment and adequate local exhaust ventilation. In North America do so in accordance with instruction in ANSI/ASC Z49.1 "Safety in Welding and Cutting."

SAFETY

All work involving the application and use of this product should be performed in compliance with all relevant national Health, Safety & Environmental standards and regulations.

Prior to use, obtain, consult and follow the Material Safety Data Sheet for this product concerning health and safety information. Read and follow all precautionary notices on the Material Safety Data Sheet and container labels. If you do not fully understand these warnings and instructions or if you can not strictly comply with them, do not use this product. Proper ventilation and protective measures must be provided during application and drying to keep solvent vapour concentrations within safe limits and to protect against toxic or oxygen deficient hazards. Take precautions to avoid skin and eye contact (ie. gloves, goggles, face masks, barrier creams etc.) Actual safety measures are dependant on application methods and work environment.

EMERGENCY CONTACT NUMBERS:

USA/Canada - Medical Advisory Number 1-800-854-6813

Europe - Contact (44) 191 4696111. For advice to Doctors & Hospitals only contact (44) 207 6359191

R.O.W. - Contact Regional Office

LIMITATIONS

Interlac 665 is not suitable for use on immersed areas.

Overcoating information is given for guidance only and is subject to regional variation depending upon local climate and environmental conditions. Consult your local International Paint representative for specific recommendations. Apply in good weather. Temperature of the surface to be coated must be at least 3°C above the dew point. For optimum application properties bring the material to 21-27°C, unless specifically instructed otherwise, prior to mixing and application. Unmixed material (in closed containers) should be maintained in protected storage in accordance with information given in the STORAGE Section of this data sheet. Technical and application data herein is for the purpose of establishing a general guideline of the coating application procedures. Test performance results were obtained in a controlled laboratory environment and International Paint makes no claim that the exhibited published test results, or any other tests, accurately represent results found in all field environments. As application, environmental and design factors can vary significantly, due care should be exercised in the selection, verification of performance and use of the coating.

In the overcoating data section 'ext' = extended overcoating period. Please refer to our Marine Painting Guide - Definitions and Abbreviations available on our website.

UNIT SIZE	Unit Size	Vol	Pack
	20 lt	20 lt	20 lt
	5 lt	5 lt	5 lt
	5 US gal	5 US gal	5 US gal
	1 US gal	1 US gal	5 US gal
For availability of other unit sizes consult International Paint			
UNIT SHIPPING WEIGHT	Unit Size	Unit Weight	
	20 lt	23.9 Kg	
	5 lt	6.01 Kg	
	5 US gal	49.5 lb	
	1 US gal	10 lb	
STORAGE	Shelf Life	24 months minimum at 25°C. Subject to reinspection thereafter. Store in dry, shaded conditions away from sources of heat and ignition	

WORLDWIDE AVAILABILITY Consult International Paint.

IMPORTANT NOTE

The information in this data sheet is not intended to be exhaustive; any person using the product for any purpose other than that specifically recommended in this data sheet without first obtaining written confirmation from us as to the suitability of the product for the intended purpose does so at their own risk. All advice given or statements made about the product (whether in this data sheet or otherwise) is correct to the best of our knowledge but we have no control over the quality or the condition of the substrate or the many factors affecting the use and application of the product. Therefore, unless we specifically agree in writing to do so, we do not accept any liability at all for the performance of the product or for (subject to the maximum extent permitted by law) any loss or damage arising out of the use of the product. We hereby disclaim any warranties or representations, express or implied, by operation of law or otherwise, including, without limitation, any implied warranty of merchantability or fitness for a particular purpose. All products supplied and technical advice given are subject to our Conditions of Sale. You should request a copy of this document and review it carefully. The information contained in this data sheet is liable to modification from time to time in the light of experience and our policy of continuous development. It is the user's responsibility to check with their local International Paint representative that this data sheet is current prior to using the product.

International and product names mentioned in this data sheet are trademarks of, or are licensed to, AkzoNobel.

© AkzoNobel, 2010

www.international-marine.com

PRODUCT DESCRIPTION A single pack modified polyvinyl butyral/phosphoric acid etch primer free from zinc chromate.

INTENDED USES As an above water pretreatment primer designed to promote subsequent topcoat scheme adhesion to, and seal the surface of non-ferrous metals. Interprime 539 is particularly suitable for priming galvanised steel surfaces. For use at Newbuilding, Maintenance & Repair or On Board Maintenance.

PRODUCT INFORMATION

Colour	VTA538-Yellow
Finish/Sheen	Matt (ISO 2813:1978)
Part B (Curing Agent)	Not applicable
Volume Solids	24% \pm 2% (ISO 3233:1998)
Mix Ratio	Not applicable
Typical Film Thickness	15 microns dry (63 microns wet)
Theoretical Coverage	16.00 m ² /litre at 15 microns dft, allow appropriate loss factors
Method of Application	Airless Spray, Brush, Conventional Spray, Roller
Flash Point	Single Pack 28°C

Drying Information	5°C	15°C	25°C	40°C
Touch Dry [ISO 1517:73]	30 mins	20 mins	15 mins	10 mins
Hard Dry [ISO 8117:80]	60 mins	45 mins	30 mins	20 mins

Overcoating Data - see limitations	Substrate Temperature							
	5°C		15°C		25°C		40°C	
Overcoated By	Min	Max	Min	Max	Min	Max	Min	Max
Interprime 198	2 hrs	ext	60 mins	ext	60 mins	ext	60 mins	ext

REGULATORY DATA

VOC	744 g/t as supplied (EPA Method 24)
	701 g/kg of liquid paint as supplied. EU Solvent Emissions Directive (Council Directive 1999/13/EC)

Note: VOC values are typical and are provided for guidance purposes only. These may be subject to variation depending on factors such as differences in colour and normal manufacturing tolerances.

**SYSTEMS AND
COMPATIBILITY**

Consult your International Paint representative for the system best suited for the surfaces to be protected.

SURFACE PREPARATIONS

Use in accordance with the standard Worldwide Marine Specifications.

All surfaces to be coated should be clean, dry and free from contamination.

High pressure fresh water wash or fresh water wash, as appropriate, and remove all oil or grease, soluble contaminants and other foreign matter in accordance with SSPC-SP1 solvent cleaning.

The preferred method of treating most non-ferrous and galvanised surfaces prior to application of International Paint systems is to brush blast or abrade following treatment as described above. When blast cleaning is employed, a low air pressure should be used with a fine grade of abrasive (0.2-0.5 mm) suitable for the substrate and the nozzle held 1 metre (3 feet) from the surface. Interprime 539 should only be used when this is not possible.

Non-Ferrous Metals

Ensure surface is clean, dry and free from metal corrosion products.

When the substrate is aluminium or a light alloy, the surface should be solvent cleaned and then etched chemically using Interprime 539. It is important to follow the application of Interprime 539 with a paint system appropriate to the painting of aluminium (consult International Paint).

Galvanised Steel

Degrease to SSPC-SP1 and remove any white zinc corrosion products by hand or power tool cleaning.

APPLICATION

Mixing	This material is a one pack coating and should always be mixed thoroughly with a power agitator before application.
Thinner	Not recommended. Use International GTA220 only in exceptional circumstances. DO NOT thin more than allowed by local environmental legislation.
Airless Spray	Recommended Tip Range 0.25-0.38 mm (10-15 thou) Total output fluid pressure at spray tip not less than 112 kg/cm ² (1580 p.s.i.)
Conventional Spray	Recommended.
Brush	Recommended.
Roller	Recommended.
Cleaner	International GTA220
Work Stoppages and Cleanup	<p>Thoroughly flush all equipment with International GTA220. All unused material should be stored in tightly closed containers. Partially filled containers may show surface skinning and/or a viscosity increase of the material after storage. Material should be filtered prior to use.</p> <p>Clean all equipment immediately after use with International GTA220. It is good working practice to periodically flush out spray equipment during the course of the working day. Frequency will depend upon factors such as amount sprayed, temperature and elapsed time including work stoppages. Monitor material condition. All surplus materials and empty containers should be disposed of in accordance with appropriate regional regulations/legislation.</p>
Welding	In the event welding or flame cutting is performed on metal coated with this product, dust and fumes will be emitted which will require the use of appropriate personal protective equipment and adequate local exhaust ventilation. In North America do so in accordance with instruction in ANSI/ASC Z49.1 "Safety in Welding and Cutting."

SAFETY

All work involving the application and use of this product should be performed in compliance with all relevant national Health, Safety & Environmental standards and regulations.

Prior to use, obtain, consult and follow the Material Safety Data Sheet for this product concerning health and safety information. Read and follow all precautionary notices on the Material Safety Data Sheet and container labels. If you do not fully understand these warnings and instructions or if you can not strictly comply with them, do not use this product. Proper ventilation and protective measures must be provided during application and drying to keep solvent vapour concentrations within safe limits and to protect against toxic or oxygen deficient hazards. Take precautions to avoid skin and eye contact (ie. gloves, goggles, face masks, barrier creams etc.) Actual safety measures are dependant on application methods and work environment.

EMERGENCY CONTACT NUMBERS:

USA/Canada - Medical Advisory Number 1-800-854-6813

Europe - Contact (44) 191 4696111. For advice to Doctors & Hospitals only contact (44) 207 6359191

R.O.W. - Contact Regional Office

LIMITATIONS

Care must be taken to ensure surface to be treated is fully degreased otherwise good adhesion of subsequent topcoats will not be achieved.

When applying Interprime 539 via airless spray techniques, up to 10% addition of recommended thinner may be added in certain circumstances to aid coating penetration.

Excessive film thickness may lead to splitting of the film when overcoated with high build systems.

When applying Interprime 539 in confined spaces, ensure adequate ventilation.

Over application of topcoating systems containing strong solvent blends can cause softening of Interprime 539.

This can cause subsequent loss of adhesion as the topcoat dries/cures, and should be avoided.

Interprime 539 is not suitable for use on underwater or boottop areas.

This product will not cure adequately below 5°C. For maximum performance, the curing temperature should be above 10°C.

Overcoating information is given for guidance only and is subject to regional variation depending upon local climate and environmental conditions. Consult your local International Paint representative for specific recommendations.

Apply in good weather. Temperature of the surface to be coated must be at least 3°C above the dew point. For optimum application properties bring the material to 21-27°C, unless specifically instructed otherwise, prior to mixing and application. Unmixed material (in closed containers) should be maintained in protected storage in accordance with information given in the STORAGE Section of this data sheet. Technical and application data herein is for the purpose of establishing a general guideline of the coating application procedures. Test performance results were obtained in a controlled laboratory environment and International Paint makes no claim that the exhibited published test results, or any other tests, accurately represent results found in all field environments. As application, environmental and design factors can vary significantly, due care should be exercised in the selection, verification of performance and use of the coating.

In the overcoating data section 'ext' = extended overcoating period. Please refer to our Marine Painting Guide - Definitions and Abbreviations available on our website.

UNIT SIZE	Unit Size	Part A	
		Vol	Pack
	5 lt	5 lt	5 lt
	1 US gal	1 US gal	1 US gal

For availability of other unit sizes consult International Paint

UNIT SHIPPING WEIGHT	Unit Size	Unit Weight
	5 lt	6.8 Kg
	1 US gal	9.6 lb

STORAGE	Shelf Life	12 months minimum at 25°C. Subject to re-inspection thereafter. Store in dry, shaded conditions away from sources of heat and ignition.

WORLDWIDE AVAILABILITY Consult International Paint.

IMPORTANT NOTE

The information in this data sheet is not intended to be exhaustive; any person using the product for any purpose other than that specifically recommended in this data sheet without first obtaining written confirmation from us as to the suitability of the product for the intended purpose does so at their own risk. All advice given or statements made about the product (whether in this data sheet or otherwise) is correct to the best of our knowledge but we have no control over the quality or the condition of the substrate or the many factors affecting the use and application of the product. Therefore, unless we specifically agree in writing to do so, we do not accept any liability at all for the performance of the product or for (subject to the maximum extent permitted by law) any loss or damage arising out of the use of the product. We hereby disclaim any warranties or representations, express or implied, by operation of law or otherwise, including, without limitation, any implied warranty of merchantability or fitness for a particular purpose. All products supplied and technical advice given are subject to our Conditions of Sale. You should request a copy of this document and review it carefully. The information contained in this data sheet is liable to modification from time to time in the light of experience and our policy of continuous development. It is the user's responsibility to check with their local International Paint representative that this data sheet is current prior to using the product.

 and product names mentioned in this data sheet are trademarks of, or are licensed to, AkzoNobel.

© AkzoNobel, 2010

www.international-marine.com