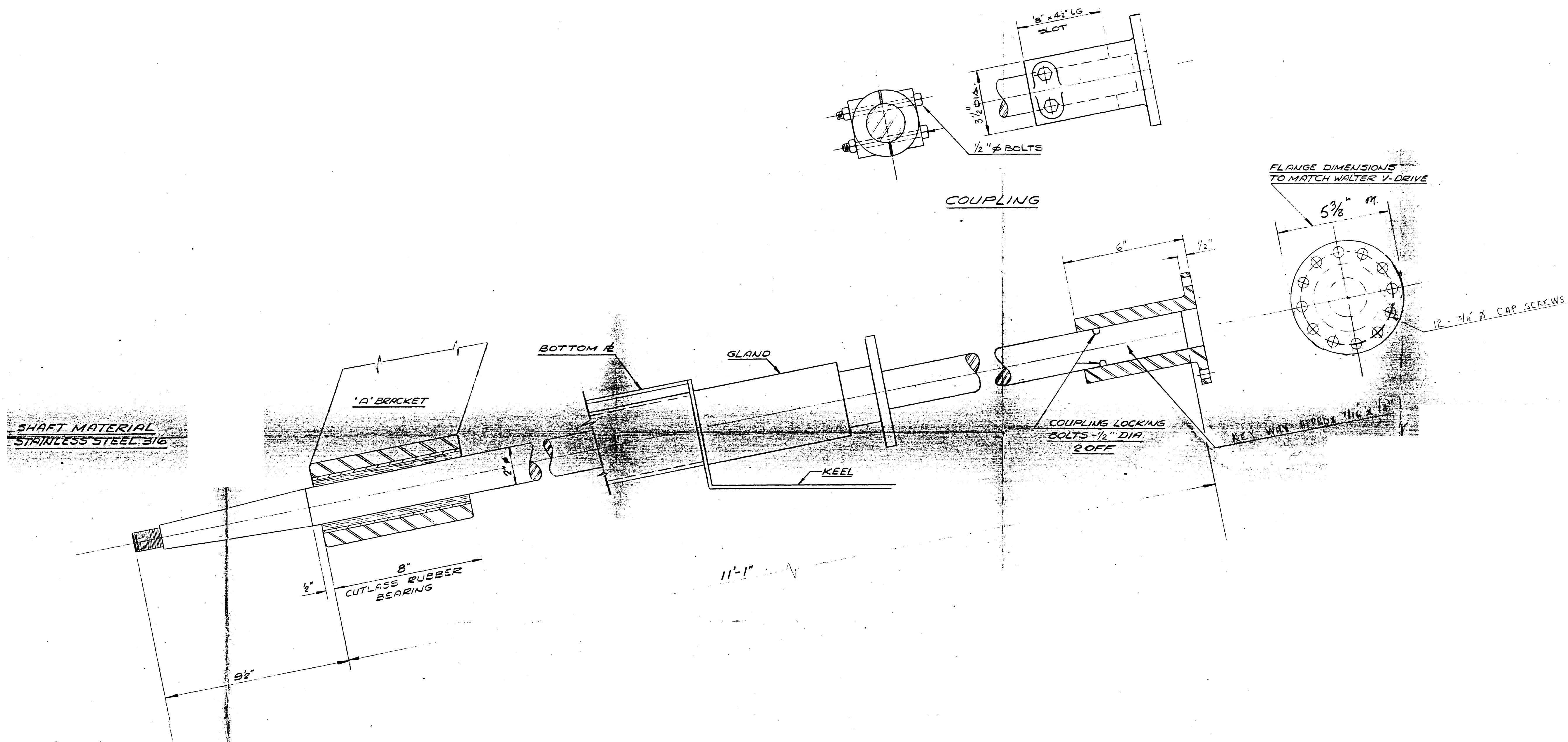
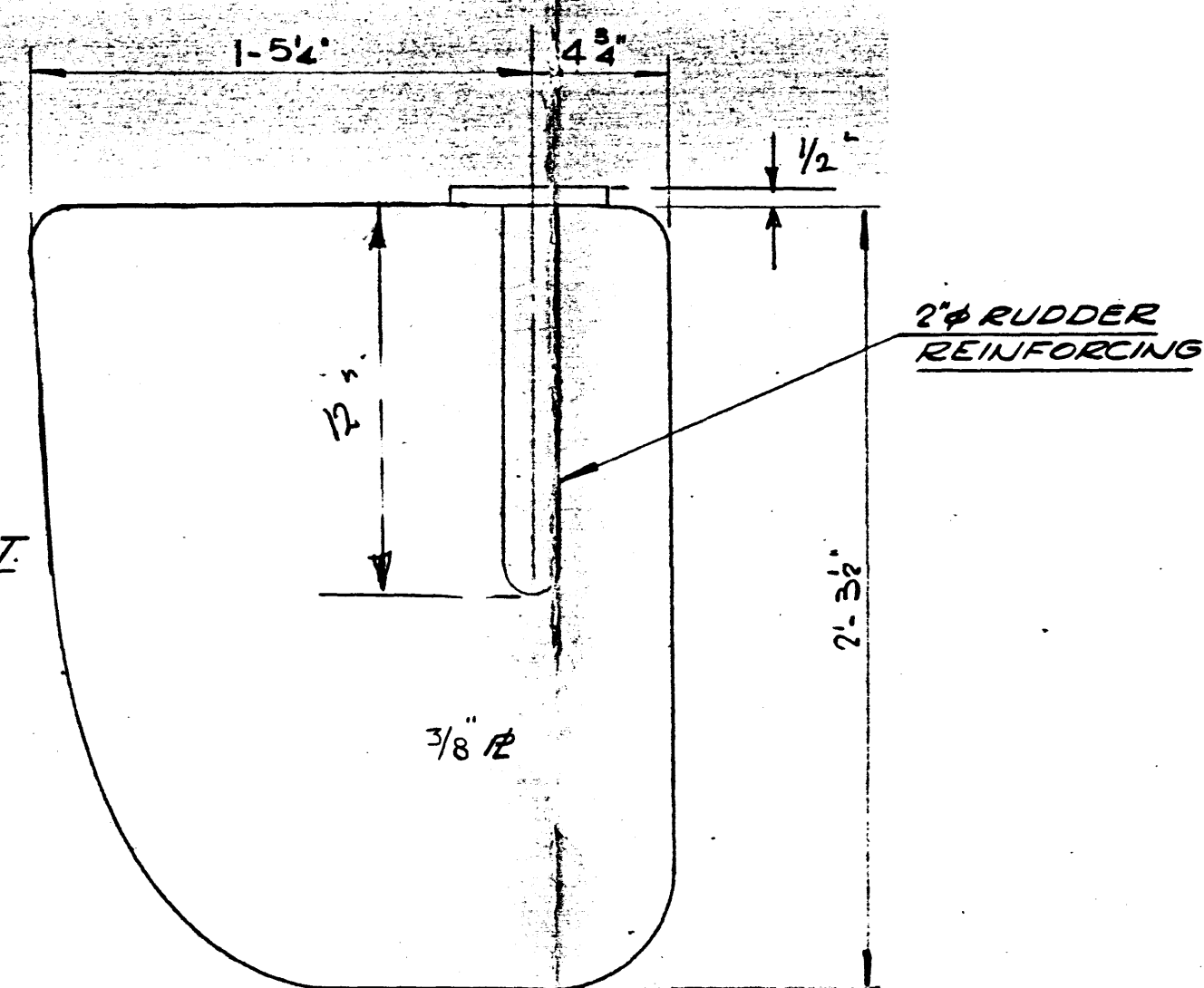


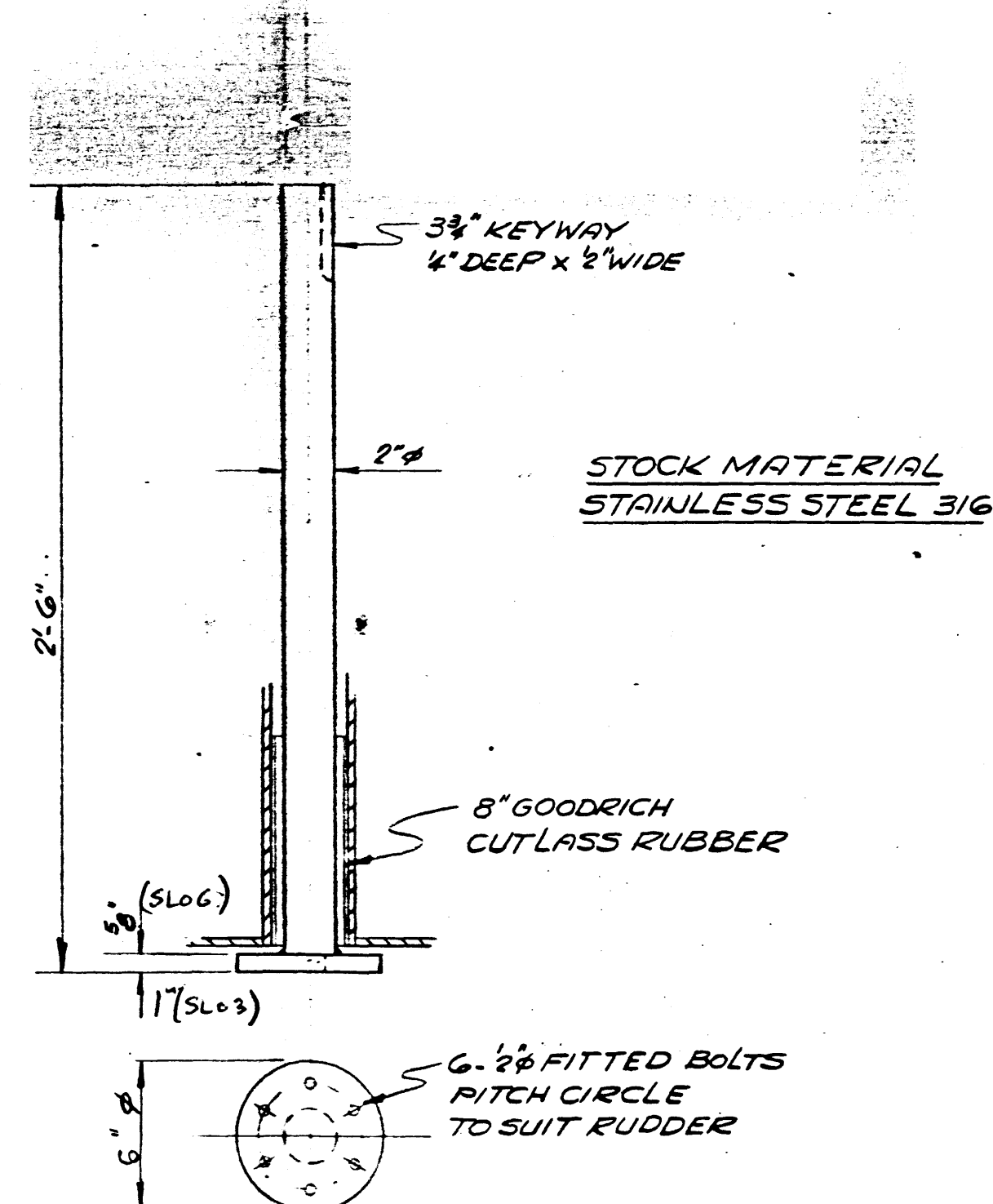
EQUIPMENT DESCRIPTION	
MAIN ENGINE	CUMMINS VT8-370-M 8 CYLINDERS MAX. 370 B.H.P. - 350 S.H.P. @ 3000 RPM OPERATING AT PLEASURE CRAFT RATING GEAR BOX RATIO 2.16:1 OVERALL
PROPELLER	SLOG 25" x 25" PITCH SLOB 24" x 25" PITCH 4 BLADES
STEERING GEAR	SLOG ELECTRO-HYDRAULIC TENFJORD SYSTEM 2 SPEED, 10 SECONDS AND 6 SECONDS HAND OVER TO HAND OVER SLOB ELECTRO-3/4" SUPPLY "CARLAND-VICKERS" HAND OVER TO HAND OVER 12 SECONDS CAN BE MANUALLY ADJUSTED TO REDUCE TIME IF REQUIRED
GENERATOR	25KW "QUAN" GENERATOR - PORT HULL MODEL N° 25DEC-3RB 12 KW "QUAN" GENERATOR - STARBOARD HULL MODEL N° DJC-3CR



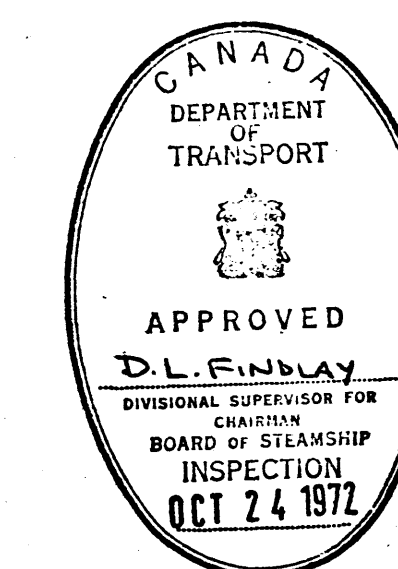
SHAFTING ARRANGEMENT
SCALE: 4"=1'-0"



RUDDER
SCALE: 2"=1'-0"



RUDDER STOCK
SCALE: 2"=1'-0"



AS EXISTING SHIP.

german+milne MARINE TRANSPORTATION CONSULTANTS NAVAL ARCHITECTS MONTREAL		
OWNER / CLIENT ST LAWRENCE SHIP CHANNEL AUTHORITY		
PROJECT CATAMARANS SLOB & SLOG		
TITLE SHAFTING & RUDDER STOCK PLANS		
APPROVAL 	SCALE AS NOTED	DATE 18-8-72
CONTRACT N° 3 3178		DESIGN 05513M02
THIS PLAN IS THE PROPERTY OF GERMAN & MILNE NAVAL ARCHITECTS, MONTREAL, WITH WHOM ITS FURTHER USE OTHER THAN FOR THE PURPOSES OF THIS CONTRACT OR ENQUIRY, MUST BE SPECIALLY ARRANGED FOR.		

TEL: 439-5555
 AS BUILT BY: SD
 DATE: 13-12-84