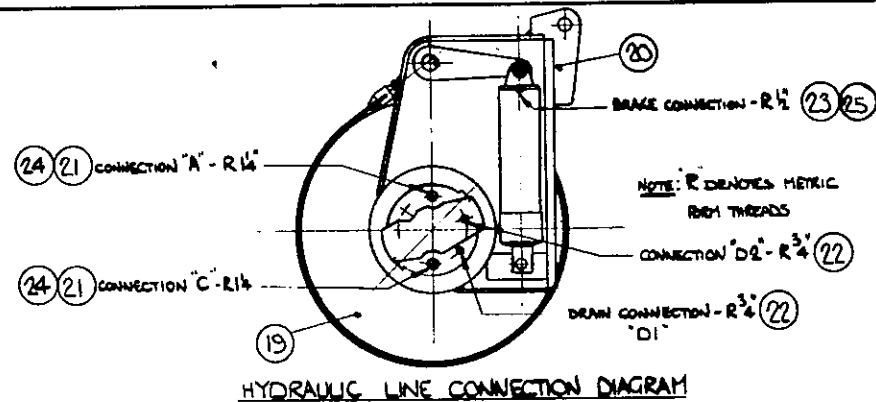
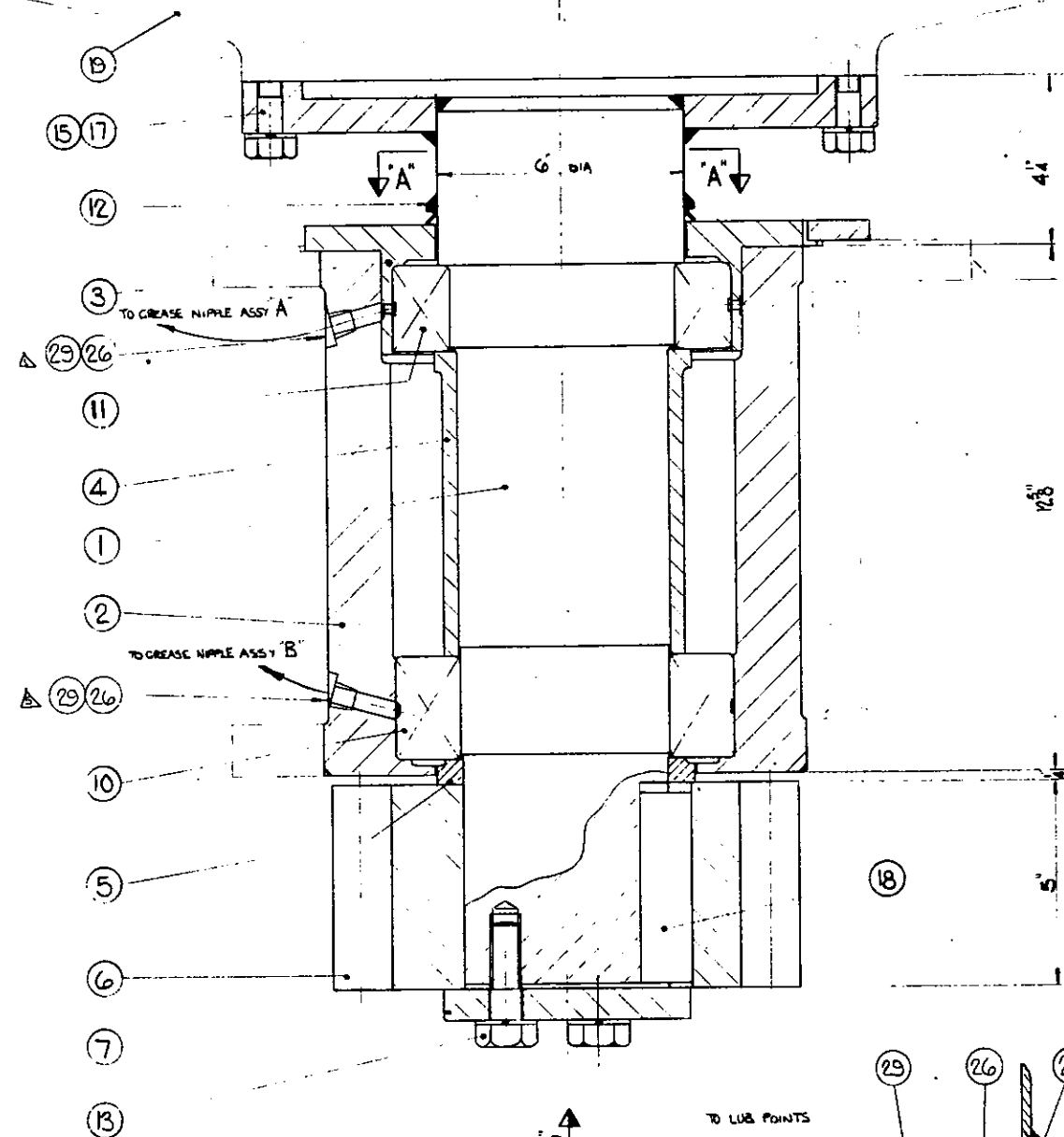


This drawing, in design and detail is the property of
JOHN T. HEPBURN, LIMITED
and must not be used or copied except in connection
with our work, and only after instructions are
given from this company. All rights of design or
invention are reserved.

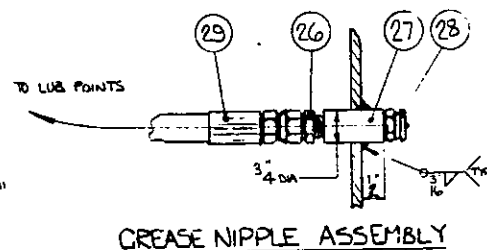


HYDRAULIC LINE CONNECTION DIAGRAM



TO GREASE NIPPLE ASSY "B"

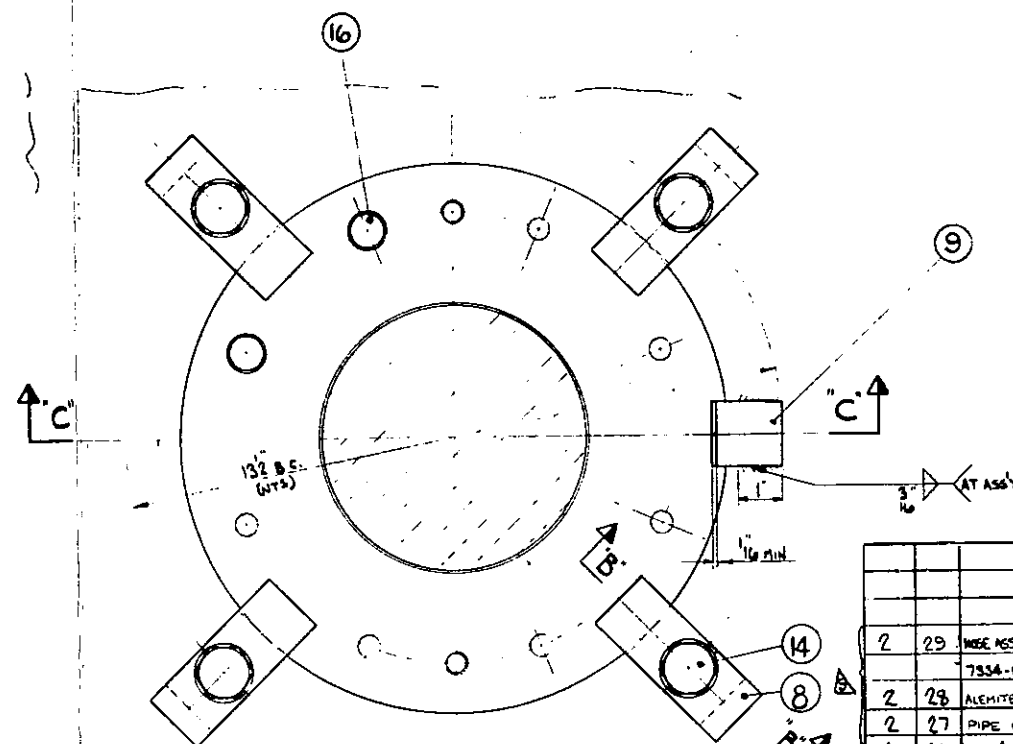
SECTION "C-C"



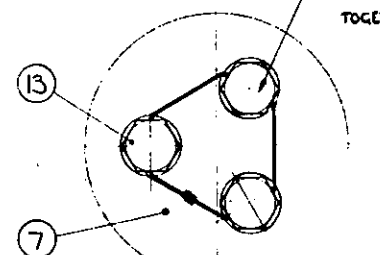
GREASE NIPPLE ASSEMBLY

GREASE LINE LOCATION

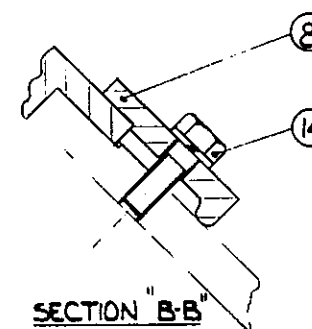
DO NOT SCALE - IF IN DOUBT ASK



SECTION "A-A"

DRILL HEADS OF SCWS
AT ASSEMBLY & WIRE
TOGETHER

VIEW ON ARROW "D"



SECTION "B-B"

QTY	ITEM	DESCRIPTION	DWG NO.	MATL.	REMARKS	ZONE
2	29	HOSE ASSY "B" 7503-001A / AC 20TH HOSE 4" LG			CAPES	
2	23	7534-0034 / 2 OF 7266-0006 PIPES				
2	23	ALUMITE GREASE FITTING A-1186 (1/4" NPT BUTT-WELD)				
2	27	PIPE COUPLING 1/4" NPT 3000			GRANELL	
4	26	JIC 37 FLARE TO PIPE TPD NPT 7253-06712			GATES	
1	25	TUBE END REDUCER 10-6 TREDX-5			PACKER	
2	24	O-RING 2-222 1/2" DIA X 5 SECT			BANAN PARKER	
1	23	ADAPTOR R 1/2" - 3/8" JIC			ARGUMENT	
2	22	ADAPTOR R 3/4" - 1/2" JIC			ARGUMENT	
2	21	ADAPTOR R 1/2" TO 1/2" JIC 37			AGOS-D-13	
1	20	HYDRAULIC BRAKE - TAB 40-2			HAGLUND	
1	19	HYDRAULIC MOTOR NO 4170			HAGLUND	
1	18	1/4" x 1/4" x 48 LG PAR KEY				
4	17	DOWEL PIN 5/8" DIA X 1 1/2" LG			STEEL	
8	16	1/2" UNC HEX HD CAP SCH X 2" LG			GR 5 Fw LW	
12	15	3/8" UNC HEX HD CAP SCH X 2 1/2" LG			GR 5 Fw LW	
4	14	5/8" UNC HEX HD CAP SCH X 2" LG			GR 5 Fw LW	
3	13	3/8" UNC HEX HD CAP SCH X 2 1/2" LG			GR 5 Fw LW	
1	12	FORMEDA V-RING SEAL V-1505				
1	11	SPHERICAL ROLLER BRG 23028C W33			SKF	
1	10	SPHERICAL ROLLER BRG 23126C W33			SKF	
1	9	LOCATING BAR 1/2" x 1/2" x 1 1/2"			30W	
4	8	RETAINING CLIP			45410-D-A	
1	7	RETAINING PLATE			45410-D-A	
1	6	SPUR PINION 15 TEETH - 16 MOD NO 170527A-10			45410-D-A	
1	5	SPACER			45410-D-A	
1	4	SPACER			45410-D-A	
1	3	BEARING HOUSING			45410-D-A	
1	2	BEARING HOUSING			45410-D-A	
1	1	PIVOT SHAFT			45410-D-A	

DESIGNED BY	AF	MAH	HEPBURN
CHECKED BY	AF	MAH	JOHN T. HEPBURN, LIMITED
DRAFTING APP	AF	MAH	914 DUPONT STREET, TORONTO, CANADA
ENG. APP	AF	MAH	MECHANICAL DIVISION
SCALE	1/2" = 1"		CONTRACT NO.
REF. DWG.			CUSTOMER
TITLE	SLEWING DRIVE ASSEMBLY		
SHEET NO	1	OF 1	DWG NO
EST. NO.	2105	LB	45409-0-A1