

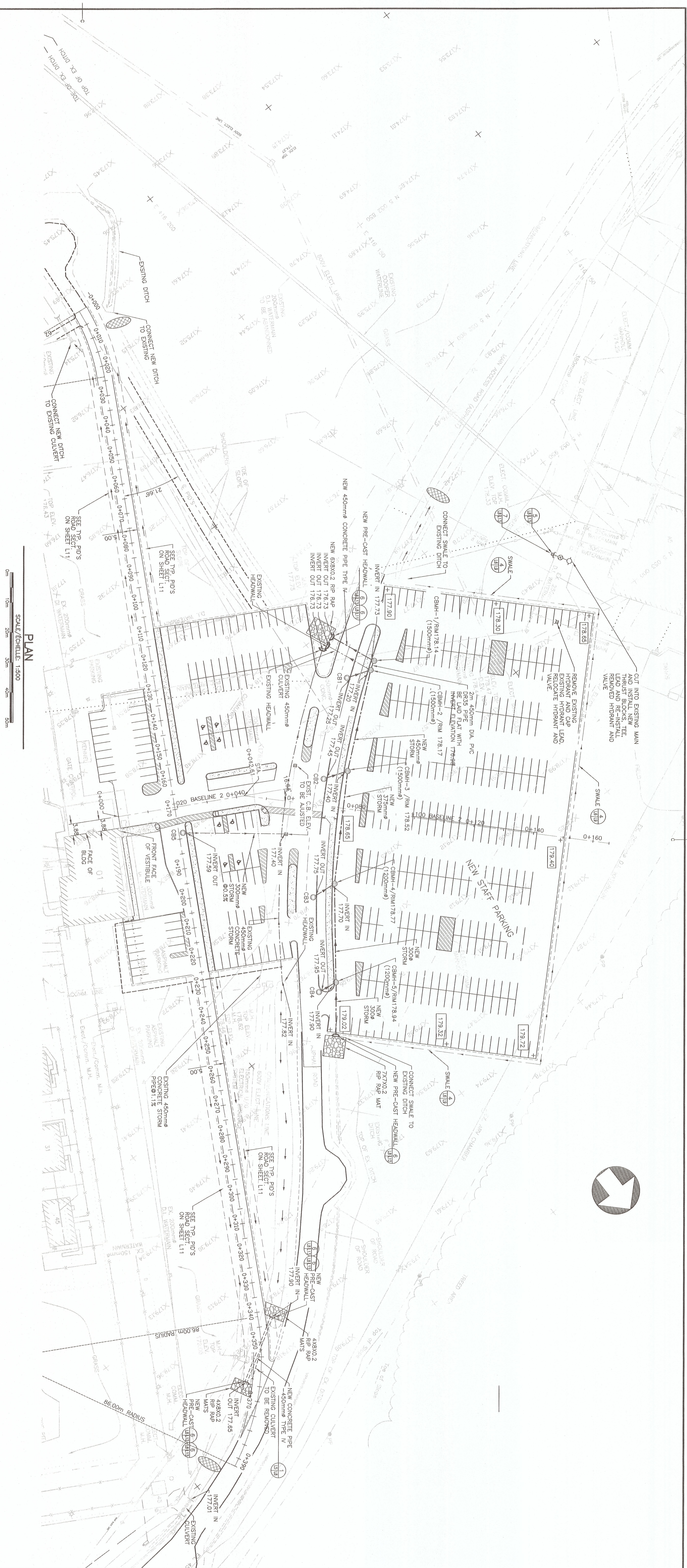


5	ISSUED FOR TENDER	May/06
4	ISSUED FOR TENDER	May/06 2012
3	ISSUED FOR 99% REVIEW	Jan./20 2012
2	ISSUED FOR 66% REVIEW	Dec./03 2011
1	ISSUED FOR 30% REVIEW	Nov./10 2011
options		date

Project: **SPRINGHILL INSTITUTION  
PARKING EXPANSION**  
Project: **SPRINGHILL, NOVA SCOTIA**

DRAINAGE /  
EROSION SEDIMENTATION  
CONTROL

PMQSC Project Manager Administrateur de projets TPQSC  
 project number no. du projet  
 R.043943.002

[illegible]

NOTE: BASE LINE ARC, DIST. TO CBM'S AND STORM IN INTAKE IS BASED ON THE ARC LENGTH ALONG THE CENTERLINE OF THE EXISTING ACCESS ROAD. THE ARC DISTANCE IS TO BE MEASURED FROM @ BASELINE 2.

EXISTING ACCESS ROAD CENTERLINE ELEVATION

EXISTING DITCH ELEVATION

NEW STAFF PARKING LOT - STORM SEWER PROFILE

SCALE - H: 1:500

1/ ALL ELEVATIONS ARE REFERENCED TO

NOTES:

CONTROL POINTS (UTM NAD83 Zone 20)

PL. NAME	EASTING	NORTHING	GSC ELEV	DESCRIPTION
27672	416514.553	5055612.108	167.337	N.S. CONTROL
13581	416900.260	5055557.246	176.860	N.S. CONTROL

2/ THE CATCH BASIN MANHOLE AND CATCHBASIN RIM ELEVATIONS PROVIDED ARE TO BE USED FOR ESTIMATING RISES.

CONSTRUCTION TO MATCH THE FINISH GRADES OF ASPHALT CONCRETE AND THE CONCRETE CURB AND GUTTER.

3/ ALL CATCH BASINS LEADS TO BE 300mm DIA. PVC DR 35