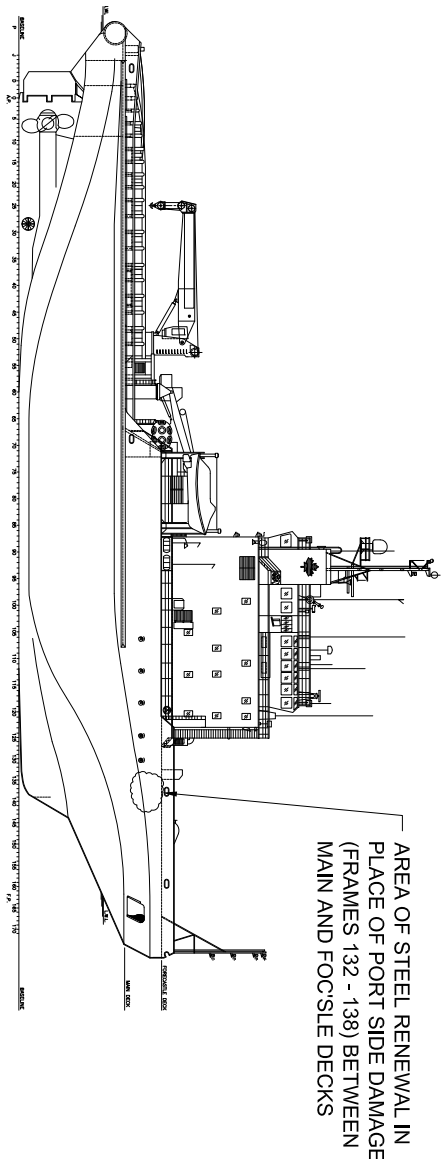


C.C.G.S TERRY FOX

STEEL RENEWALS TO SIDE SHEEL AND INTERNALS BETWEEN MAIN AND FOC/SLE DECKS, PORT SIDE



DRAWING No.	REVISION No.	SHEET No.	AREAS DETAILED
2363-01-00	0	1 OF 3	SIDE SHELL FRAMING
2363-01-00	0	2 OF 3	FRAMES 133, 134, AND 135
2363-01-00	0	3 OF 3	FRAMES 136 AND 137

GENERAL NOTES:

SHELL PLATING TO BE EH36 (MODIFIED) ALL OTHER STEEL MATERIALS TO BE LLOYDS GRADE "A". ALL WELDING TO BE AS ORIGINAL. ALL SEAMS TO BE FULL PENETRATION AND ALL STIFFENERS TO BE CONTINUOUSLY WELDED WITH A 6mm LEG LENGTH FILLET WELD.

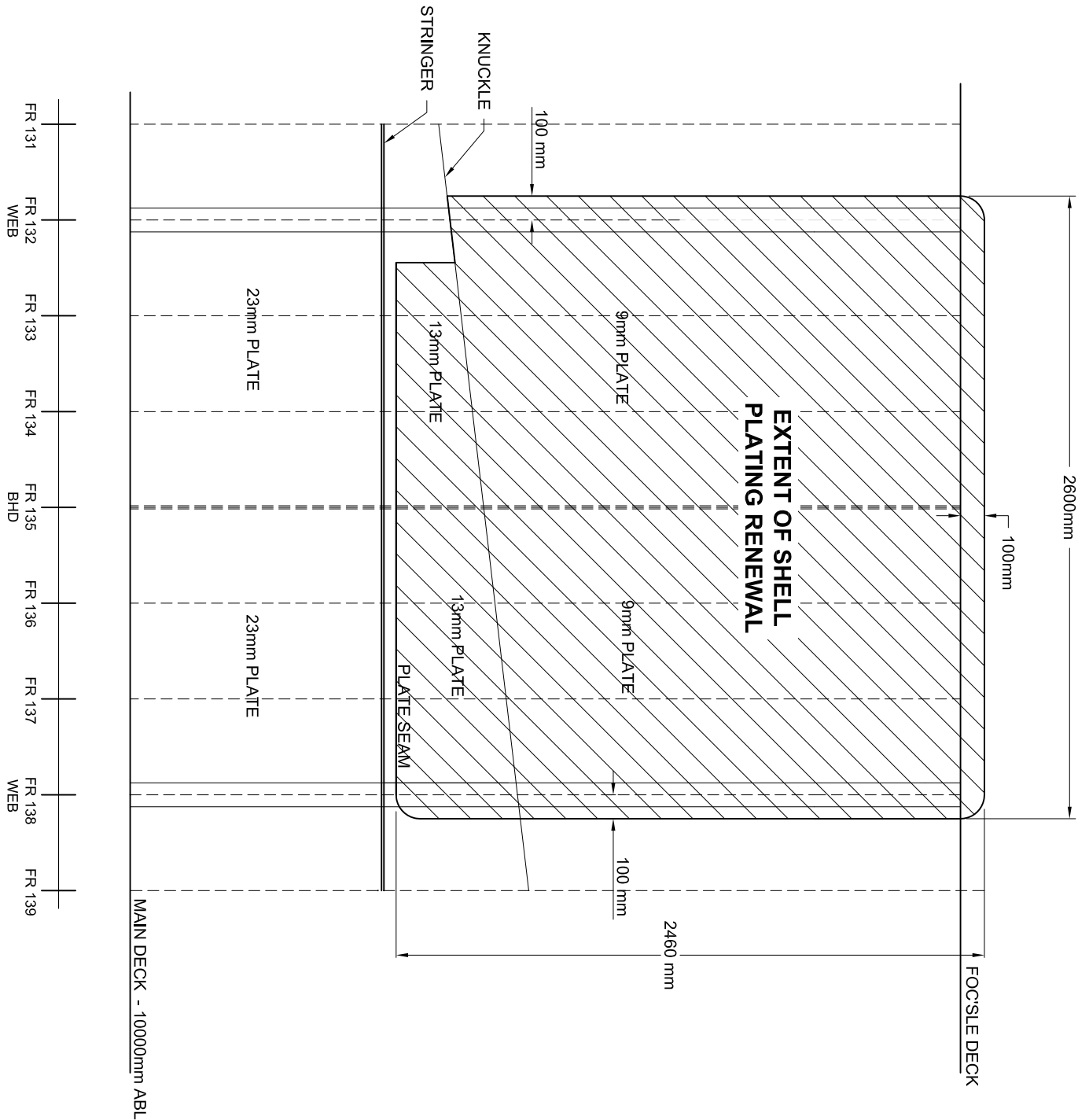
**ALL WORK TO BE TO THE ACCEPTANCE OF THE ATTENDING
TC SURVEYOR**

MSI
Marine Services
International (2008) Ltd.

197A Major's Path P.O. BOX 3034
Paradise, NL Canada A1L 1N7
Telephone 709 782 2700 Facsimile 709 782 2707
www.msini.com

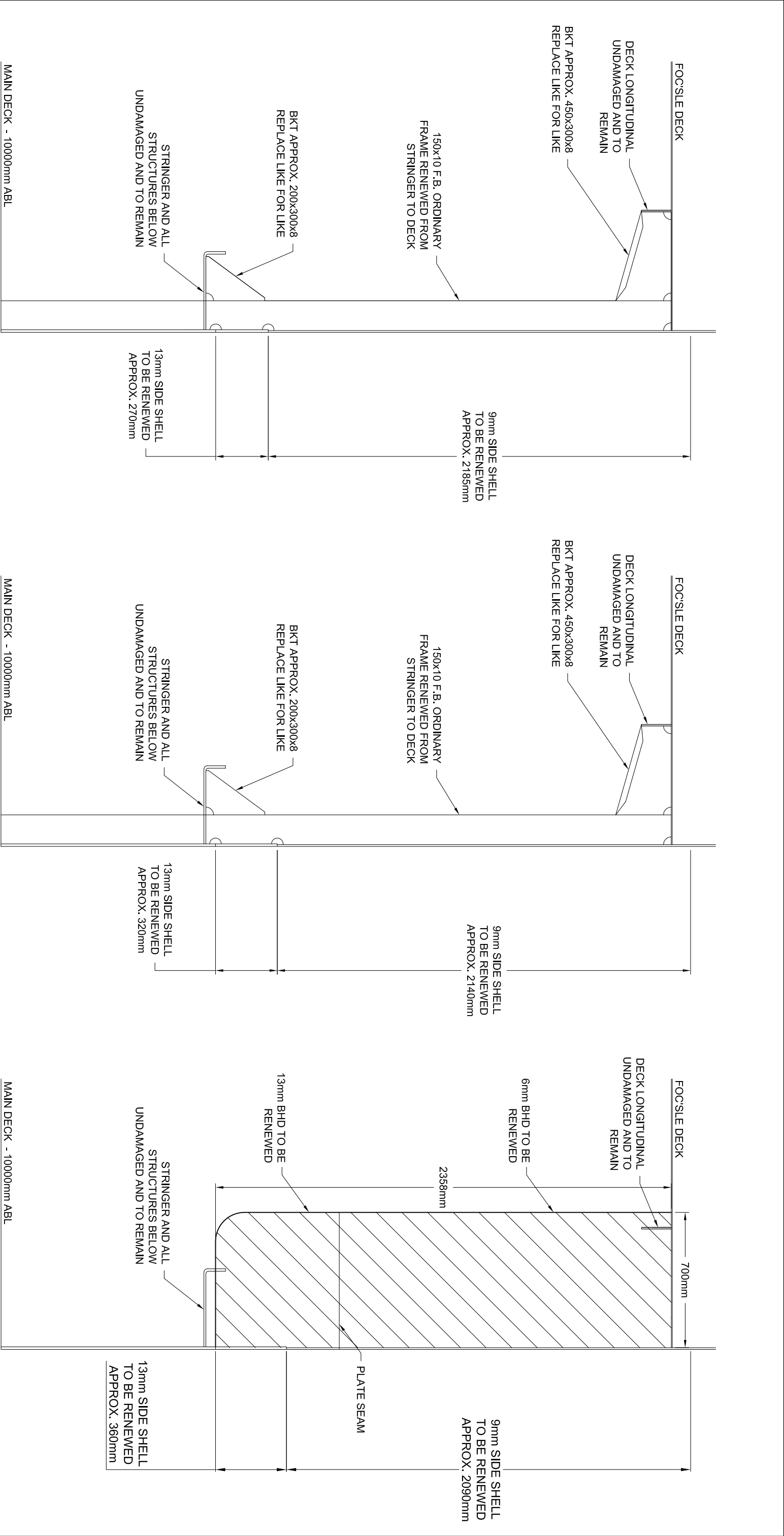
**C.C.G.S. TERRY FOX
RENEWAL FOR PORT SIDE HULL DAMAGE**

D.F.O. VESSEL SUPPORT



SIDE SHELL FRAMING
LOOKING TO PORT
SCALE: 1:25

DRAWN BY:	RM	DATE DRAWN:	JUNE 2012
CHECK BY:	PB	DATE CHECKED:	JUNE 2012
PROJECT NO.:	2363	SCALE:	AS NOTED
DRAWING NO.:	2363-01-00	REVISION NO.:	0
		SHEET NO.:	1 OF 3



<div><div><div>MSI</div><div>International (2008) Ltd.</div></div><div><div>197A Major's Path P.O.BOX 29132</div><div>St. John's, NL Canada A1A 5B5</div><div>Telephone 709 782 2700 Facsimile 709 782 2707</div><div>www.msintl.com</div></div></div>		TITLE:	
Marine Services		C.C.G.S. TERRY FOX	
Renewal for Port Side Hull Damage		RENEWAL FOR PORT SIDE HULL DAMAGE	
CLIENT:		D.F.O VESSEL SUPPORT	
DRAWN BY:		DATE DRAWN:	
CHECK BY:		DATE CHECKED:	
PROJECT NO.:		SCALE:	
DRAWING NO.:		REVISION NO.:	
2363-01-00		0	
		SHEET NO.:	
		2 OF 3	

<div><div><div>MSI</div><div>International (2008) Ltd.</div></div><div><div>Marine Services</div><div>197A Major's Path P.O. BOX 3034 Paradise, NL Canada A1L 1N7 Telephone 709 782 2700 Facsimile 709 782 2707 www.msintl.com</div></div></div>		<div>TITLE:</div> <div><div>C.C.G.S. TERRY FOX</div><div>RENEWAL FOR PORT SIDE HULL DAMAGE</div></div>
--	--	--