


REFERENCES

GENERAL NOTES

PRINCIPAL PARTICULARS.	
LENGTH OVERALL.....	83.00 M.
LENGTH B.P.....	75.00 M.
BREADTH MLD.....	16.20 M.
DEPTH MLD.....	7.90 M.
SCANTLING DRAFT.....	6.08 M.

CLASSIFICATION:-

 100 AI ICE CLASS 1A SUPER
 NAVIGATION AIDS VESSEL.
 CANADIAN ARCTIC CLASS 2
 HOME TRADE 1 VOYAGES.

SHELL PLT. ABOVE MAIN DECK TO UPPER AND
FO'CSLE DECKS TO BE LLOYD'S GRADE "E".
ALL OTHER PLATE TO BE LLOYD'S GRADE "A".
ALL ANGLE BARS AND CHANNELS TO BE GRADE
G40.21 44W.

ALL FLAT BARS TO BE LLOYD'S GRADE A.
DIMENSIONS OF ANGLE BARS, CHANNELS AND
FLAT BARS ARE GIVEN IN IMPERIAL MEASURES.
ALL OTHER DIMENSIONS ARE GIVEN IN METRIC.
CONSTRUCTION AND WELDING DETAILS TO BE IN
ACCORDANCE WITH CS & E STANDARDS AS
REVIEWED AND ACCEPTED BY CCC.

C.C.G.S. ANN HARVEY
APRIL 1987
AS FITTED

no.	REVISION	by	date
-----	----------	----	------

prints issued

[illegible]Halifax-Dartmouth Industries Limited

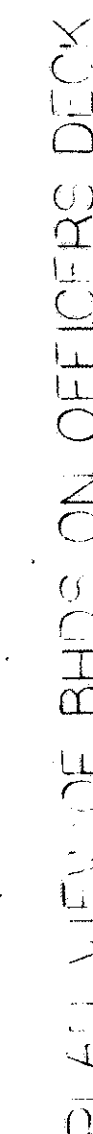
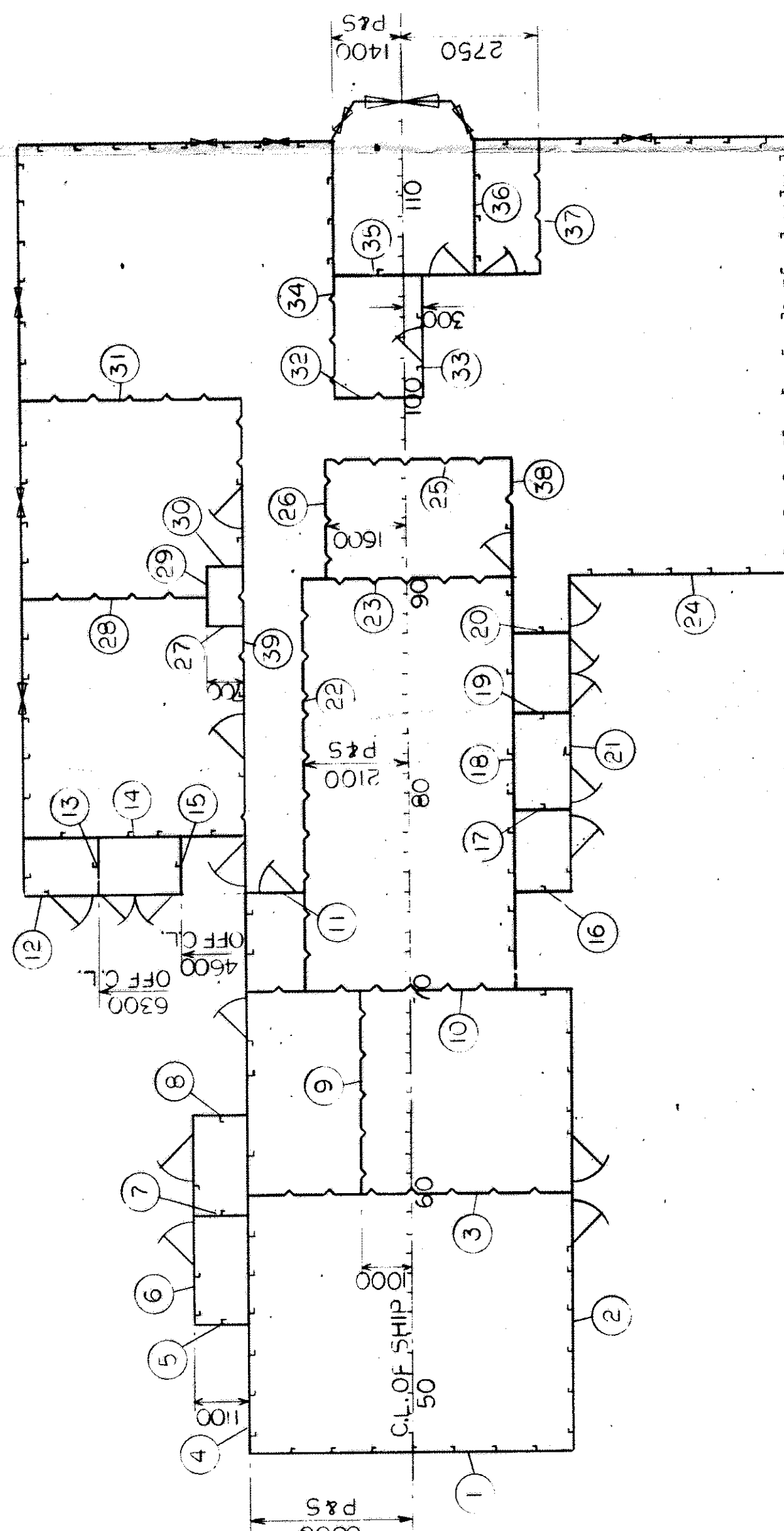
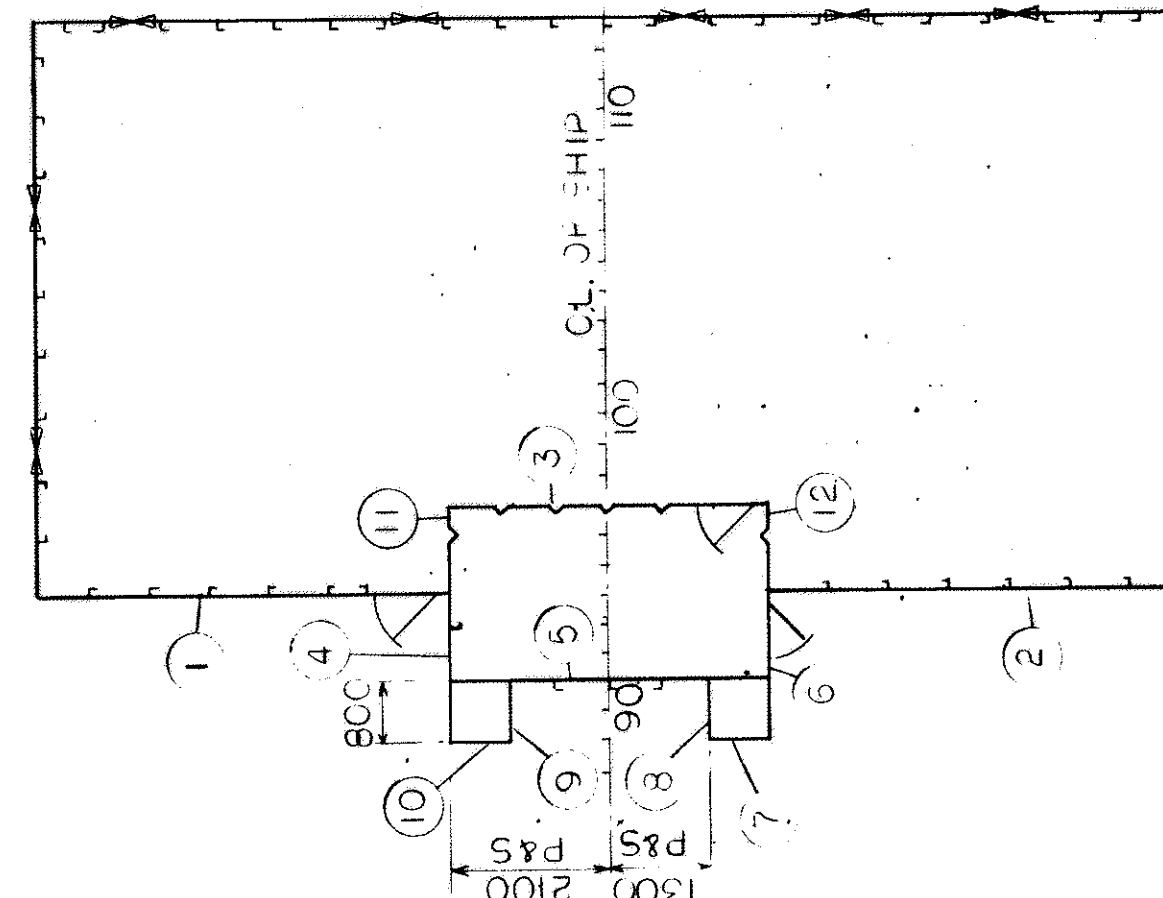
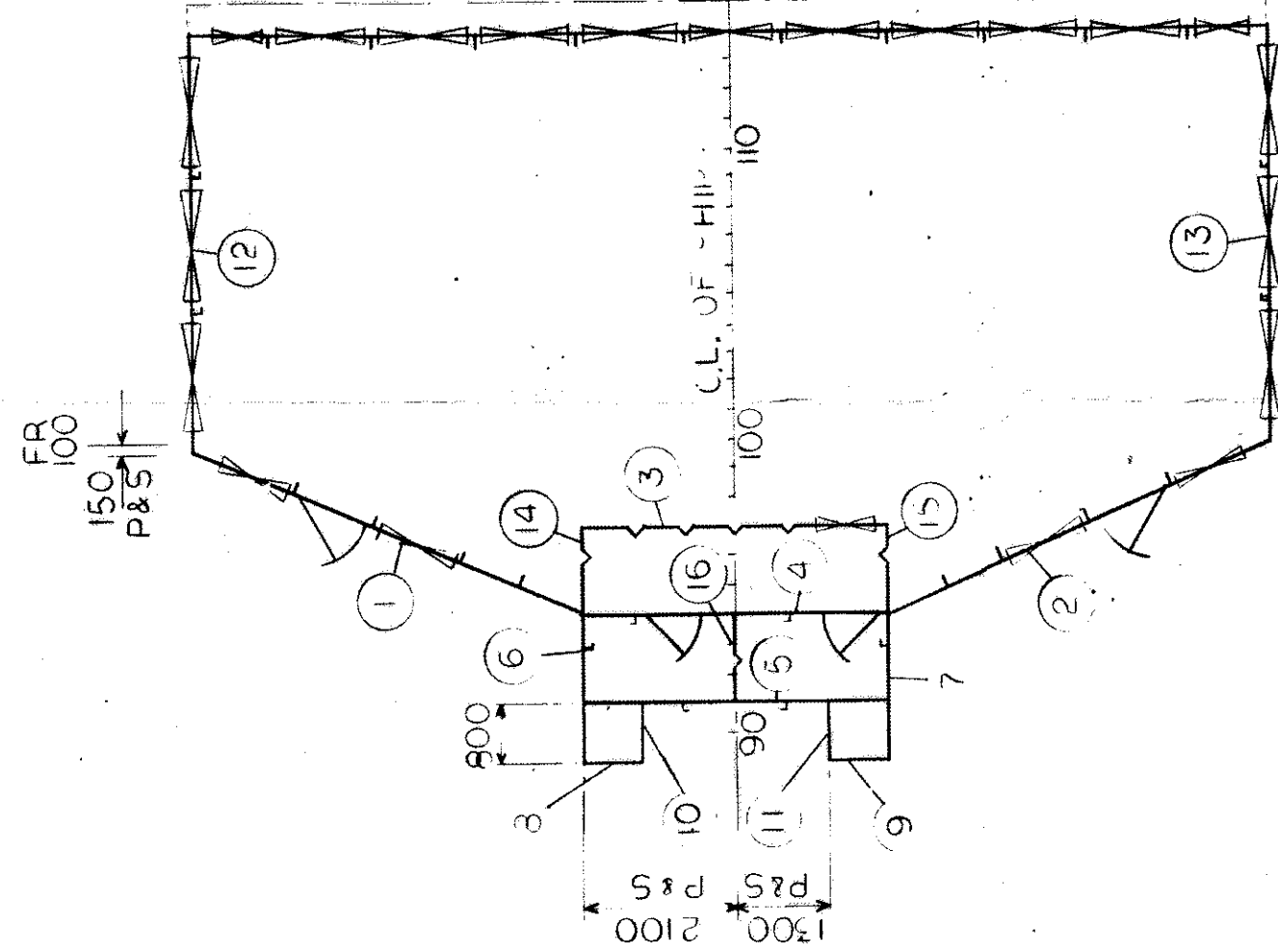
 Canadian
Coast Guard

PROJECT TYPE 1100 NAVAIDS VESSEL

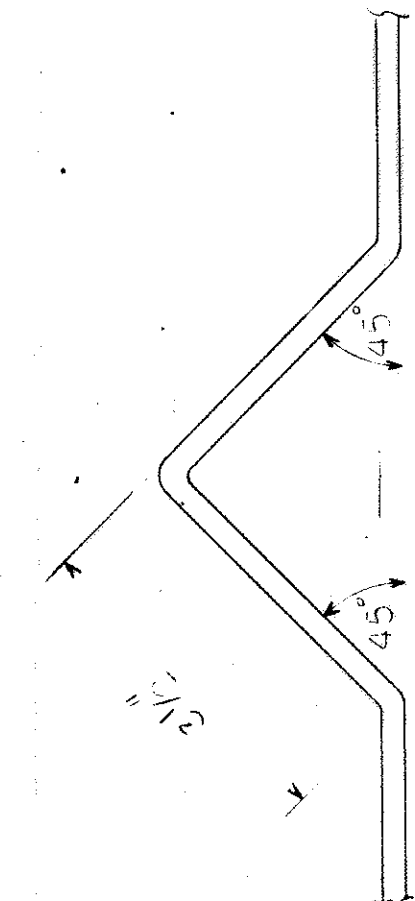
TITLE SUPERSTRUCTURE SCANTLINGS
BILL HEADS

APPR.	SENT	APPR.	SENT	APPR.	SENT
OWNER	30 APR 84	6 JUN 84	3 JUL 84		
LLOYD	25 APR 84	23 MAY 84			
A.S.					
	25 APR 84		3 JUL 84	4 JUL 84	
Scale.	1:100		Account no.		

DRG. N°: 72-07

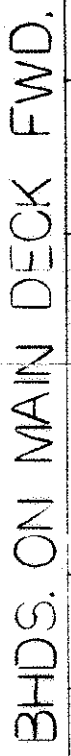


BDS ON OFFICERS DECK			
PLT	STIFFA SIZE	SPACING	REMARKS
1	4 X 3 1/2 X 1/4 A	750	
2	4 X 3 1/2 X 1/4 A	750	
3	3 1/2 X 3 1/2 X 1/4 A	800	2 1/2 X 2 1/2 X 1/4 A AT DOOR
4	4 X 3 1/2 X 1/4 A	700	
5		700	
6		800	
7			
8			
9			
10			
11	3 1/2 X 3 1/2 X 1/4 A	800	
12	3 1/2 X 3 1/2 X 1/4 A	800	

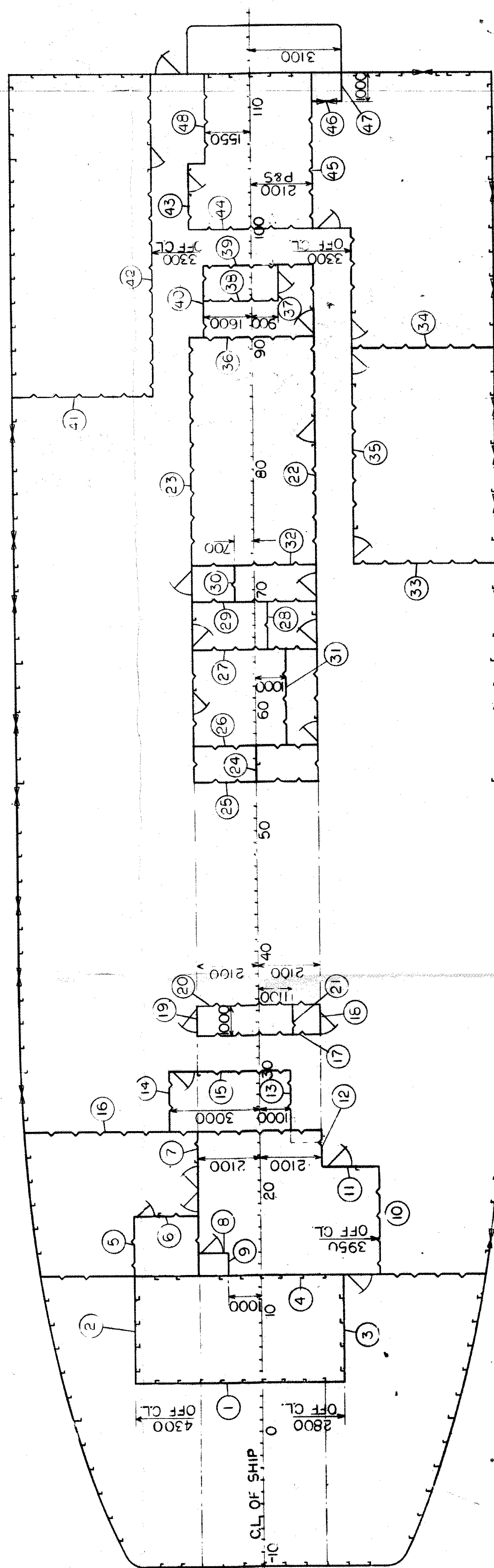
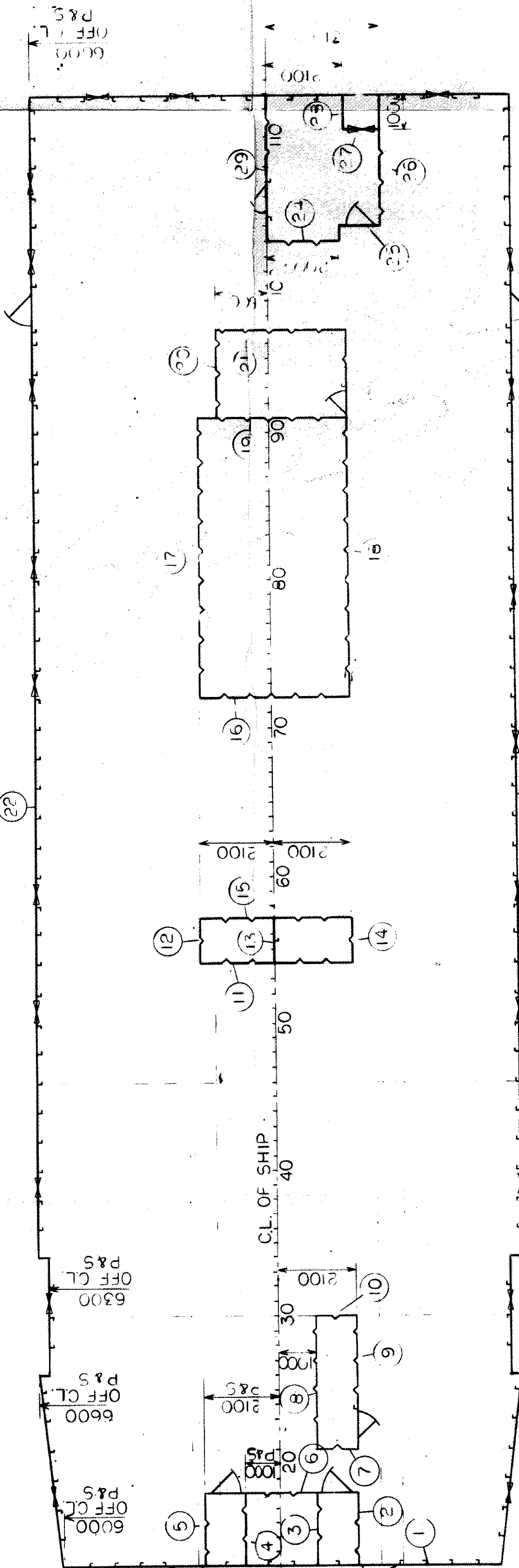
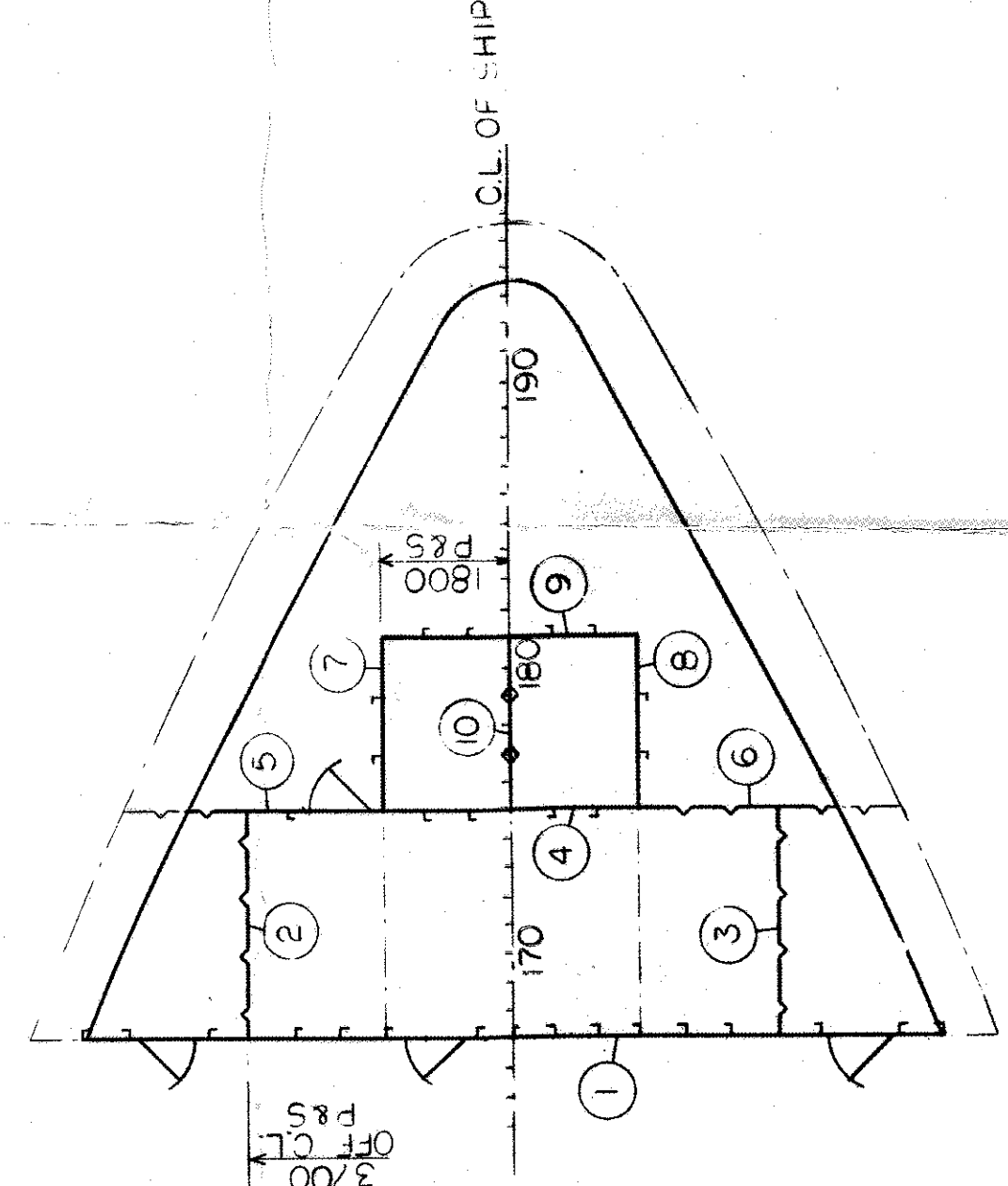


NO.	PK	STIFFER SIZE	SPALLS	REMARKS
1	60	5 X 12 F.B.	450	
2	3	5 X 12 F.B.	450	
3	2	3 1/2 X 3 1/2 SWEDGE	700	
4	3	2 1/2 X 3 1/2 14 GA	700	
5	4	4 X 3 X 1/2 14 GA	700	
6	3	1/2 X 3 1/2 SWEDGE	800	
7	1	1/2 X 3 1/2 SWEDGE	800	
8	1	1/2 X 3 1/2 SWEDGE	800	
9	1	1/2 X 3 1/2 SWEDGE	800	
10	1	1/2 X 3 1/2 SWEDGE	800	
11	1	5 X 3 X 3/4 GA	450	
12	3	5 X 3 X 3/4 GA	450	
13	3	3 1/2 X 3 1/2 SWEDGE	800	
14	3	3 1/2 X 3 1/2 SWEDGE	800	
15	3	3 1/2 X 3 1/2 SWEDGE	800	
16	3	3 1/2 X 3 1/2 SWEDGE	800	
17	3	3 1/2 X 3 1/2 SWEDGE	800	
18	3	3 1/2 X 3 1/2 SWEDGE	800	
19	3	3 1/2 X 3 1/2 SWEDGE	800	
20	3	3 1/2 X 3 1/2 SWEDGE	800	
21	3	3 1/2 X 3 1/2 SWEDGE	800	
22	3	3 1/2 X 3 1/2 SWEDGE	800	
23	3	3 1/2 X 3 1/2 SWEDGE	800	
24	3	3 1/2 X 3 1/2 SWEDGE	800	
25	3	3 1/2 X 3 1/2 SWEDGE	800	
26	3	3 1/2 X 3 1/2 SWEDGE	800	
27	3	3 1/2 X 3 1/2 SWEDGE	800	
28	3	3 1/2 X 3 1/2 SWEDGE	800	
29	3	3 1/2 X 3 1/2 SWEDGE	800	
30	3	3 1/2 X 3 1/2 SWEDGE	800	
31	3	3 1/2 X 3 1/2 SWEDGE	800	
32	3	3 1/2 X 3 1/2 SWEDGE	800	
33	3	3 1/2 X 3 1/2 SWEDGE	800	
34	3	3 1/2 X 3 1/2 SWEDGE	800	
35	3	3 1/2 X 3 1/2 SWEDGE	800	
36	3	3 1/2 X 3 1/2 SWEDGE	800	
37	3	3 1/2 X 3 1/2 SWEDGE	800	
38	3	3 1/2 X 3 1/2 SWEDGE	800	
39	3	3 1/2 X 3 1/2 SWEDGE	800	
40	3	3 1/2 X 3 1/2 SWEDGE	800	
41	3	3 1/2 X 3 1/2 SWEDGE	800	
42	3	3 1/2 X 3 1/2 SWEDGE	800	
43	3	3 1/2 X 3 1/2 SWEDGE	800	
44	3	3 1/2 X 3 1/2 SWEDGE	800	
45	3	3 1/2 X 3 1/2 SWEDGE	800	
46	3	3 1/2 X 3 1/2 SWEDGE	800	
47	3	3 1/2 X 3 1/2 SWEDGE	800	
48	3	3 1/2 X 3 1/2 SWEDGE	800	
49	3	3 1/2 X 3 1/2 SWEDGE	800	
50	3	3 1/2 X 3 1/2 SWEDGE	800	
51	3	3 1/2 X 3 1/2 SWEDGE	800	
52	3	3 1/2 X 3 1/2 SWEDGE	800	
53	3	3 1/2 X 3 1/2 SWEDGE	800	
54	3	3 1/2 X 3 1/2 SWEDGE	800	
55	3	3 1/2 X 3 1/2 SWEDGE	800	
56	3	3 1/2 X 3 1/2 SWEDGE	800	
57	3	3 1/2 X 3 1/2 SWEDGE	800	
58	3	3 1/2 X 3 1/2 SWEDGE	800	
59	3	3 1/2 X 3 1/2 SWEDGE	800	
60	3	3 1/2 X 3 1/2 SWEDGE	800	
61	3	3 1/2 X 3 1/2 SWEDGE	800	
62	3	3 1/2 X 3 1/2 SWEDGE	800	
63	3	3 1/2 X 3 1/2 SWEDGE	800	
64	3	3 1/2 X 3 1/2 SWEDGE	800	
65	3	3 1/2 X 3 1/2 SWEDGE	800	
66	3	3 1/2 X 3 1/2 SWEDGE	800	
67	3	3 1/2 X 3 1/2 SWEDGE	800	
68	3	3 1/2 X 3 1/2 SWEDGE	800	
69	3	3 1/2 X 3 1/2 SWEDGE	800	
70	3	3 1/2 X 3 1/2 SWEDGE	800	
71	3	3 1/2 X 3 1/2 SWEDGE	800	
72	3	3 1/2 X 3 1/2 SWEDGE	800	
73	3	3 1/2 X 3 1/2 SWEDGE		

NOTE:-
STRUCTURE IMCO DECK CRANE LOADING TO
BE RECONSIDERED WHEN CRANE INFORMATION
BECOMES AVAILABLE.



STIFFI	THK	SIZE	SPACING	REMARKS
1	6 5	4 X 3 1/2 "A	635	
2	5 5	3 1/2 X 3 1/2 "WEDGE	900	
3	5 5	3 1/2 X 3 1/2 "WEDGE	900	
4	5 5	3 1/2 X 3 1/2 "WEDGE	900	
5	5 5	3 1/2 X 3 1/2 "WEDGE	900	
6	5 5	3 1/2 X 3 1/2 "WEDGE	900	
7	5 5	3 1/2 X 3 1/2 "WEDGE	900	
8	5 5	3 1/2 X 3 1/2 "A	900	
9	5 5	4 X 4 "A	900	
10	5 5	4 X 4 "A	900	



NO.	PTH	STIFFER SIZE	SPACING	REMARKS
1	60	4" X 3 1/2" X 1/4" A	825	
2	60	4" X 3 1/2" X 1/4" A	825	
3	60	3 1/2" X 3 1/2" X 1/4" A	800	
4	60	4" X 3 1/2" X 1/4" A	800	
5	60	4" X 3 1/2" X 1/4" A	800	
6	60	2 1/2" X 2 1/2" X 1/4" A	550	
7	60	2 1/2" X 2 1/2" X 1/4" A	550	
8	60	2 1/2" X 2 1/2" X 1/4" A	550	
9	60	3 1/2" X 3 1/2" X 1/4" A	500	
10	60	2 1/2" X 2 1/2" X 1/4" A	500	
11	60	2 1/2" X 2 1/2" X 1/4" A	500	
12	60	2 1/2" X 2 1/2" X 1/4" A	750	
13	60	2 1/2" X 2 1/2" X 1/4" A	500	
14	60	2 1/2" X 2 1/2" X 1/4" A	500	
15	60	2 1/2" X 2 1/2" X 1/4" A	500	
16	60	2 1/2" X 2 1/2" X 1/4" A	500	
17	60	4" X 3 1/2" X 1/4" A	800	
18	60	2 1/2" X 2 1/2" X 1/4" A	600	
19	60	3 1/2" X 3 1/2" X 1/4" A	600	
20	60	3 1/2" X 3 1/2" X 1/4" A	600	
21	60	3 1/2" X 3 1/2" X 1/4" A	800	
22	60	3 1/2" X 3 1/2" X 1/4" A	700	
23	60	3 1/2" X 3 1/2" X 1/4" A	700	
24	60	3 1/2" X 3 1/2" X 1/4" A	700	
25	60	3 1/2" X 3 1/2" X 1/4" A	800	
26	60	3 1/2" X 3 1/2" X 1/4" A	750	
27	60	3 1/2" X 3 1/2" X 1/4" A	750	
28	60	3 1/2" X 3 1/2" X 1/4" A	750	
29	60	3 1/2" X 3 1/2" X 1/4" A	750	
30	60	3 1/2" X 3 1/2" X 1/4" A	750	
31	60	3 1/2" X 3 1/2" X 1/4" A	800	
32	60	3 1/2" X 3 1/2" X 1/4" A	800	
33	60	4" X 3 1/2" X 1/4" A	800	
34	60	3 1/2" X 3 1/2" X 1/4" A	800	
35	60	3 1/2" X 3 1/2" X 1/4" A	800	
36	60	3 1/2" X 3 1/2" X 1/4" A	800	
37	60	3 1/2" X 3 1/2" X 1/4" A	800	
38	60	3 1/2" X 3 1/2" X 1/4" A	800	
39	60	3 1/2" X 3 1/2" X 1/4" A	800	
40	60	3 1/2" X 3 1/2" X 1/4" A	800	

B.D.S. ON UPPER DECK			SPACING	REMARKS
NO	CHK	STIFFR SIZE		
1	6.0	4" X 3" X 1/4" OA	700	
2	1	3" X 3" X 1/4" OA	800	
3	2	3 1/2" X 3 1/2" SWEDGE	800	
4	3	3 1/2" X 3 1/2" SWEDGE	800	
5	4	3 1/2" X 3 1/2" SWEDGE	800	
6	5	3 1/2" X 3 1/2" SWEDGE	800	2 1/2" X 2 1/2" X 1/4" OA AT DOORS
7	6	3 1/2" X 3 1/2" SWEDGE	800	
8	7	3 1/2" X 3 1/2" SWEDGE	800	
9	8	3 1/2" X 3 1/2" SWEDGE	800	2 1/2" X 2 1/2" X 1/4" OA AT DOOR
10	9	3 1/2" X 3 1/2" SWEDGE	800	
11	10	3 1/2" X 3 1/2" SWEDGE	700	
12	11	3 1/2" X 3 1/2" SWEDGE	700	
13	12	3 1/2" X 3 1/2" SWEDGE	600	
14	13	3 1/2" X 3 1/2" SWEDGE	600	
15	14	3 1/2" X 3 1/2" SWEDGE	700	
16	15	3 1/2" X 3 1/2" SWEDGE	700	
17	16	3 1/2" X 3 1/2" SWEDGE	700	
18	17	3 1/2" X 3 1/2" SWEDGE	800	
19	18	3 1/2" X 3 1/2" SWEDGE	700	
20	19	3 1/2" X 3 1/2" SWEDGE	700	
21	20	4" X 3" X 1/4" OA	900	
22	21	4" X 3" X 1/4" OA	900	
23	22	4" X 3" X 1/4" OA	900	
24	23	3 1/2" X 3 1/2" SWEDGE	800	
25	24	3 1/2" X 3 1/2" SWEDGE	700	
26	25	3 1/2" X 3 1/2" SWEDGE	700	
27	26	3 1/2" X 3 1/2" SWEDGE	800	
28	27	3 1/2" X 3 1/2" SWEDGE	800	
29	28	3 1/2" X 3 1/2" SWEDGE	800	
30	29	3 1/2" X 3 1/2" SWEDGE	800	2 1/2" X 2 1/2" X 1/4" OA AT DOOR

BHD's	Q1 MAIN DECK AFT	PLT	116A	112	500-ING	PLMARC
Nº	THK	5'X3'6" OA				
1	60	5'X3'6" OA			750	
2	60				800	
3	70				750	3/8" X 3/8" SWEDGE
4	60				800	20X2 1/2" X 1/4" OA AT DOOR
5	60				750	20X2 1/2" X 1/4" OA AT DOOR
6	70				800	3/8" X 3/8" SWEDGE
7	60				750	20X2 1/2" X 1/4" OA AT DOOR
8	60				800	3/8" X 3/8" SWEDGE
9	70				750	20X2 1/2" X 1/4" OA AT DOOR
10	60				800	3/8" X 3/8" SWEDGE
11	70				750	20X2 1/2" X 1/4" OA AT DOOR
12	60				800	3/8" X 3/8" SWEDGE
13	70				750	20X2 1/2" X 1/4" OA AT DOOR
14	60				800	3/8" X 3/8" SWEDGE
15	70				750	20X2 1/2" X 1/4" OA AT DOOR
16	60				800	3/8" X 3/8" SWEDGE
17	70				750	20X2 1/2" X 1/4" OA AT DOOR
18	60				800	3/8" X 3/8" SWEDGE
19	70				750	20X2 1/2" X 1/4" OA AT DOOR
20	60				800	3/8" X 3/8" SWEDGE
21	70				750	20X2 1/2" X 1/4" OA AT DOOR
22	60				800	3/8" X 3/8" SWEDGE
23	70				750	20X2 1/2" X 1/4" OA AT DOOR
24	60				800	3/8" X 3/8" SWEDGE
25	70				750	20X2 1/2" X 1/4" OA AT DOOR
26	60				800	3/8" X 3/8" SWEDGE
27	70				750	20X2 1/2" X 1/4" OA AT DOOR
28	60				800	3/8" X 3/8" SWEDGE
29	70				750	20X2 1/2" X 1/4" OA AT DOOR
30	60				800	3/8" X 3/8" SWEDGE
31	70				750	20X2 1/2" X 1/4" OA AT DOOR
32	60				800	3/8" X 3/8" SWEDGE
33	70				750	20X2 1/2" X 1/4" OA AT DOOR
34	60				800	3/8" X 3/8" SWEDGE
35	70				750	20X2 1/2" X 1/4" OA AT DOOR
36	60				800	3/8" X 3/8" SWEDGE
37	70				750	20X2 1/2" X 1/4" OA AT DOOR
38	60				800	3/8" X 3/8" SWEDGE
39	70				750	20X2 1/2" X 1/4" OA AT DOOR
40	60				800	3/8" X 3/8" SWEDGE
41	70				750	20X2 1/2" X 1/4" OA AT DOOR
42	60				800	3/8" X 3/8" SWEDGE
43	70				750	20X2 1/2" X 1/4" OA AT DOOR
44	60				800	3/8" X 3/8" SWEDGE
45	70				750	20X2 1/2" X 1/4" OA AT DOOR
46	60				800	3/8" X 3/8" SWEDGE
47	70				750	20X2 1/2" X 1/4" OA AT DOOR
48	60				800	3/8" X 3/8" SWEDGE

PLAN VIEW OF BHDS. ON MAIN DECK AFTER
SIDE SHELL WEBS:-6'x4'x1/2" O.A.