



TECHNICAL ADDENDUM #1

The following changes in the tender documents are effective immediately. This addendum will form part of the contract documents.

I TERMS OF REFERENCE DOCUMENT

I.1 SECTION 1.6 – SUMMARY OF WORK

- .1 Add the following to 'Items Supplied by Departmental Representative':
 - .1 Item 1.6.5.3: Install and connect AAFC supplied fixtures onto suspended lighting canopies as per Appendix 'E' (attached as part of this Addendum.
 - .2 Item 1.6.5.4: Assemble and install AAFC supplied operable suspended lighting canopies as per Appendix 'E' (attached as part of this Addendum)

I.2 SECTION 4 – GREENHOUSE REQUIREMENTS

- .1 Add the following to Item 4.1.1 'Exterior/Interior Enclosure'
 - .1.1 Greenhouse structure to be capable of supporting suspended lighting canopies and greenhouse lighting fixture (ie supplemental lighting).
- .2 Revise Item 4.3.5 to read Greenhouse Growth Lighting Fixtures (Supplemental Lighting) as follows:
 - .1 Install and connect AAFC supplied fixtures onto suspended lighting canopies as per Appendix 'E' (attached as part of this Addendum.
- .3 Add Item 4.1.7 Operable Suspended Lighting Canopies as follows:
 - .1 Assemble and install AAFC supplied operable suspended lighting canopies as per Appendix 'E' (attached as part of this Addendum)

I.3 SECTION 3 GENERAL PERFORMANCE REQUIREMENTS

- .1 Add the following to Item 3.5.6 'Emergency Power Distribution'
 - .10 Fuel storage tank and concrete transfer pad to be constructed to current CCME guidelines
 - .11 The concrete transfer pad shall meet:
 - .1 the "Canadian Environmental Protection Act - Storage Tank Systems for Petroleum Products and Allied Petroleum Products Regulations" (CEPA)
 - .2 "Spill Containment at Product Transfer Areas - Development of Generic Designs" (SCPTA) prepared by Jacques Whitford.
 - .12 Submit Shop Drawings for concrete transfer pad which shall bear the stamp and signature of a professional engineer
 - .13 Prior to first transfer of petroleum, submit as-built drawings bearing the stamp and signature of a professional engineer which show
 - .1 the outline of all tanks;
 - .2 the centreline of all piping;
 - .3 the centreline of all underground electrical power and monitor sensor conduits;
 - .4 the building foundation outlines;



- .5 the property lines; and
- .6 the secondary containment systems.

I.4 APPENDIX D

.I Drawing A I

- .I Revise Note I to read as follows: "Diesel generator complete with storage tank on concrete pad and concrete transfer pad"

I.5 APPENDIX 'E' (ADDED THIS ADDENDUM)

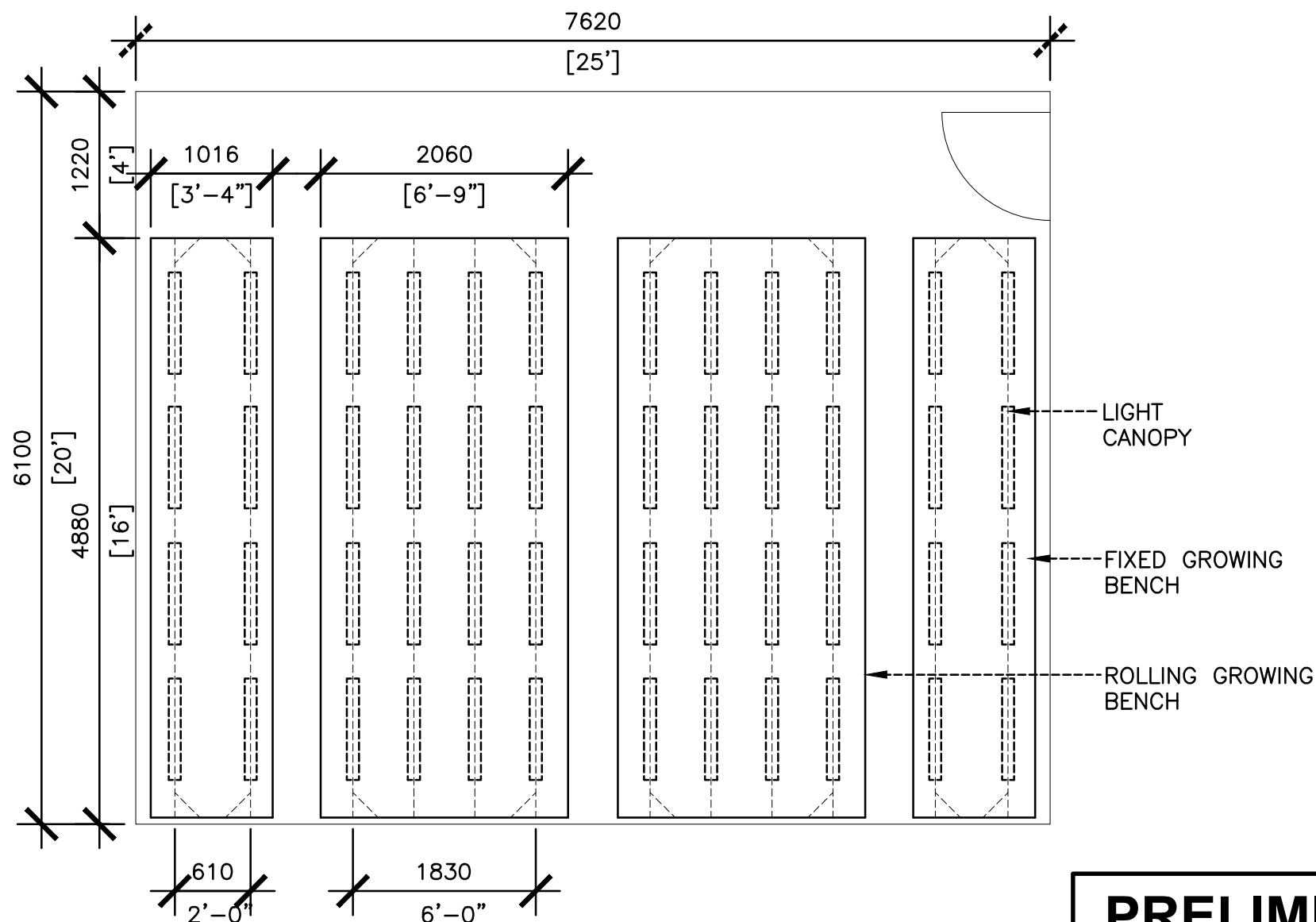
.I Greenhouse Operable Suspended Lighting Canopies

- .I Assemble and install AAFC supplied material for total of 24 canopies (6 compartments x 4 canopies/compartments)
- .2 Canopy size:
 - .1 5030 X 1830 (16'6"x6'0") (2 canopies per compartment)
 - .2 5030 X 610 (16'6"x 2') (2 canopies per compartment)
- .3 Assemble / Install as per attached drawings
- .4 Canopy height to be adjustable from 7' to 10' above floor finish
- .5 List of components per canopy as follows:
 - .1 24 pieces 3' long of #A-1200, 12 gauge, SilverGalv finish
 - .2 24 pieces 7' long of #A-1200, 12 gauge, SilverGalv finish
 - .3 60 pieces 17'0" long of # E-1200, 12 gauge, SilverGalv finish
 - .4 288 pieces # A-100 regular spring nut (3/8")
 - .5 288 pieces # E-142 Hex Head Cap Screw (3/8" x 1")
 - .6 96 Angle Fittings # AB-239-3
 - .7 96 pieces #H 122 3/8 Trapnut Strut Fasteners
 - .8 96 pieces # E120 3/8 Swivel Eyes
 - .9 6 six (6) feet # H-104 – 3/8 hanger rod / continuous thread
 - .10 576 Surface Raceway Systems # A-854
 - .11 192 nuts and bolts (3/8" x 3") to install angle fittings onto the E-12000 and A-1200 channels



.2 Greenhouse Growth Lighting Fixtures (Supplemental Lighting)

- .1 Supply & install in the GH main corridor 120/240 V. electrical panels with breakers for the 6 GH compartments to feed growth light fixtures
- .2 Install and connect AAFC supplied fixtures onto suspended lighting canopies as follows:
 - .1 In each of the 6 GH compartments, a total of 48 "T5" fluorescent fixtures (grand total of 288 fixtures)
 - .2 4. tubes of 54W/ fixture
 - .3 Voltage: 120 V
 - .4 Model equivalent to PEERLESS #NSL-W-4-454-SYM-MR
 - .5 Approximate dimensions are 4.5" wide x 46.5" long x 3 1/2" thick
 - .6 DB to supply and install flexible conduits and connectors to allow for canopy movement
 - .7 Growth light fixtures to be controlled by greenhouse control system
 - .8 DB to supply twist-lock devices (plugs and receptacles for each 20A circuit (120V)



DO NOT SCALE DRAWINGS

Project title/Titre du projet

MORDEN GREENHOUSE / HEADER HOUSE

MORDEN RESEARCH STATION

Drawing title/Titre du dessin

GREENHOUSE LIGHTING CANOPY PLAN

Approved by/Approuve par

**PWGSC Project Manager/Administrateur
de Projets TPSGC**

1:50

Designed by/Concept par

PWSC, Architectural and Engineering Resources Manager/	
VALUE	

/	Date/Date
---	-----------

Drawn by/Dessine par
G.DARCHE

Project No./No. du projet	R.058448.001
---------------------------	--------------

Sheet/ _____

Revised
Revised

PRELIMINARY
NOT FOR CONSTRUCTION

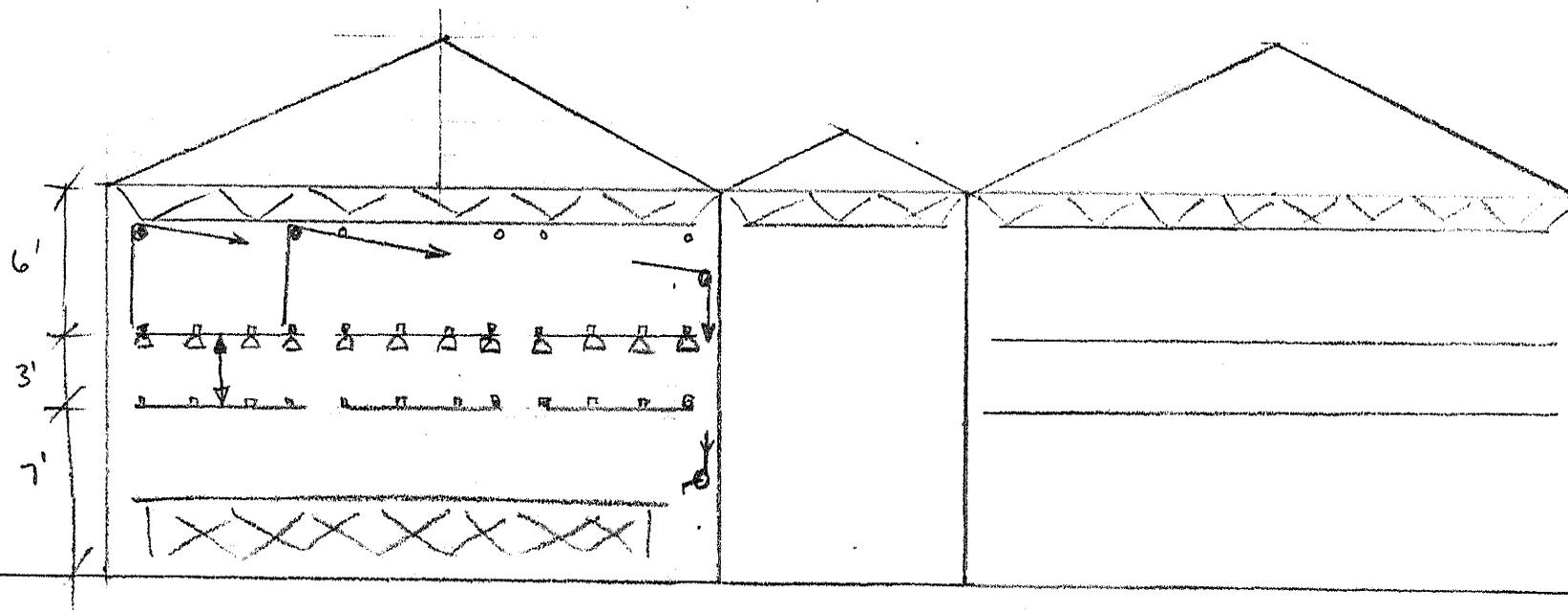


Public Works and
Government Services
Canada

Travaux publics et
Services gouvernementaux
Canada

REAL PROPERTY SERVICES
Western Region

SERVICES IMMOBILIERS



DO NOT SCALE DRAWINGS

PRELIMINARY
NOT FOR CONSTRUCTION

Project title/Titre du projet MORDEN GREENHOUSE / HEADER HOUSE MORDEN RESEARCH STATION	Drawing title/Titre du dessin GREENHOUSE LIGHTING CANOPY SKETCH SECTION	Approved by/Approuvé par	PWGSC Project Manager/Administrateur de Projets TPSC G.MIVILLE		
		Designed by/Concept par	PWGSC, Architectural and Engineering Resources Manager/ VALUE	Date/Date	
		Drawn by/Dessiné par G.DARCHE	Project No./No. du projet R.058448.001	Sheet/ -----	Revision/ Revision

FORM 3 - A10 (4-6-03/01)



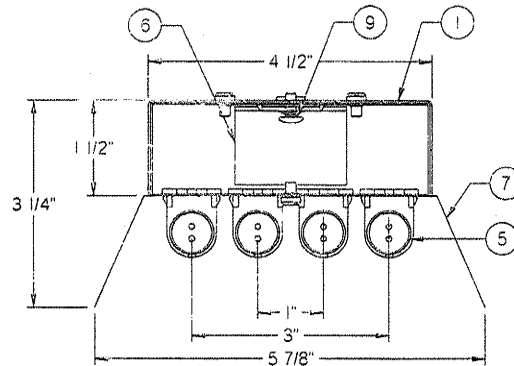
Public Works and
Government Services
Canada

Travaux publics et
Services gouvernementaux
Canada

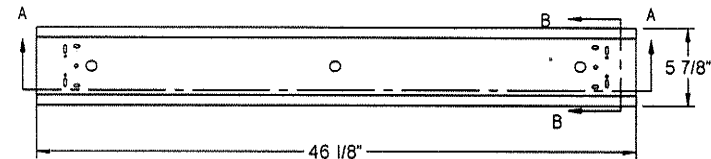
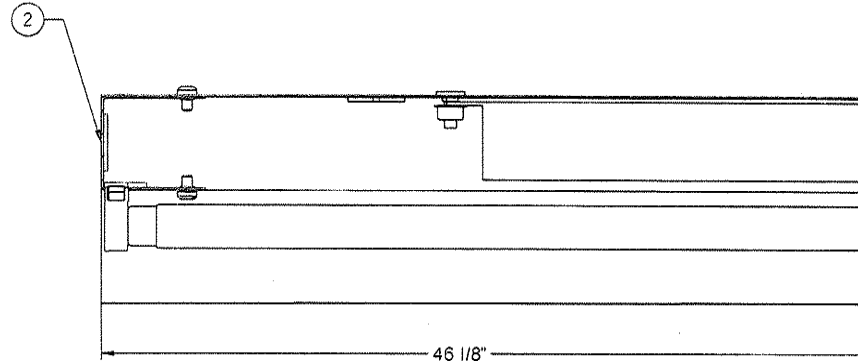
REAL PROPERTY SERVICES
Western Region

SERVICES IMMOBILIERS

SECTION B-B



SECTION A-A



	14	
	13	
	12	
	11	
	10	
VIS	9	SCREW
	8	
REFLECTEUR MR 91% REFLECTIVITE	7	REFLECTOR MR 91% REFLECTIVITY
BALLAST	6	BALLAST
DOUILLE	5	LAMPHOLDER
COUVERCLE	4	
	3	
EMBOUT ET SUPPORT DE DOUILLE	2	END WITH SOCKET BRACKET
BOUTIER	1	HOUSING

FINISH:
BAKED WHITE ENAMEL OVER A PHOSPHATE BASE.
FINI:
EMAIL BLANC CUIT SUR BASE PHOSPHATE.

SPECIFICATIONS:

PROJET / PROJECT:	TYPE	DATE
SE		11/08/30

CIE PEERLESS ELECTRIQUE LTÉE PEERLESS ELECTRIC CO. LTD. 9145 RUE BOVIN, LABALLE, QUE. H8R 2E5 161 BARTLEY DRIVE, TORONTO, ONT. M4A 1E6				DESCRIPTION SURFACE MTD FLUORESCENT FLUORESCENT MONTE EN SURFACE	
WATTS	VOLTS	HZ	ECHELLE SCALE	DATE	CAT. NO.
4 x 54 W		60	N.T.S.	11/08/30	NSL-W-4-454-SYM-MR
DESSIN PAR DRAWING BY: EJ				VARIANT	REV. 0

THE DATA AND INFORMATION DISCLOSED ON THIS DRAWING ARE THE EXCLUSIVE PROPERTY OF PEERLESS ELECTRIC CO. LTD. AND MAY BE THE SUBJECT OF CANADIAN AND FOREIGN PATENTS OR APPLICATIONS, REPRODUCTIONS, COPYING, DISCLOSURE OR USE OF THIS DRAWING, DATA AND INFORMATION WITHOUT THE WRITTEN PERMISSION OF PEERLESS ELECTRIC CO. LTD. IS PROHIBITED.

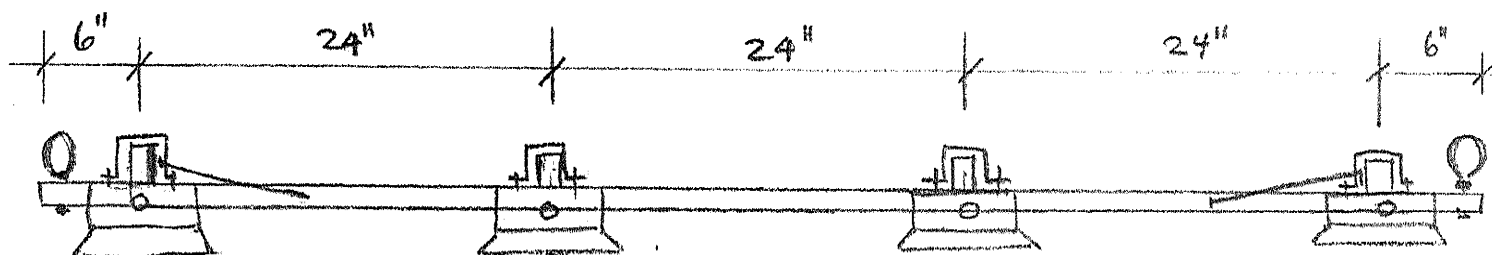
DO NOT SCALE DRAWINGS

NOT FOR CONSTRUCTION

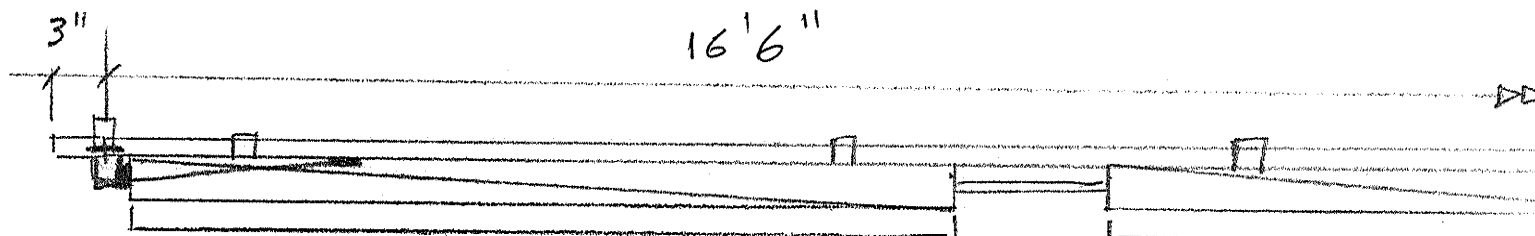
Project Title/Titre du projet MORDEN GREENHOUSE / HEADER HOUSE MORDEN RESEARCH STATION	Drawing Title/Titre du dessin GREENHOUSE LIGHTING CANOPY LIGHT FIXTURE (AAFC SUPPLIED)	Approved by/Approuvé par G.D'ARCHE	PWOSC Project Manager/Administrateur de Projets TPSC G.MIVILLE	Date/Date
		Designed by/Concept par	PWOSC Architectural and Engineering Resource Manager/ VALUE	
		Drawn by/Dessiné par	Project No./No. du projet R.058448.001	Sheet/ -----



SECTION THRU 16 FIXTURE LIGHT CANOPY



2-2'



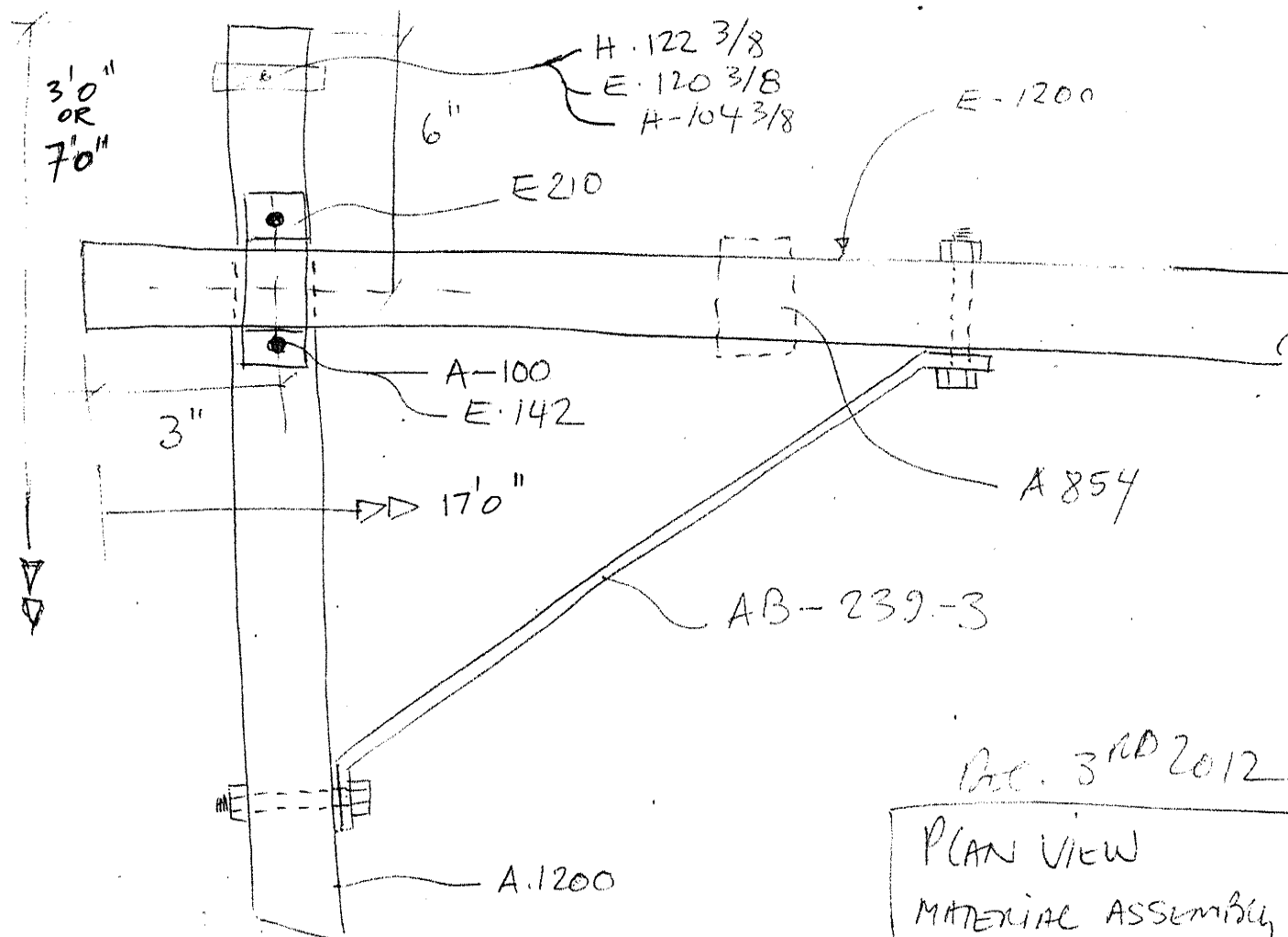
4-4'

Scale

DO NOT SCALE DRAWINGS

PRELIMINARY
NOT FOR CONSTRUCTION

Project title/Titre du projet MORDEN GREENHOUSE / HEADER HOUSE MORDEN RESEARCH STATION	Drawing title/Titre du dessin GREENHOUSE LIGHTING CANOPY SKETCH SECTION	Approved by/Approuvé par Designed by/Conçu par Drawn by/Dessiné par G.DARCHE	PWGC Project Manager/Administrateur de Projets TPSC G.MIVILLE PMSEA, Architectural and Engineering Resources Manager/VALUE Project No./No. du projet R.058448.001	Date/Date Sheet/ -----	Revision/ Revision
---	--	--	--	--	------------------------------



Dec. 3rd 2012

PLAN VIEW
MATERIAL ASSEMBLY
MICROSCOPY

ARY

DO NOT SCALE DRAWINGS

NOT FOR CONSTRUCTION

Project title/Titre du projet

MORDEN GREENHOUSE / HEADER HOUSE

MORDEN RESEARCH STATION

Drawing title/Titre du dessin

GREENHOUSE LIGHTING CANOPY

PLAN SKETCH SHOWING CORNER REINFORCEMENT

Approved by/Approuve par

**PWOSC Project Manager/Administrateur
de Projets TPSGC**
S.MIVILLE

Designed by/Concept par

PMAC, Architectural and Engineering Resources Manager,
VALUE

✓	Date/Date
---	-----------

Drawn by/Dessiné par
G.DARCHE

Project No./No. du projet
R.058448.001

Sheet/

Revision
Revisor