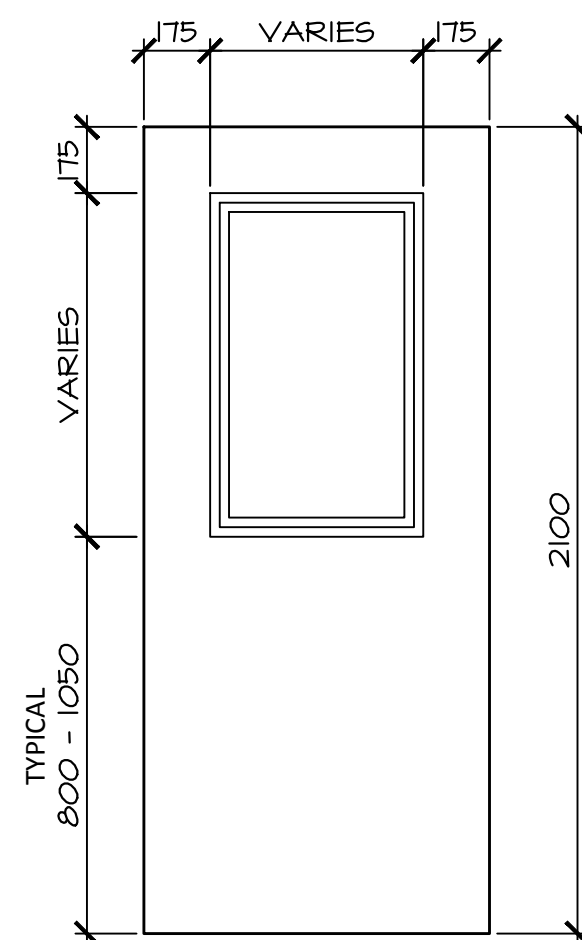
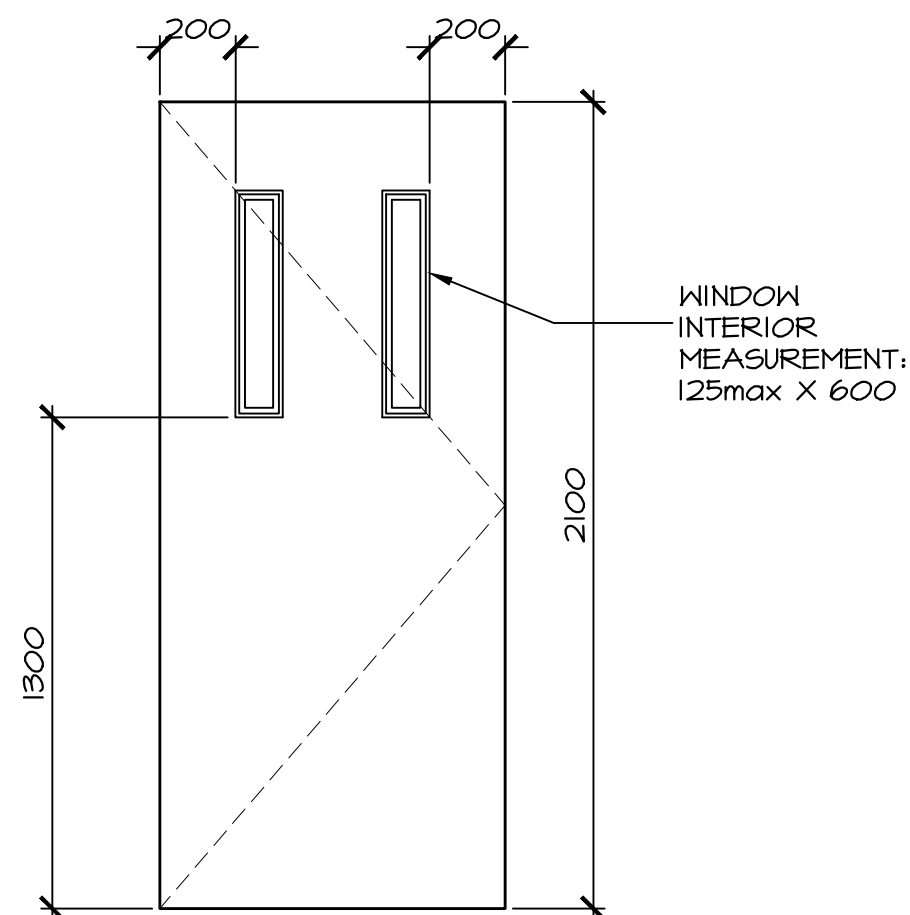


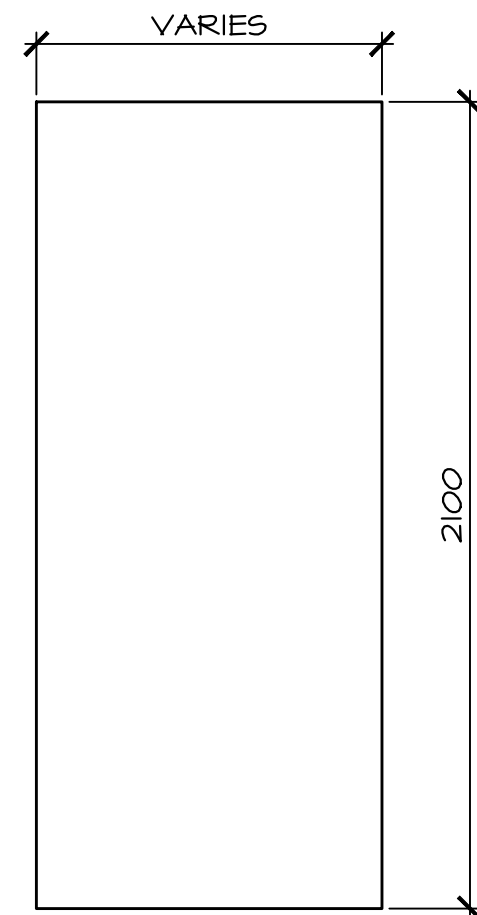
STYLE A - DOUBLE
HALF-GLASS
- MAIN ENTRANCE
- SECONDARY ENTRANCES



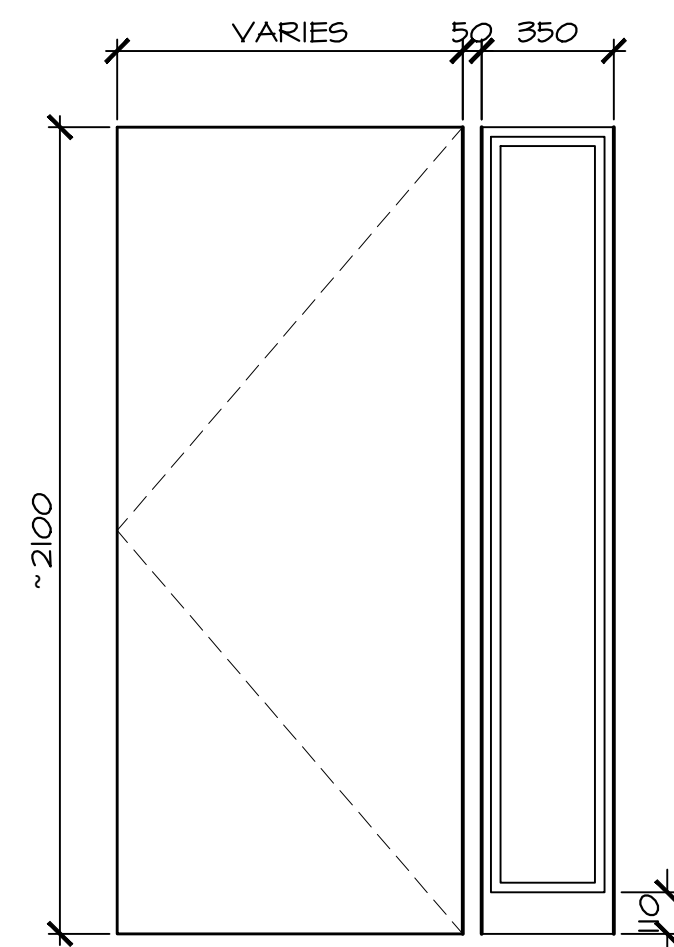
STYLE B -
HALF-GLASS
- OFFICES
(ALTERNATIVE 1)
- CORRIDORS
- CONTROL POST



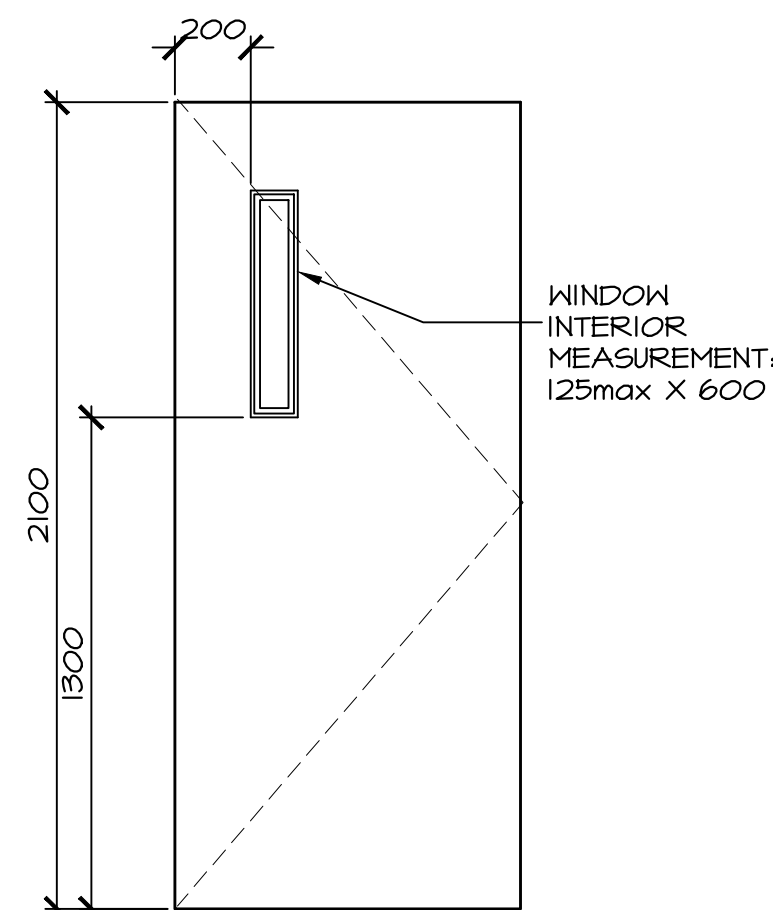
STYLE D - DOUBLE
PORTHOLES
- SECURITY EXTERIOR
ENTRANCES
- STAIRWAYS



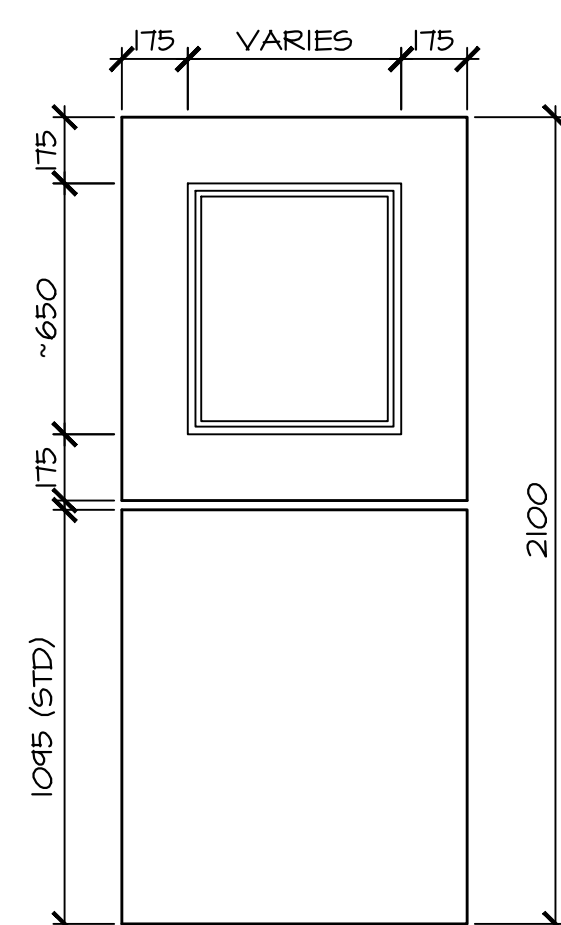
STYLE E - SOLID
(FLUSH)
- SERVICE SHAFTS
- WASHROOMS
- MECHANICAL
ROOMS



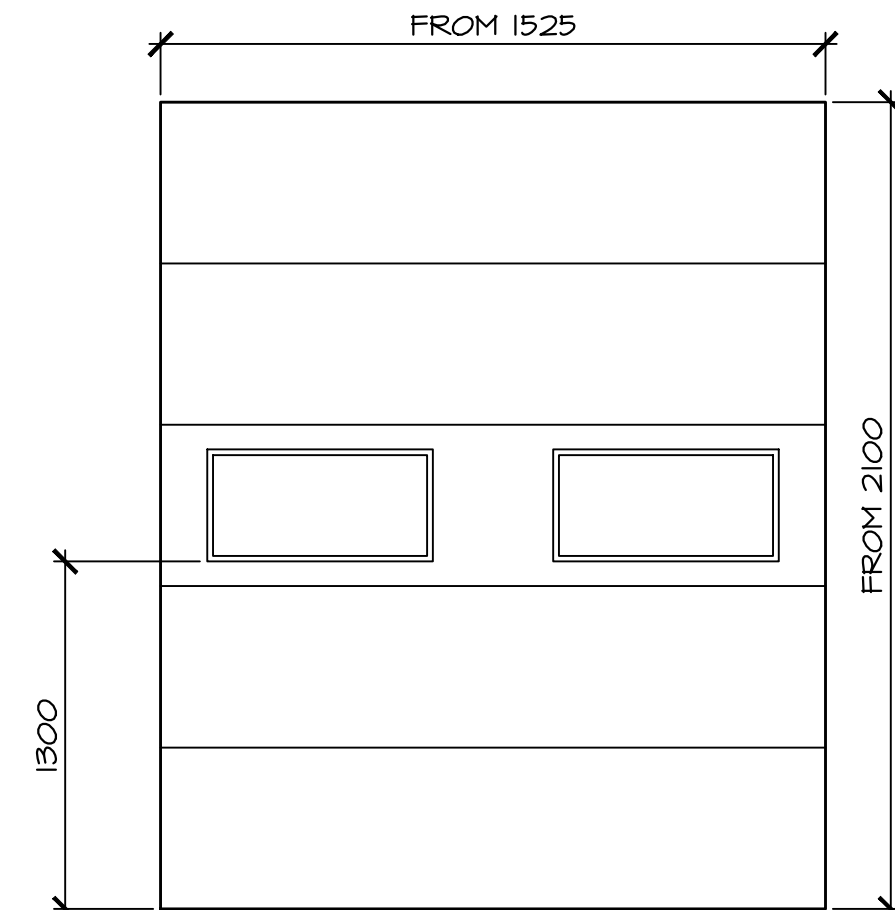
STYLE B2 - SIDE
WINDOW
- OFFICES
(ALTERNATIVE 2)



STYLE C - LONG
PORTHOLE
- ROOMS REQUIRING VISUAL
CHECK
- GENERALLY ALL ROOMS
NOT SPECIFICALLY LISTED



STYLE F - DUTCH
DOOR
- COUNTER
SERVICE



STYLE H - OVERHEAD
- SHIPPING/RECEIVING
- SHOP SUPPLY
- AREAS REQUIRING HIGH OPENINGS
FOR CLEARANCE

0	GENERIC	JAN, 2012
revisions		date

project
**GENERIC SUPPORT
BUILDING**
INSIDE AND OUTSIDE
PERIMETER

drawing
DOOR STYLES

designed	conçu
date	
drawn	dessiné
date	
approved	approuvé
date	
Tender	Soumission

PWSC Project Manager	Administrateur de projets TPSC
project number	no. du projet
R.043959.001 / R.043958.001	

drawing no.	no. du dessin
A-4	