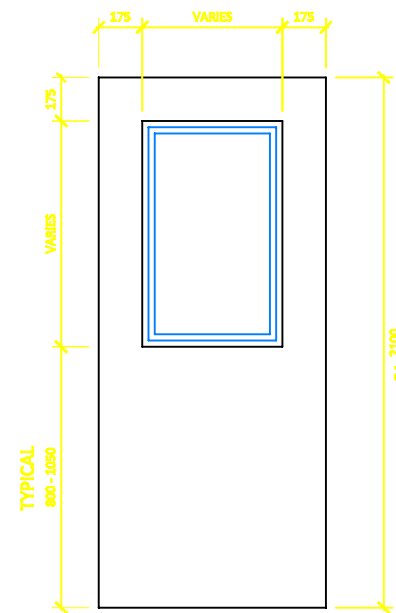
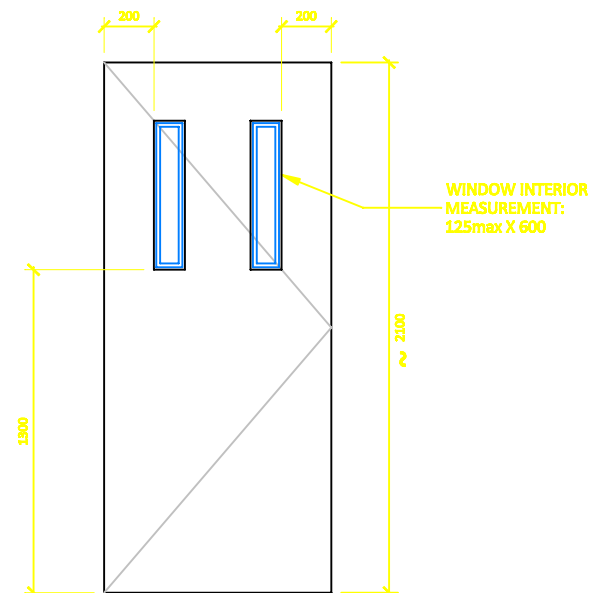


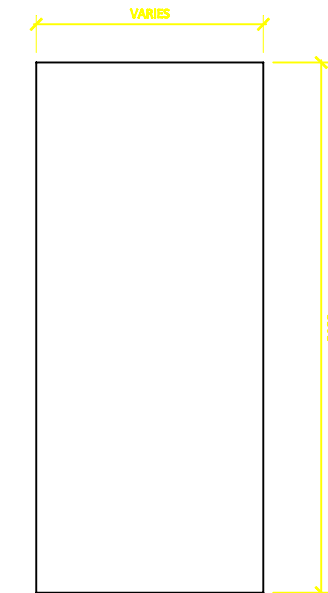
**STYLE A - DOUBLE
HALF-GLASS**
- MAIN ENTRANCE
- SECONDARY ENTRANCES



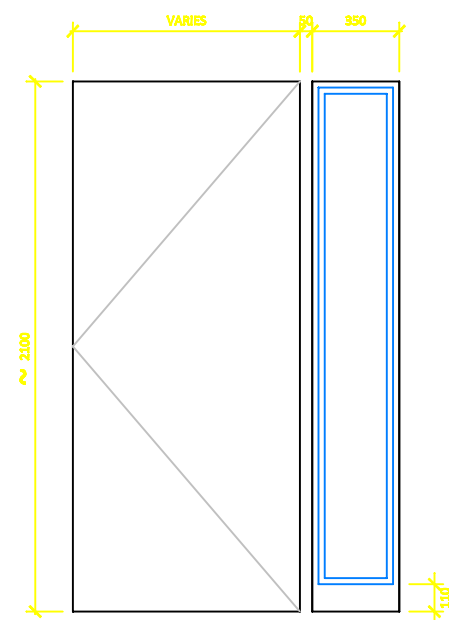
STYLE B - HALF-GLASS
- OFFICES (ALTERNATIVE 1)
- CORRIDORS
- CONTROL POST



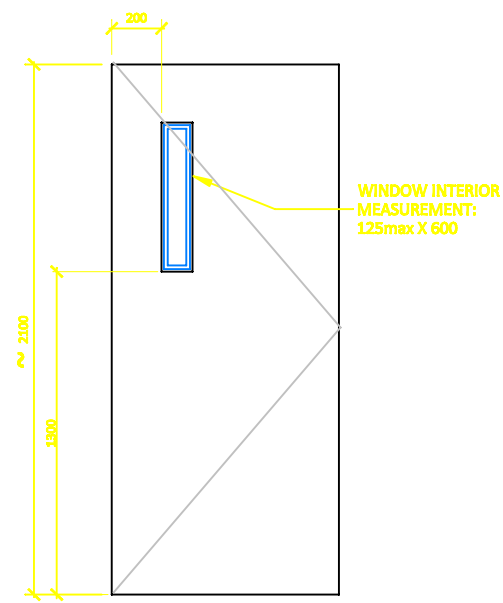
**STYLE D - DOUBLE
LONG PORTHOLES**
- SECURITY EXTERIOR ENTRANCES
- STAIRWAYS



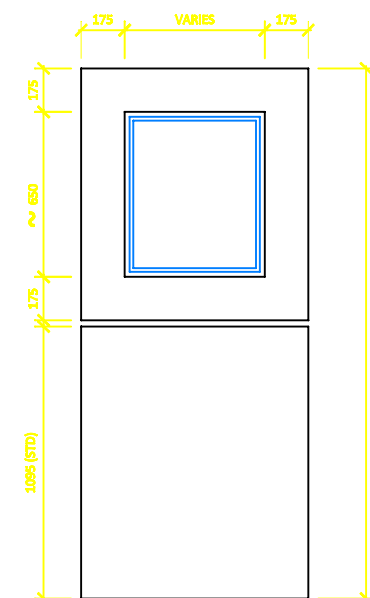
STYLE E - SOLID (FLUSH)
- SERVICE SHAFTS
- WASHROOMS
- MECHANICAL ROOMS



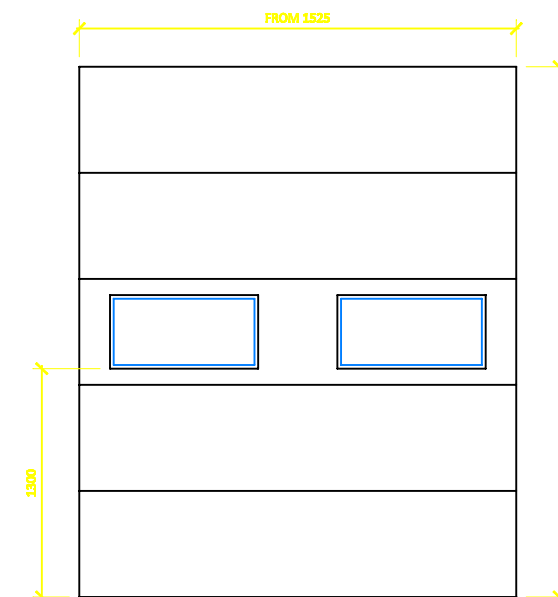
STYLE B2 - SIDE WINDOW
- OFFICES (ALTERNATIVE 2)



STYLE C - LONG PORTHOLE
- ROOMS REQUIRING VISUAL CHECK
- GENERALLY ALL ROOMS NOT
SPECIFICALLY LISTED



STYLE F - DUTCH DOOR
- COUNTER SERVICE



STYLE H - OVERHEAD
- SHIPPING/RECEIVING
- SHOP SUPPLY
- AREAS REQUIRING HIGH
OPENINGS FOR CLEARANCE

INSTITUTION /
ÉTABLISSEMENT :

Generic Support
Building Inside and
Outside Perimeter
GI /GO

LEGEND /
LÉGENDE :

ISSUE DATE /
DATE D'ÉMISSION :
2011-11-01