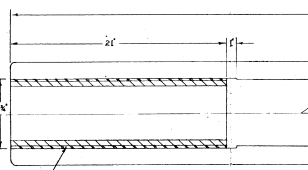
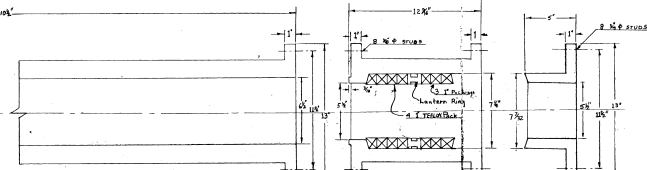


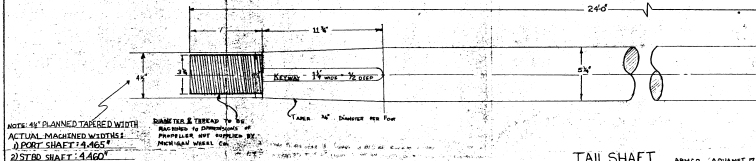
SHAFT BOSSING 10 OD - 6 1/2 ID Aluminum 6061



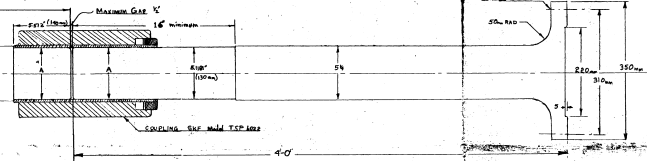
STERN TUBE 10 OD - 6 1/2 ID Aluminum 6061



STUFFING BOX



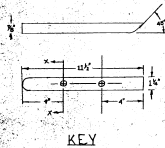
TAIL SHAFT ARMED - ADJUST 17



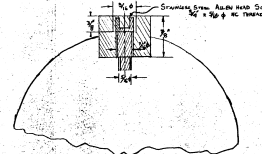
INTERMEDIATE SHAFT FORGED STEEL SAE 1026

NOTE: 4" PLANNED TAPERED WIDTH
ACTUAL MACHINED WIDTHS
APPROXIMATE 1/4" TAPER
2.5" DIA. SHAFT 4.460"

DIAMETER & TAPER TO BE
MAINTAINED TO PREVENT
PROPELLER HULL CORROSION
DURING SERVICE



KEY



SECTION X-X

DIAMETER A 2.5" DIA 2.5" DIA
MACHINED FROM THE END 2.52 MACHIN

NORMALIZED & TEMPERED
APPROVED BY C.E. 1/25/76

APPROVAL		
AUTHORITY	DATE	REMARKS
REVISIONS		
DATE	REMARKS	
5/25/76	DARKENING SHAFT WIDTH UPDATE BY SC	

BRETON INDUSTRIAL & MARINE LTD.
PORT HAWKESBURY NOVA SCOTIA

STERN TUBE & SHAFING

Scale 1" = 16"

100% ALUMINUM EXTRUSION VEHICLE

DESIGNATION OF EQUIPMENT

SCALE	3 1/2" = 1"	APP.
TOWN	1/2"	DATE
DRAW NO.	100-100	1/2 5 1976