

REFERENCES		
WHEELHOUSE DA BIDS UNDER	72 - 35	
NAVIGATION LIGHTS	72 - 322	
A/C ENCLOSURE AND Binnacle PLATFORM	72 - 180	

GENERAL NOTES

NO.	REVISION	by	date

prints issued

C.C.G.S. ANN HARVEY  
APRIL 1987  
AS FITTED

Halifax-Dartmouth Industries Ltd.

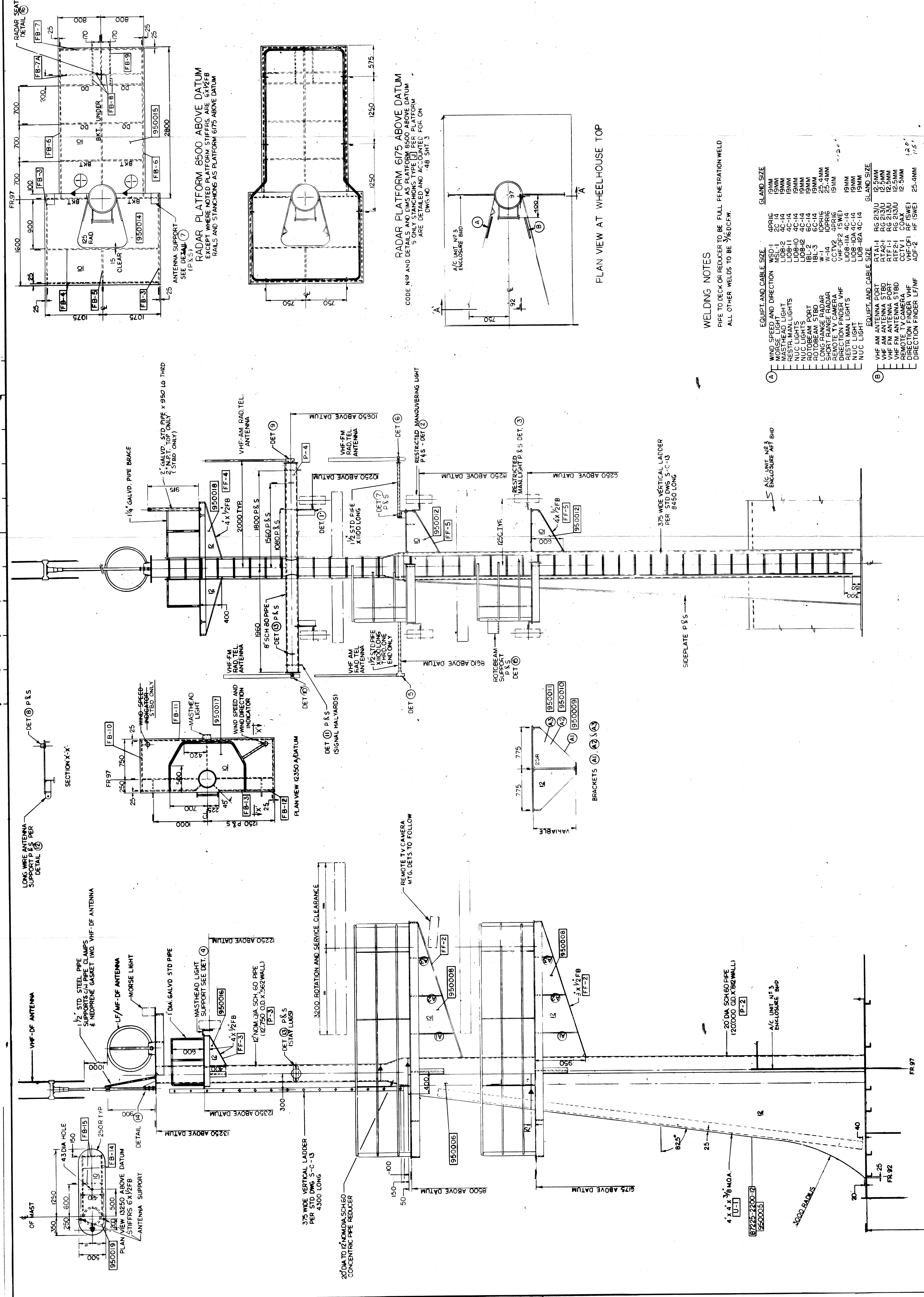
Canadian Coast Guard  
canadienne

PROJECT TYPE 1000 NAVY'S VESSEL

TITLE MAIN MAST

APPR.	SER.	SER.	APPR.	SER.	APPR.	DATE	REVISION N°

DRG. N° 72-54 Sheet 1 of 2



WELDING NOTES  
PIPE TO DECK OR REDUCER TO BE FULL PENETRATION WELD  
ALL OTHER WELDS TO BE 3/16 DCEW.

EQUIPT AND CABLE SIZE	GLAND SIZE
WIND SPEED AND DIRECTION	4PRIG
MASTHEAD LIGHT	4PRIG
REST. MAN. LIGHT	4PRIG
NUC LIGHTS	4PRIG
ROTOBEAM PORT	4PRIG
ROTOBEAM STBD	4PRIG
SHORT RANGE RADAR	4PRIG
REMOTE TV CAMERA	4PRIG
REST. MAN. LIGHTS	4PRIG
NUC LIGHT	4PRIG
WIND SPEED AND DIRECTION	4PRIG
MASTHEAD LIGHT	4PRIG
REST. MAN. LIGHT	4PRIG
NUC LIGHTS	4PRIG
ROTOBEAM PORT	4PRIG
ROTOBEAM STBD	4PRIG
SHORT RANGE RADAR	4PRIG
REMOTE TV CAMERA	4PRIG
REST. MAN. LIGHTS	4PRIG
NUC LIGHT	4PRIG

SECTION A-A

DATUM LINE IS 2250 A/BASE

ELEVATION LOOKING TO PORT