



INDEX

No.: 6

DD.:

Client no. 534236K1 / 534636K1
Pump no
SPN no .00345010
Costumer SWD / SPC

#4320-21-TAM0448

PUMP . F.O. INJECTOR COOLING

Pumptype	MCV.12,5x1-3,2	r.p.m.	3500
Capacity	1,6.M ³ /h...	Man. head.	20 m.
Impeller diam.	125mm	Specific grf.	...
NPSH	.4M	Visc.	...

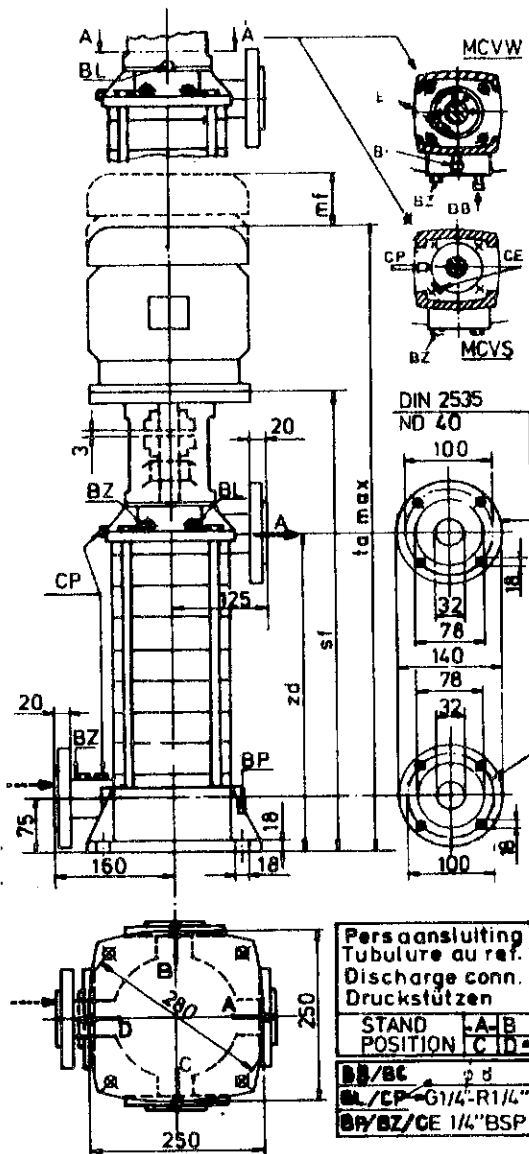
DRIVER

Make:	Leroy Somer	Type	LS90S F165
HP/KW	1,73	r.p.m.	3500

DOCUMENTATION

Curve	...		
Dimension print	MCV/05.02	IEC.	90S..V1
Sectional drw.	MCV/06.01.01		
Parts list	MCV/00345010/018		
Maintenance	MCV/09.01 tm.04		

MOTOR LS90SF165
1,73 kw n=3500 440VΔ



Welding Flange 02197.465

MCV MCVS MCVW	zd	IEC-motor moteur-CEI	sf	ta max	mf	IEC-motor moteur-CEI	sf	ta max	mf
12,5x 1-3,2	244	63 -F115	440	659	75	71 -F130	440	679	75
		80 -F165	460	724	100	90 -F165	460	734	100
12,5x 2-3,2	244	63 -F115	485	704	75	71 -F130	485	724	75
		80 -F165	505	769	100	90S-F165	505	788	100
		90L-F165	505	805	100				
12,5x 3-3,2	289	63 -F115	530	749	75	71 -F130	530	769	75
		80 -F165	550	814	100	90S-F165	550	833	100
		90L-F165	550	850	100	100L-F215	560	896	125
12,5x 4-3,2	334	63 -F115	575	794	75	71 -F130	575	814	75
		80 -F165	595	859	100	90S-F165	595	878	100
		90L-F165	595	895	100	100L-F215	605	941	125
		112M-F215	605	991	125				
12,5x 5-3,2	379	71 -F130	620	859	75	80 -F165	640	904	100
		90L-F165	640	940	100	100L-F215	650	986	125
		112M-F215	650	1036	125	132S-F265	670	1114	150
12,5x 6-3,2	424	71 -F130	665	904	75	80 -F165	685	949	100
		90L-F165	685	985	100	100L-F215	695	1031	125
		112M-F215	695	1081	125	132S-F265	715	1159	150
12,5x 7-3,2	469	71 -F130	710	949	75	80 -F165	730	994	100
		90S-F165	730	1013	100	100L-F215	740	1076	125
		112M-F215	740	1126	125	132S-F265	760	1204	150
12,5x 8-3,2	514	71 -F130	755	994	75	90S-F165	775	1058	100
		80 -F165	775	1039	100	112M-F215	785	1171	125
		132S-F265	805	1249	150	160M-F300	835	1399	175
12,5x 9-3,2	559	71 -F130	800	1039	75	80 -F165	820	1084	100
		90S-F165	820	1103	100	112M-F215	830	1216	125
		132S-F265	850	1294	150	160M-F300	880	1444	175
12,5x 10-3,2	604	80 -F165	865	1129	100	90S-F165	865	1148	100
		90L-F165	865	1165	100	112M-F215	875	1261	125
		132S-F265	895	1339	150	160M-F300	925	1489	175
12,5x 11-3,2	649	80 -F165	910	1174	100	90S-F165	910	1193	100
		90L-F165	910	1210	100	112M-F215	920	1306	125
		132S-F265	940	1384	150				
12,5x 12-3,2	694	80 -F165	955	1219	100	90S-F165	955	1283	100
		90L-F165	955	1255	100	132S-F265	985	1429	150
		160M-F300	1015	1579	175				

Client ref.

534236k1 / 534636k1

Customer

Item no.

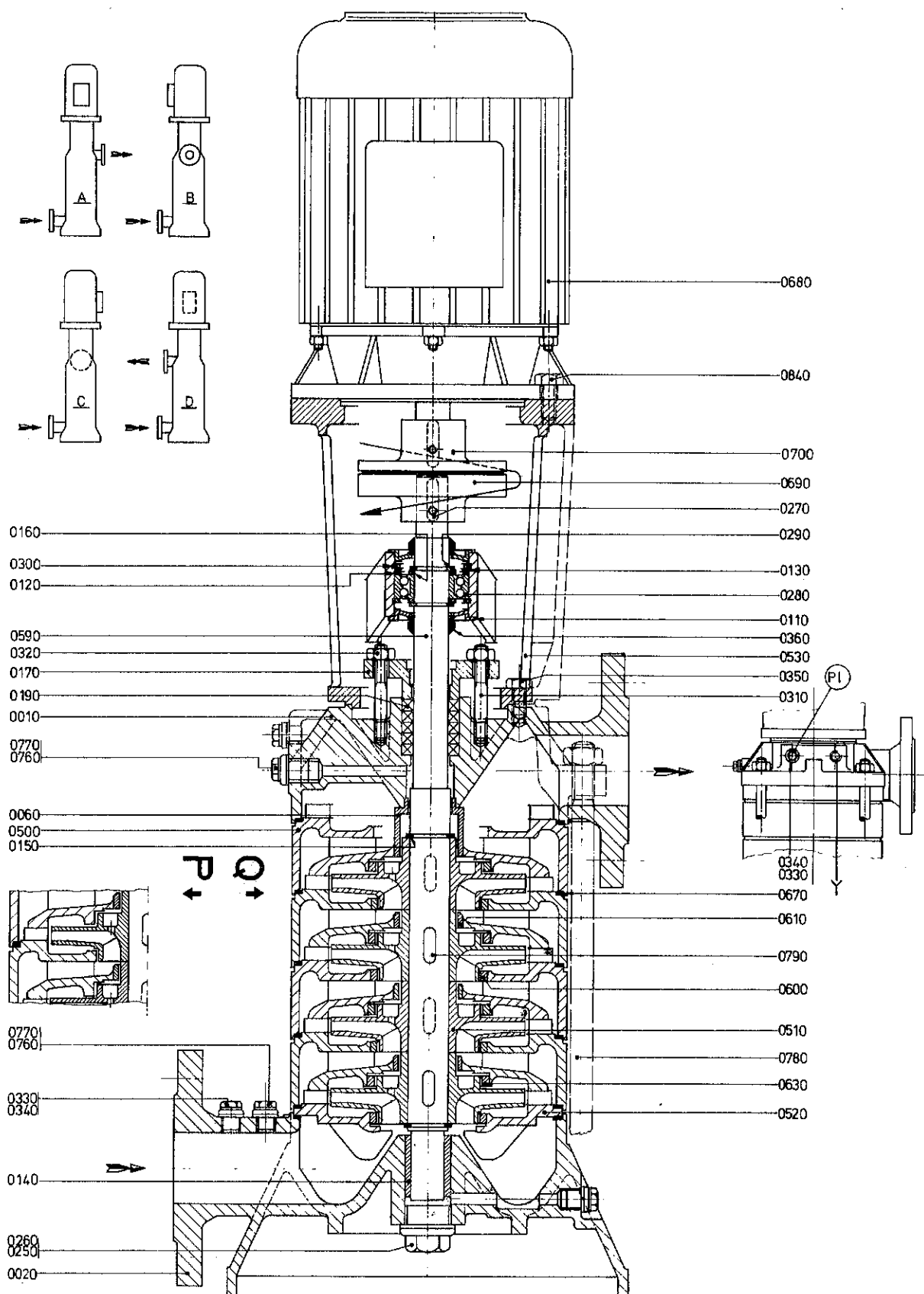
Fuel valve cooling
water pumps

Stork ref.

00.345.010

	Aansluitingen	Raccordements	Anschlüsse	Connections	
BB	Pakkingbuskoeling inlaat	Admission d'eau de re- froidissement du presse-étoupe	Stopfbuchskühlung Eintritt	Stuffingbox cooling inlet	
BC	Pakkingbuskoeling uitlaat	Sortie d'eau de refroidi- sissement du presse- étoupe	Stopfbuchskühlung Austritt	Stuffingbox cooling outlet	
BL	Aftap lekvloeistof	Orifice de vidange du liquide de fuite	Leckflüssigkeits- ablass	Drain drip pocket	
BP	Aftap pomphuis	Orifice de vidange du corps de pompe	Entleerung Pumpen- gehäuse	Drain drip casing	P**
BZ	Manometer aansluiting	Raccord de manomètre	Manometeranschluss auf Druckstutzen	Pressure gauge connection on discharge nozzle	P
CP	Ontlastleiding aansluiting	Connection pour la tuyauterie de décharge	Entlastungsleitungs- anschluss	Balance pipe connection	P
CE	Ontluchting ruimte van mechanische aafdichting	Purge chambre de la garniture mécanique	Entlüftung des Raums der Gleit- ringdichtung	Seal chamber vent	P

A = standaard uitvoering ; construction standard ; Standard Ausführung ; standard construction
D* = niet mogelijk voor ; pas possible pour ; nicht möglich für ; not possible for: MCV/MCVS/MCVW 12,5x1-3,2
P** = afgestopt ; obturé ; verschlossen ; plugged





MCV 12,5 x n - 3,2

MCV/00345010/018
534236K1 / 534636K1

00.345010/345018

Page 1 of 2

Item nr.	Number		Description	Material
	P	Q		
0010	1	1	Discharge casing	Bronze
0020	1	1	Suction casing	Bronze
0060*	1	1	Pressure reducing bush	Bronze
0110	2	2	Bearing cover	Steel
0120**	1	1	Filling ring	Steel
0130**	1	1	Filling ring	Steel
0140*	1	1	Sleeve bearing	Glacier DU
0150*	2	2	Outer circlip	Steel alloy
0160	2	2	Filling ring	Steel
0170	1	1	Gland	Bronze
0190*	5	5	Gland packing	Metallic packing
0250	1	1	Screwed plug 3/4"B.S.P.	Brass
0260	1	1	Joint	Copper
0270*	1	1	Key	Stainless steel
0280*	1	1	Radial ball bearing SKF	----
0290*	2	2	Outer circlip	Steel
0300*	2	2	Inner circlip	Steel
0310	2	2	Gland stud	Steel alloy
0320	2	2	Nut	Brass
0330	6	6	Screwed plug 1/4"B.S.P.	Brass
0340	6	6	Joint	Copper
0350	4	4	Tapbolt	Steel
0360*	2	2	V-ring	Rubber
0500	n****		Stage casing	Bronze
0510*	n	n	Impeller	Bronze (2.10623.12)
0520	1	1	Suction cover	Bronze
0530	1	1	Lantern piece	Cast iron
0590*	1	1	Pump shaft.	Steel alloy
0600*	-	n	Casing wear ring	Bronze
0610*	n-1		Interstage bush	Bronze
0630*	-	n	Casing wear ring	Bronze
0670*	n+1		Joint	Frenzelite
0680	1	1	Flange motor construction	
0690	1	1	Elastic coupling (pump side half)	Cast iron
0700	1	1	Elastic coupling (motor side half)	Cast iron
0760	2	2	Plug	Steel
0770	2	2	Joint	Copper
0780	4	4	Bolt with nut	Steel
0790*	n	n	Key	Steel alloy
0840***	4	4	Tapbolt	Steel

* Recommended spare parts for normal service conditions

** Only for MCV 14axn-5 and MCV 14bxn-5

****n= the number of pressure stages as indicated in the pump type except the one-stage construction, which is equal to the two-stage construction, of which 1 impeller is removed.
Example: MCV 14ax3-5, n= 3, n+1= 4, n-1= 2

1) For type MCV 12,5 Material brass



MCV 12,5 x n - 3,2

MCV/00345010/018
534236K1 / 534636K1
00345010/345018

Page 2 of 2

Item nr.	Number		Description	Material
	P	Q		
0840	4	4	Alan bolt	steel

SECTIONAL DRAWING : MCV/ 06.01.01 , Construction P and Q.