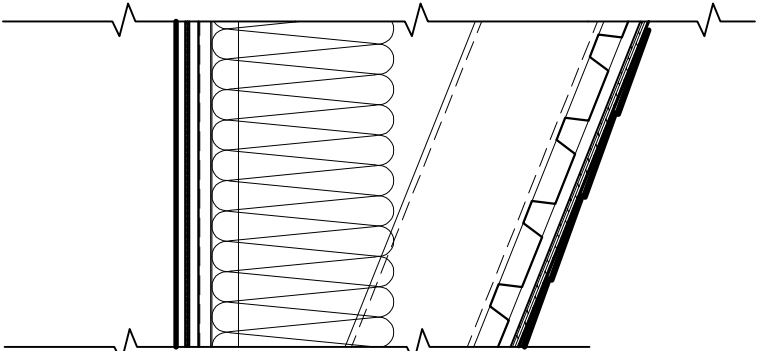



## ROOF TYPES

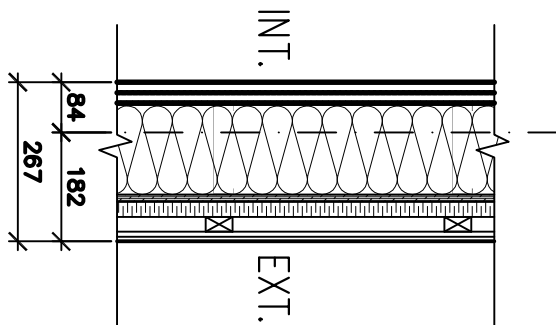
R1

- ASPHALT SHINGLES
- PERFORATED ASPHALT FELT
- ICE & WATER SHIELD TO 900mm FROM ROOF EDGE
- 13mm FIRE RETARDANT PLYWOOD C/W H-CLIPS
- 25x75 FIRE-RETARDANT STRAPPING @ 400o.c.
- 36mm-20 G&S STEEL DECK
- STRUCTURAL STEEL FRAMING (VENTILATED AIRSPACE)
- RSI-8.1 BLOWN-IN CELLULOSE INSULATION
- METAL STUD FRAMING @ 600o.c.
- 16mm TYPE-X GYPSUM BOARD
- VAPOUR BARRIER
- 16mm TYPE-X ABUSE RESISTANT GYPSUM BOARD



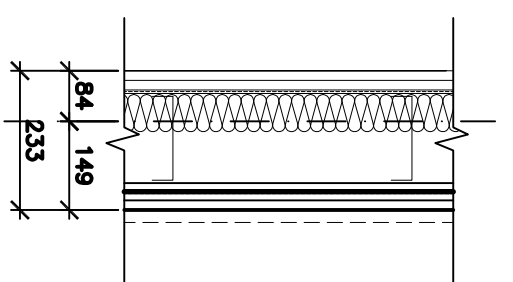
W1

- 16mm ABUSE RESISTANT TYPE-X GYPSUM BOARD
- VAPOUR BARRIER
- 16mm GYPSUM BOARD
- EXPANDED METAL MESH
- 150mm STEEL STUDS @ 400o.c.(BRACED)
- R-20 (150mm) FIBREGLASS FRICION-FIT INSULATION
- 12.5mm PLYWOOD SHEATHING
- 25mm RIGID EXTRUDED POLYSTYRENE TYPE 3 INSULATION
- AIR BARRIER
- 25x45 WOOD VERTICAL STRAPPING @ 400o.c.
- 158x8 COLONIAL SMOOTH CEMENT HORIZ.PLANKS (127mm EXPOSURE)



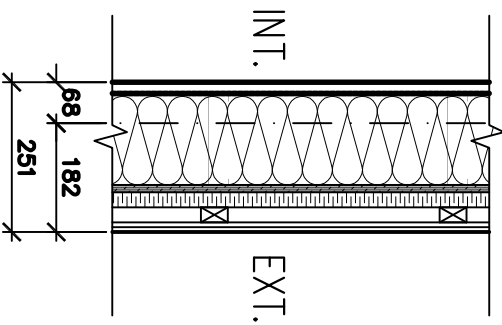
W5

- EXTERNAL CLADDING, STRAPPING & RIGID INSULATION TO BE REMOVED FROM EXISTING TYPE 1 EXTERNAL WALL, AND
- 70mm ACOUSTIC INSULATION
- 13mm HORIZ.RESILIENT METAL CHANNELS @ 300o.c.
- EXPANDED METAL MESH
- 16mm GYPSUM BOARD
- 16mm ABUSE RESISTANT TYPE-X GYPSUM BOARD TO BE ADDED TO NEW INTERNAL FACE



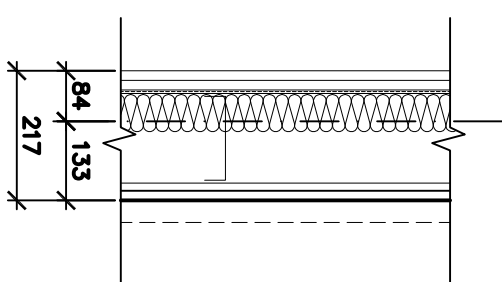
W2

- 16mm ABUSE RESISTANT TYPE-X GYPSUM BOARD
- VAPOUR BARRIER
- 150mm STEEL STUDS @ 400o.c.(BRACED)
- R-20 (150mm) FIBREGLASS FRICION-FIT INSULATION
- 12.5mm PLYWOOD SHEATHING
- 25mm RIGID EXTRUDED POLYSTYRENE TYPE 3 INSULATION
- AIR BARRIER
- 25x45 WOOD VERTICAL STRAPPING @ 400o.c.
- 158x8 COLONIAL SMOOTH CEMENT HORIZ.PLANKS (127mm EXPOSURE)



W6

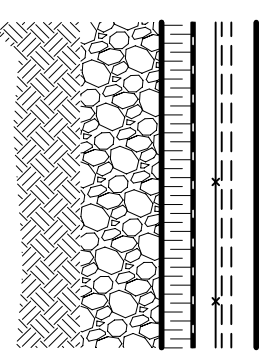
- EXTERNAL CLADDING, STRAPPING & RIGID INSULATION TO BE REMOVED FROM EXISTING TYPE 1 EXTERNAL WALL, AND
- 70mm ACOUSTIC INSULATION
- 13mm HORIZ.RESILIENT METAL CHANNELS @ 300o.c.
- 16mm ABUSE RESISTANT TYPE-X GYPSUM BOARD TO BE ADDED TO NEW INTERNAL FACE



## FLOOR TYPES

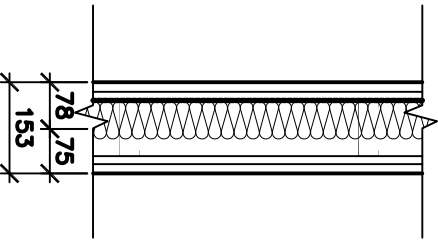
F1

- FLOOR FINISH (SEE FINISH SCHEDULE)
- 100mm CONCRETE SLAB
- RADIANT HEAT PIPING (SEE MECH.)
- CONCRETE REINFORCEMENT MESH - SEE STRUCTURAL
- VAPOUR BARRIER
- 50mm RIGID INSULATION
- 150mm COMPACTED GRANULAR MATERIAL
- UNDISTURBED SOIL



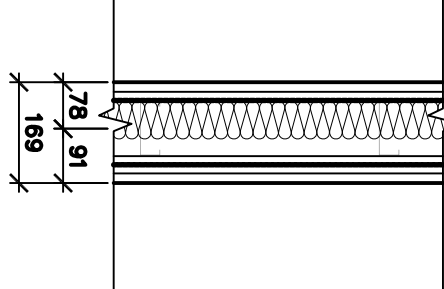
W3

- 16mm ABUSE RESISTANT TYPE-X GYPSUM BOARD
- 16mm GYPSUM BOARD
- EXPANDED METAL MESH
- 92mm (20 GAUGE) METAL STUDS @ 400o.c.
- 63mm SOUND BATT'S BETWEEN STUDS
- 13mm HORIZ.RESILIENT METAL CHANNELS @ 300o.c.
- 16mm ABUSE RESISTANT TYPE-X GYPSUM BOARD



W4

- 16mm ABUSE RESISTANT TYPE-X GYPSUM BOARD
- 16mm GYPSUM BOARD
- EXPANDED METAL MESH
- 92mm (20 GAUGE) METAL STUDS @ 400o.c.
- 63mm SOUND BATT'S BETWEEN STUDS
- 13mm HORIZ.RESILIENT METAL CHANNELS @ 300o.c.
- EXPANDED METAL MESH
- 16mm GYPSUM BOARD
- 16mm ABUSE RESISTANT TYPE-X GYPSUM BOARD

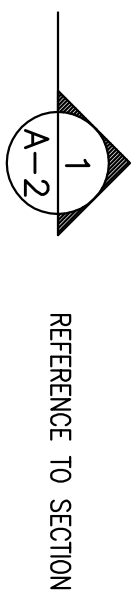


## WALL, FLOOR & ROOF TYPES

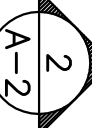
## KEY TO SYMBOLS

### LEGEND

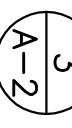
- BULHEAD
- NEW WALL
- FINISH FLOOR 100/000
- ELEVATION MARKER



- ROOM NAME & NUMBER LU-132
- WINDOW TAG (W)
- DOOR TAG (D)
- REFERENCE TO ELEVATION



- WALL & PARTITION TAG
- DOOR TAG
- REFERENCE TO DETAIL



- ROOF & FLOOR TAG



6	TENDER ADDENDUM	MAY 2012
5	STEEL STRUCTURE ADDED	MAY 2012
4	REVISED SCOPE OF WORK	OCT 2011
3	ISSUED FOR FINAL REVIEW	JULY 2011
2	99% REVIEW	2011
1	65% REVIEW	JUNE 2011
revisions		date
project	4 BED SLE EXPANSION	project

## NOVA INSTITUTION FOR WOMEN

TRURO, NS

## FOUNDATION PLAN & LEGENDS

designed	drawn	checked
date	date	date
approved	approved	approved
date	date	date
Tender	Submission	
PMSSC Project Manager	Administrateur de projet PMSSC	
project number	no. du projet	
R.043928.004		

## FOUNDATION / SLAB PLAN

