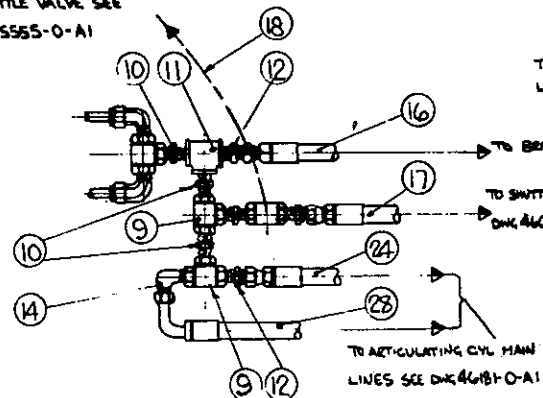


TO SHUTTLE VALVE SEE  
DWG 45555-0-A1

SECTION "A-A"

TO HYDRAULIC POWER  
UNIT DWG 46044-0-A1TO SHUTTLE VALVE SEE  
DWG 46065-0-A1TO ARTICULATING CYL MAIN  
LINES SEE DWG 46181-0-A1TO HYDRAULIC POWER  
UNIT DWG 46044-0-A1This drawing, in design and detail is the property of  
**JOHN T. HEPBURN, LIMITED**  
and must not be used or copied except in connection  
with our work, and only after instructions are  
given from this company. All rights of design or  
invention are reserved.

BRAKE CYLINDER CONNECTION

17" DIA HOLES  
FOR (3)

DETAIL OF ITEM (5)

DRILL &amp; TAP THROUGH 1/4" N.P.T.

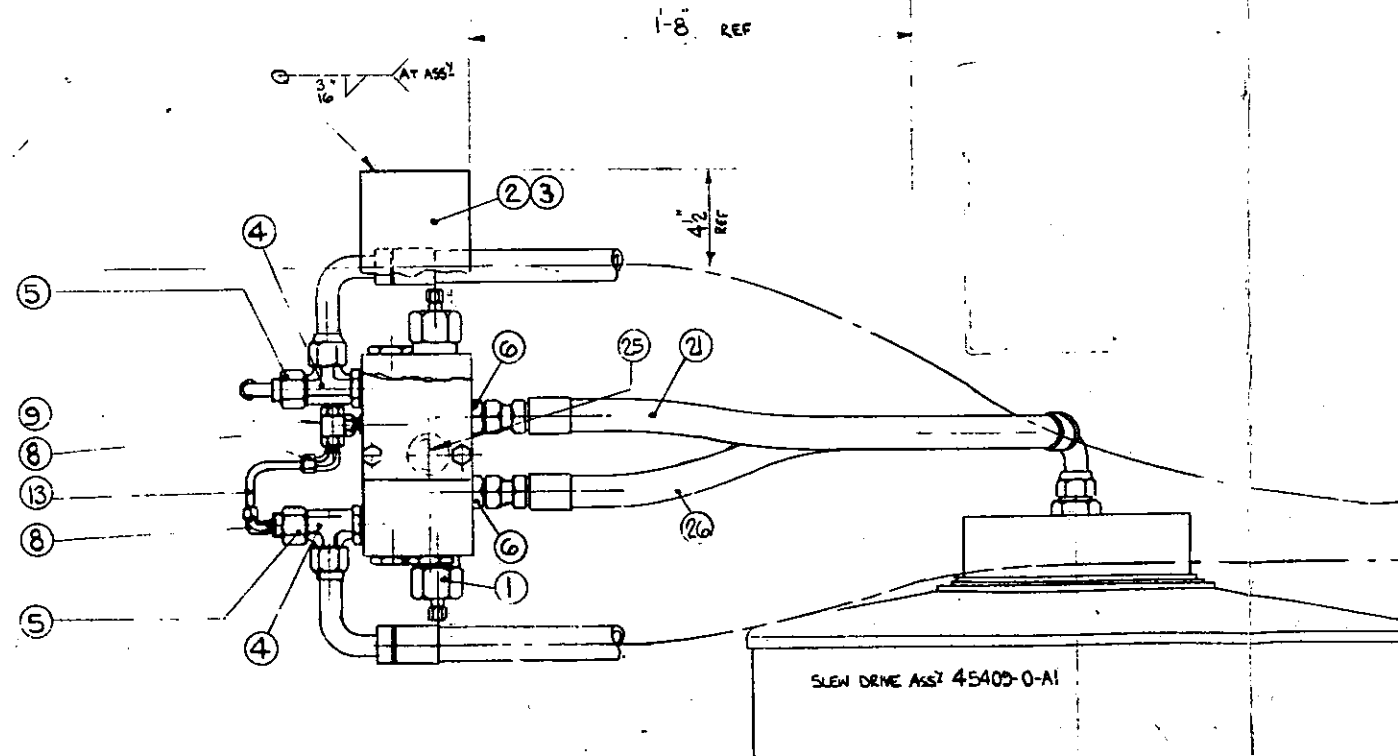
MOUNTING PLATE DETAIL

(2)

ITEM	DESCRIPTION	QTY	REMARKS
1	28 HOSE ASSY: 7308-2924 / 1/2" CAT HOSE 2'-0" LG	1	GATES
	7334-0071 / FERRULES 7266-0036 2 OFF		
1	27 HOSE ASSY: 7303-6924 / 1/2" CAT HOSE 5'-9" LG	1	GATES
	7303-6924 / FERRULES 7266-0017 2 OFF		
1	26 HOSE ASSY: 7303-6924 / 1/2" CAT HOSE 5'-5" LG	1	GATES
	7303-6924 / FERRULES 7266-0017 2 OFF		
1	25 O-RING PLUG 20-HP50N-S	1	PARKER
1	24 HOSE ASSY 2 OFF 7308-2924 / 1/2" CAT HOSE 1'-8" LG	2	GATES
	FERRULES 7266-0036 2 OFF		
2	23 STRAIGHT THD CONNECTOR 1/2" 14F50X-S	2	PARKER
1	22 HOSE ASSY: 7303-6924 / 1/2" CAT HOSE 5'-5" LG	1	GATES
	7303-6924 / FERRULES 7266-0017 2 OFF		
1	21 HOSE ASSY 7303-6924 / 1/2" CAT HOSE 5'-5" LG	1	GATES
	7303-6924 / FERRULES 7266-0017 2 OFF		
1	20 HOSE ASSY 7303-5924 / 3/4" CA HOSE 3'-9" LG	1	GATES
	7303-5924 / 2 OFF NO 5 BAND-IT CLAMPS		
1	19 HOSE ASSY 7303-5924 / 3/4" CA HOSE 4'-9" LG	1	GATES
	7303-5924 / 2 OFF NO 5 BAND-IT CLAMPS		
1	18 HOSE ASSY 7308-2924 / 1/2" CAT HOSE 8'-3" LG	1	GATES
	7308-2924 / FERRULES 7266-0036 2 OFF		
1	17 HOSE ASSY 7308-2924 2 OFF / 1/2" CAT HOSE 4'-4" LG	2	GATES
	FERRULES 7266-0036 2 OFF		
1	16 HOSE ASSY: 7308-2924 / 1/2" CAT HOSE 5'-7" LG	1	GATES
	7308-2924 / FERRULES 7266-0036 2 OFF		
15	NOT REQ		
2	14 JIC 37 MALE ELBOW 7253-445	2	GATES
1	13 3/4" DIA TUBE X .035 WALL X 2'-0" LG	1	SAE CUT TO SUIT
3	12 JIC 37 ADAPTOR 7253-421	3	GATES
1	11 FEMALE PIPE TEE 1/2" MMD-S	1	PARKER
4	10 PIPE NIPPLE 1/4" F-S	4	PARKER
4	9 SHUTTLE VALVE DSU1-8-B-2	4	MODULAR COLUMN
4	8 MALE ELBOW GCBU-S	4	PARKER
7	NOT REQ		
2	6 JIC 37 ADAPTOR 7253-472	2	GATES
2	5 CAP 1/2" FNTX-S	2	PARKER
2	4 STRAIGHT THD RUN TEE 1/2" 14F50X-S	2	PARKER
2	3 1/2" DIA X 5/16" CAPSCW 1/2" NUT & LW	2	OR 5
1	2 MOUNTING PLATE	1	38W
1	1 LOCK VALVE 1EEC31-F-16T-30-S-88	1	225:1 PILOT RATIO

## NOTE

- 1) ALL TUBING TO BE SAE 1010 STL FULLY  
ANNEALED, PHOSPHATE PICKLED, NEUTRALIZED  
& BLOWN DRY



SLEW DRIVE ASSY 45403-0-A1

ALL DIMENSIONS IN INCHES  
ALLOWABLE VARIATION ON CONTROLLING FINISHED SURFACES IS .010 UNLESS OTHERWISE SPECIFIED

DATE	REVISIONS	BY	CH	DATE	REVISIONS	BY	CH	DATE	REVISIONS	BY	CH

DO NOT SCALE - IF IN DOUBT ASK

DRAWN BY: AF		CHECKED BY: EA		DATE: 1/17/76	
GRAPHTO APP: EA		DATE: 1/17/76		DATE: 1/17/76	
ENG. APP:		SCALE: 3" = 1' 0"		CONTRACT NO.	
REP. DWG.		CUSTOMER:		TITLE: SLEW MOTOR PIPING ARRANGEMENT	
SHEET NO. 1 OF 1		DWG. NO. 46063-0-A1		REV. 1	
EST. NO. 92		L.B. NO. 46063-0-A1		REV. 1	