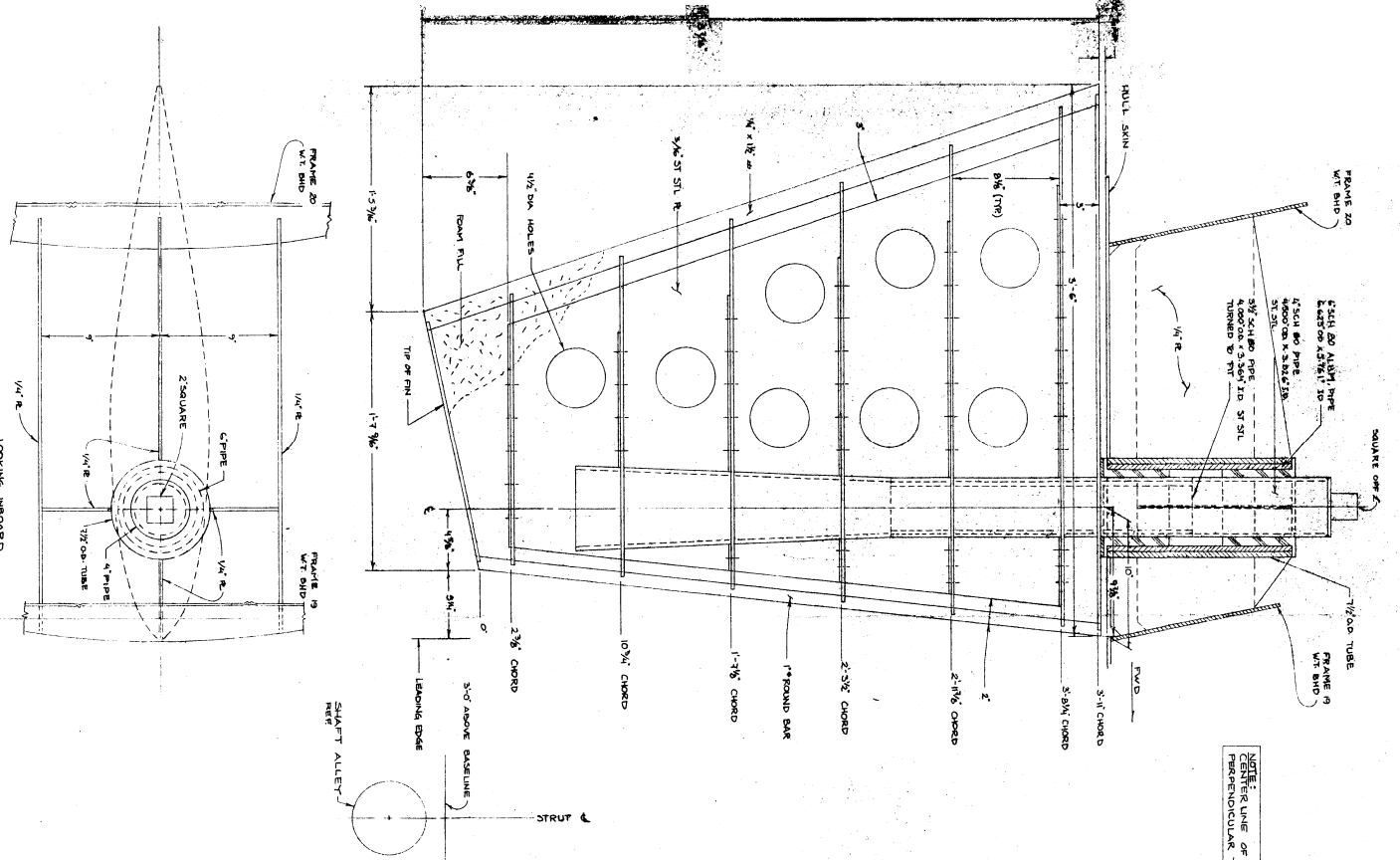
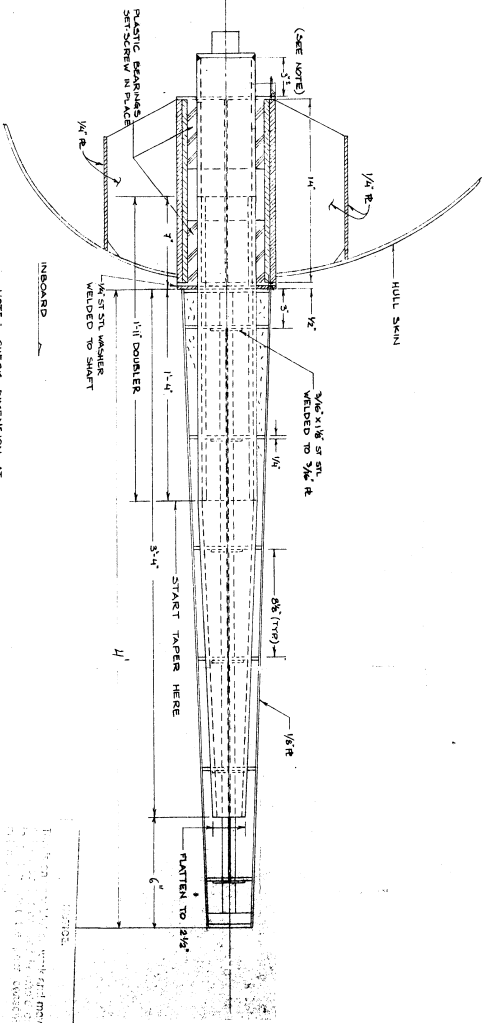
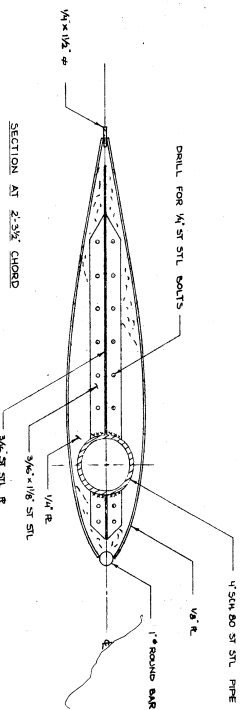


Offset	0' Chord	2 1/2' Chord	10 1/4' Chord	17 1/2' Chord	25 3/4' Chord	32 1/2' Chord	37 1/2' Chord	41 1/2' Chord	45 1/2' Chord
1/4" R	1.000	0.970	0.940	0.910	0.880	0.850	0.820	0.790	0.760
5/8" R	1.000	0.970	0.940	0.910	0.880	0.850	0.820	0.790	0.760
1" R	1.000	0.970	0.940	0.910	0.880	0.850	0.820	0.790	0.760
1 1/4" R	1.000	0.970	0.940	0.910	0.880	0.850	0.820	0.790	0.760
1 1/2" R	1.000	0.970	0.940	0.910	0.880	0.850	0.820	0.790	0.760
1 3/4" R	1.000	0.970	0.940	0.910	0.880	0.850	0.820	0.790	0.760
2" R	1.000	0.970	0.940	0.910	0.880	0.850	0.820	0.790	0.760
2 1/2" R	1.000	0.970	0.940	0.910	0.880	0.850	0.820	0.790	0.760
3" R	1.000	0.970	0.940	0.910	0.880	0.850	0.820	0.790	0.760
3 1/2" R	1.000	0.970	0.940	0.910	0.880	0.850	0.820	0.790	0.760
4" R	1.000	0.970	0.940	0.910	0.880	0.850	0.820	0.790	0.760
4 1/2" R	1.000	0.970	0.940	0.910	0.880	0.850	0.820	0.790	0.760
5" R	1.000	0.970	0.940	0.910	0.880	0.850	0.820	0.790	0.760
5 1/2" R	1.000	0.970	0.940	0.910	0.880	0.850	0.820	0.790	0.760
6" R	1.000	0.970	0.940	0.910	0.880	0.850	0.820	0.790	0.760
6 1/2" R	1.000	0.970	0.940	0.910	0.880	0.850	0.820	0.790	0.760
7" R	1.000	0.970	0.940	0.910	0.880	0.850	0.820	0.790	0.760
7 1/2" R	1.000	0.970	0.940	0.910	0.880	0.850	0.820	0.790	0.760
8" R	1.000	0.970	0.940	0.910	0.880	0.850	0.820	0.790	0.760
8 1/2" R	1.000	0.970	0.940	0.910	0.880	0.850	0.820	0.790	0.760
9" R	1.000	0.970	0.940	0.910	0.880	0.850	0.820	0.790	0.760
9 1/2" R	1.000	0.970	0.940	0.910	0.880	0.850	0.820	0.790	0.760
10" R	1.000	0.970	0.940	0.910	0.880	0.850	0.820	0.790	0.760

OFFSETS ARE IN INCHES



NOTE: CENTERLINE OF SHAFT IS PERPENDICULAR TO HULL SKIN



NOTE: CHECK DIMENSION AT END OF SHAFT

-STABILIZER FIN DETAIL-

DESIGNED BY: LONZIG MARINE ENTERPRISES, INC.  
 15 NOV 88 88-05-01  
 SCALE: 3/4\"/>