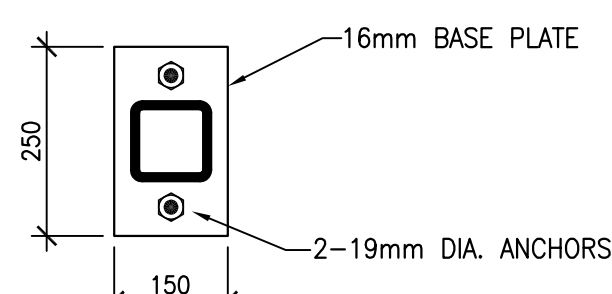


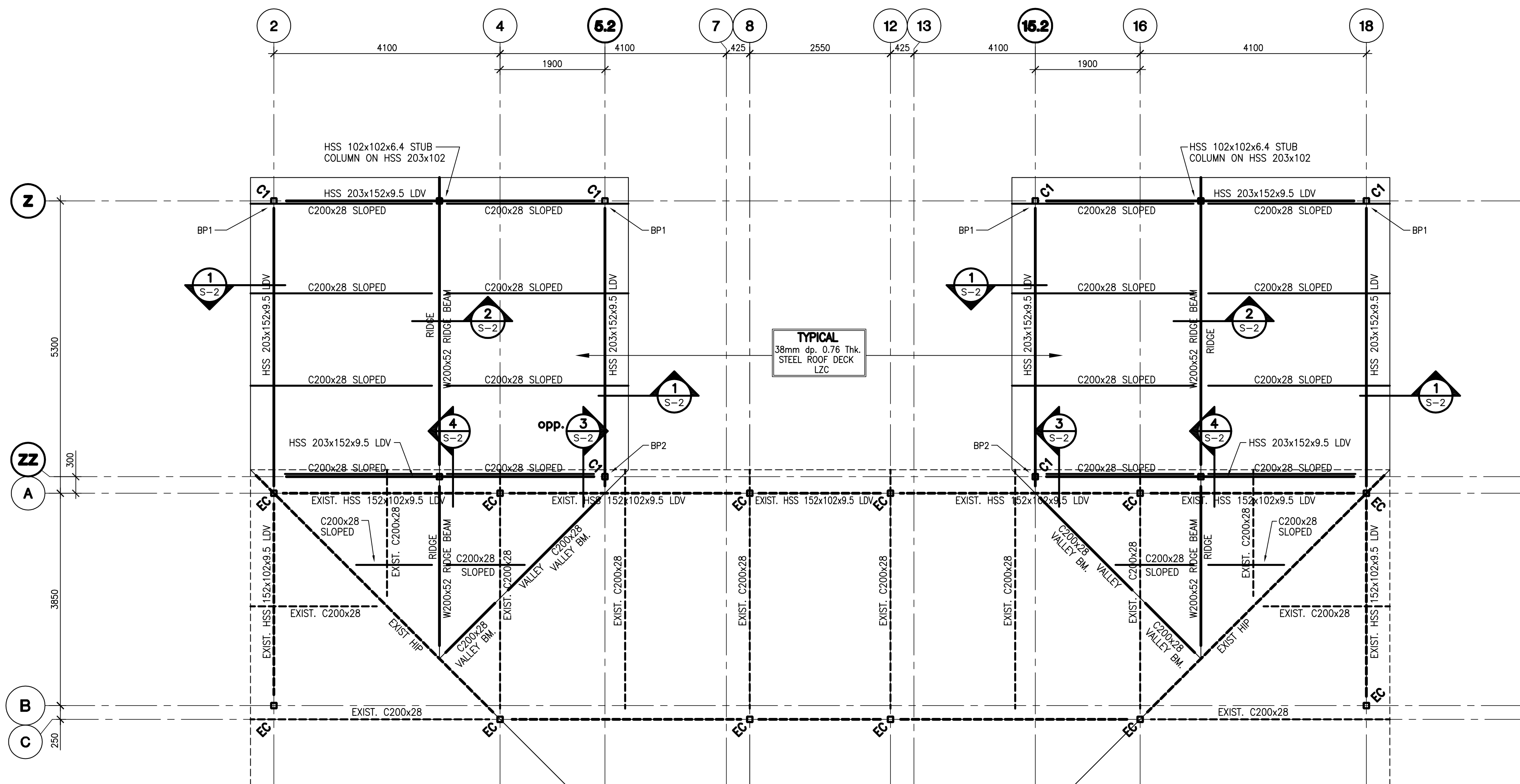
**BP1 BASE PLATE**

SCALE: 1:10



**BP2 BASE PLATE**

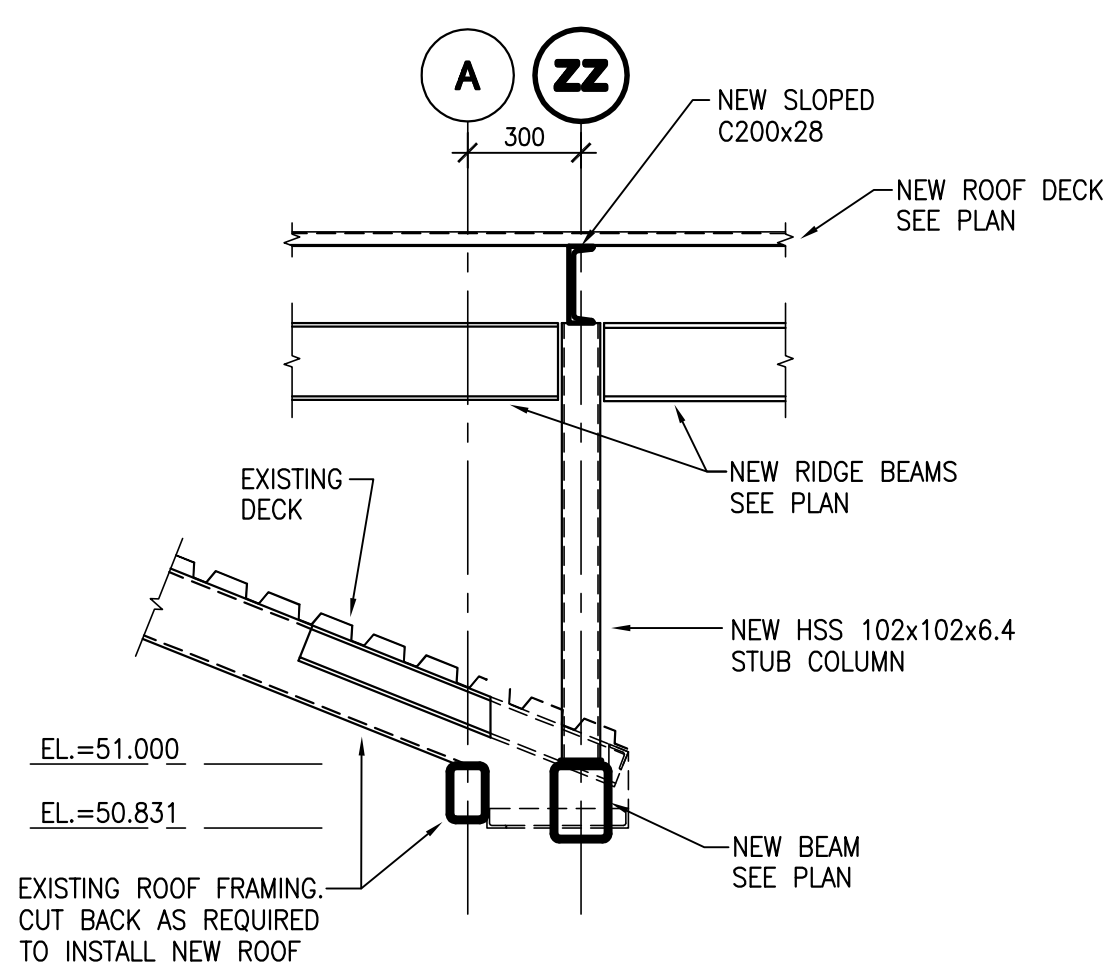
SCALE: 1:10



**C1:** HSS 102x102x6.4 COLUMN  
**EC:** EXISTING HSS COLUMN

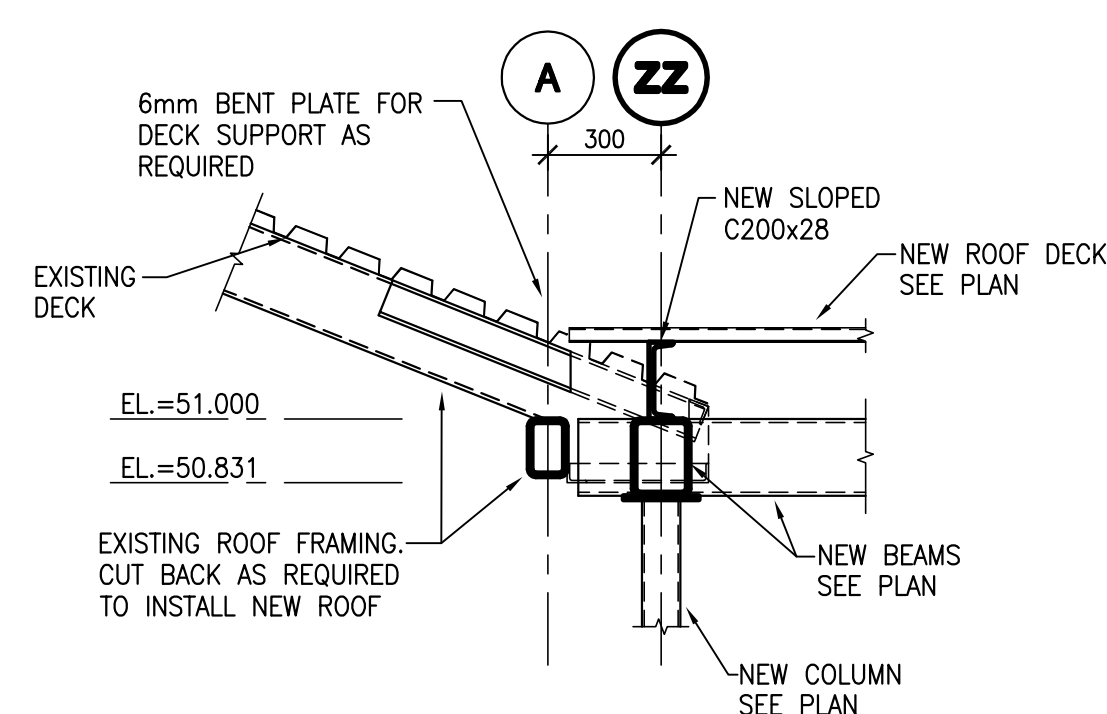
**ROOF FRAMING PLAN**

SCALE: 1:50



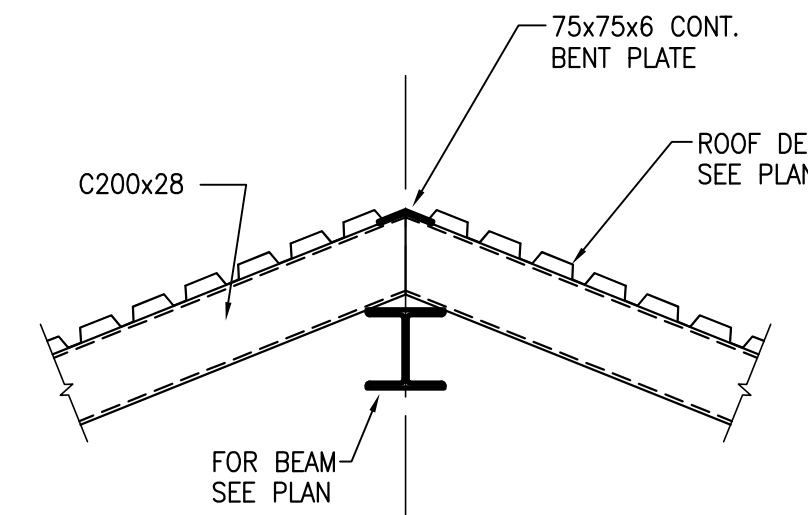
**SECTION 4**

SCALE: 1:20



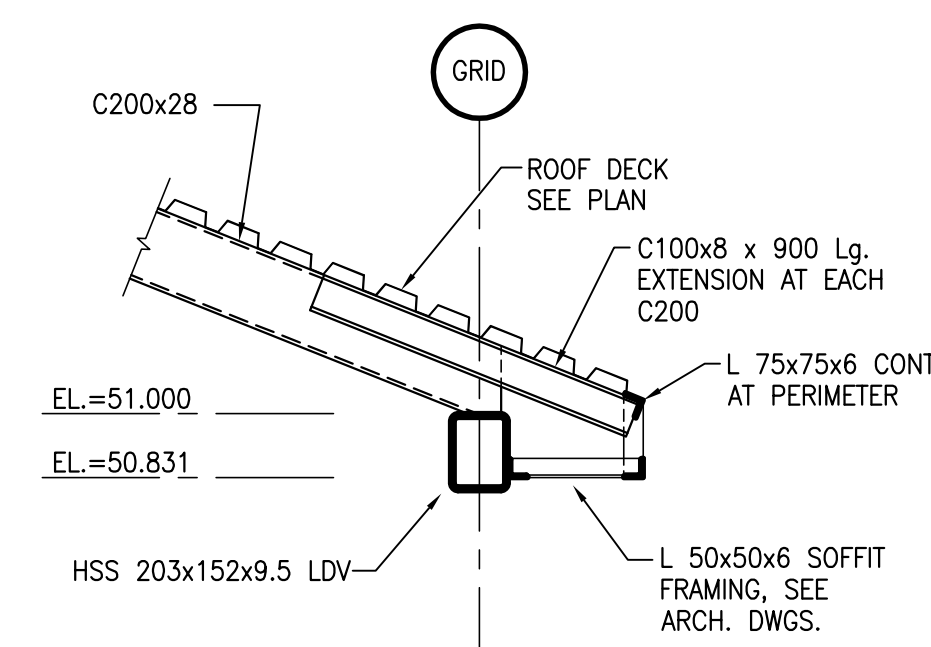
**SECTION 3**

SCALE: 1:20



**SECTION 2**

SCALE: 1:20



**SECTION 1**

SCALE: 1:20

revisions	date
1	TENDER ADDENDUM
	MAY 2012

4 BED  
SLE EXPANSION  
NOVA INSTITUTION FOR WOMEN  
TRURO, NS

ROOF FRAMING PLAN  
AND SECTIONS

designed E. LIDSTONE  
drawn P. RICHARDSON  
approved E. LIDSTONE  
project number R.043928.004  
drawing no. S-2