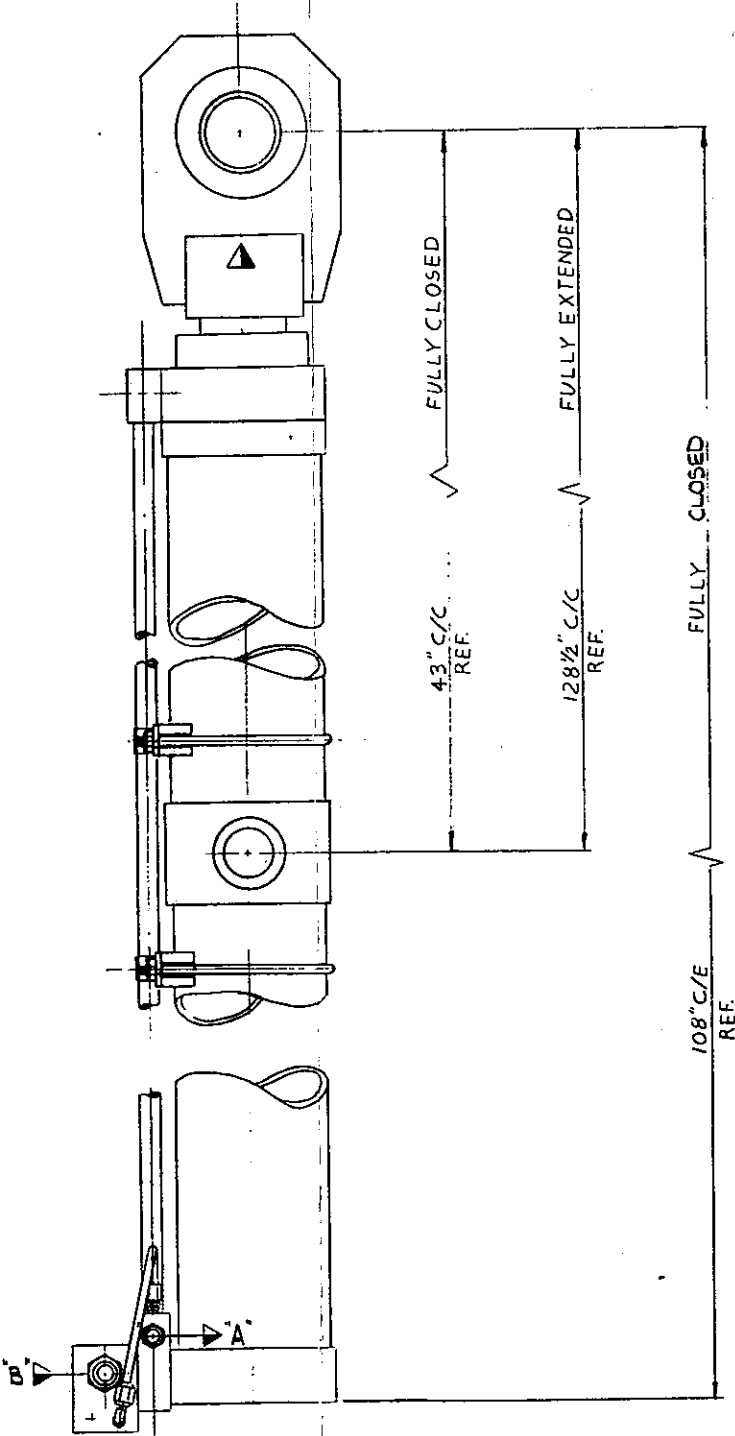
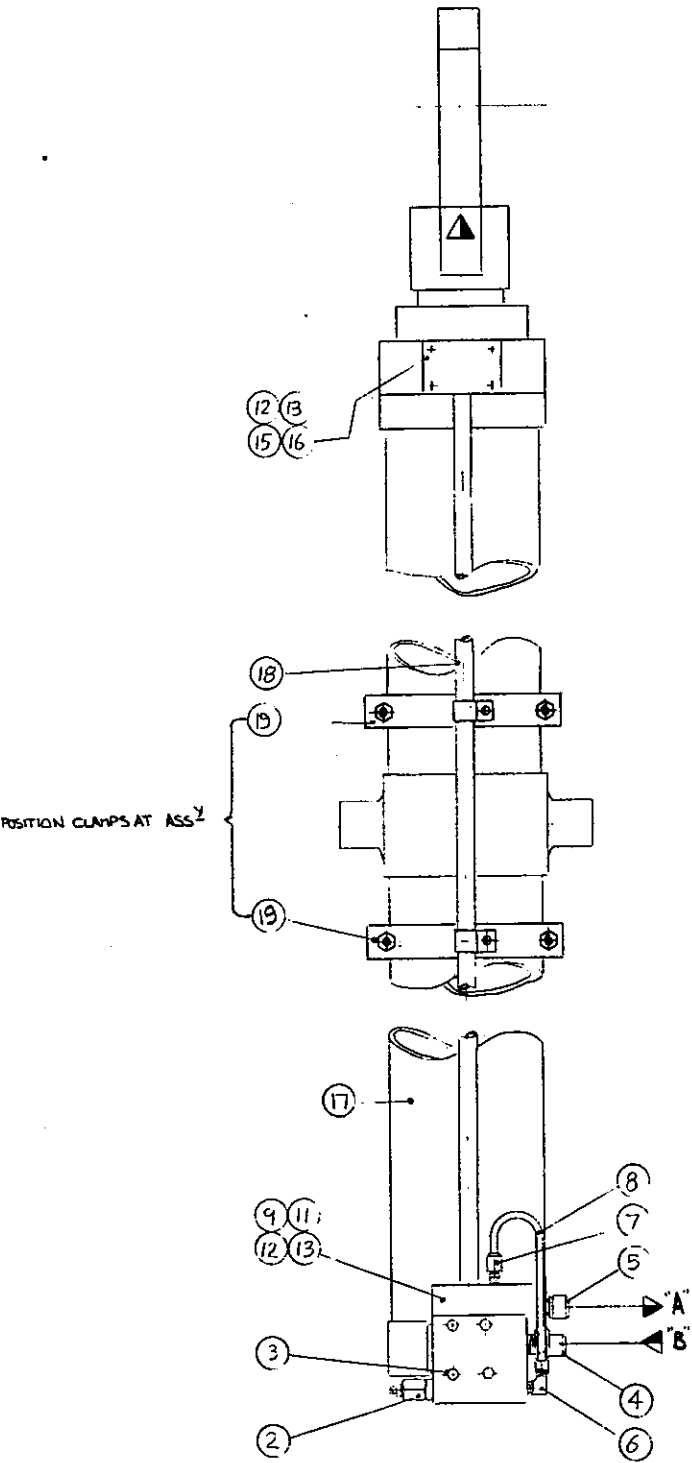


This drawing, in design and detail is the property of
JOHN T. HEPBURN, LIMITED
and must not be used or copied except in connection
with our work, and only after instructions are
given from this company. All rights of design or
invention are reserved.

DWG. NO. 46057-0-Ai



ASSEMBLY (C)

[illegible]

DO NOT SCALE—IF IN DOUBT ASK