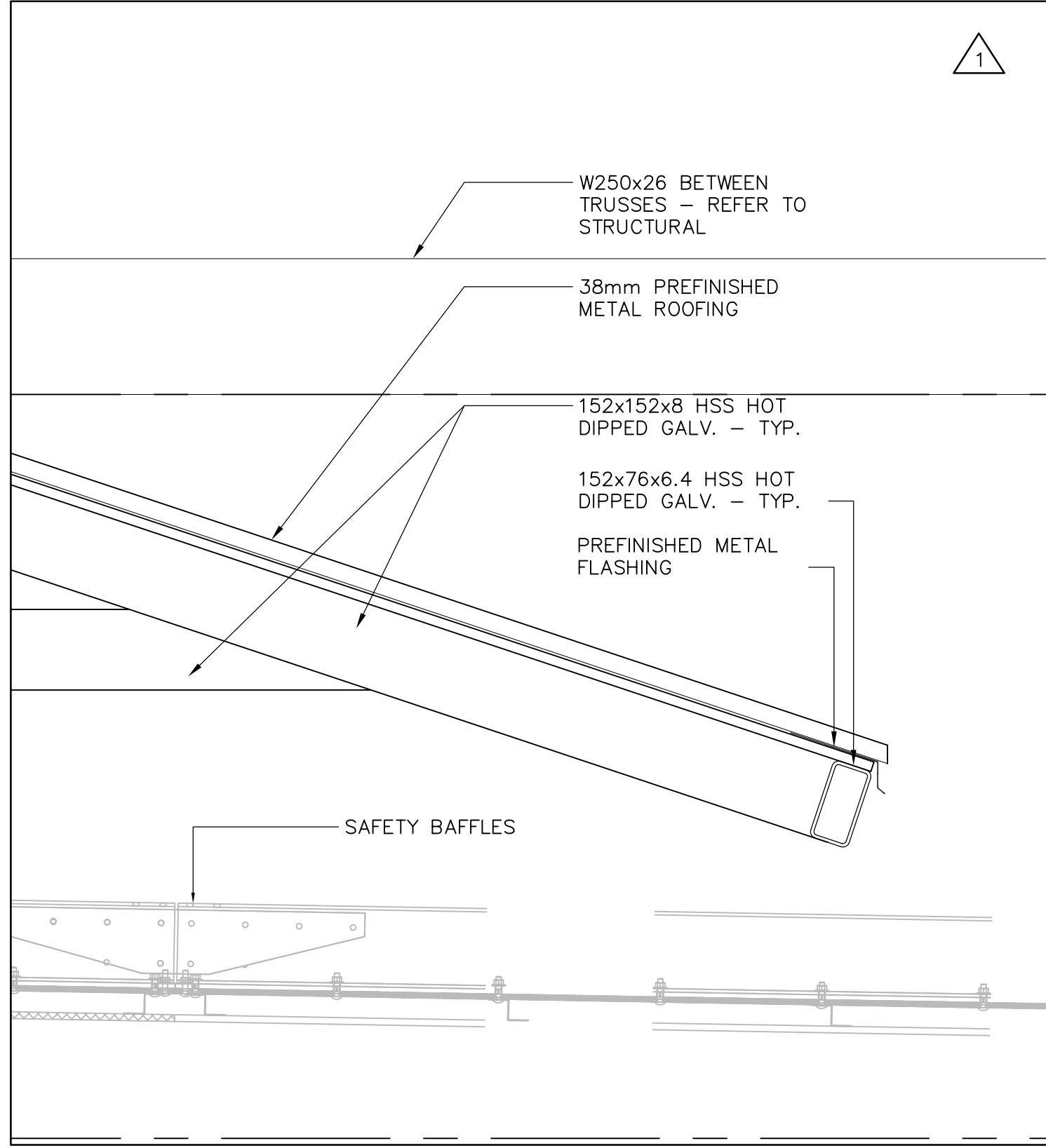
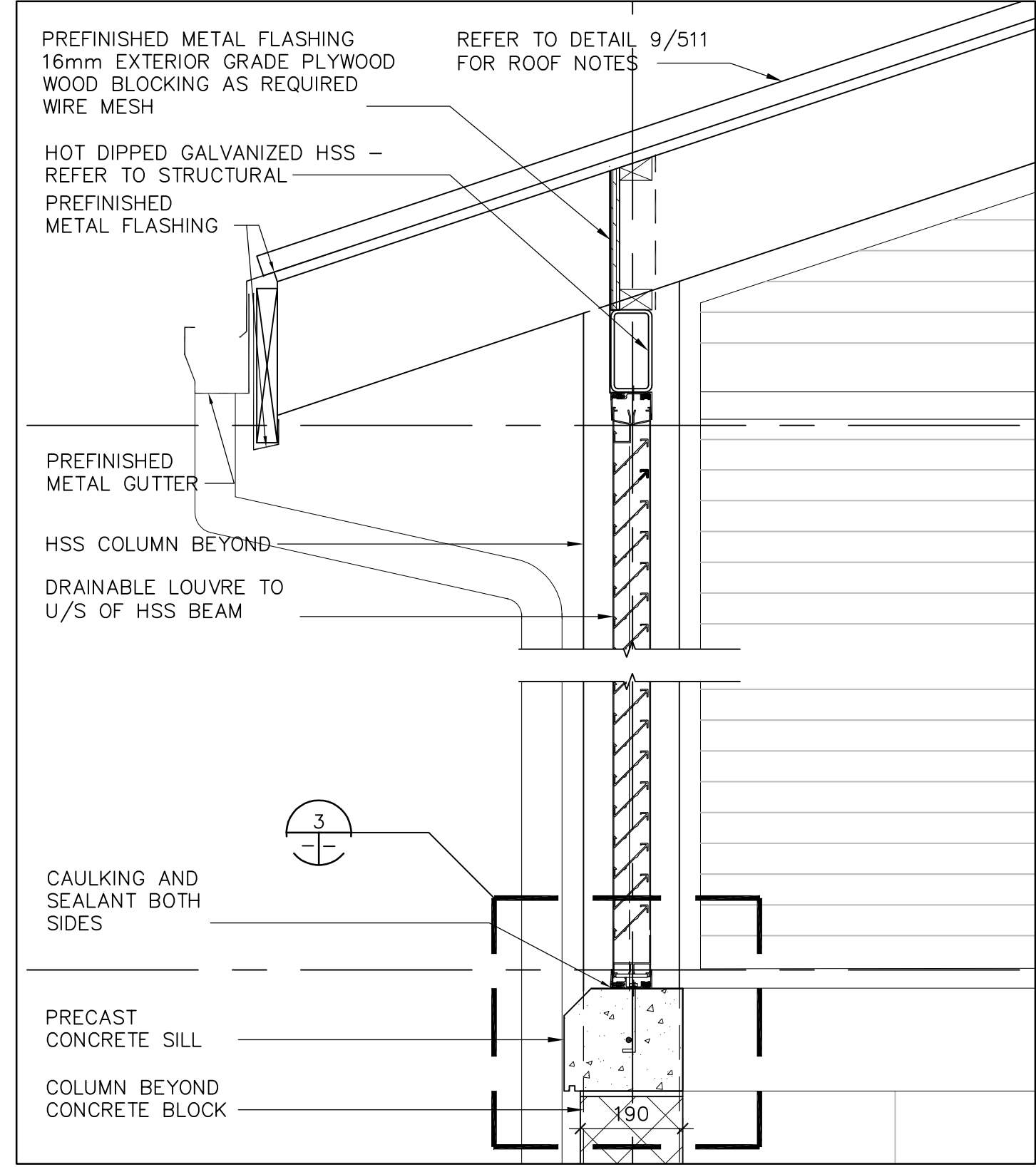


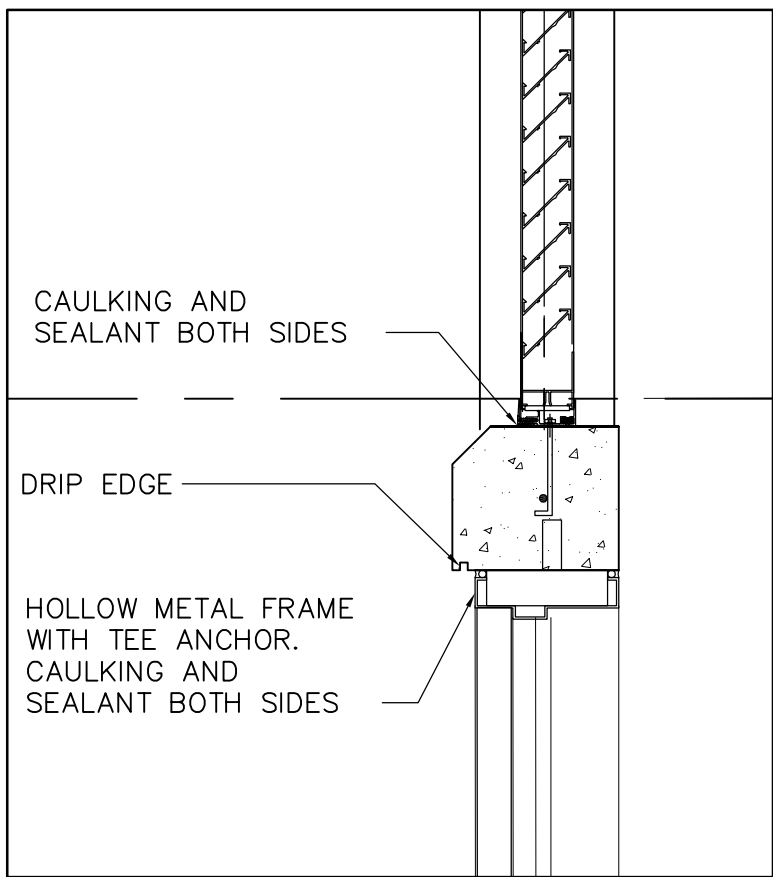
9 SECTION DETAIL
510 1:10



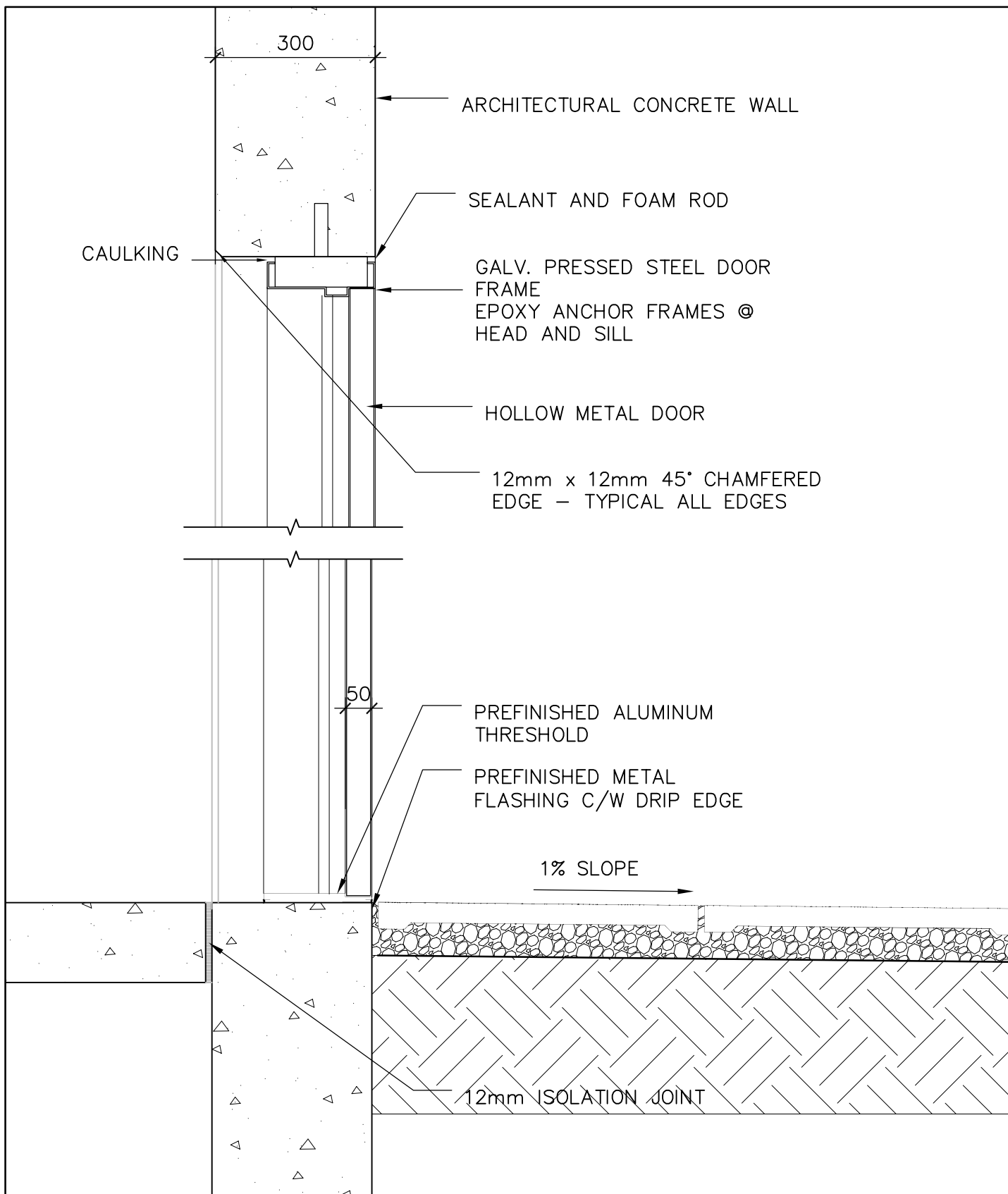
8 SECTION DETAIL
510 1:10



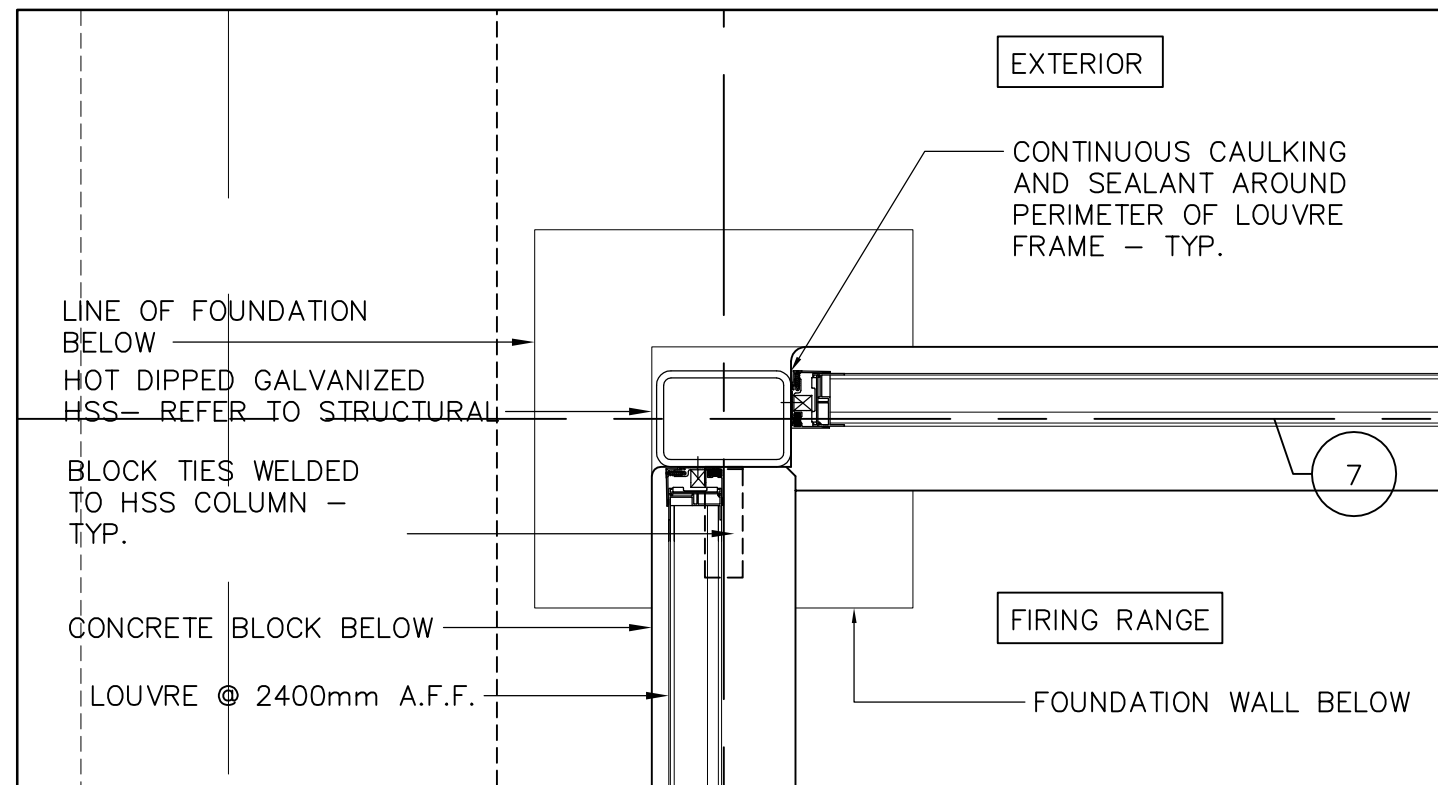
7 SECTION DETAIL @ LOUVRE
510 1:10



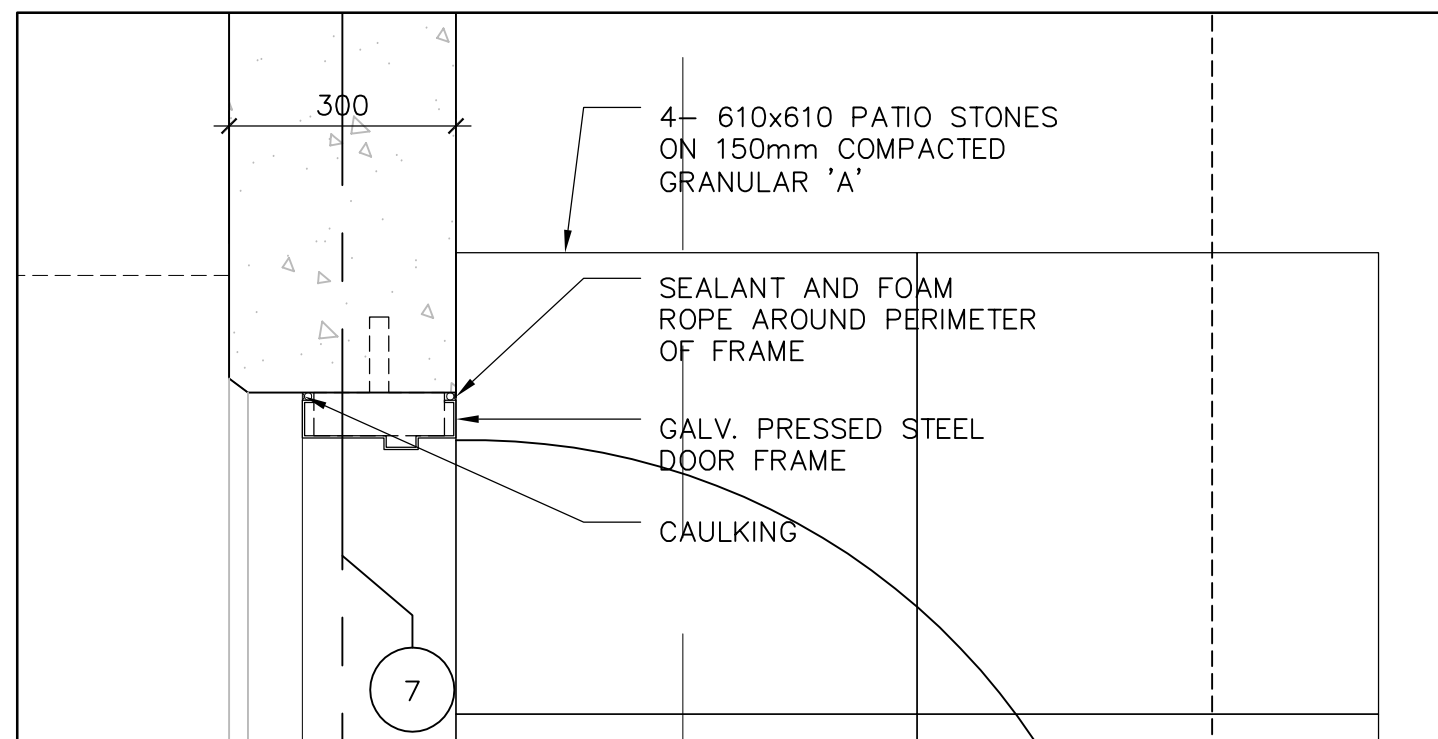
12 DOOR HEADER @ CONC. BLOCK
1:10 DOORS 101 & 102



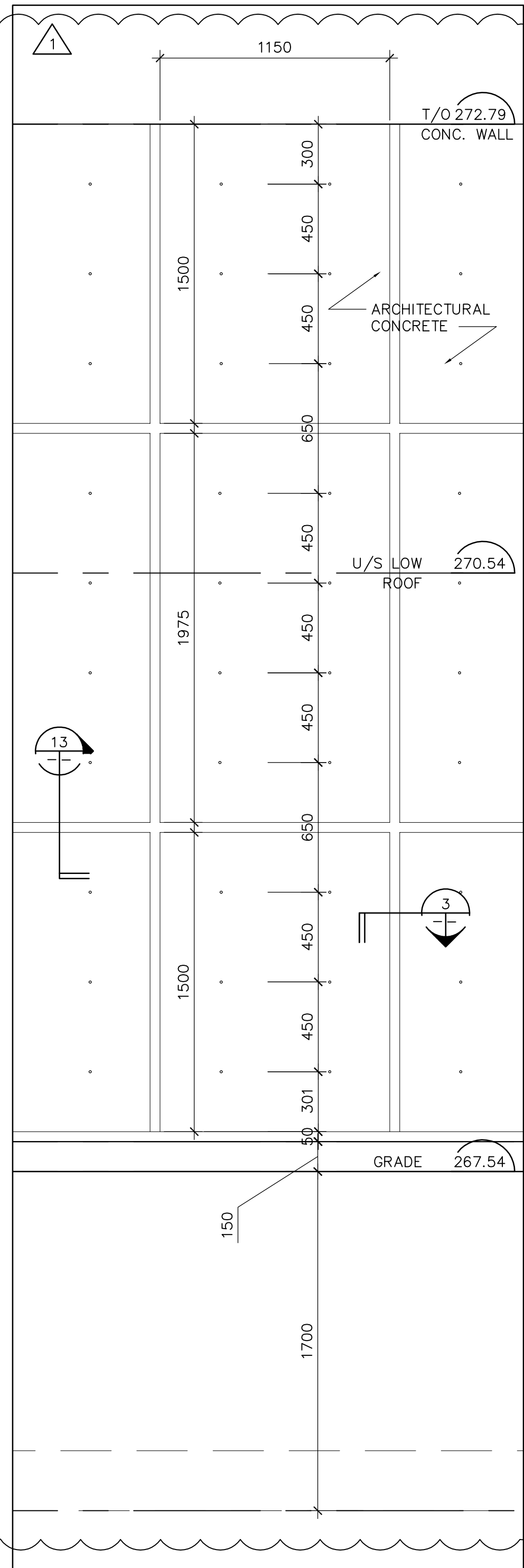
5 TYPICAL DOOR SILL & HEAD
210 1:10



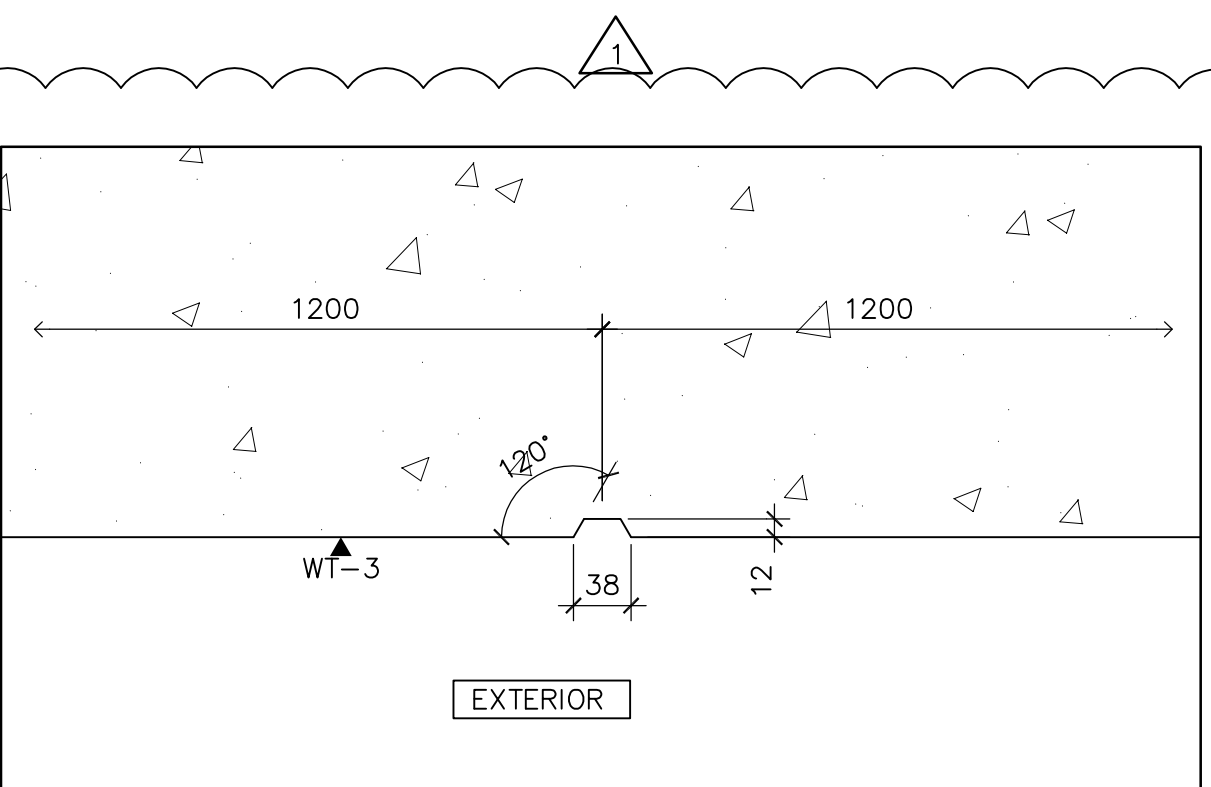
6 TYPICAL DOOR JAMB DETAIL
1:10



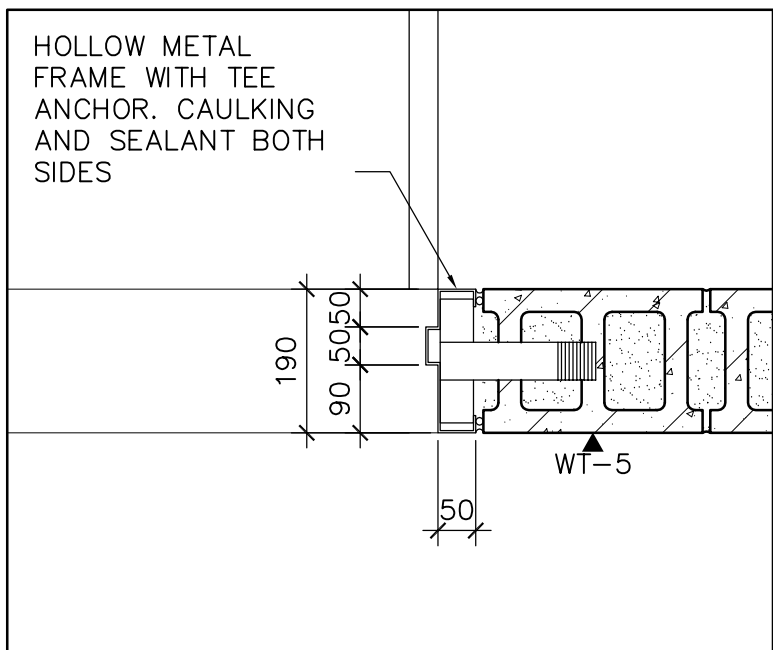
4 TYPICAL DOOR JAMB DETAIL
1:10



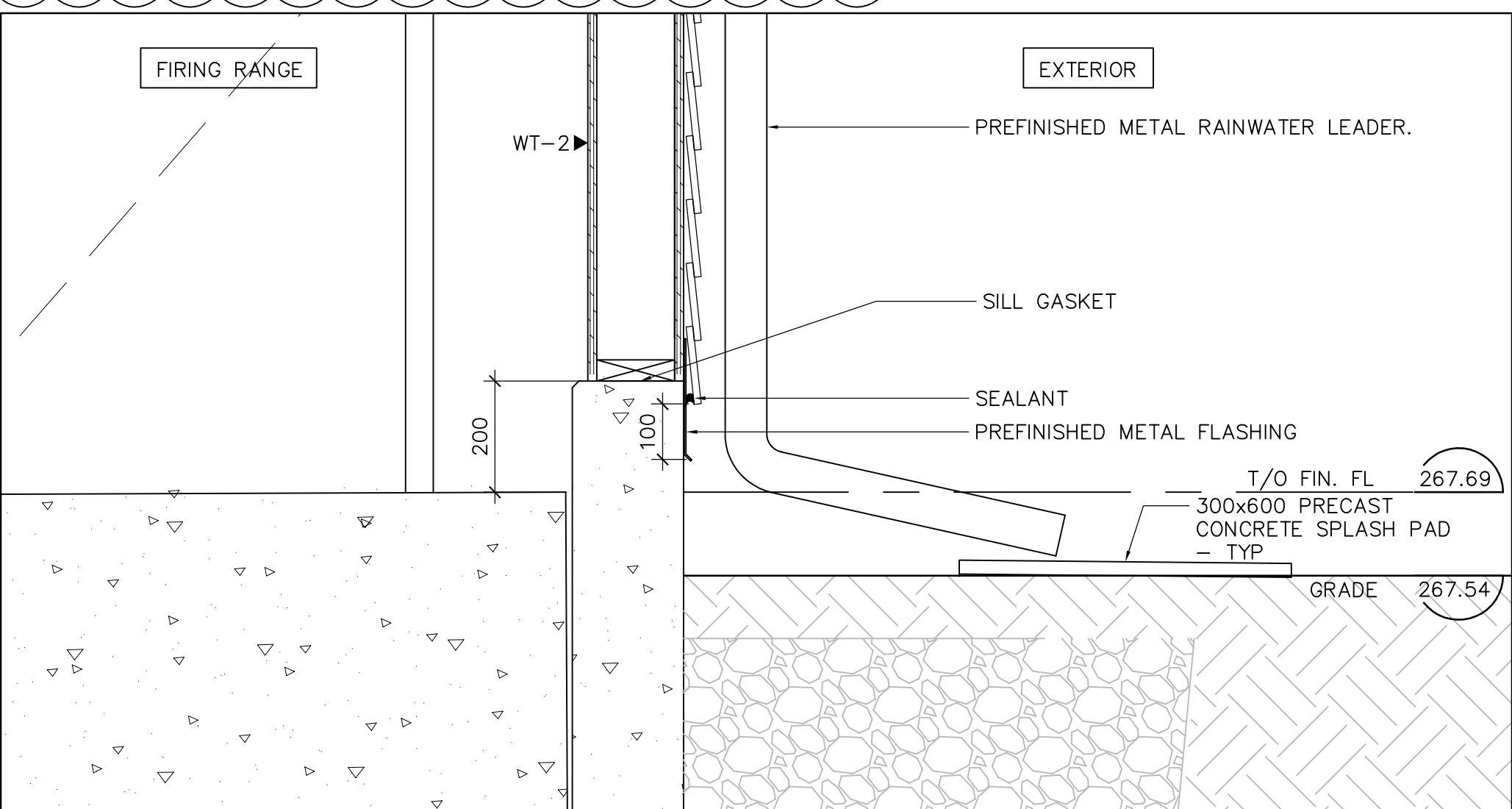
1 ELEVATION PATTERN
310 1:20 0 0.1m 0.5m 1m 2m



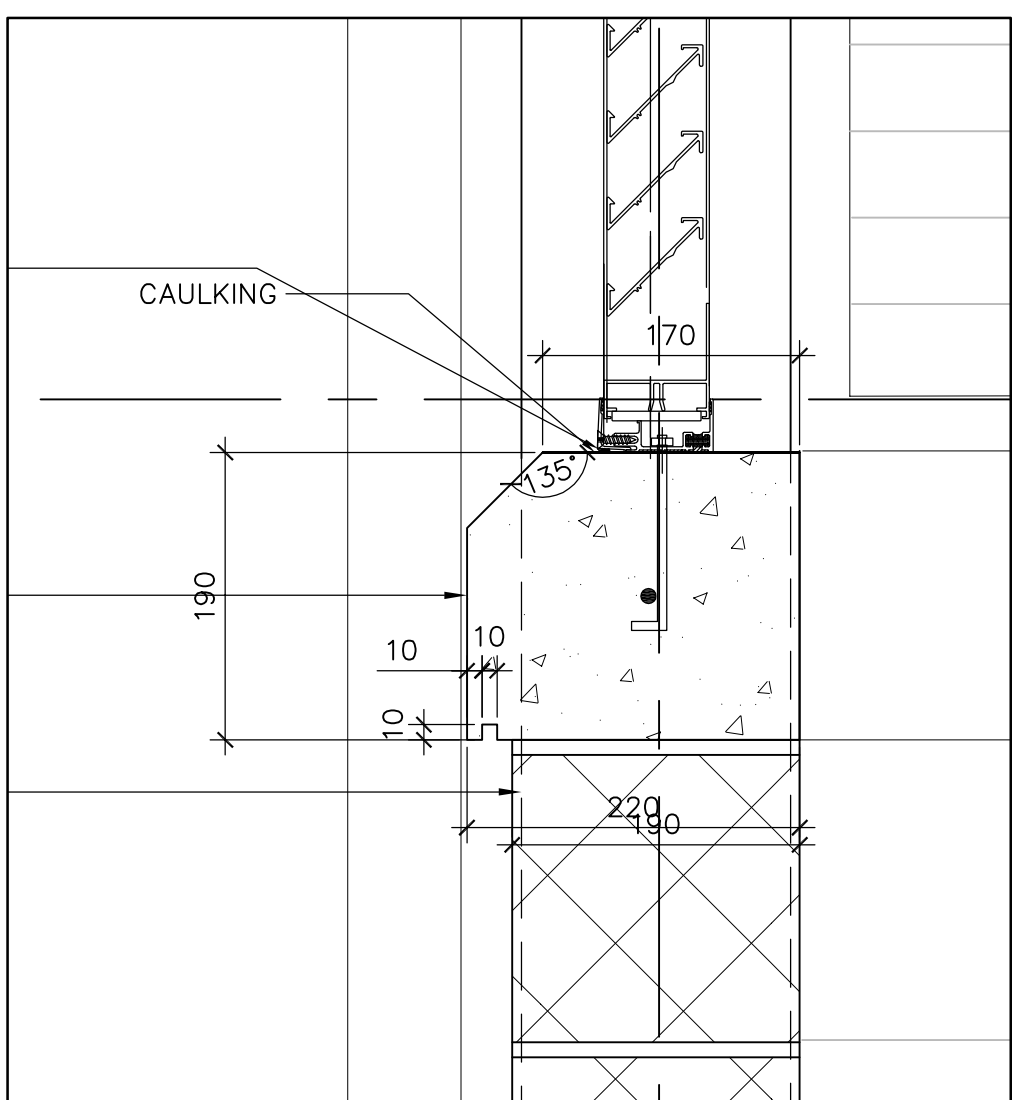
13 REVEAL ON EXTERIOR FACE OF CONC. WALL
1:5



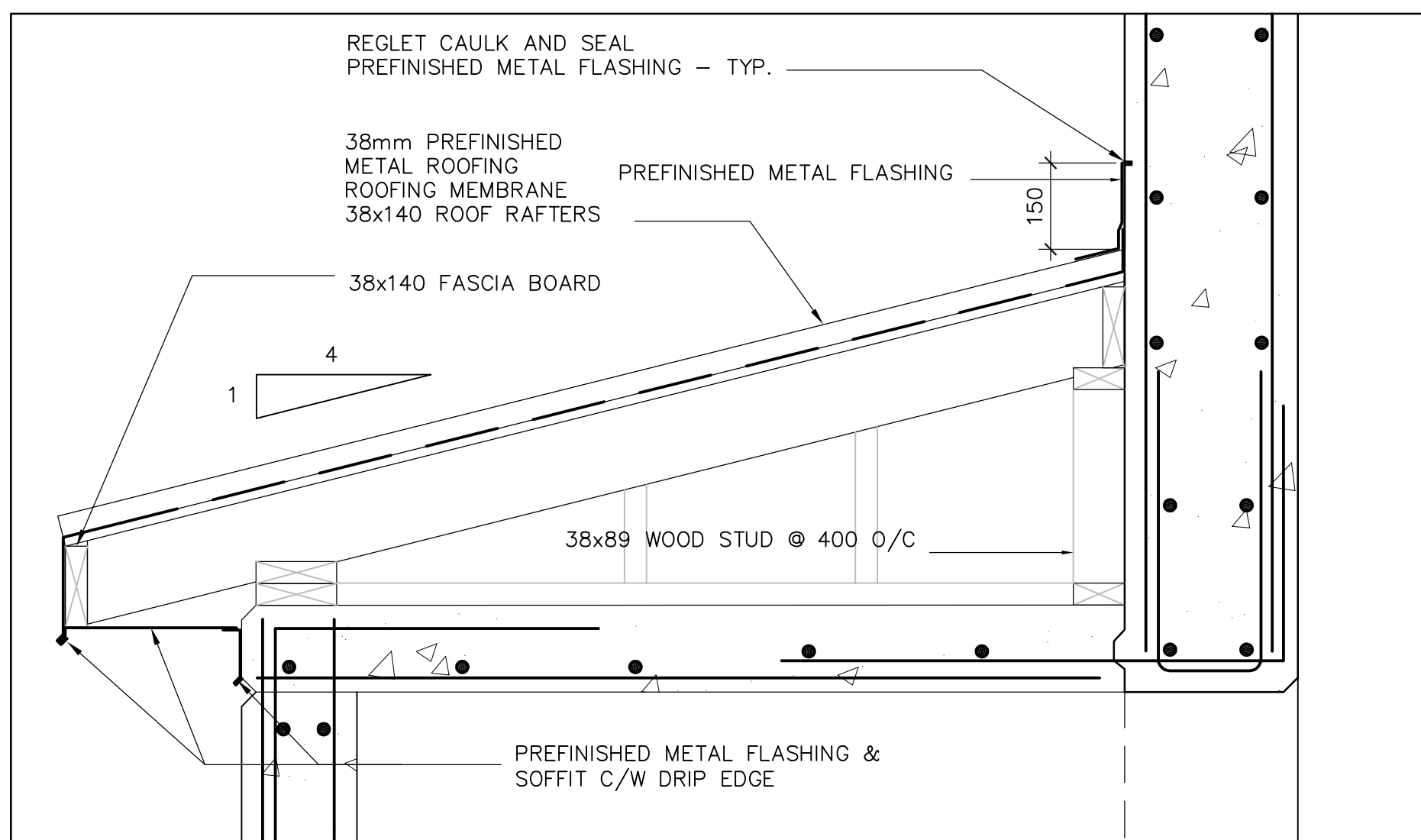
11 DOOR JAMB @ CONC. BLOCK
1:10 DOORS 101 & 102



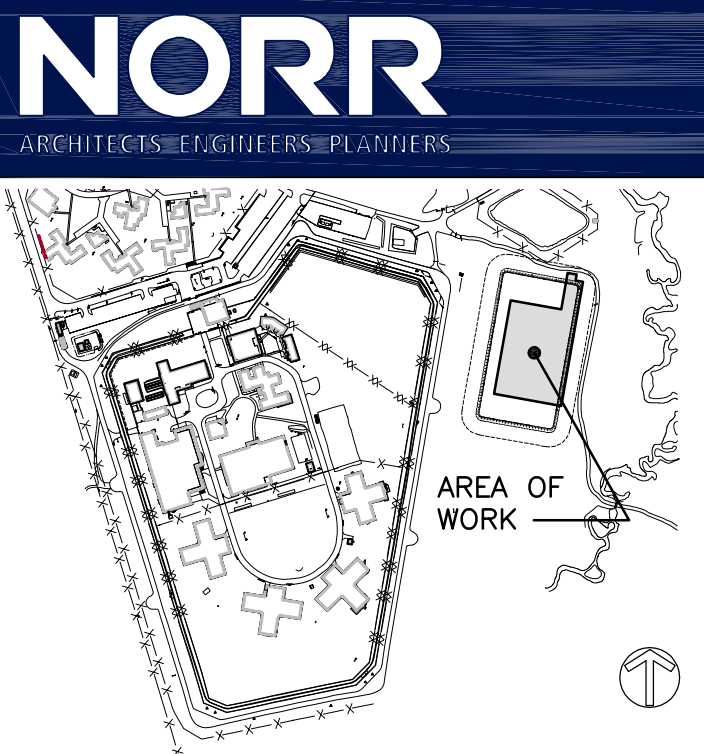
10 WALL SECTION DETAIL
310 511 1:10



3 PRECAST CONCRETE SILL
1:5 0 0.1m 0.5m



2 TYPICAL SLOPED ROOF DETAIL
210 1:100 0 0.1m 0.5m 1m



04		
03	ISSUED FOR ADDENDUM # 1	13-01-04
02	ISSUED FOR BID	12-11-27
01	ISSUED FOR 90% REVIEW	12-11-16
revision		date

Do not scale drawings.
Verify all dimensions and conditions on site and immediately
notify the Departmental Representative of all discrepancies.

A	Detail No.
B	No. du détail
B	drawing no. - where detail required
C	dessin no. - où détail exigé
C	drawing no. - where detailed
	dessin no. - où détaillé

project title
titre du projet
Gravenhurst Ontario
Correctional Service of Canada
Fenbrook Institution
2000 Beaver Creek Drive,
FENBROOK INSTITUTION
FIRING RANGE & TRAINING BUILDING

drawing title
titre du dessin
FIRING RANGE
DETAILS

drawn by
dessiné par
M. ROBERTS

designed by
conc par
D. LOWE

approved by
approuvé par
D. ARISS

bid
offre
M. PISTARELLI

project date
date du projet
2013-01-04

project no.
no. du projet
R.052544.001

drawing no.
dessiné no.
A-511