

2611 QUEENSVIEW DRIVE
SUITE 300
OTTAWA (ONTARIO)
CANADA K2B 8K2
TELEPHONE: 613-829-2800 FAX: 613-829-8299
WWW.GENIVAR.COM

PROJECT:

HMCS CARLETON

PROJECT NO:

09-403 CARLETON

SUPPLEMENTAL:

ADDENDUM: ADD_#
DIRECTIVE: DIR_#
CHANGE ORDER: CHG_#

TITLE:

ADDENDUM M-01
PART GROUND FLOOR PLAN - MECHANICAL

SCALE:

1:100

REVISION:

REV 0

DRAWN BY:

N. HENRI

DATE:

2013.05.16

CHECKED BY:

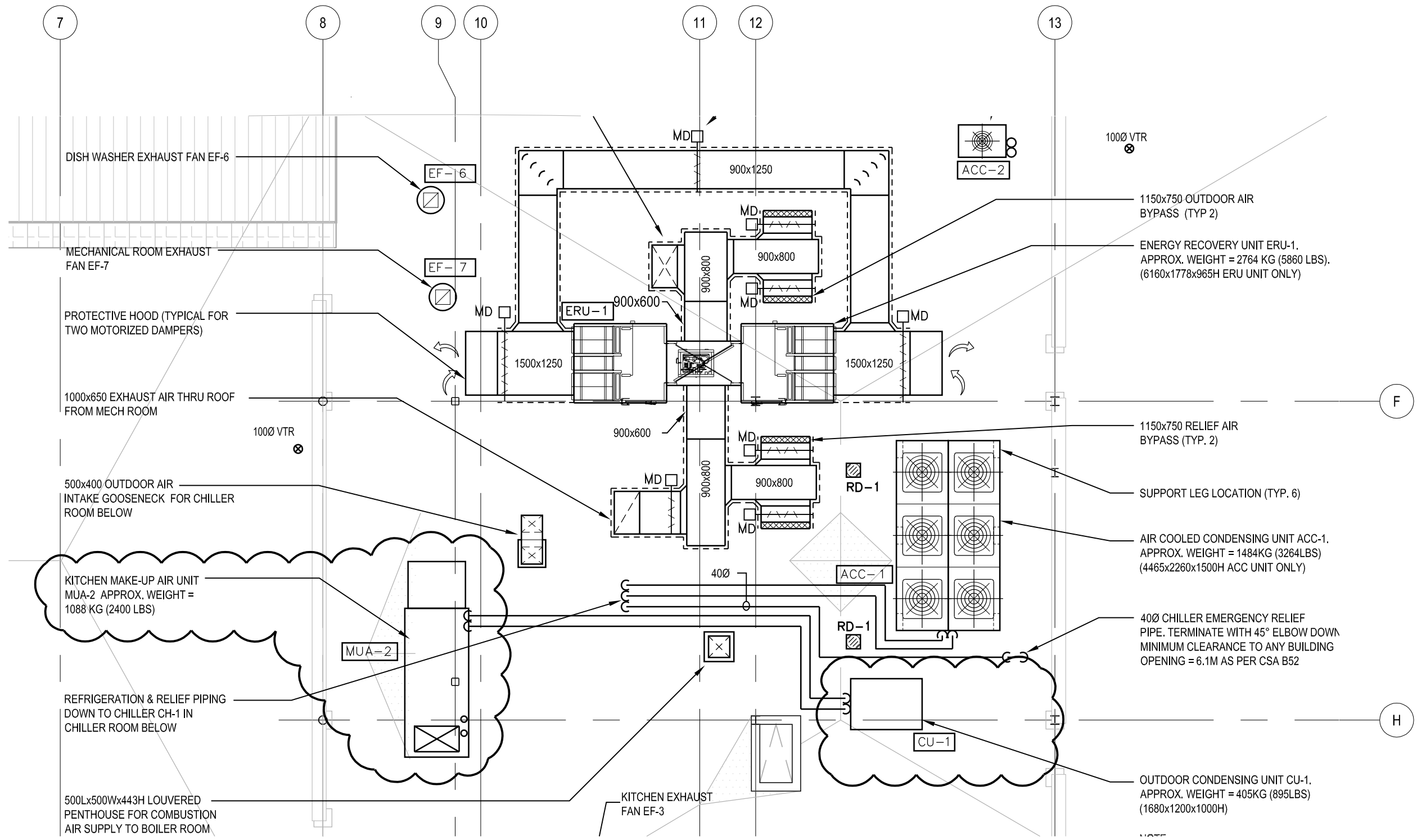
L.L. M.C.

SUPPLEMENTAL NO:

MSK-440.1

XREF

STAMP



2611 QUEENSVIEW DRIVE
SUITE 300
OTTAWA (ONTARIO)
CANADA K2B 8K2
TELEPHONE: 613-829-2800 FAX: 613-829-8299
WWW.GENIVAR.COM

PROJECT:

HMCS CARLETON

PROJECT NO:

09-403 CARLETON

SUPPLEMENTAL:

ADD_#
DIR_#
CHG_#

TITLE:

ADDENDUM M-01
PART ROOF PLAN - MECHANICAL

SCALE:

1:100

REVISION:

REV 0

DRAWN BY:

N. HENRI

DATE:

2013.05.16

CHECKED BY:

L.L. M.C.

SUPPLEMENTAL NO:

MSK-450.1

FAN SCHEDULE

TAG	DESCRIPTION	SERVICE	LOCATION	CAPACITY			ACCESSORIES	MOTOR		VFD	VOLTAGE	CONTROL TYPE	REMARKS
				FLOW L/S	E.S.P. Pa	FAN RPM		HP	KW				
EF-1	BELT DRIVE	BUILDING	MECH. ROOM	835	373	1573	NOTE: 1., 3., 5, 6, 9, 10	0.75	1	YES	600/3/60	BAS	
	DUCT BLOWER	RELIEF		1770	1.50								
EF-2	BELT DRIVE	WASHROOM	MECH. ROOM	1525	187	689	NOTE: 1., 3., 4., 5, 6, 8, 10	0.75	1	NO	600/3/60	BAS	
	DUCT BLOWER	EXHAUST		3230	0.75								
EF-3	ROOF EXHAUST	KICHEN EXHAUST	ROOF	1441	249	1114	NOTE: 2., 3., 8, 9,	0.75	1	YES	600/3/60	HOOD CONTROLLER	TO NFPA 96
				3054	1.00								
EF-4	CEILING CABINET	POL 184	POL 184	35	62	1050	NOTE: 1., 3., 4., 6, 7, 8, 10	0.03	NO	120/1/60	BAS		
				75	0.25								
EF-5	INLINE DIRECT	COPY/FAX 289	CEILING SPACE	47	62	916	NOTE: 1., 3, 4, 6, 7, 8, 10	0.08	NO	120/1/60	BAS		
				100	0.25								
EF-6	ROOF UPBLAST	DISHWASHER EXHAUST	ROOF	236	249	1259	NOTE: 1., 2, 3, 4, 8	0.19	NO	120/1/60	MANUAL	EPOXY POWDER FINISH	
				500	1.00								
EF-7	ROOF UPBLAST	MECH ROOM EXHAUST	ROOF	236	124	1438	NOTE: 1., 2, 3, 4, 8	0.12	NO	120/1/60	T*STAT		
				500	0.50								
EF-8	INLINE BELT	SPACE VENTILATION	CHILLER ROOM	1251	62	542	NOTE: 1., 3, 6, 8, 10	0.19	NO	120/1/60	BAS		
				2650	0.25								
EF-9	CEILING CABINET	SPACE VENTILATION	CHILLER ROOM	49	31	1050	NOTE: 1., 3, 4, 6, 7, 8, 10	0.04	NO	120/1/60	BAS		
				104	0.13								
TF-1	INLINE BLOWER	SPACE VENTILATION	ELEC 256	124	62	1075	NOTE: 1., 3, 4, 6, 7, 8, 10	0.16	NO	120/1/60	T*STAT		
				263	0.25								



GENIVAR

2611 QUEENSWAY DRIVE
SUITE 300
OTTAWA (ONTARIO)
CANADA K2B 8K2
TELEPHONE: 613-829-2800 FAX: 613-829-8299
WWW.GENIVAR.COM

PROJECT:

HMCS CARLETON

PROJECT NO:

09-403 CARLETON

SUPPLEMENTAL:

ADDENDUM:
DIRECTIVE:
CHANGE ORDER:

REVISION:
REV 0

DATE:
2013.05.27

SUPPLEMENTAL NO:
MSK-480.1

ADD-/DIR-
CHK-

AIR CONDITIONING & CONDENSING UNITS

TAG	DESCRIPTION	SERVICE	LOCATION	AIR FLOW			COOLING TOTAL	REMARKS	ELECTRICAL DATA			CONTROL TYPE	NOTES
				EVAPORATOR L/S	CONDENSER L/S	CFM			CONDENSER L/S	CFM	MBH		
AC-1	DUCTLESS SPLIT	MASTER TELCO 146	MASTER TELCO 146	201			5.3		1.00	15.00		INTEGRAL	
CU-2			ROOF	425			18		13.00	15.00			
AC-2	DUCTLESS SPLIT	TELCO 147	TELCO 147	366			7.0		1.00	15.00		INTEGRAL	
CU-3			ROOF	775			24		18.00	25.00			
AC-3	DUCTLESS SPLIT	SERVER 145	SERVER 145	366			10.0		1.00	15.00		INTEGRAL	
CU-4			ROOF	775			34		25.00	30.00			
CU-1	CONDENSING UNIT	MUA-2	ROOF	N/A		0	33.5	c/w	19.60	30.00		INTEGRAL	
							114.2						

NOTES:

PROJECT:

HMCS CARLETON

TITLE:

ADDENDUM M-01
AIR CONDITIONING & CONDENSING UNIT SCHEDULE



2611 QUEENSWAY DRIVE
SUITE 300
OTTAWA (ONTARIO)
CANADA K2B 8K2
TELEPHONE: 613-829-2800 FAX: 613-829-8299
WWW.GENIVAR.COM

PROJECT NO:

09-403 CARLETON

SCALE:

N.T.S.

DRAWN BY:

L.S.

CHECKED BY:

L.L. M.C.

SUPPLEMENTAL:

ADDENDUM:

REVISION:

REV 0

DATE:

2013.05.27

SUPPLEMENTAL NO:

MSK-482.1

ADD. DR. CHK.