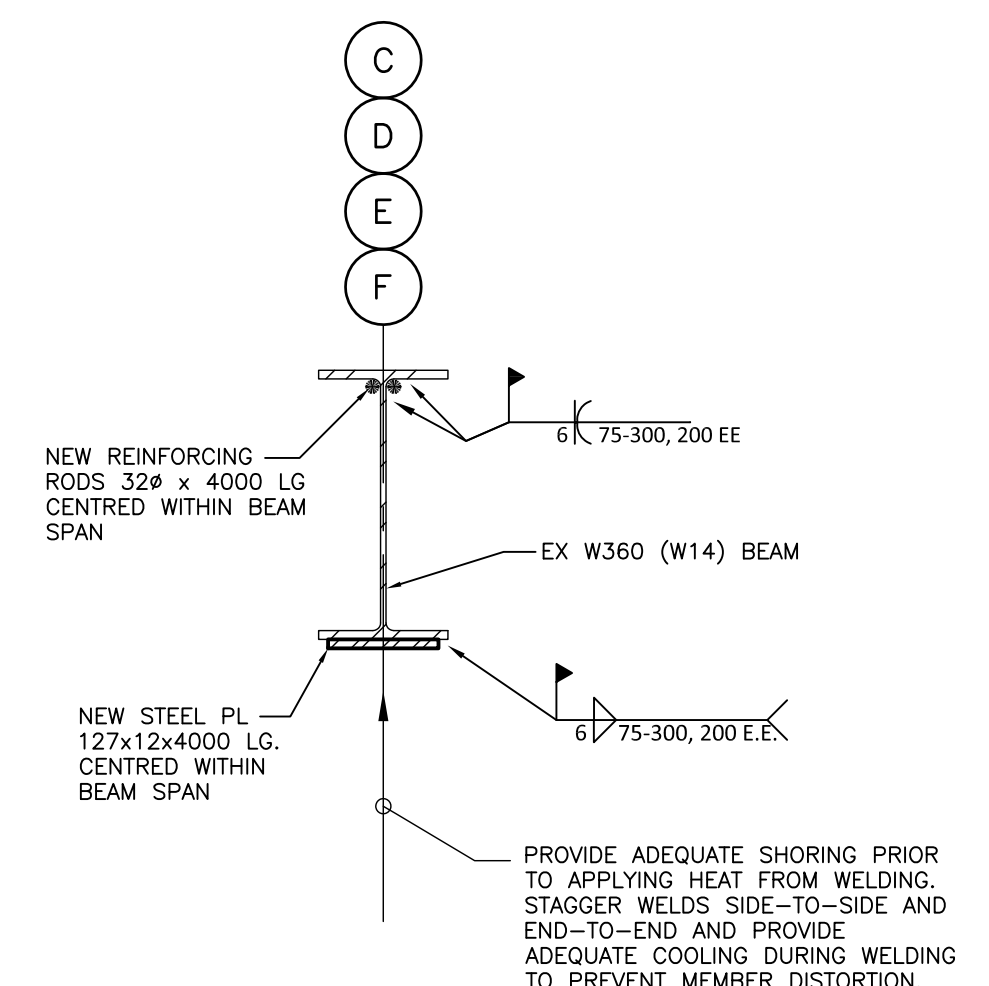
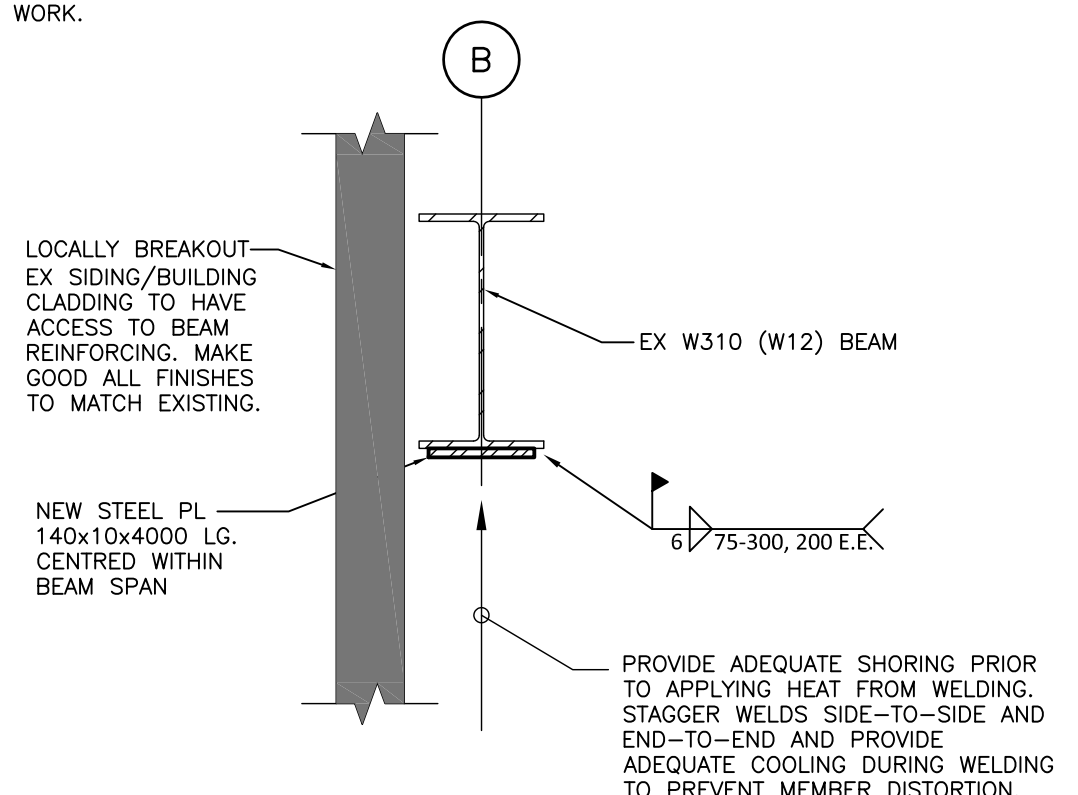
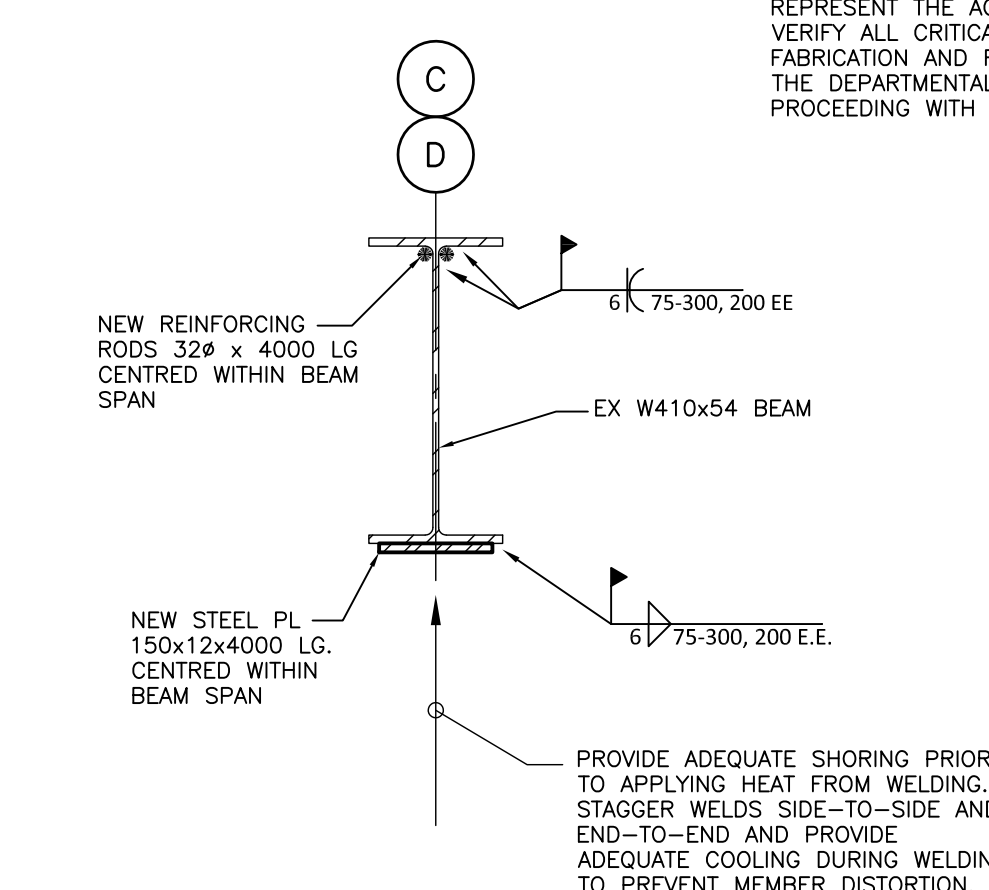


1 SECTION
S2.01|S3.02 SCALE: 1:10

2 SECTION
S3.02|S3.02 SCALE: 1:10

NOTES:
1. EXISTING CONDITIONS HAVE BEEN OBTAINED FROM AS-BUILT DRAWINGS AND MAY OR MAY NOT REPRESENT THE ACTUAL SITE CONDITIONS. SITE VERIFY ALL CRITICAL DIMENSIONS PRIOR TO FABRICATION AND REPORT ANY DISCREPANCIES TO THE DEPARTMENTAL REPRESENTATIVE PRIOR TO PROCEEDING WITH THE WORK.

NOTE TO CONTRACTOR:
ALL NEW STEEL TO BE HOT DIP GALVANIZED



3 DETAIL FOR REINFORCING EX BEAM
S2.02|S3.02 SCALE: 1:10

4 DETAIL FOR REINFORCING EX BEAM
S2.01|S3.02 SCALE: 1:10

5 DETAIL FOR REINFORCING EX BEAM
S2.01|S3.02 SCALE: 1:10



04		
03	ISSUED FOR BID	2013-05-17
02	ISSUED FOR BID	2013-04-12
01	FOR REVIEW	2013-03-01
revision		date

Do not scale drawings.
Verify all dimensions and conditions on site and immediately notify the Departmental Representative of all discrepancies.



project title
titre du projet
Rooftop Chiller Enclosure
Government of Canada Building
11 Station Street
Belleville, Ontario

drawing title
titre du dessin
SECTIONS

drawn by dessine par	DT	
designed by conc par	JK	
approved by approuve par	DK	
bid offre	IA	project manager administrateur de projets
project date date du projet	2012.06.08	
project no. no. du projet	DIALOG NO. 09769T0100 R.049400.003	
drawing no. dessine no.	S3.02	