

Consultant's Name  
 Norm de l'expert-conseil  
**Associated Engineering**

Eng. Stamp  
 Sceau de l'ingénieur  
**PROFESSIONAL ENGINEER ALBERTA**  
 GRAMM T. STEPHAN

APEGGA Permit to Practice P 3979

LEGEND:

	EXISTING FENCE
	EXISTING BERM
	NEW CELL OUTLINE
	DRAINAGE FLOW ARROW
	NEW MANHOLE
	NEW VALVE
	NEW SANITARY FORCE MAIN
	NEW DRAINAGE LINE
	NEW FENCE
	LAGOON WARNING SIGN

NOTE:  
 1. ALL DISTURBED AREAS TO BE RESTORED WITH 150mm TOPSOIL AND SEED (EXCLUDING WITHIN LAGOON CELLS)  
 2. CONTRACTOR TO ENSURE POSITIVE SITE DRAINAGE

No.	Description/Description	Date/Date
1	ADDED EXISTING CONTOURS	2013.06.27
0	ISSUE FOR TENDER AND CONSTRUCTION	2013.04.24

Revision / Revision

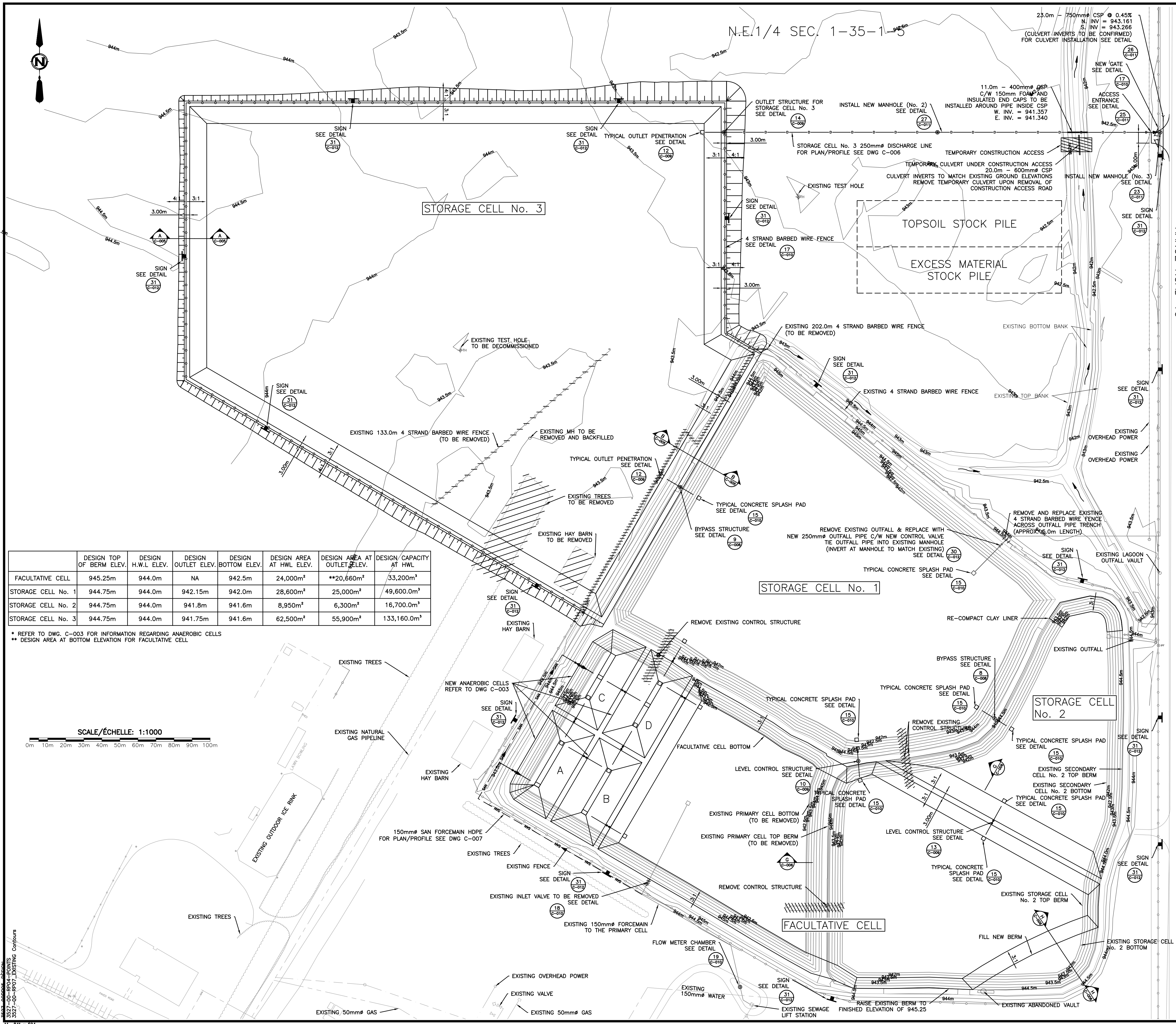
A	detail number	A
B	source drawing no.	B/C
C	detail on drawing no.	

project  
 Correctional Service Canada  
 Service Correctionnel Canada

**Sewage Infrastructure Upgrade  
 Bowden Institution  
 Innisfail, Alberta**

drawing  
 OVERALL PLAN

designed	Steven Kennedy	concept
date	2012.09.28	
drawn	Marcel Revet	dessin
date	2012.09.28	
reviewed	-	revise
date	-	
approved	-	approuvé
date	-	
Tender	Steve Phypers	Soumission
PWGCS Project Manager	Administrateur de Projets TPSGC	
project number	R.051803.001	no. du projet
drawing no.	C-002	no. du dessin



	DESIGN TOP OF BERM ELEV.	DESIGN H.W.L. ELEV.	DESIGN OUTLET ELEV.	DESIGN BOTTOM ELEV.	DESIGN AREA AT HWL ELEV.	DESIGN AREA AT OUTLET ELEV.	DESIGN CAPACITY AT HWL
FACULTATIVE CELL	945.25m	944.0m	NA	942.5m	24,000m <sup>2</sup>	**20,660m <sup>2</sup>	33,200m <sup>3</sup>
STORAGE CELL No. 1	944.75m	944.0m	942.15m	942.0m	28,600m <sup>2</sup>	25,000m <sup>2</sup>	49,600.0m <sup>3</sup>
STORAGE CELL No. 2	944.75m	944.0m	941.8m	941.6m	8,950m <sup>2</sup>	6,300m <sup>2</sup>	16,700.0m <sup>3</sup>
STORAGE CELL No. 3	944.75m	944.0m	941.75m	941.6m	62,500m <sup>2</sup>	55,900m <sup>2</sup>	133,160.0m <sup>3</sup>

\* REFER TO DWG. C-003 FOR INFORMATION REGARDING ANAEROBIC CELLS  
 \*\* DESIGN AREA AT BOTTOM ELEVATION FOR FACULTATIVE CELL

SCALE/ÉCHELLE: 1:1000  
 0m 10m 20m 30m 40m 50m 60m 70m 80m 90m 100m

Date: Jun 27, 2013  
 File: F:\012527\00\_Sewage\_Infra\_Upgrade\Drawings\100\_Civil\C-002.dwg by  
 3527\_TTB\_RP01\_Base\_Detail Base  
 3527\_TTB\_RP03\_Base\_Detail  
 3527\_TTB\_RP04\_Base\_Detail  
 3527-00-RR04-POINTS  
 3527-00-RR07-EXISTING CONTOURS  
 AT 841 x 594