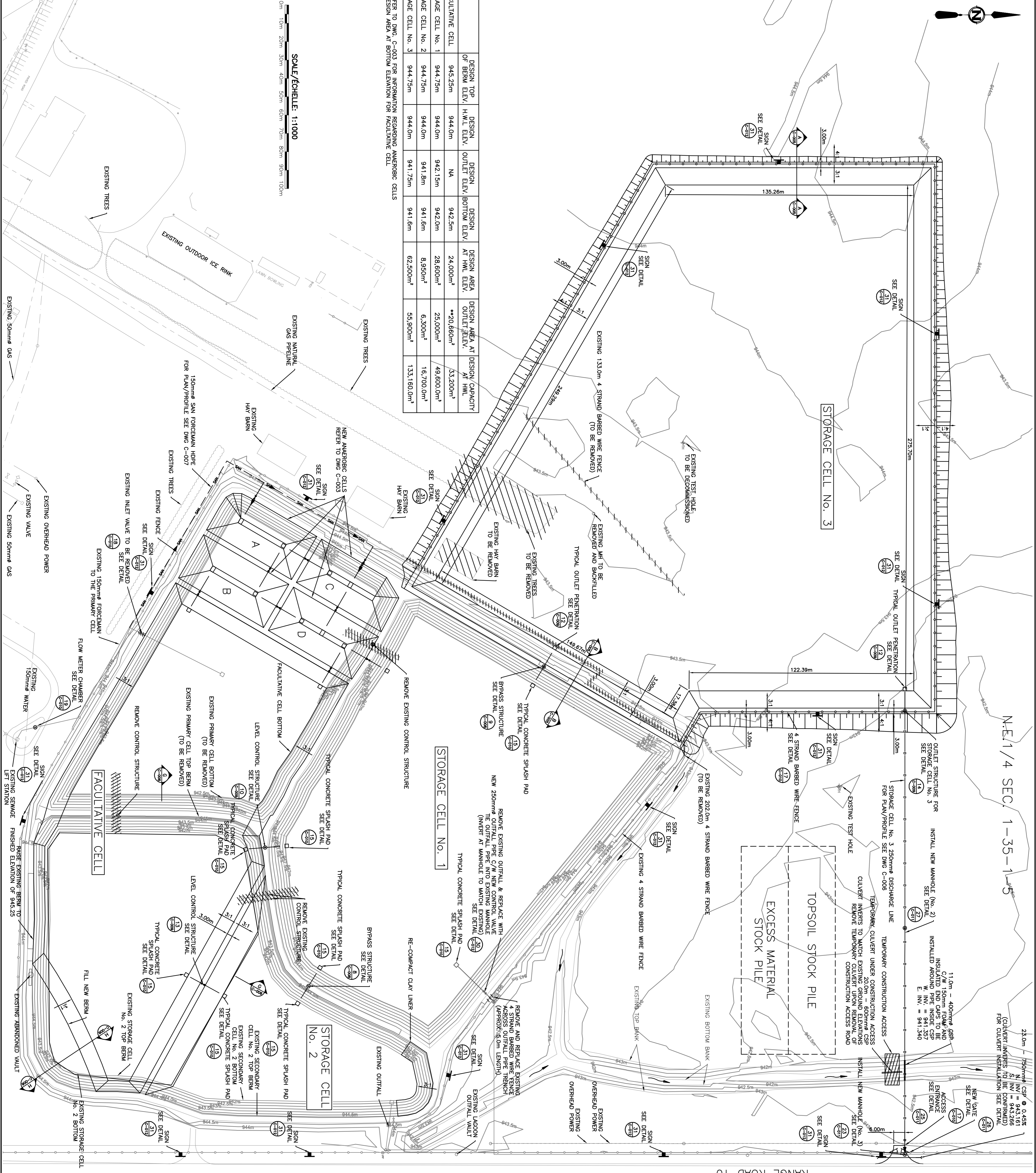


Time: 4:12pm  
 Date: Jul 07, 2013  
 File: T:\2013\3527\00\_Sewage\_Infra\_Upp\Working\_Dwgs\100\_Civil\C-002.dwg by  
 Xrefs: 3527-00-RP02\_Layout Base  
 3527-00-RP01\_Base\_Detail  
 3527-00-RP03\_photo  
 3527-00-RP04\_POINTS  
 3527-00-RP07\_EXISTING Contours



**Project:** Sewage Infrastructure Upgrade  
 Bowden Institution  
 Inimistili, Alberta

**Client:** Correctional Service Canada

**Contract:** Service Correctionnel Canada

**Project Manager:** Steve Fyfe  
 FWCSC Project Manager

**Drawn by:** Marcel Ravet

**Checked by:** Steve Fyfe

**Approved by:** Steve Fyfe

**Scale:** C-002

**Project Number:** R.051803.001

**Drawing Number:** C-002

**Legend:**

- EXISTING FENCE
- EXISTING BERM
- NEW CELL OUTLINE
- DRAINAGE FLOW ARROW
- NEW MANHOLE
- NEW VALVE
- NEW SANITARY FORCE MAIN
- NEW DRAINAGE LINE
- NEW FENCE
- LAGOON WARNING SIGN

**Notes:**

- ALL DISTURBED AREAS TO BE RESTORED WITH 150mm TOPSOIL AND SEED (EXCLUDING WITHIN LAGOON CELLS)
- CONSTRUCTION TO ENSURE POSITIVE SITE DRAINAGE

**Revisions:**

No.	Description/Description	Date/Date
2	ADDED DIMENSIONS TO CELL 3 FLOOR BOTTOM	2013.07.07
1	ADDED EXISTING CONTOURS	2013.06.27
0	ISSUE FOR TENDER AND CONSTRUCTION	2013.04.24

**Associated Engineering**

Professional Engineer  
 G. Stump  
 Eng. Stamp

Public Works and Government Services Canada  
 Services publics et Services gouvernementaux Canada

Client Services Team  
 Alberta Méridional  
 Southern Alberta Operations Branch

Le Client Entretien / l'équipe Alberta Méridional  
 Branches d'Opérations