



**SECTION 05 - METALS / 5.10000 - ROOFING**

DOGS AND FLASHINGS

CONTRACTOR SHALL VERIFY THE STEEL FABRIC IS ACCORDANCE WITH THE LATEST EDITION OF THE NATIONAL BUILDING CODE OF CANADA AND ALL APPLICABLE SUPPLEMENTARY AND LOCAL BY-LAWS

FROM A FACILITY TO EXHAUST THE EXHAUST SYSTEMS. THE CONTRACTOR SHALL VERIFY THE STEEL FABRIC IS ACCORDANCE WITH THE LATEST EDITION OF THE NATIONAL BUILDING CODE OF CANADA AND ALL APPLICABLE SUPPLEMENTARY AND LOCAL BY-LAWS

CONTRACTOR SHALL VERIFY THE STEEL FABRIC IS ACCORDANCE WITH THE LATEST EDITION OF THE NATIONAL BUILDING CODE OF CANADA AND ALL APPLICABLE SUPPLEMENTARY AND LOCAL BY-LAWS

CONTRACTOR SHALL VERIFY THE STEEL FABRIC IS ACCORDANCE WITH THE LATEST EDITION OF THE NATIONAL BUILDING CODE OF CANADA AND ALL APPLICABLE SUPPLEMENTARY AND LOCAL BY-LAWS

**05.10.00 - ROOFING**

**PART 1 - GENERAL**

- 1.1. SECTION INCLUDES:
  - 1.1.1. ROOFING REQUIREMENTS
  - 1.1.2. ACCORDING TO SHAWMOS CODE OF CANADA IN CONFORMANCE WITH CAN-514 AND THE NATIONAL BUILDING CODE OF CANADA
  - 1.1.3. THE MAXIMUM TEMPERATURE RISE OF STEEL FIRE RATED DOGS SHALL CONFORM TO THE NATIONAL BUILDING CODE OF CANADA UNDER 2.3.1.1.1.1.1.
  - 1.1.4. THE CONTRACTOR SHALL VERIFY THE STEEL FABRIC IS ACCORDANCE WITH THE LATEST EDITION OF THE NATIONAL BUILDING CODE OF CANADA AND ALL APPLICABLE SUPPLEMENTARY AND LOCAL BY-LAWS

**PART 2 - PRODUCTS**

- 2.1. MANUFACTURERS:
  1. ACCEPTABLE MANUFACTURERS:
    - 1.1. MCMC COMPANY OF CANADA LIMITED
    - 1.2. MCMC COMPANY OF CANADA LIMITED
    - 1.3. MCMC COMPANY OF CANADA LIMITED
    - 1.4. MCMC COMPANY OF CANADA LIMITED
    - 1.5. MCMC COMPANY OF CANADA LIMITED

- 2.2. STEEL DOGS:
  1. FABRICATED U.G. LABELLED DOGS, MINIMUM 1.2mm SURFACE SHEET, GALVANNEAL WIRE ZINC COAT
  2. FABRICATED U.G. LABELLED DOGS, MINIMUM 1.2mm SURFACE SHEET, GALVANNEAL WIRE ZINC COAT
  3. FABRICATED U.G. LABELLED DOGS, MINIMUM 1.2mm SURFACE SHEET, GALVANNEAL WIRE ZINC COAT

**PART 3 - EXECUTION**

- 3.1. INSTALLATION:
  - 1.1. FABRICATED U.G. LABELLED DOGS, MINIMUM 1.2mm SURFACE SHEET, GALVANNEAL WIRE ZINC COAT
  - 1.2. FABRICATED U.G. LABELLED DOGS, MINIMUM 1.2mm SURFACE SHEET, GALVANNEAL WIRE ZINC COAT
  - 1.3. FABRICATED U.G. LABELLED DOGS, MINIMUM 1.2mm SURFACE SHEET, GALVANNEAL WIRE ZINC COAT

CONTRACTOR SHALL VERIFY THE STEEL FABRIC IS ACCORDANCE WITH THE LATEST EDITION OF THE NATIONAL BUILDING CODE OF CANADA AND ALL APPLICABLE SUPPLEMENTARY AND LOCAL BY-LAWS

CONTRACTOR SHALL VERIFY THE STEEL FABRIC IS ACCORDANCE WITH THE LATEST EDITION OF THE NATIONAL BUILDING CODE OF CANADA AND ALL APPLICABLE SUPPLEMENTARY AND LOCAL BY-LAWS

CONTRACTOR SHALL VERIFY THE STEEL FABRIC IS ACCORDANCE WITH THE LATEST EDITION OF THE NATIONAL BUILDING CODE OF CANADA AND ALL APPLICABLE SUPPLEMENTARY AND LOCAL BY-LAWS

CONTRACTOR SHALL VERIFY THE STEEL FABRIC IS ACCORDANCE WITH THE LATEST EDITION OF THE NATIONAL BUILDING CODE OF CANADA AND ALL APPLICABLE SUPPLEMENTARY AND LOCAL BY-LAWS

- 3.2. SCHEDULE OF FINISHES:
  1. EXISTING INTERIOR CONCRETE AND MASONRY SURFACES
  2. EXISTING INTERIOR CONCRETE AND MASONRY SURFACES
  3. EXISTING INTERIOR CONCRETE AND MASONRY SURFACES
  4. EXISTING INTERIOR CONCRETE AND MASONRY SURFACES

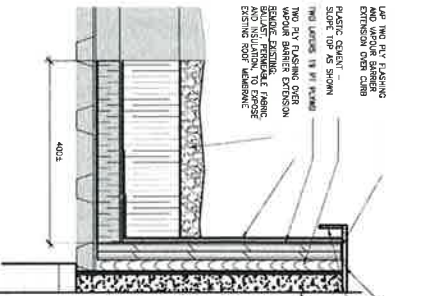
- 3.3. SCHEDULE OF FINISHES:
  1. EXISTING INTERIOR CONCRETE AND MASONRY SURFACES
  2. EXISTING INTERIOR CONCRETE AND MASONRY SURFACES
  3. EXISTING INTERIOR CONCRETE AND MASONRY SURFACES
  4. EXISTING INTERIOR CONCRETE AND MASONRY SURFACES

- 3.4. SCHEDULE OF FINISHES:
  1. EXISTING INTERIOR CONCRETE AND MASONRY SURFACES
  2. EXISTING INTERIOR CONCRETE AND MASONRY SURFACES
  3. EXISTING INTERIOR CONCRETE AND MASONRY SURFACES
  4. EXISTING INTERIOR CONCRETE AND MASONRY SURFACES

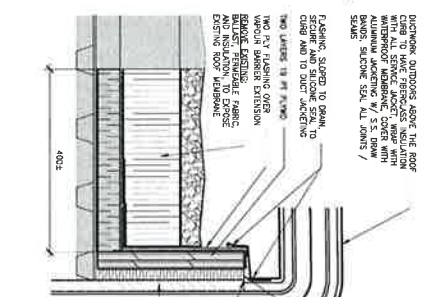
- 3.5. SCHEDULE OF FINISHES:
  1. EXISTING INTERIOR CONCRETE AND MASONRY SURFACES
  2. EXISTING INTERIOR CONCRETE AND MASONRY SURFACES
  3. EXISTING INTERIOR CONCRETE AND MASONRY SURFACES
  4. EXISTING INTERIOR CONCRETE AND MASONRY SURFACES

- 3.6. SCHEDULE OF FINISHES:
  1. EXISTING INTERIOR CONCRETE AND MASONRY SURFACES
  2. EXISTING INTERIOR CONCRETE AND MASONRY SURFACES
  3. EXISTING INTERIOR CONCRETE AND MASONRY SURFACES
  4. EXISTING INTERIOR CONCRETE AND MASONRY SURFACES

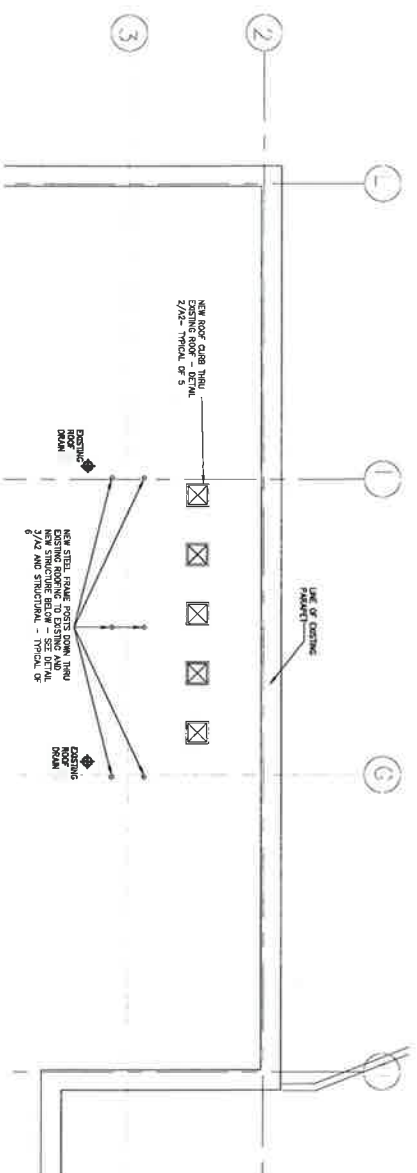
- 3.7. SCHEDULE OF FINISHES:
  1. EXISTING INTERIOR CONCRETE AND MASONRY SURFACES
  2. EXISTING INTERIOR CONCRETE AND MASONRY SURFACES
  3. EXISTING INTERIOR CONCRETE AND MASONRY SURFACES
  4. EXISTING INTERIOR CONCRETE AND MASONRY SURFACES



3. STRUCTURAL PENETRATION DETAIL  
SCALE: 1:5



2. MECHANICAL PENETRATION DETAIL  
SCALE: 1:5



1. PARTIAL ROOF PLAN  
SCALE: 1:50



10.06.2013	TENDER	CHRYSTINA	2013.06.01	2013.06.01	1:50 UNO	CHRYSTINA	2013.06.01
24.05.2013	100% REVIEW	SHYLA	2013.06.01	2013.06.01	1:50 UNO	CHRYSTINA	2013.06.01
10.05.2013	50% REVIEW	JJH	2013.06.01	2013.06.01	1:50 UNO	CHRYSTINA	2013.06.01

CHEMICAL ROOM ACID STORAGE RETROFIT

2013.06.01

AZ

- GENERAL NOTES**
- THE DESIGN AND CONSTRUCTION SHALL BE IN ACCORDANCE WITH THE NATIONAL BUILDING CODE OF CANADA AND REFERENCED STANDARDS THEREIN
  - ALL DIMENSIONS ARE IN MILLIMETERS UNLESS NOTED. THE CONTRACTOR SHALL VERIFY DIMENSIONS BEFORE CONSTRUCTION AND REPORT DISCREPANCIES BEFORE PROCEEDING WITH THE WORK. DO NOT SCALE DRAWINGS

**STRUCTURAL STEEL NOTES**

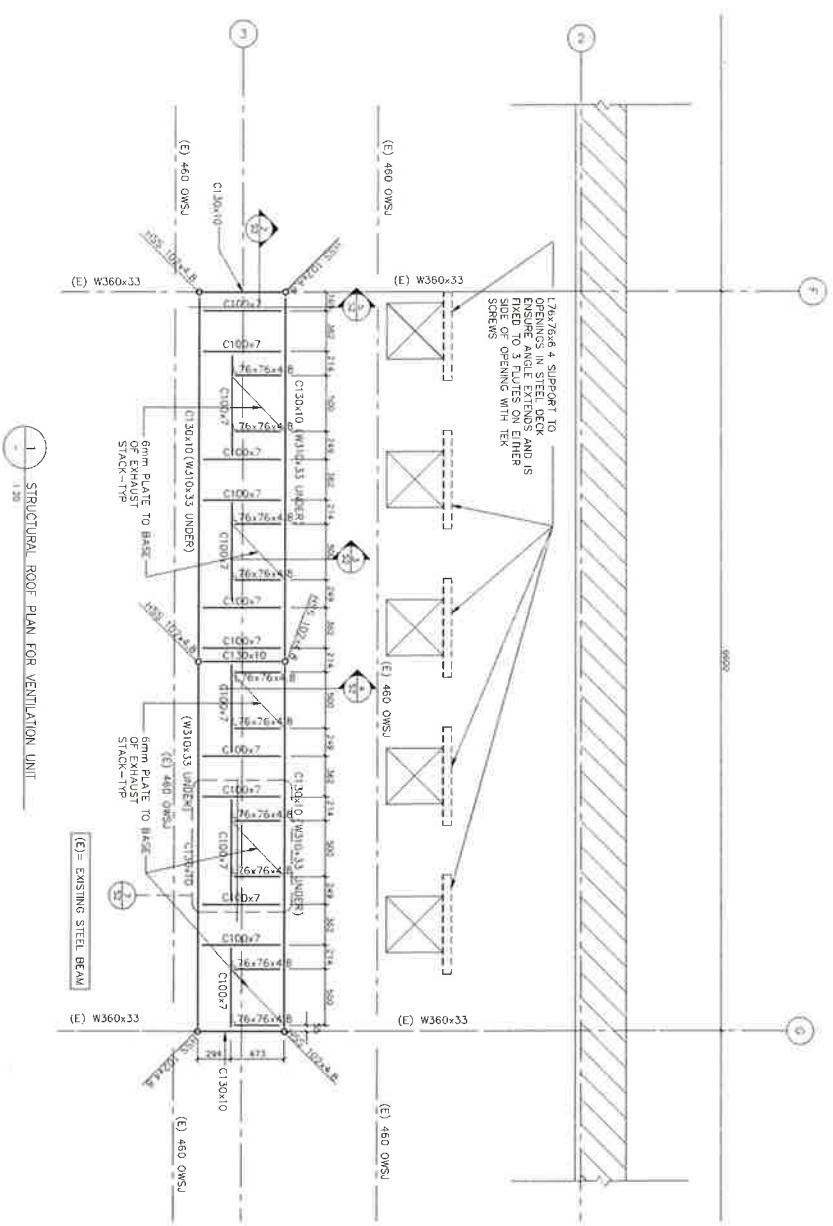
- FABRICATE AND ERECT STRUCTURAL STEEL TO CAN/CSA S16.1
- PROVIDE STRUCTURAL STEEL TO CSA G40.21 WITH THE FOLLOWING GRADES

SECTION TYPE	GRADE OF STEEL (MPa)
WIDE FLANGE BEAMS & COLUMNS	350M
CHANNELS AND ANGLES	350M
HSS SECTIONS (CLASS C)	350M
STRUCTURAL BARS AND PLATES	300M

- FABRICATOR TO BE CERTIFIED AS A DIVISION 1 or 2 COMPANY UNDER CSA W47.1
- SHOUP SHOP DRAWINGS FOR REVIEW PRIOR TO FABRICATION
- DIMENSIONS SHOWN ARE TO CENTRE LINES OF SECTIONS AND TO BACK OF CHANNELS OR ANGLES. ELEVATIONS SHOWN ARE TO TOP OF STEEL UNO WELD TO CSA W49. BY FABRICATORS QUALIFIED TO CSA W47.1
- FIELD WELDING AND FIELD MODIFICATION OF STRUCTURAL STEEL SHALL NOT BE ALLOWED WITHOUT PRIOR REVIEW AND APPROVAL BY THE ENGINEER
- CONNECTIONS NOT DETAILED ON THE STRUCTURAL DRAWINGS SHALL BE DESIGNED AND DETAILED BY THE STEEL FABRICATOR. ALL SHOP DRAWINGS MUST INCLUDE A STAMP BY A PROFESSIONAL ENGINEER REGISTERED IN THE PROVINCE OF SASKATCHEWAN
- MINIMUM WELDS FOR CONNECTIONS SHALL BE 5 MM FILLET WELD AND WHERE EXPOSED IN FINISHED BUILDING WELD SHALL BE GROUND SMOOTH
- CLEAN ALL STEEL PRIOR TO PAINTING TO SSPC SURFACE PREPARATION SPECIFICATION NO. 3 "POWER TOOL CLEANING"
- PAINT STEEL SURFACES WITH ONE COAT OF PRIMER TO CSC/CPMA 1-73A. AFTER ERECTION PRIME ALL WELDS, ABRASIONS, BOLLIED CONNECTIONS AND ALL OTHER SURFACES NOT SHOP PRIMED, EXCEPT SURFACES TO BE IN CONTACT WITH CONCRETE FINISH COAT AS PER ARCHITECT'S SPECIFICATION

**DESIGN LOADS**

DEAD = 1.0 kN/m<sup>2</sup>  
 IMPOSED (FROM EQUIPMENT) = 1.0 kN/m<sup>2</sup>



DATE	DESCRIPTION	BY	CHKD
07.06.2013	TENDER		
24.05.2013	100% REVIEW		
10.05.2013	50% REVIEW		

DATE	DESCRIPTION	BY	CHKD
2013.06.07	NP		

NO.	NAME	DESIGNATION
1	2013	STRUCTURAL DESIGN

NO.	NAME	DESIGNATION
1	2013	STRUCTURAL DESIGN

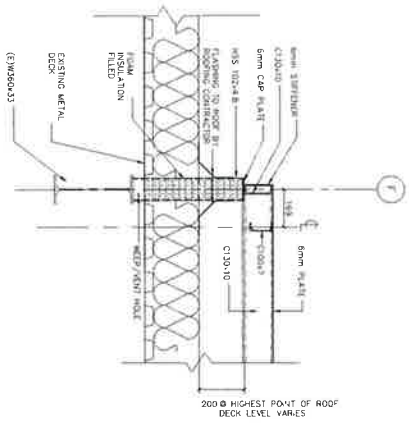


**CHEMICAL ROOM ACID STORAGE RETROFIT**

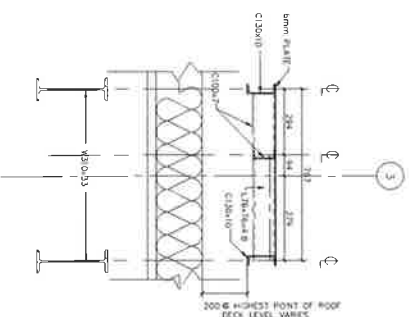
STATTEC CONSULTING LTD.

STATTEC

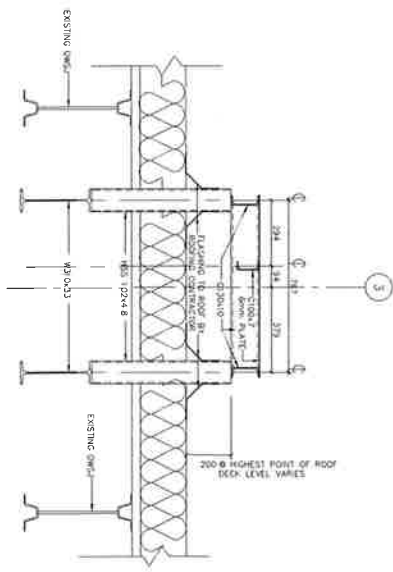
STATTEC CONSULTING LTD.  
 100 - 25 - 24th Street East  
 Saskatoon, SK S7N 1A8  
 Tel: 306.687.2200  
 Fax: 306.684.6333



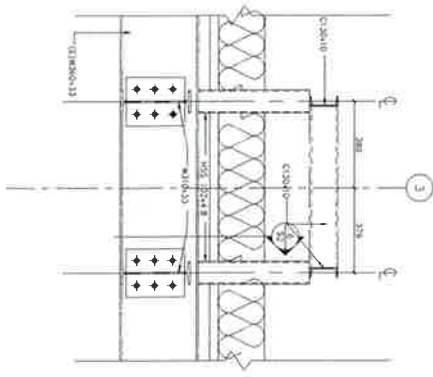
SECTION 2  
1:10



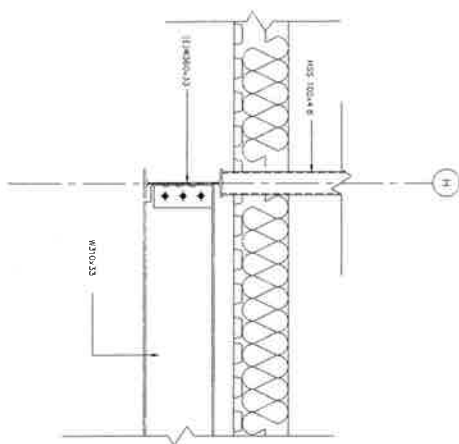
SECTION 3  
1:10



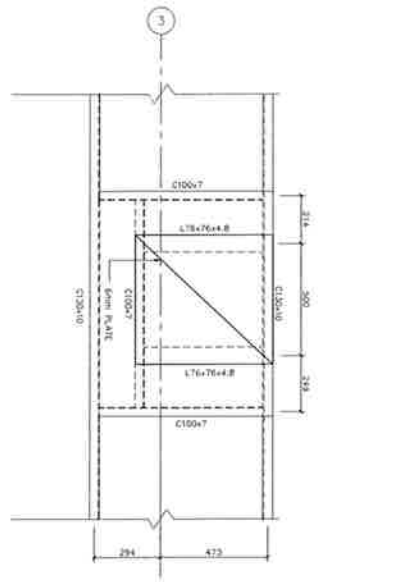
SECTION 4  
1:10



SECTION 5  
1:10



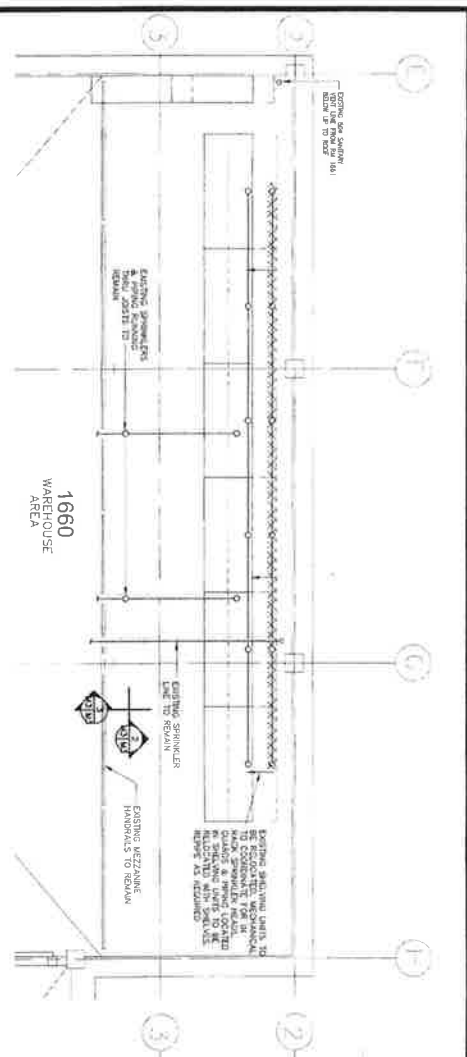
SECTION 6  
1:10



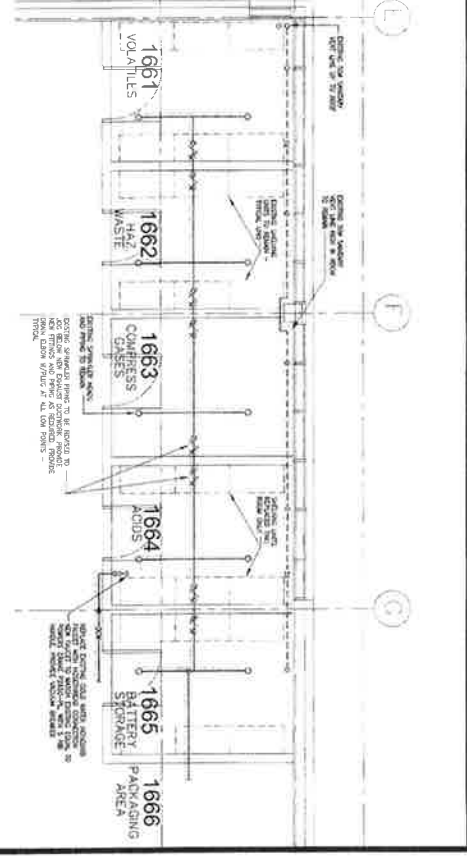
SECTION 7  
1:10  
PLAN ON EXHAUST BASE

07.06.2013	TENDER	2013.06.07	Chemical Room Acid Storage Retrofit
24.05.2013	100% REVIEW	2013.06.07	Structural Scale
10.05.2013	50% REVIEW		Structural Sections

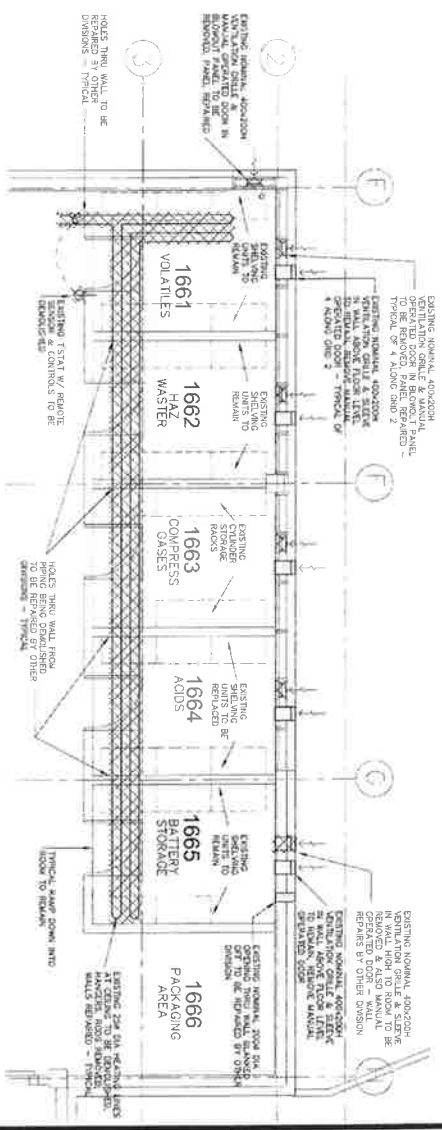
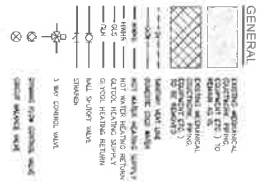
CHEMICAL ROOM ACID STORAGE RETROFIT



3 PARTIAL MEZZANINE PLAN - FIRE PROTECTION - DEMOLITION, NEW  
SCALE 1:50



2 PARTIAL MAIN FLOOR PLAN - FIRE PROTECTION - DEMOLITION, NEW  
SCALE 1:50



1 PARTIAL MAIN FLOOR PLAN - HEATING, VENTILATION - DEMOLITION  
SCALE 1:50

Stantec  
100 King Street West  
Toronto, Ontario M5X 1C7  
Canada  
Tel: 416 593 9300  
Fax: 416 593 9301  
www.stantec.com



Stantec  
100 King Street West  
Toronto, Ontario M5X 1C7  
Canada  
Tel: 416 593 9300  
Fax: 416 593 9301  
www.stantec.com



10.06.2013 TENDER  
24.05.2013 100% REVIEW  
10.05.2013 50% REVIEW  
DATE

IBA  
20130410  
1:50

MECHANICAL  
DEMOLITION/NEW

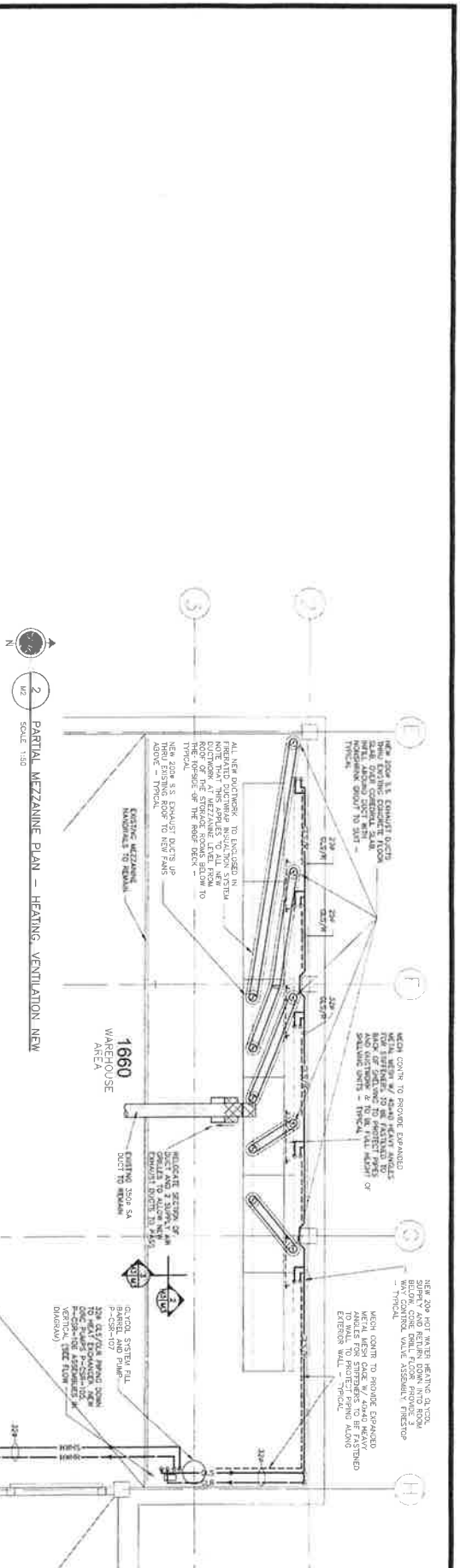
1:50



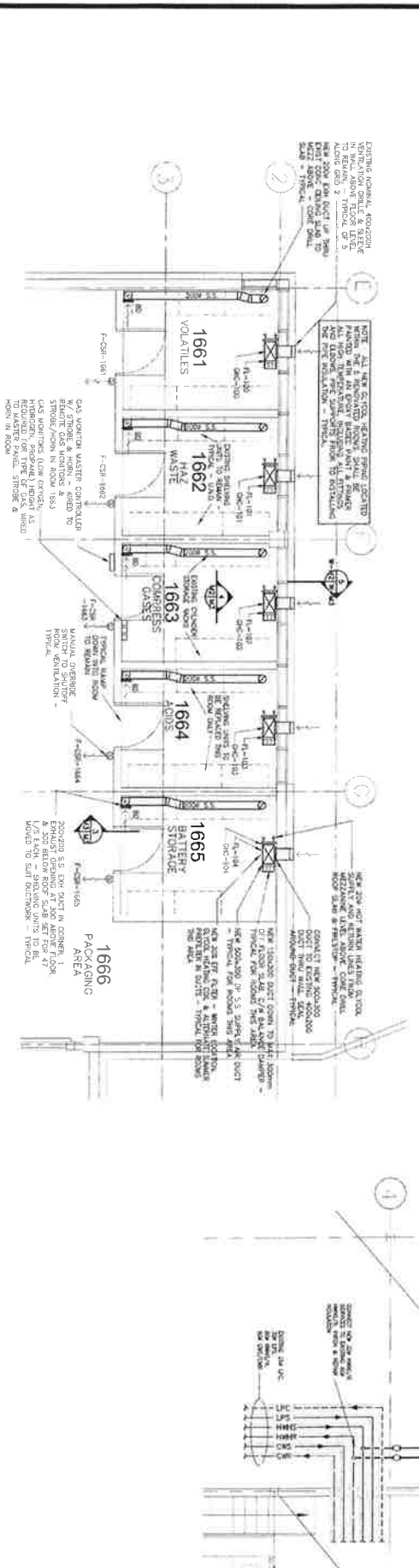
1:50

M1

CHEMICAL ROOM ACID STORAGE RETROFIT



2 PARTIAL MEZZANINE PLAN - HEATING, VENTILATION NEW



1 PARTIAL MAIN FLOOR PLAN - HEATING, VENTILATION NEW



**UNIVERSITY OF ALBERTA**  
**ENERGY & POLITICAL TECHNOLOGY**  
 CENTRE FOR ENERGY INNOVATION  
 Service Consulting Ltd  
 2110 SHERBOURNE DRIVE SW  
 CALGARY, AB T2C 1V1

**StanTec**  
 Strategic Consulting Ltd  
 10000 100th Avenue SE  
 Burnaby, BC V3J 1K8  
 Tel: 604.291.8300  
 Fax: 604.291.8309  
 www.stan-tec.com

**10.06.2013** TENDER  
**24.05.2013** 100% REVIEW  
**10.05.2013** 50% REVIEW  
**NEW**

**10.06.2013** 1:50  
**2013.04.10**  
**MECHANICAL**

**CLIENT:** CHEMICAL ROOM ACID STORAGE RETROFIT  
**DATE:** 2013.04.10

**CHEMICAL ROOM ACID STORAGE RETROFIT**

**M2**









DIS/LOCATION	DESCRIPTION	LOCATION	KVA/HP	V-RANGE	LOAD	FLA	MCA	SOURCE	BREAKER	FEDDER	DISCONNECT	REMARKS
F-CB-1181	DISCONNECT	100	125 HP	120V-14	1250W-1.8	7.50	10.0	100	100	100	100	NOTE 1
F-CB-1182	DISCONNECT	100	125 HP	120V-14	1250W-1.8	7.50	10.0	100	100	100	100	NOTE 1
F-CB-1183	DISCONNECT	100	125 HP	120V-14	1250W-1.8	7.50	10.0	100	100	100	100	NOTE 1
F-CB-1184	DISCONNECT	100	125 HP	120V-14	1250W-1.8	7.50	10.0	100	100	100	100	NOTE 1
F-CB-1185	DISCONNECT	100	125 HP	120V-14	1250W-1.8	7.50	10.0	100	100	100	100	NOTE 1
F-CB-1186	DISCONNECT	100	125 HP	120V-14	1250W-1.8	7.50	10.0	100	100	100	100	NOTE 1
F-CB-1187	DISCONNECT	100	125 HP	120V-14	1250W-1.8	7.50	10.0	100	100	100	100	NOTE 1

NOTES:  
 1. NEW EXPANSION PANS - F-CB-1181 TO F-CB-1187 TO BE SERVICED FROM MAIN PANEL LOCATED IN BULLER ROOM 2870. THESE CIRCUIT BREAKERS SHALL BE SERVICED FROM OWN ELECTRICAL EQUIPMENT THE CONTRACTOR IS TO CONSIDER THESE WHERE POSSIBLE. EXTEND CONDUIT TO SUIT LOCATION OF EXPANSION PANS ORANGE ELECTRICAL EQUIPMENT THE CONTRACTOR IS TO CONSIDER THESE VALUES WITH MECHANICAL SHOP DRAWINGS AND MAKE-UP VALUES AND MAKE ADJUSTMENTS TO ELECTRICAL CIRCUIT DIAGRAM, CONTROL AND PROTECTION AS NECESSARY.

LEGEND

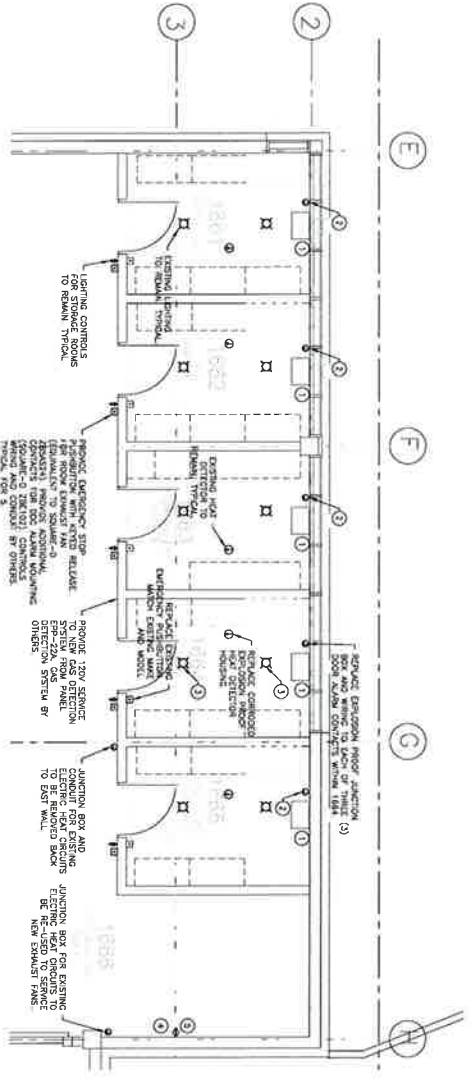
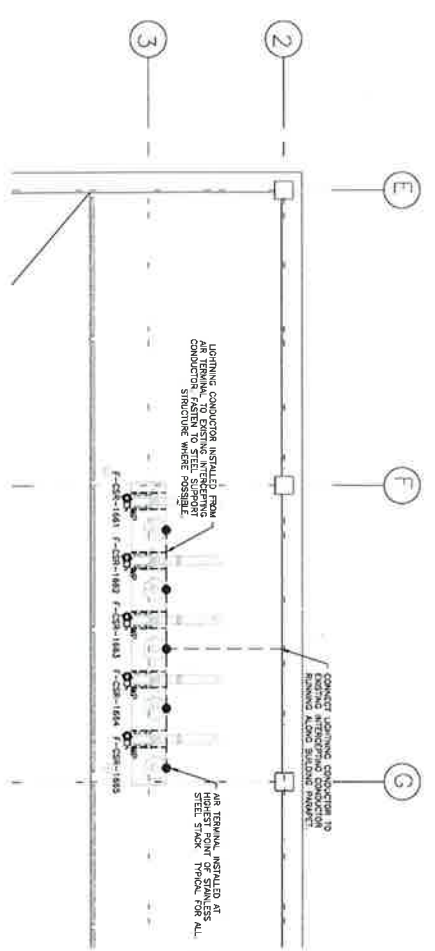
- LIVE VOLTAGE SWITCH
- ⊠ SURFACE MOUNT LUMINAIRE
- ⊙ FRET DETECTOR
- ⊕ WATER CONNECTION (C/W DISCONNECT (W/ TO DENOTE REWIRED ROOM))
- ⊖ JUNCTION BOX
- ⊙ REPAIR/REPLACE (CIRCUMSCRIBE HELP BUTTON)
- ⊙ 5-1/8" RECEPTACLE
- ⊙ AIR TERMINAL
- LIGHTING CONDUCTOR

GENERAL NOTES

- LIGHTING FIXTURES TO BE SERVICED FROM MAIN PANEL TO REMAIN IN PLACE.
- CHOOSE FINISH SIZES.
- REPAIR/REPLACE OR REPLACE WITHIN STORAGE ROOMS TO REMAIN UNLESS NOTED OTHERWISE ON PLANS.
- FRET DETECTOR TO BE SERVICED FROM MAIN PANEL TO REMAIN IN PLACE.
- REPAIR/REPLACE OR REPLACE WITHIN STORAGE ROOMS TO REMAIN UNLESS NOTED OTHERWISE ON PLANS.
- REPAIR/REPLACE OR REPLACE WITHIN STORAGE ROOMS TO REMAIN UNLESS NOTED OTHERWISE ON PLANS.
- REPAIR/REPLACE OR REPLACE WITHIN STORAGE ROOMS TO REMAIN UNLESS NOTED OTHERWISE ON PLANS.
- REPAIR/REPLACE OR REPLACE WITHIN STORAGE ROOMS TO REMAIN UNLESS NOTED OTHERWISE ON PLANS.
- REPAIR/REPLACE OR REPLACE WITHIN STORAGE ROOMS TO REMAIN UNLESS NOTED OTHERWISE ON PLANS.
- REPAIR/REPLACE OR REPLACE WITHIN STORAGE ROOMS TO REMAIN UNLESS NOTED OTHERWISE ON PLANS.

KEYNOTES

- REMOVE EXISTING 240V NEW ELECTRIC HEATER, COMMON JUNCTION BOX ON EAST WALL OF ROOM 1000. REMOVE EXISTING 240V NEW ELECTRIC HEATER, COMMON JUNCTION BOX ON EAST WALL OF ROOM 1000. REMOVE EXISTING 240V NEW ELECTRIC HEATER, COMMON JUNCTION BOX ON EAST WALL OF ROOM 1000. REMOVE EXISTING 240V NEW ELECTRIC HEATER, COMMON JUNCTION BOX ON EAST WALL OF ROOM 1000.
- REPAIR/REPLACE OR REPLACE WITHIN STORAGE ROOMS TO REMAIN UNLESS NOTED OTHERWISE ON PLANS.
- REPAIR/REPLACE OR REPLACE WITHIN STORAGE ROOMS TO REMAIN UNLESS NOTED OTHERWISE ON PLANS.
- REPAIR/REPLACE OR REPLACE WITHIN STORAGE ROOMS TO REMAIN UNLESS NOTED OTHERWISE ON PLANS.
- REPAIR/REPLACE OR REPLACE WITHIN STORAGE ROOMS TO REMAIN UNLESS NOTED OTHERWISE ON PLANS.
- REPAIR/REPLACE OR REPLACE WITHIN STORAGE ROOMS TO REMAIN UNLESS NOTED OTHERWISE ON PLANS.
- REPAIR/REPLACE OR REPLACE WITHIN STORAGE ROOMS TO REMAIN UNLESS NOTED OTHERWISE ON PLANS.
- REPAIR/REPLACE OR REPLACE WITHIN STORAGE ROOMS TO REMAIN UNLESS NOTED OTHERWISE ON PLANS.
- REPAIR/REPLACE OR REPLACE WITHIN STORAGE ROOMS TO REMAIN UNLESS NOTED OTHERWISE ON PLANS.
- REPAIR/REPLACE OR REPLACE WITHIN STORAGE ROOMS TO REMAIN UNLESS NOTED OTHERWISE ON PLANS.



10-06-2013 TENDER  
 24-05-2013 100% REVIEW  
 10-05-2013 50% REVIEW  
 10-05-2013 NEW

2013.05.24  
 1:50

CHANGING ENGINEER  
 PROJECT MANAGER  
 CHIEF ELECTRICAL ENGINEER  
 ELECTRICAL ENGINEER

100% REVIEW  
 50% REVIEW  
 NEW

1:50

CHANGING ENGINEER  
 PROJECT MANAGER  
 CHIEF ELECTRICAL ENGINEER  
 ELECTRICAL ENGINEER

1 PARTIAL MAIN FLOOR PLAN  
 SCALE: 1/8" = 1'-0"

2 PARTIAL ROOF PLAN  
 SCALE: 1/8" = 1'-0"

CHANGING ENGINEER  
 PROJECT MANAGER  
 CHIEF ELECTRICAL ENGINEER  
 ELECTRICAL ENGINEER

