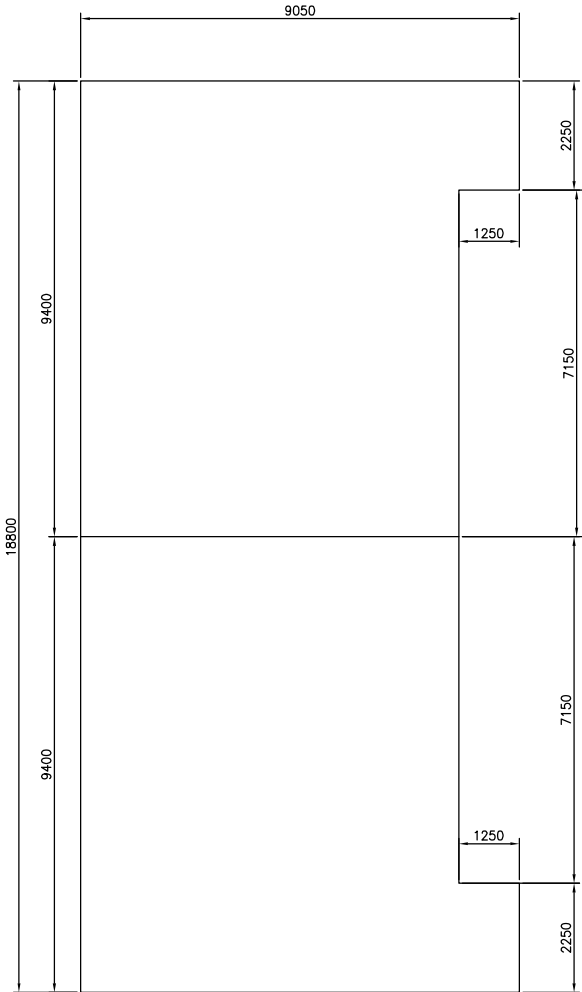


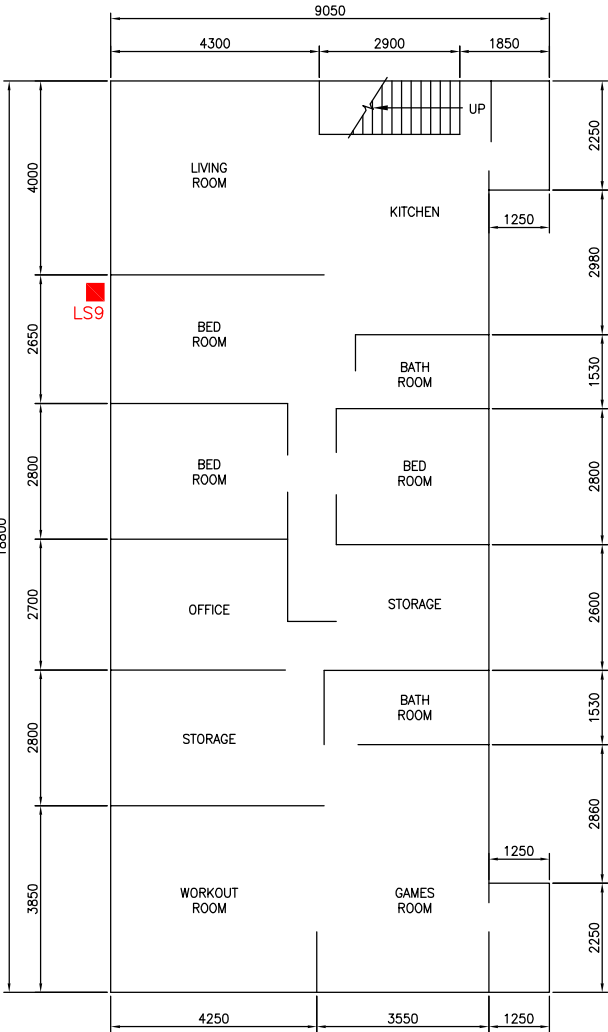
FLOOR LAYOUT

SCALE = 1:75 BOATHOUSE (B.H)



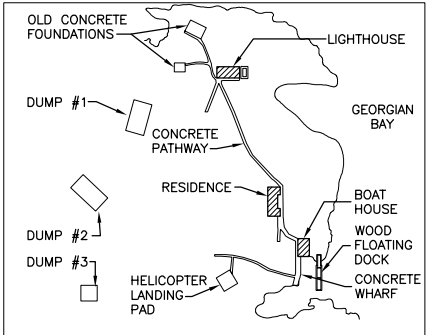
BASEMENT LAYOUT

SCALE = 1:75 RESIDENCE (R.B)



MAINFLOOR LAYOUT

SCALE = 1:75 RESIDENCE (R.B)



KEYPLAN:

LEGEND:

- LS PAINT SAMPLE
- LS LEAD SAMPLE (ABOVE CRITERIA)
- LS PCB SAMPLE (ABOVE CRITERIA)



Public Works and
Government Services Canada
Architectural and Engineering Services
Ontario Region
Travaux publics et
Services gouvernementaux Canada
Services d'architecture et de génie
Région de l'Ontario



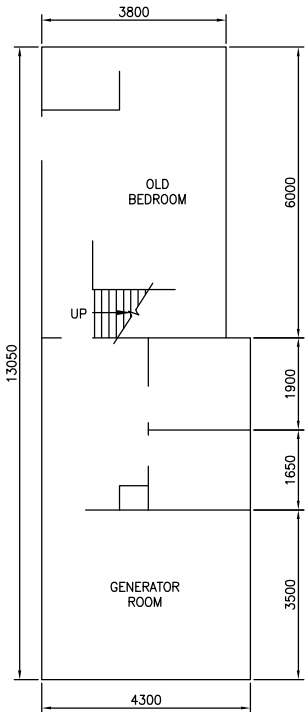
KEY MAP N.T.S.

KGS
GROUP
CONSULTING
ENGINEERS



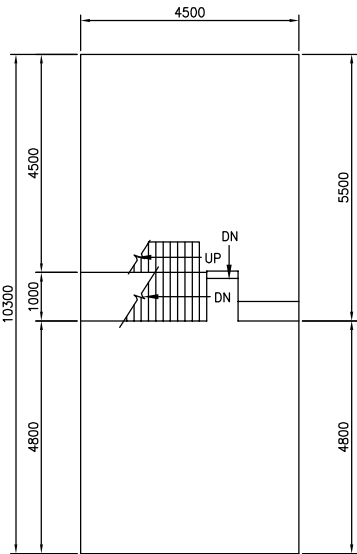
REFERENCE

1. MAP BASED FROM "AUX QUATRE POINTS CARIAUX"



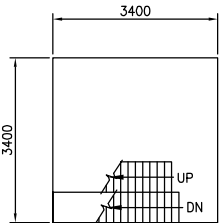
MAIN FLOOR LAYOUT

SCALE = 1:75 LIGHTHOUSE (L.H)



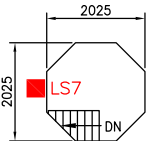
2ND FLOOR LAYOUT

SCALE = 1:75 LIGHTHOUSE (L.H)



3RD FLOOR LAYOUT

SCALE = 1:75 LIGHTHOUSE (L.H)



LIGHT FLOOR LAYOUT

SCALE = 1:75 LIGHTHOUSE (L.H)

PAINT SAMPLE ID	EXTERIOR PAINT SAMPLE DESCRIPTION	ESTIMATED QUANTITY
LIGHT TOWER AND LIGHTHOUSE BUILDING		
L.H LS-1	WHITE PAINT EXTERIOR OF LIGHTHOUSE	460m ²
L.H LS-7	RED PAINT EXTERIOR, TOP OF LIGHTHOUSE	98m ²
BOATHOUSE		
B.H LS-2	EXTERIOR RED PAINT ON TRIM	6m ²
PAC-4-LP-1	EXTERIOR OF SOUTH WALL	3m ²
PAC-4-LP-2	EXTERIOR OF RED DOOR	1.5m ²
PAC-4-LP-3	EXTERIOR OF NORTH AND WEST WALLS	30m ²
PAC-4-LP-4	EXTERIOR OF GARAGE DOOR AND EAST WALL	19m ²
RESIDENCE		
PAC-8-LP-2	EXTERIOR OF EAST AND NORTH WALLS	139m ²
PAC-8-LP-3	EXTERIOR OF WEST AND SOUTH WALLS	139m ²
R.B LS-9	EXTERIOR RED PAINT, WOOD WALKWAY ON WEST SIDE, WINDOW TRIM, WOODEN STAIRS	116.5m ²



- A Detail No.
- B No. du détail
- C drawing no. - where detail required

project title
titre du projet
GEORGIAN BAY, Ontario
GERAUX ISLAND

GEREAUX ISLAND
SITE REMEDIATION

drawing title
titre du dessin

EXTERIOR PAINT ABATEMENT

drawn by
dessiné par
GC

designed by
conçu par
GC

approved by
approuvé par
TG

tender
soumission
FINAL SPECIFICATION

project date
date du projet
MARCH 2013

project no.
no. du projet
12-0006-016

drawing no.
dessiné no.
FIGURE 6