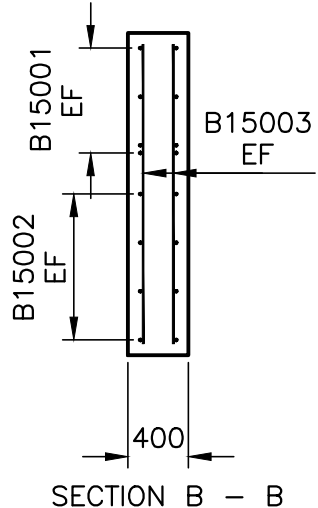


PIPE	B15001		B15002		B15003		B15004		L m	H m
DIA.	No.	LENGTH m	No.	LENGTH m	No.	LENGTH m	No.	LENGTH m		
2250	16	1.82	28	3.13	28	1.98	28	1.47	6.10	2.13



NOTES:

A: CLASS OF CONCRETE: 30MPA

B: COVER TO REINFORCING BARS: 100mm

C: EF DENOTES EACH FACE

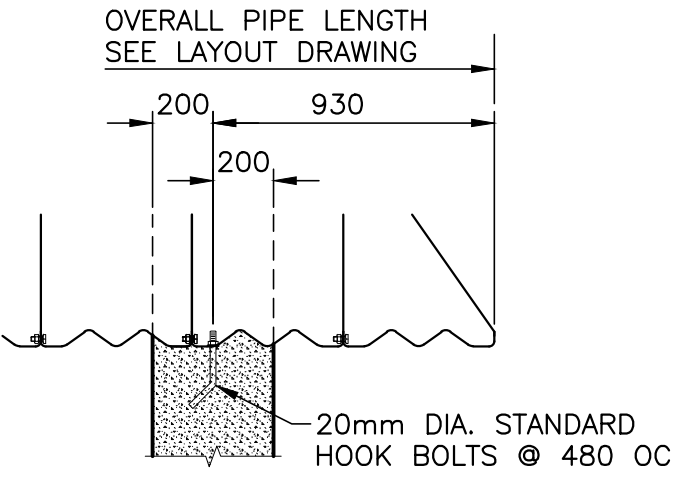
D: NUMBER OF BARS SHOWN IS FOR ONE WALL.

E: ALL DIMENSIONS ARE IN MILLIMETRES UNLESS OTHERWISE SHOWN

CUT OFF WALL FOR CIRCULAR CSP

SCALE: 1:50

0m 1m 2m 3m 4m 5m



BOLT DETAIL SIDE VIEW

SCALE: 1:25

0mm 500mm 1000mm 1500mm 2000mm 2500mm

0	ISSUED FOR TENDER	MAR/11 2013
revisions		date
project		projet

CULVERT #13 REHABILITATION
STA. 9+701
TRANS CANADA HIGHWAY
TERRA NOVA NATIONAL PARK

drawing dessin

**CUT OFF WALL FOR
CIRCULAR CSP**

designed	B. Sheppard	conçu
date	Oct. 2012	
drawn	T. Monard	dessiné
date	Oct. 2012	
approved	B. Sheppard	approuvé
date	March 11, 2013	

Tender *B. Sheppard* March 11, 2013 Soumission

PWGSC Project Manager Administrateur de projets TPSCG

project number no. du projet
R.062426.001

drawing no. no. du dessin

C5