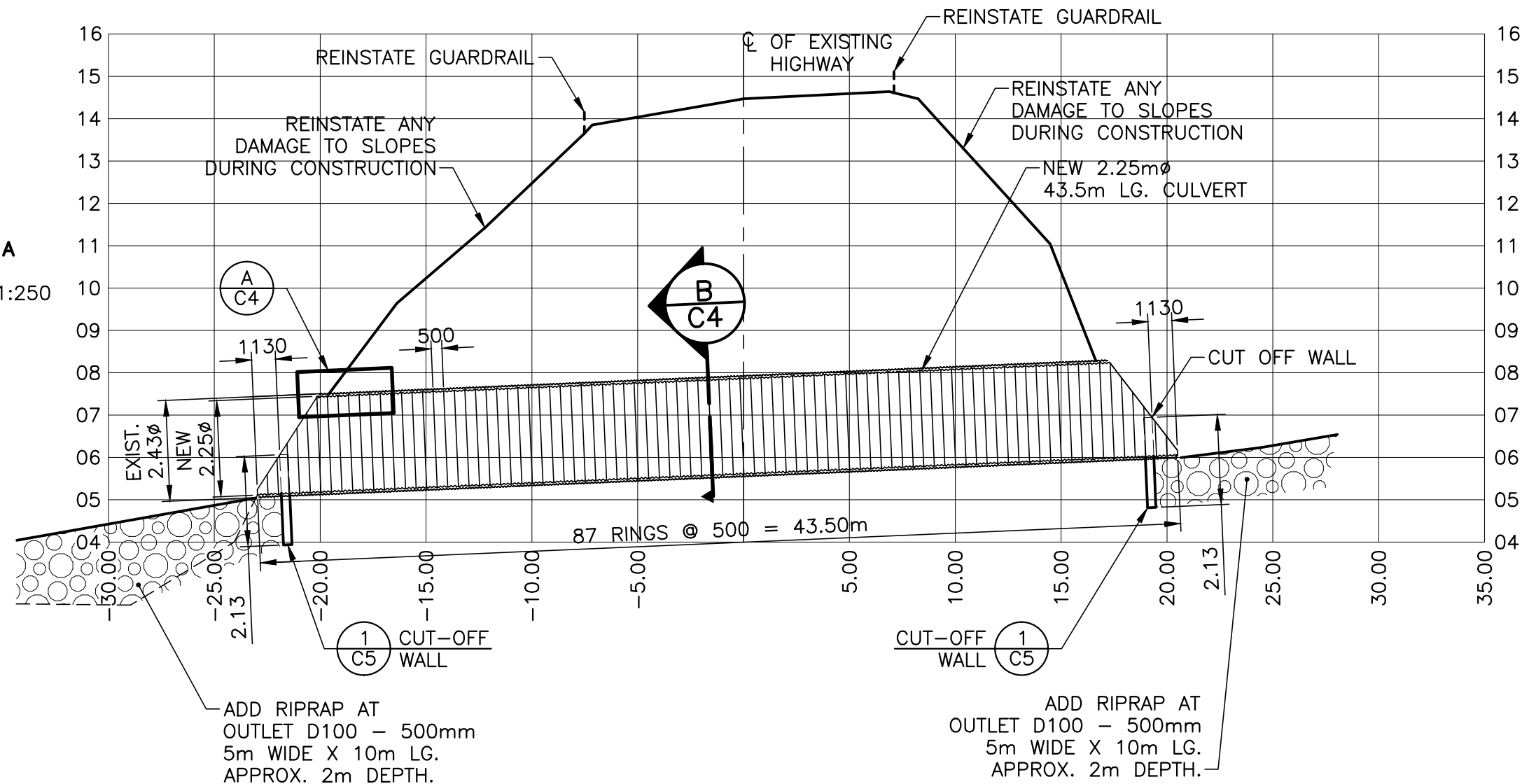


NEW 2250mm $\phi$  RELINER  
43.5m LG.

SECTION A - A  
NEW  
SCALE: HOR. 1:250  
VERT. 1:125



CULVERT #13 REHABILITATION  
STA. 9+701  
TRANS CANADA HIGHWAY  
TERRA NOVA NATIONAL PARK

SECTION A - A  
NEW RELINER

designed B. Sheppard  
date Oct. 2012  
drawn T. Monard  
date Oct. 2012  
approved B. Sheppard  
date March 11, 2013

Tender B. Sheppard  
March 11, 2013  
PWGSC Project Manager Administrateur de projets TPSGC

project number R.062426.001  
no. du projet

drawing no. C3  
no. du dessin